

| | | |
|--|------------------------|---|
| WAAS CH 99629 W11A | APP CRS 112° | Rwy Idg 3198 TDZE 604 Apt Elev 604 |
|--|------------------------|---|

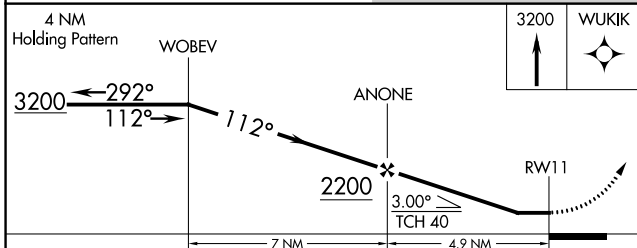
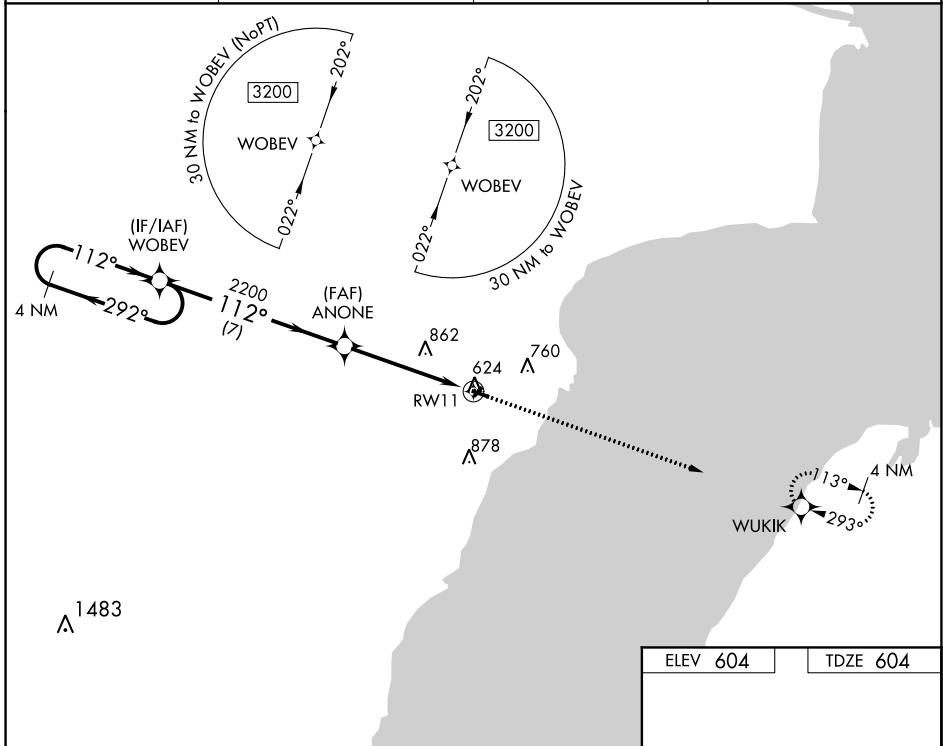
RNAV (GPS) RWY 11

OCONTO/J DOUGLAS BAKE MUNI (OCQ)

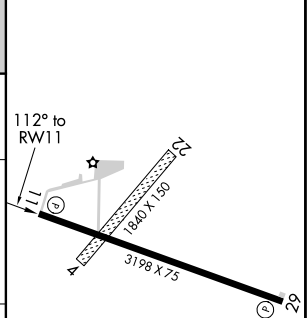
▼ Use Menominee, MI altimeter setting; when not received, use Green Bay altimeter setting and increase all MDA 40 feet and visibility Circling Cat C ¼ SM.
▲ NA Procedure NA at night. DME/DME RNP-0.3 NA. Visibility reduction by helicopters NA.

MISSED APPROACH:
Climb to 3200 direct WUKIK and hold.

| | | | |
|--------------------------|------------------------------|---|---------------------------------|
| AWOS-3 120.925 | MNM AWOS-3PT 109.6 | GREEN BAY APP CON ★ 120.3 338.2 | UNICOM 122.8 (CTAF) ① |
|--------------------------|------------------------------|---|---------------------------------|



| | |
|----------|----------|
| ELEV 604 | TDZE 604 |
|----------|----------|



| CATEGORY | A | B | C | D |
|----------|--------|-------------|-------------------------|----|
| LP MDA | 1200-1 | 596 (600-1) | 1200-1¾ 596 (600-1¾) | NA |
| LNAV MDA | 1220-1 | 616 (700-1) | 1220-1¾ 616 (700-1¾) | NA |
| CIRCLING | 1220-1 | 616 (700-1) | 1260-1¾ 656 (700-1¾) | NA |

REIL Rwy 11 and 29 ①
MIRL Rwy 11-29 ①

EC-3, 02 DEC 2021 to 30 DEC 2021

EC-3, 02 DEC 2021 to 30 DEC 2021

| | |
|------------------------|------------------------|
| APP CRS 293° | Rwy Idg 3198 |
| | TDZE 604 |
| | Apt Elev 604 |

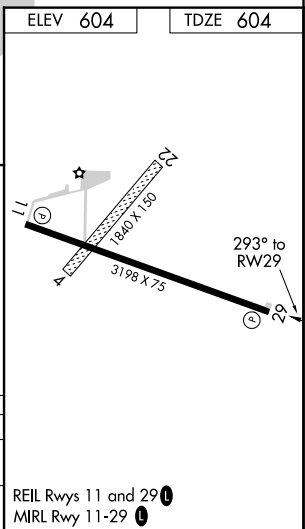
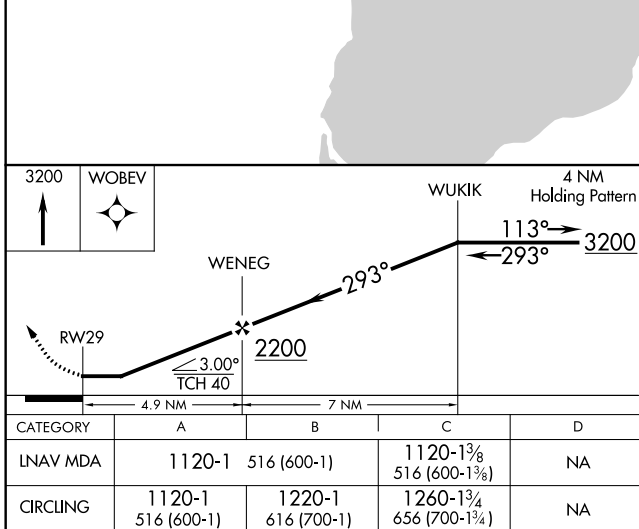
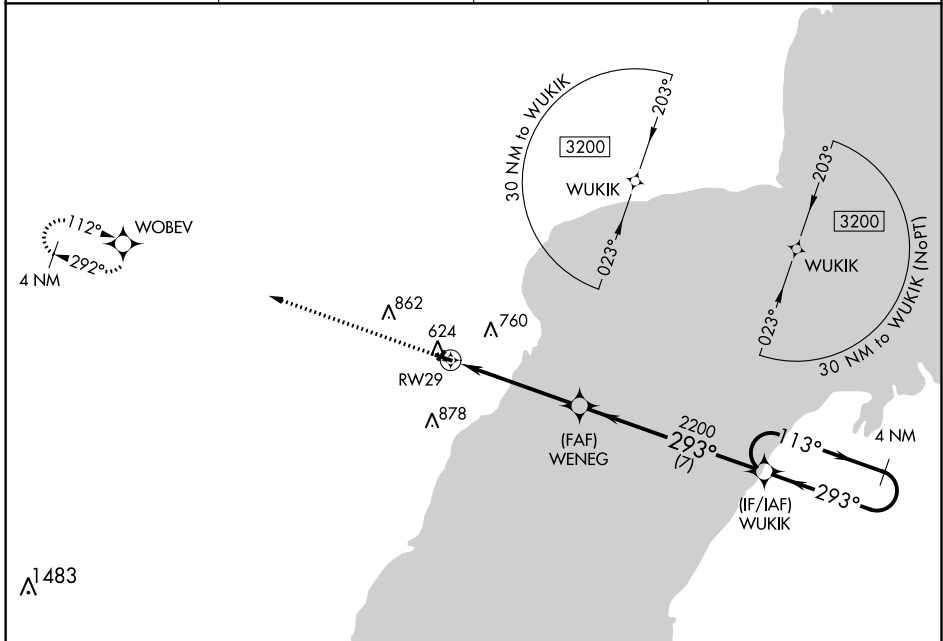
RNAV (GPS) RWY 29

OCONTO/J DOUGLAS BAKE MUNI (OCQ)

▼ Use Menominee altimeter setting; when not received, use Green Bay altimeter setting and increase all MDA 40 feet; increase LNAV/Circling Cat C visibility ¼ mile. Procedure NA at night. DME/DME RNP-0.3 NA. Visibility reduction by helicopters NA.

▲ NA MISSED APPROACH: Climb to 3200 direct WOBEV and hold.

| | | | |
|--------------------------|------------------------------|---|---------------------------------|
| AWOS-3 120.925 | MNM AWOS-3PT 109.6 | GREEN BAY APP CON ★ 120.3 338.2 | UNICOM 122.8 (CTAF) 0 |
|--------------------------|------------------------------|---|---------------------------------|



EC-3, 02 DEC 2021 to 30 DEC 2021

EC-3, 02 DEC 2021 to 30 DEC 2021