

**TOP ALTITUDE:
ASSIGNED BY ATC**

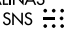
ATIS
124.175 283.0
CLNC DEL
296.75
GND CON
121.85 278.95
MOFFETT TOWER*
119.55 (CTAF) 259.65
NORCAL DEP CON
120.1 290.25

MOFFETT
Chan 123
NUQ 
(117.6)



HOOKS
N37°07.43'
W121°53.91'
6000

NOTE: TACAN required.

SALINAS
117.3 SNS 
Chan 120
N36°39.83' W121°36.19'
L-3, H-3

TAKEOFF MINIMUMS

Rwy 14R/L: Standard with the following minimum climb gradients:
Rwy 14R: Obstacle climb of 314' per NM to 4900, ATC climb of 332' per NM to 6000.
Rwy 14L: Obstacle climb of 314' per NM to 4900, ATC climb of 328' per NM to 6000.
Rwy 32R/L: NA, ATC.

NOTE: Chart not to scale.

DEPARTURE ROUTE DESCRIPTION

TAKEOFF RUNWAYS 14L/R: Climb via NUQ R-141 to cross HOOKS/NUQ 20 DME at 6000, thence
. . . . via (transition).

VALLEY TRANSITION (HOOKS2.SNS): From over HOOKS DME on SNS R-316 to SNS VORTAC.

SW-2, 26 MAR 2020 to 23 APR 2020

SW-2, 26 MAR 2020 to 23 APR 2020

SOUTHLAND THREE DEPARTURE

AL-410 (FAA)

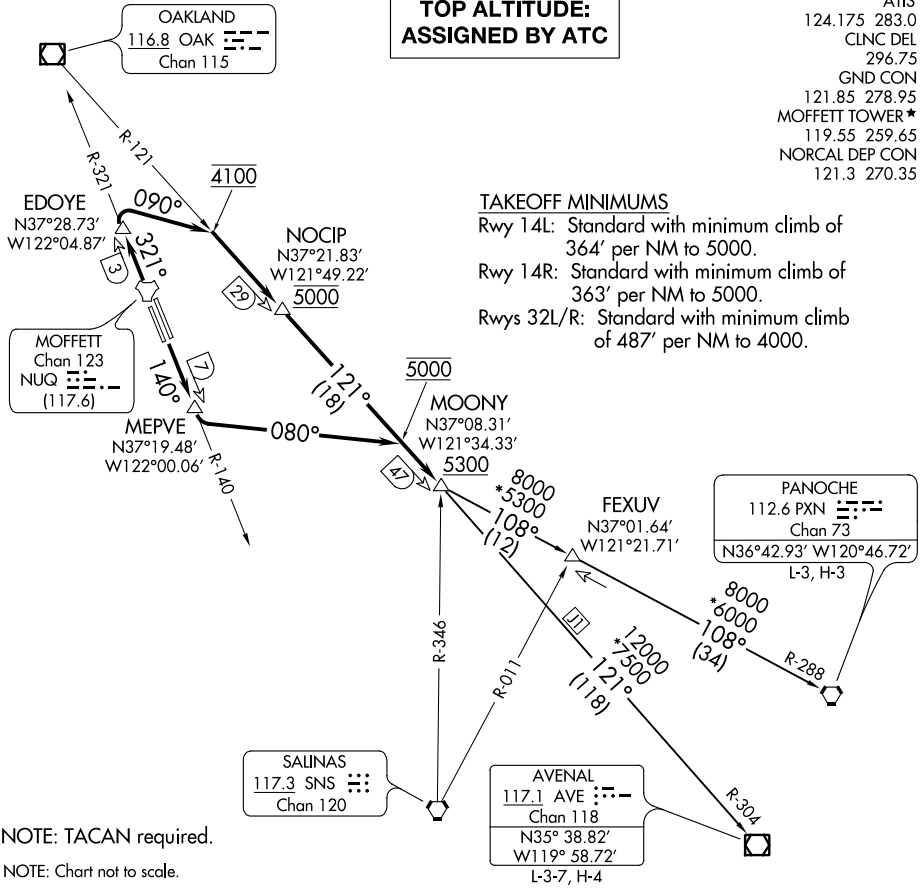
MOFFETT FEDERAL AFLD (NUQ)
MOUNTAIN VIEW, CALIFORNIA

**TOP ALTITUDE:
ASSIGNED BY ATC**

- ATIS 124.175 283.0
- CLNC DEL 296.75
- GND CON 121.85 278.95
- MOFFETT TOWER * 119.55 259.65
- NORCAL DEP CON 121.3 270.35

TAKEOFF MINIMUMS

- Rwy 14L: Standard with minimum climb of 364' per NM to 5000.
- Rwy 14R: Standard with minimum climb of 363' per NM to 5000.
- Rwys 32L/R: Standard with minimum climb of 487' per NM to 4000.



NOTE: TACAN required.
NOTE: Chart not to scale.

DEPARTURE ROUTE DESCRIPTION

TAKEOFF RUNWAYS 14L/R: Climb on NUQ R-140 to MEPVE/NUQ 7 DME, then climbing left turn on heading 080° to intercept OAK R-121 at 5000, then on OAK R-121 to cross MOONY INT at or above 5300, thence . . .

TAKEOFF RUNWAYS 32L/R: Climb on NUQ R-321 to EDOYE/NUQ 3 DME, then climbing right turn on heading 090° to intercept OAK R-121 at 4100, then on OAK R-121 to cross NOCIP/OAK 29 DME at 5000, then on OAK R-121 to cross MOONY INT at or above 5300, thence . . .

. . . on (transition), maintain ATC assigned altitude.

AVENAL TRANSITION (SOLN3.AVE): From over MOONY INT on OAK R-121 and AVE R-304 to AVE VOR/DME.

PANOCHE TRANSITION (SOLN3.PXN): From over MOONY INT on PXN R-288 to PXN VORTAC.

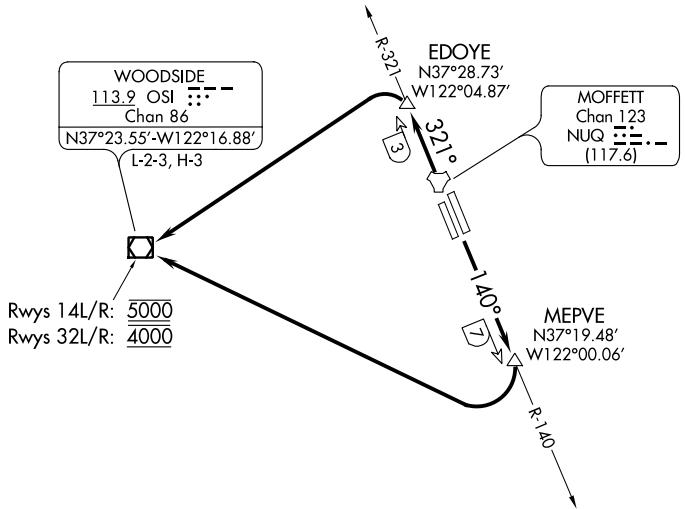
SOUTHLAND THREE DEPARTURE

SW-2, 26 MAR 2020 to 23 APR 2020

SW-2, 26 MAR 2020 to 23 APR 2020

ATIS
124.175 283.0
CLNC DEL
296.75
GND CON
121.85 278.95
MOFFETT TOWER★
119.55 (CTAF) 259.65
NORCAL DEP CON
121.3 270.35

**TOP ALTITUDE:
ASSIGNED BY ATC**



NOTE: TACAN required.

Rwys 14L/R: 5000
Rwys 32L/R: 4000

TAKEOFF MINIMUMS

Rwys 14L/R: Standard with minimum climb of 402' per NM to 5000.
Rwy 32R: Standard with minimum climb of 250' per NM to 4000.
Rwy 32L: Standard with minimum climb of 246' per NM to 4000.

NOTE: Chart not to scale.

DEPARTURE ROUTE DESCRIPTION

TAKEOFF RUNWAYS 14L/R: Climb via NUQ R-140 to MEPVE/NUQ 7 DME, then right turn direct to cross OSI VOR/DME at 5000, thence

TAKEOFF RUNWAYS 32L/R: Climb via NUQ R-321 to EDOYE/NUQ 3 DME, then turn left direct to cross OSI VOR/DME at 4000, thence

. . . . via RADAR vectors or assigned route.

SW-2, 26 MAR 2020 to 23 APR 2020

SW-2, 26 MAR 2020 to 23 APR 2020