

**OCEANA-FOUR DEPARTURE (NTU4•NTU)**

OCEANA NAS (APOLLO SOUCEK FIELD) (KNITU)  
 SHL-934 [USN] VIRGINIA BEACH, VIRGINIA

HARCUM	108.8 HCM
Chen 25	N37°26.92'
	W76°42.68'

CAPE CHARLES	112.2 CCV
Chen 59	N37°20.85'
	W75°59.86'

ATIS 317.6
CLNC DEL 254.4
GND CON 119.6 336.4
OCEANA TOWER 127.075 360.2
OCEANA DEP CON 123.9 266.8

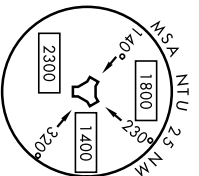
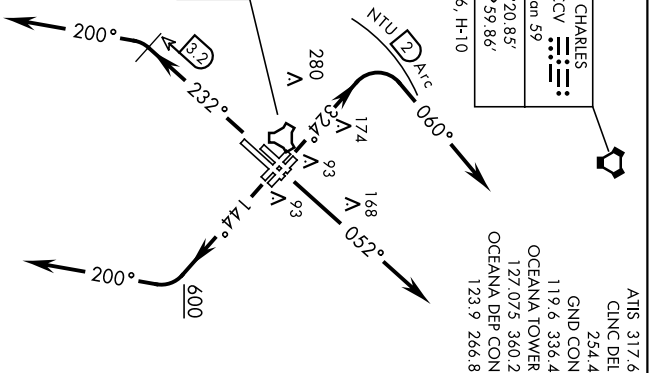
HOPEWELL	112.0 HPW
Chen 57	N37°19.73'
	W77°06.96'

OCEANA	Chen 113 NTU
	N36°49.45' W76°02.23'

SUNNS	N36°26.41'
	W76°30.47'

EDDYS	N36°26.42'
	W76°27.01'

WAKS	N37°03.03'
	W77°04.13'



**RADAR REQUIRED**

Chart not to scale.

**DEPARTURE ROUTE DESCRIPTION**

- ▶ TAKE-OFF Rwy 5L/R: Climb heading 052°. Thence...
- TAKE-OFF Rwy 14L/R: Climb heading 144° to 600 then climbing right turn heading 200°. Thence...
- TAKE-OFF Rwy 23L/R: Climb heading 232°, crossing NTU TACAN 3.2 DME, turn left heading 200°. Thence...
- TAKE-OFF Rwy 32L/R: Climb heading 324° to assigned altitude, turn right heading 060° within NTU TACAN 2 DME. Thence...
- ...Maintain 4000 or assigned lower altitude.
- CAPE CHARLES TRANSITION (NTU4.CCV): Via RADAR vectors to CCV VORTAC.
- EDDYS TRANSITION (NTU4.EDDYS): Via RADAR vectors to EDDYS.
- HARCUM TRANSITION (NTU4.HCM): Via RADAR vectors to HCM VORTAC.
- HOPEWELL TRANSITION (NTU4.HPW): Via RADAR vectors to HPW VORTAC.
- (At or below 17,000 only):
- SUNNS TRANSITION (NTU4.SUNNS): Via RADAR vectors to SUNNS.
- (At or below 17,000 only):
- WAKS TRANSITION (NTU4.WAKS): Via RADAR vectors to WAKS.

**OCEANA-FOUR DEPARTURE (NTU4•NTU)**

OCEANA NAS (APOLLO SOUCEK FIELD) (KNITU)  
 VIRGINIA BEACH, VIRGINIA

**WYNNNS-THREE DEPARTURE (WYNNNS3•WYNNNS)**

OCEANA NAS (APOLLO SOUCEK FIELD) (KNTU)  
VIRGINIA BEACH, VIRGINIA

ATIS 317.6  
CLNC DEL  
254.4  
GND CON 119.6 336.4  
OCEANA TOWER 127.075 360.2  
OCEANA DEP CON 123.9 266.8

SH-934 [USNI]

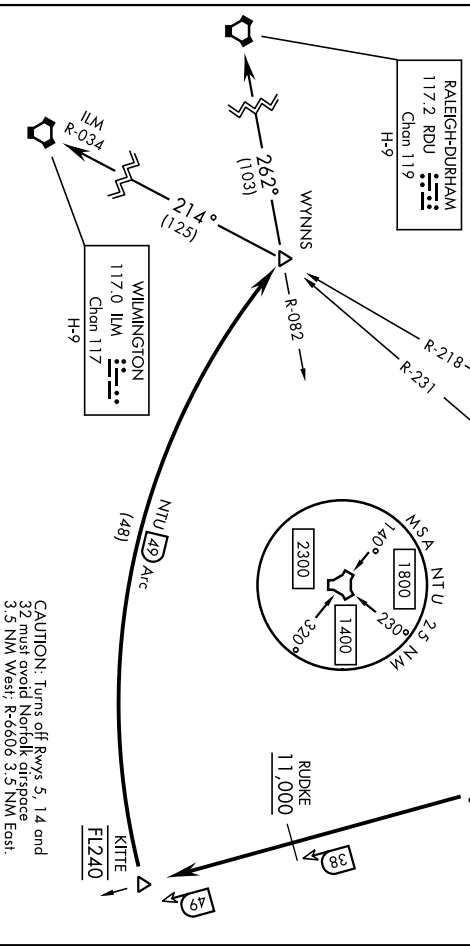
NORFOLK  
116.9 ORF  
Chen 116

OCEANA  
Chen 113 NTU

Rwy	Knots	120	180	240	300	360
All	V/V(fpm)	1000	1500	2000	2500	3000

ATC Minimum Climb Rate to FL240

**NTU TACAN REQUIRED**



**DEPARTURE ROUTE DESCRIPTION**

**TAKE-OFF RMY 5L/R or 14L/R:** Climbing right turn to intercept NTU TACAN R-175 to CANOB. Thence...

**TAKE-OFF RMY 23L/R:** Climbing left turn to intercept NTU TACAN R-175 to CANOB. Thence...

**TAKE-OFF RMY 32L/R:** Climbing left turn within NTU TACAN 2 DME to intercept NTU R-175. Thence...

... Via NTU R-175 to KITE, arc south of NTU via the 49 mile arc to WYNNNS. Cross RUDKE at or above 11,000. Cross KITE at FL240, or as assigned. Thence...

**RALEIGH-DURHAM TRANSITION (WYNNNS3-RDU):** Via RDU VORTAC R-082 to RDU.

**WILMINGTON TRANSITION (WYNNNS3-ILM):** Via ILM VORTAC R-034 to ILM.

**WYNNNS-THREE DEPARTURE (WYNNNS3•WYNNNS)**

VIRGINIA BEACH, VIRGINIA  
OCEANA NAS (APOLLO SOUCEK FIELD) (KNTU)