

JACKSONVILLE, FLORIDA

RNAV (RNP) Y RWY 10

APCH CRS	Rwy ldg	8006
096°	TDZE	21
	Arprt Elev	23

- (USN)

JACKSONVILLE NAS (TOWERS FLD) (KNIP)

RNP AR APCH - RF required.



MISSED APPROACH: Climb to 600 then climbing right turn to 2000 direct MADEN and hold.

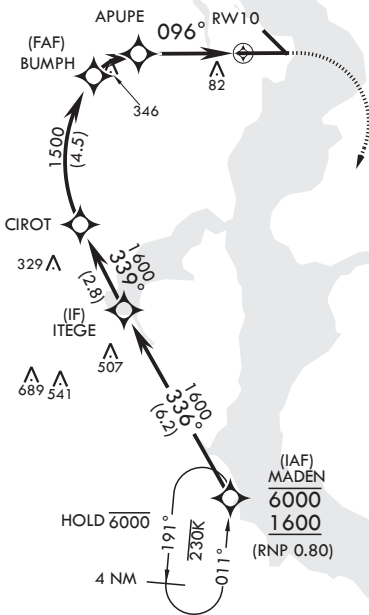
▼ * When ALS inop increase vis to 1 mile.

ATIS	APP CON/DEP CON	TOWER	GND CON	CLNC DEL	ASR/PAR
124.35 290.425	127.775 377.075	125.15 (CTAF) 340.2	128.6 336.4	134.775 353.675	

For uncompensated Baro-VNAV systems, procedure NA below -15°C (5°F) or above 54°C (130°F).



CECIL



1074 Δ

AUTHORIZATION REQUIRED

³⁰⁶ EMERG SAFE ALT 100 NM 2800

MADEN	ITEGE	CIROT	BUMPH	APUPE	RWY 10
6000 1600	1600	1600	1500	1027	
GP 3.00° TCH 51	336°	339°	1500	096°	
			1.5 NM	3 NM	
CATEGORY	A	B	C	D	
RNP 0.30 DA*	389-5%	368	(400-5%)		

600 2000 MADEN

↑ crs 096°

ELEV 23

Rwy 10 ldg 8006'

Rwy 14 ldg 3244'

TDZE 21

SE-3, 22 FEB 2024 to 21 MAR 2024

SE-3, 22 FEB 2024 to 21 MAR 2024

JACKSONVILLE, FLORIDA
Amdt 2 03NOV22

30°14'N - 81°41'W

JACKSONVILLE NAS (TOWERS FLD) (KNIP)

RNAV (RNP) Y RWY 10

JACKSONVILLE, FLORIDA

RNAV (RNP) Y RWY 28

APCH CRS	Rwy ldg	9003
276°	TDZE	13
	Arprt Elev	23

- (USN)

JACKSONVILLE NAS (TOWERS FLD) (KNIP)

RNP AR APCH

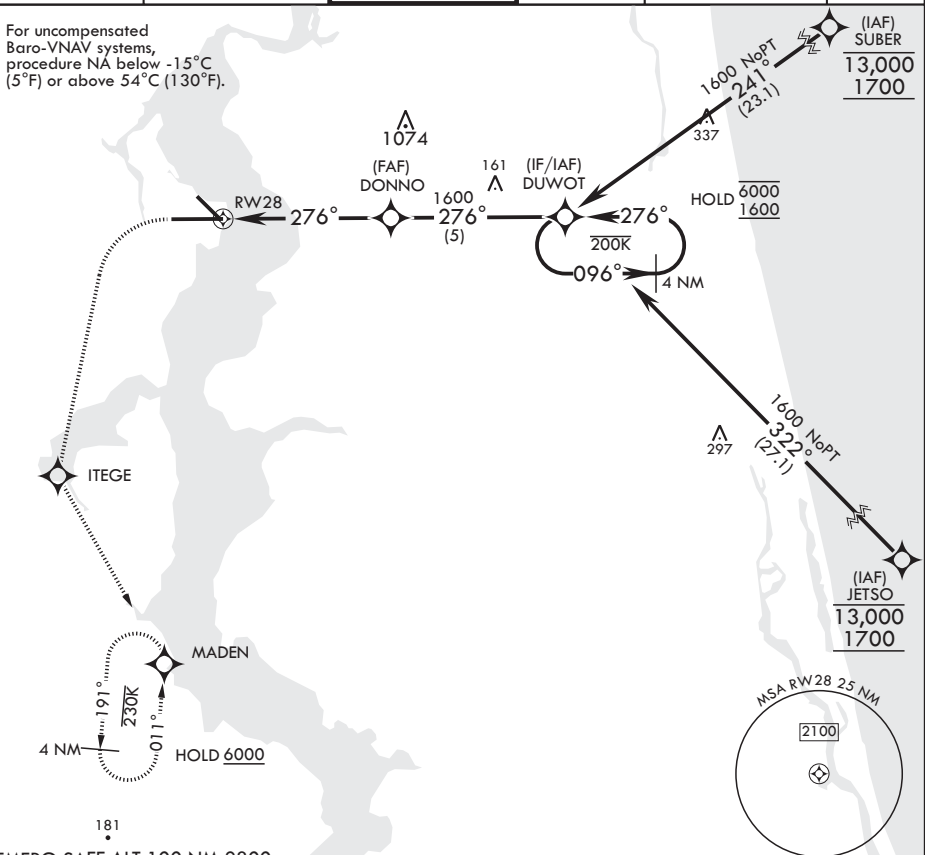
▼ * When ALS inop increase CAT ABCD vis to 7/8 mile.



MISSED APPROACH: Climb to 600 then climbing left turn to 2000 direct ITEGE, track 156° to MADEN and hold.

ATIS	APP CON/DEP CON	TOWER	GND CON	CLNC DEL	ASR/PAR
124.35 290.425	127.775 377.075	125.15 (CTAF) 340.2	128.6 336.4	134.775 0 353.675	

For uncompensated Baro-VNAV systems, procedure NA below -15°C (5°F) or above 54°C (130°F).



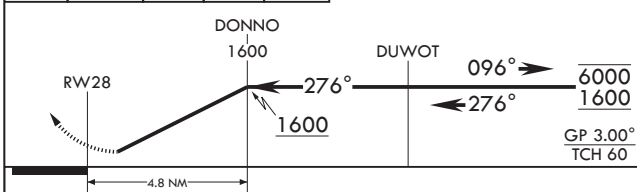
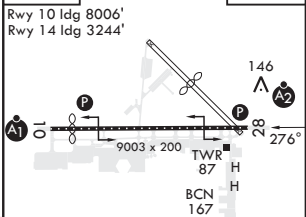
SE-3, 22 FEB 2024 to 21 MAR 2024

SE-3, 22 FEB 2024 to 21 MAR 2024

EMERG SAFE ALT 100 NM 2800

600	2000	ITEGE	tr 156°	MADEN
↑ crs 276°	↙	◆	↖	⊙

ELEV 23	TDZE 13
---------	---------



CATEGORY	A	B	C	D	HIRL Rwy 10-28
RNP 0.30 DA*	310-¾	297	(300-¾)		

JACKSONVILLE, FLORIDA

30°14'N - 81°41'W

JACKSONVILLE NAS (TOWERS FLD) (KNIP)

Amdt 1 03NOV22

RNAV (RNP) Y RWY 28

JACKSONVILLE, FLORIDA

RNAV (GPS) Z RWY 10

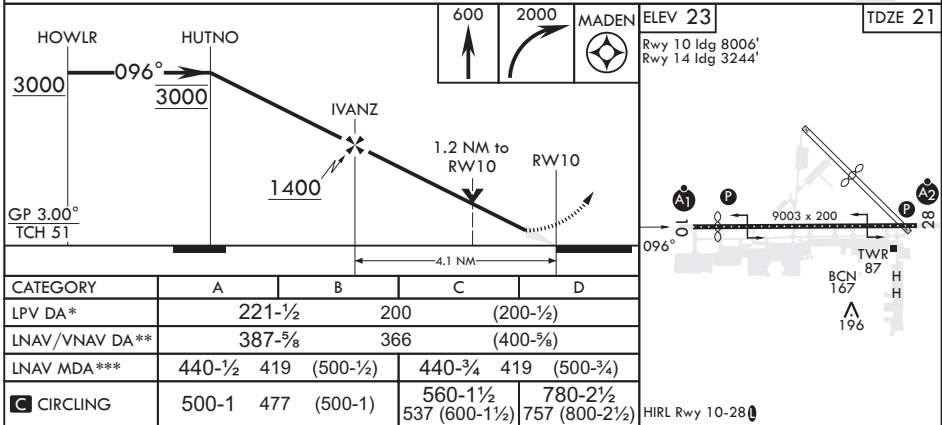
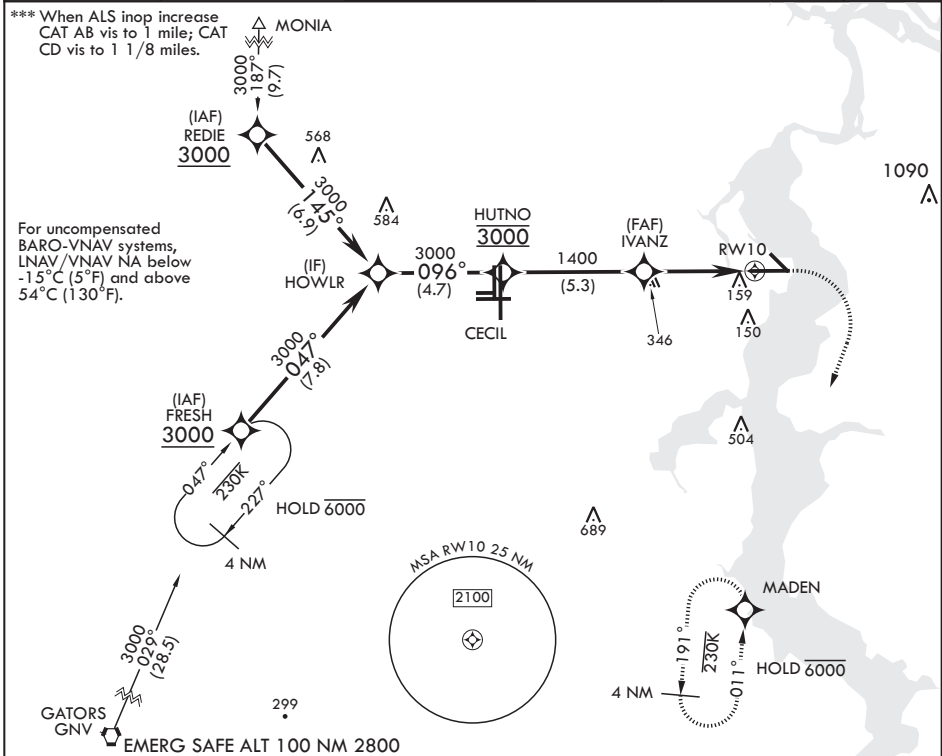
WAAS CH 42020 W10A	APCH CRS 096°	Rwy ldg TDZE Arprt Elev	8006 21 23
---------------------------------	-------------------------	-------------------------------	---------------------------------------

- (USN)

JACKSONVILLE NAS (TOWERS FLD) (KNIP)

RNP APCH	ALS-F1	MISSED APPROACH: Climb to 600 then climbing right turn to 2000 direct MADEN and hold.
<p>▼ * When ALS inop increase CAT ABCD vis to 3/4 mile. ** When ALS inop, increase CAT ABCD vis to 1 mile.</p>		

ATIS 124.35 290.425	APP CON/DEP CON 127.775 377.075	TOWER 125.15 (CTAF) 340.2	GND CON 128.6 336.4	CLNC DEL 134.775 353.675	ASR/PAR
-------------------------------	---	-------------------------------------	-------------------------------	------------------------------------	---------



JACKSONVILLE, FLORIDA

30°14'N - 81°41'W

JACKSONVILLE NAS (TOWERS FLD) (KNIP)

Amdt 1 03NOV22

RNAV (GPS) Z RWY 10

SE-3, 22 FEB 2024 to 21 MAR 2024

SE-3, 22 FEB 2024 to 21 MAR 2024

JACKSONVILLE, FLORIDA

RNAV (GPS) Z RWY 28

WAAS CH 46924 W28A	APCH CRS 276°	Rwy ldg TDZE Arpt Elev	9003 13 23
---------------------------------	-------------------------	------------------------------	---------------------------------------

-(USN)

JACKSONVILLE NAS (TOWERS FLD) (KNIP)

RNP APCH

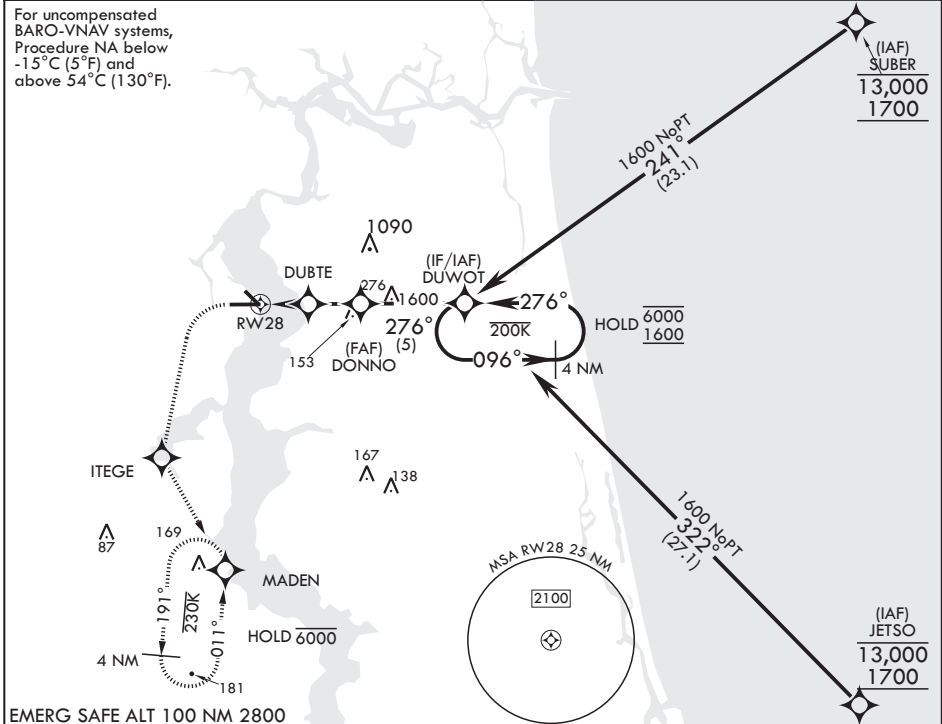
▼ * When ALS inop, increase CAT BCD to 7/8 mile.
 ** When ALS inop, increase CAT AB vis to 1 mile, CAT CD vis to 1 1/8 miles.



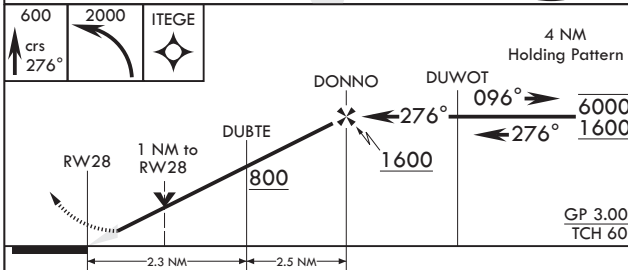
MISSED APPROACH: Climb to 600 then climbing left turn to 2000 direct ITEGE, track 156° to MADEN and hold.

ATIS 124.35 290.425	APP CON/DEP CON 127.775 377.075	TOWER 125.15 (CTAF) 340.2	GND CON 128.6 336.4	CLNC DEL 134.775 353.675	ASR/PAR
-------------------------------	---	-------------------------------------	-------------------------------	------------------------------------	---------

For uncompensated BARO-VNAV systems, Procedure NA below -15°C (5°F) and above 54°C (130°F).

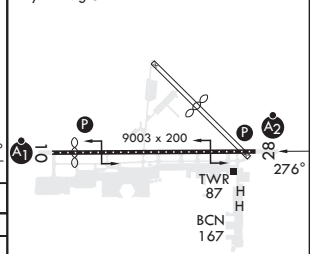


EMERG SAFE ALT 100 NM 2800



ELEV 23	TDZE 13
---------	---------

Rwy 10 ldg 8006'
Rwy 14 ldg 3244'



CATEGORY	A		B		C		D	
LPV DA	213-¾		200		(200-¾)			
LNAV/VNAV DA*	263-¾	274-¾	282-¾	293-¾	250 (300-¾)	261 (300-¾)	269 (300-¾)	280 (300-¾)
LNAV MDA**	400-¾	387 (400-¾)	400-⅙	387 (400-¾)				
Ⓢ CIRCLING	500-1	477 (500-1)	560-1½	780-2½	537 (600-1½)	757 (800-2½)	HIRL Rwy 10-28	

JACKSONVILLE, FLORIDA

30°14'N - 81°41'W

JACKSONVILLE NAS (TOWERS FLD) (KNIP)

Amdt 1 03NOV22

RNAV (GPS) Z RWY 28

SE-3, 22 FEB 2024 to 21 MAR 2024

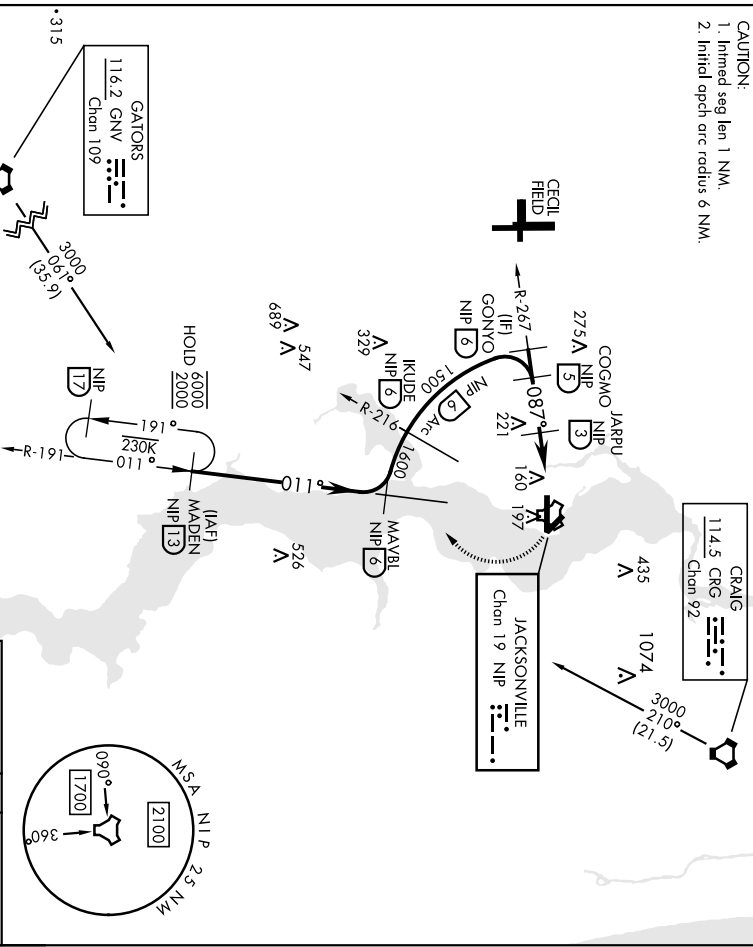
SE-3, 22 FEB 2024 to 21 MAR 2024

[USN]

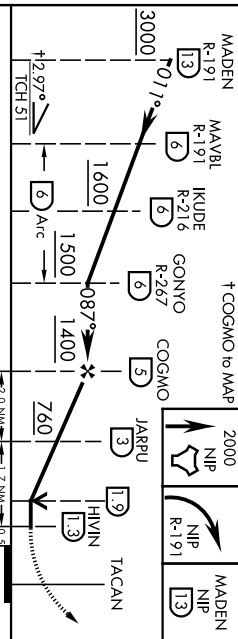
JACKSONVILLE NAS (TOWERS FLD) (KNIP)

TACAN NIP Chan 19	APCH CRS 087°	Rwy Idg TDZE Aspt Elev	8006 21 23
ATIS	APP CON	NAVY JACKSONVILLE TOWER	ASR/ PAR
124.35 290.425	127.775 377.075	125.15 (CTAF) 340.2	128.6 336.4 134.775 353.675
<p>▼ * When AIS Inop, increase CAT AB vis to 1 mile, CAT CD vis to 1 1/8 miles.</p>		<p>▲1 MISSED APPROACH: Climb to 2000 direct NIP TACAN and turn right outbound R-191 to MADEN and hold.</p>	

CAUTION:
1. Initial seg len 1 NM.
2. Initial opch arc radius 6 NM.



EMERG SAFE ALT 100 NM 2800



CATEGORY	A		B		C		D	
	420-1/2 399 (400-1/2)		420-3/4 399 (400-3/4)		560-1 1/2 537 (600-1 1/2)		780-2 1/2 757 (800-2 1/2)	
S-10 *								
CIRCLING	500-1	477 (500-1)						

ELEV	23	TDZE	21
Rwy 10 ldg 8006'			
Rwy 14 ldg 3244'			

