

**SAUSBURY SEVEN DEPARTURE (SBY7.CBEAV)**

PATUXENT RIVER NAS (TRAPNELL FIELD) (KNHK)  
 PATUXENT RIVER, MARYLAND

ALTS 322.425  
 GINC DEL 135.2 316.125  
 GND CON 120.6 336.4  
 PATUXENT TOWER 123.7 343.65  
 PATUXENT APP/DEP CON 121.0 250.3

AL-314 (USN)

Rwy	Knots	60	120	180	240	300	360
24	V/V(fpm)	214	428	642	856	1070	1284

Minimum Climb Rate to 500

WATERLOO  
 112.6 ATR  
 Chon 73  
 N38°48.59'  
 W75°12.88'

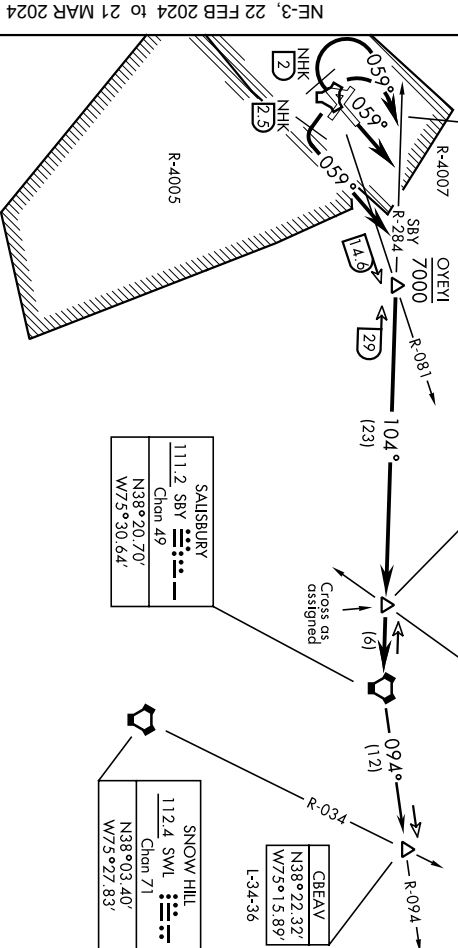
NAS PATUXENT RIVER  
 Chon 39 (Y) NHK  
 N38°16.86'  
 W75°24.64'

FRAND  
 N38°20.90'  
 W75°38.18'

CBEAV  
 N38°22.32'  
 W75°15.89'  
 L-34-36

SNOW HILL  
 112.4 SWL  
 Chon 71  
 N38°03.40'  
 W75°27.83'

SAUSBURY  
 111.2 SBY  
 Chon 49  
 N38°20.70'  
 W75°30.64'



Departure Rwy 2-20 not authorized.

**DEPARTURE ROUTE DESCRIPTION**

- ▼ TAKEOFF Rwy 6: Climb to 6000 heading 059°, thence...
  - TAKEOFF Rwy 14: Climbing left turn to 6000 heading 059° within NHK TACAN 2.5 DME, thence...
  - TAKEOFF Rwy 24: Climb on heading 239° to NHK TACAN 2 DME, then climbing right turn to 6000 heading 059°, thence...
  - TAKEOFF Rwy 32: Climbing right turn to 6000 to heading 080°, thence...
- Intercept SBY VORTAC R-284, then on SBY R-284 to SBY. Cross FRAND as assigned. Then on assigned route of transition..
- CBEAV TRANSITION (SBY7.CBEAV): Then on SBY R-094 to CBEAV.

22139

**SWABY NINE DEPARTURE (SWABY9, SWABY)**

**PATUXENT RIVER NAS (TRAPNELL FIELD) (KNHK)**  
 AL-314 [USN] PATUXENT RIVER, MARYLAND

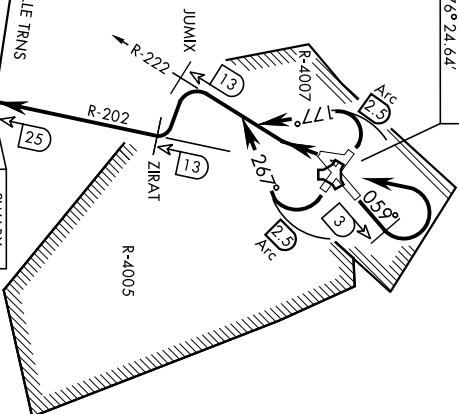
Knots	60	120	180	240	300	360
V/W [fpm]	310	620	930	1240	1550	1860

ATC Climb Rate to 9000

Departure Rwy 2-20 not authorized.  
 Minimum filing dh 10,000'.

•285  
 ATIS 322.425  
 CLNC DEL 135.2 316.125  
 GND CON 120.6 336.4  
 PATUXENT TOWER 123.7 343.65  
 PATUXENT AHP/DEP CON 121.0 250.3

NAS PATUXENT RIVER  
 Chan 39 (Y) NHK  
 N38° 16.86'  
 W76° 24.64'



GORDONSVILLE  
 115.6 GVE  
 Chan 103  
 N38°00.82'  
 W78°09.18'  
 L-36, H-10

HOPEWELL  
 112.0 HPW  
 Chan 57  
 N37°19.73'  
 W77°06.96'  
 L-34-36, H-10-12

HARCUM  
 108.8 HCM  
 Chan 25  
 N37°26.92'  
 W76°42.66'  
 L-34-36, H-10-12

SWABY  
 N37° 52.38'  
 W76° 31.20'  
 9000

CAPE CHARLES  
 112.2 CCV  
 Chan 59  
 N37°20.85'  
 W75°59.86'  
 L-34-36, H-10-12

**ATC BRIEF  
 REQUIRED**

**135.2 316.125**

**TACAN REQUIRED**

Note: Chart not to scale  
 (Continued on next page)

**SWABY NINE DEPARTURE (SWABY9, SWABY)**  
 Orig 02DEC21

**PATUXENT RIVER, MARYLAND  
 PATUXENT RIVER NAS (TRAPNELL FIELD) (KNHK)**

## ▼ DEPARTURE ROUTE DESCRIPTION

TAKEOFF RWY 6: Climb heading 059°, at NHK TACAN 3 DME turn left direct NHK thence...

TAKEOFF RWY 14: Climbing right turn heading 267° within NHK TACAN 2.5 DME to intercept NHK R-222, thence...

TAKEOFF RWY 24: Climbing left turn to intercept NHK TACAN R-222, thence...

TAKEOFF RWY 32: Climbing left turn heading 177°, to intercept NHK TACAN R-222, thence...

...Then on NHK R-222 to JUMX. Climbing left turn to intercept 13 DME arc to ZIRAT, then turn right on R-202 to SWABY. Then on assigned transition or expect radar vectors.

GORDONSVILLE TRANSITION (SWABY9.GVE): Cross SWABY at or above 9,000, then on GVE VORTAC R-102 to GVE.

HARCUM TRANSITION (SWABY9.HCM): Cross SWABY at or above 9,000, then on HCM VORTAC R-027 to HCM.

HOPEWELL TRANSITION (SWABY9.HPW): Cross SWABY at or above 9,000, then on HPW VORTAC R-047 to HPW.

STEIN TRANSITION (SWABY9.STEIN): Cross SWABY at or above 9,000, then on NHK R-202 to UNNAC, then on CCV VORTAC R-323 to STEIN.