

NDB MTH 260	APP CRS 075°	Rwy ldg TDZE Apt Elev	N/A N/A 5
-----------------------	------------------------	--------------------------	--------------------------------------

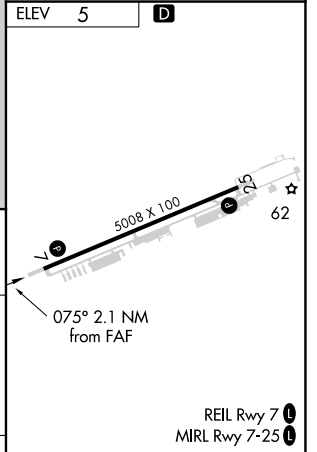
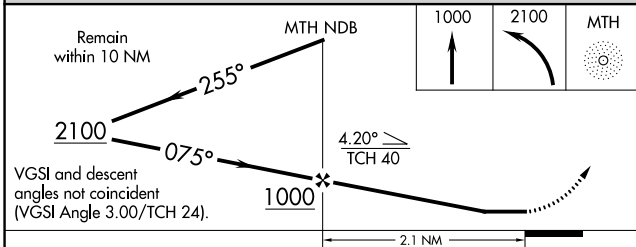
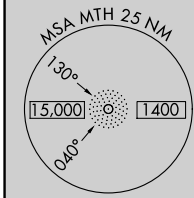
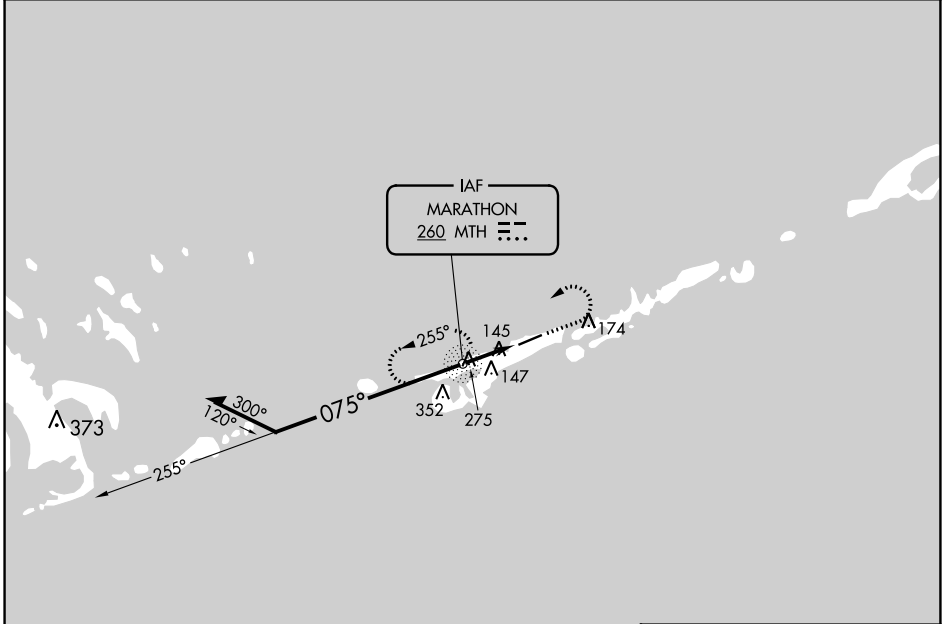
NDB-A

THE FLORIDA KEYS MARATHON INTL (MTH)

⚠ Helicopter visibility reduction below $\frac{3}{4}$ SM NA.
⚠ When local altimeter setting not received, use Key West Intl altimeter setting and increase all MDAs 100 feet, increase Cat C visibility $\frac{1}{4}$ SM, and Cat D visibility $\frac{1}{2}$ SM.

MISSED APPROACH: Climb to 1000 then climbing left turn to 2100 direct MTH NDB and hold.

ASOS 135.525	MIAMI CENTER 133.5 306.9	UNICOM 122.975 (CTAF) 1
------------------------	------------------------------------	-----------------------------------



CATEGORY	FAF to MAP 2.1 NM			
	A	B	C	D
CIRCLING	460-1 455 (600-1)	480-1 475 (500-1)	620-1 $\frac{1}{4}$ 615 (700-1 $\frac{1}{4}$)	660-2 655 (700-2)
	Knots: 60	90	120	150 180
	Min:Sec: 2:06	1:24	1:03	0:50 0:42

NDB-A

SE-3, 05 OCT 2023 to 02 NOV 2023

SE-3, 05 OCT 2023 to 02 NOV 2023

WAAS CH 58312 W25A	APP CRS 251°	Rwy Idg TDZE Apt Elev	5008 5 5
--	------------------------	-----------------------------	-------------------------------------

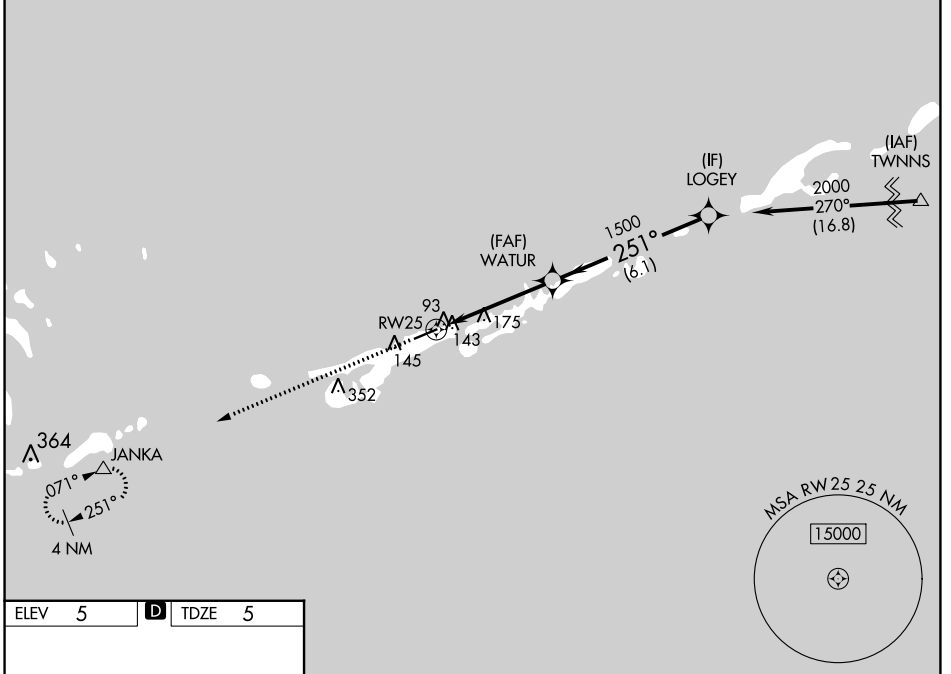
RNAV (GPS) RWY 25

THE FLORIDA KEYS MARATHON INTL (MTH)

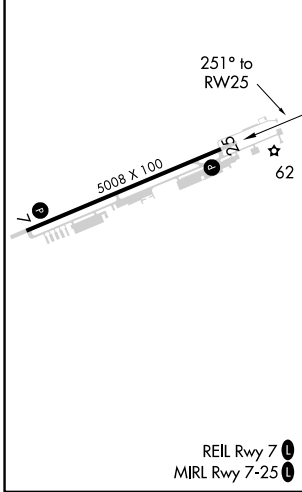
▽ DME/DME RNP-0.3 NA. Helicopter visibility reduction below 3/4 SM NA. When local altimeter setting not received, use Key West Intl altimeter setting: increase LPV DA to 408 feet, LNAV/VNAV DA to 497 feet and all MDAs 100 feet; increase LPV all Cats visibility 1/2 SM, increase LNAV/VNAV all Cats, LNAV Cat C/D, and Circling Cat C visibility 1/4 SM, and Circling Cat D visibility 1/2 SM. Baro-VNAV NA below -1.5°C (5°F) and above 48°C (118°F). Baro-VNAV NA when using Key West Intl altimeter setting.

▲ MISSED APPROACH: Climb to 3100 direct JANKA and hold.

ASOS 135.525	MIAMI CENTER 133.5 306.9	UNICOM 122.975 (CTAF) 0
------------------------	------------------------------------	-----------------------------------



ELEV 5	D	TDZE 5
--------	----------	--------



3100	JANKA ▲	VGSI and RNAV glidepath not coincident (VGSI Angle 3.00/TCH 24).	Procedure Turn NA
		LOGEY	
		WATUR	
		2000	
		1500	
		GP 3.00°	TCH 40

CATEGORY	A	B	C	D
LPV DA	315-1 310 (400-1)			
LNAV/VNAV DA	404-1 1/2 399 (400-1 1/2)			
LNAV MDA	440-1	435 (500-1)	440-1 1/4 435 (500-1 1/4)	440-1 1/2 435 (500-1 1/2)
CIRCLING	460-1 455 (500-1)	480-1 475 (500-1)	620-1 3/4 615 (700-1 3/4)	660-2 655 (700-2)

SE-3, 05 OCT 2023 to 02 NOV 2023

SE-3, 05 OCT 2023 to 02 NOV 2023

WAAS CH 99605 W07A	APP CRS 071°	Rwy Idg TDZE Apt Elev	5008 5 5
--	------------------------	-----------------------------	-------------------------------------

RNAV (GPS) RWY 7

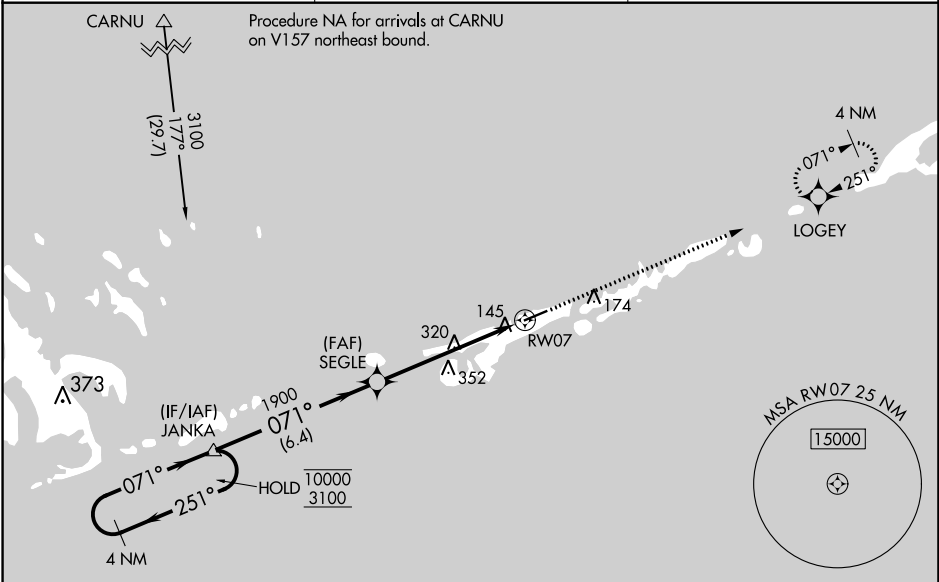
THE FLORIDA KEYS MARATHON INTL (MTH)

RNP APCH-GPS.

▼ Baro-VNAV and VDP NA when using Key West Intl altimeter setting. Rwy 7 helicopter visibility reduction below ¼ SM NA. For uncompensated Baro-VNAV systems, LNAV/VNAV NA below -15°C or above 54°C. When local altimeter setting not received, use Key West Intl altimeter setting: increase LPV DA to 482 feet, LNAV/VNAV DA to 534 feet, increase LPV and LNAV/VNAV all Cats visibility ¼ SM, increase all MDAs 100 feet and LNAV Cat C/D and Circling Cat C visibility ¼ SM and Circling Cat D ½ SM.

MISSED APPROACH: Climb to 2000 direct LOGEY and hold.

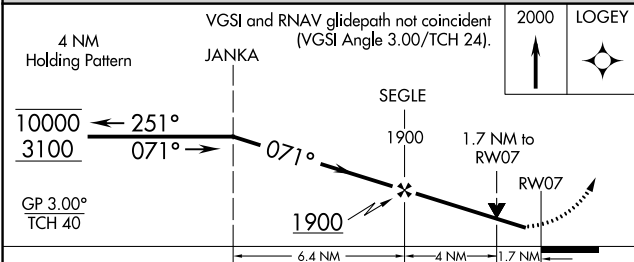
ASOS 135.525	MIAMI CENTER 133.5 306.9	UNICOM 122.975 (CTAF) 0
------------------------	------------------------------------	-----------------------------------



SE-3, 05 OCT 2023 to 02 NOV 2023

SE-3, 05 OCT 2023 to 02 NOV 2023

ELEV 5	D TDZE 5
--------	-----------------



CATEGORY	A	B	C	D
LPV DA		389-1 1/8	384 (400-1 1/8)	
LNAV/VNAV DA		441-1 1/4	436 (500-1 1/4)	
LNAV MDA	600-1	595 (600-1)	600-1 3/4	595 (600-1 3/4)
C CIRCLING	600-1	595 (600-1)	620-1 3/4 615 (700-1 3/4)	660-2 655 (700-2)

