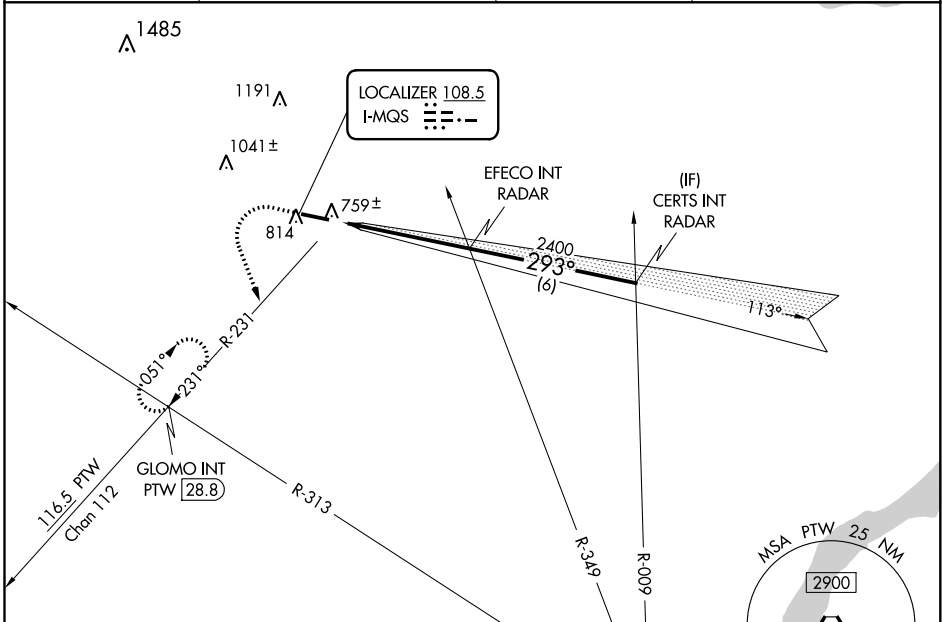


LOC I-MQS 108.5	APP CRS 293°	Rwy Idg TDZE Apt Elev	5400 660 660
---------------------------	------------------------	-----------------------------	---

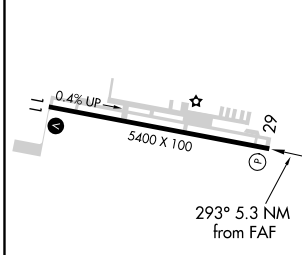
ILS or LOC RWY 29
CHESTER COUNTY G O CARLSON (MQS)

RADAR required for procedure entry.		MISSED APPROACH: Climb to 3000 then climbing left turn to 3000 on heading 170° and PTW R-231 to GLOMO INT/PTW 28.8 DME and hold, continue climb-in-hold to 3000.	
-------------------------------------	--	--	--

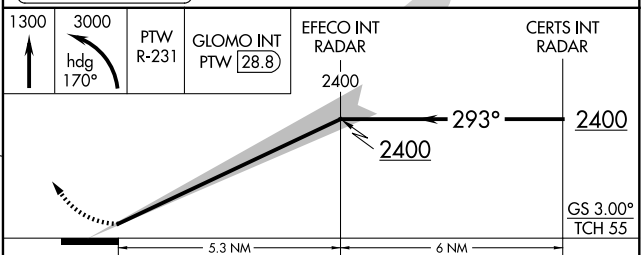
AWOS-3 126.25	PHILADELPHIA APP CON 124.35 319.15	CLNC DEL 125.6	UNICOM 122.7 (CTAF) 0
-------------------------	--	--------------------------	---------------------------------



ELEV 660	TDZE 660
----------	----------



DUPONT 114.0 DGO Chan 87	1300	3000	PTW R-231	GLOMO INT PTW 28.8	EFECO INT RADAR 2400	CERTS INT RADAR 2400
--------------------------------	------	------	-----------	-----------------------	----------------------------	----------------------------



HIRL Rwy 11-29 REIL Rwys 11 and 29 FAF to MAP 5.3 NM	Knots	60	90	120	150	180
	Min:Sec	5:18	3:32	2:39	2:07	1:46
CIRCLING	Category	A	B	C	D	
	S-ILS 29		910-3/4	250 (300-3/4)		
	S-LOC 29		1040-1	380 (400-1)		
	1140-1	1240-1	1260-1 1/2	1420-2 1/2		
	480 (500-1)	580 (600-1)	600 (600-1 1/2)	760 (800-2 1/2)		

WAAS CH 63006 W11A	APP CRS 113°	Rwy Idg TDZE Apt Elev	5400 644 660
--	------------------------	-----------------------------	---

RNAV (GPS) RWY 11

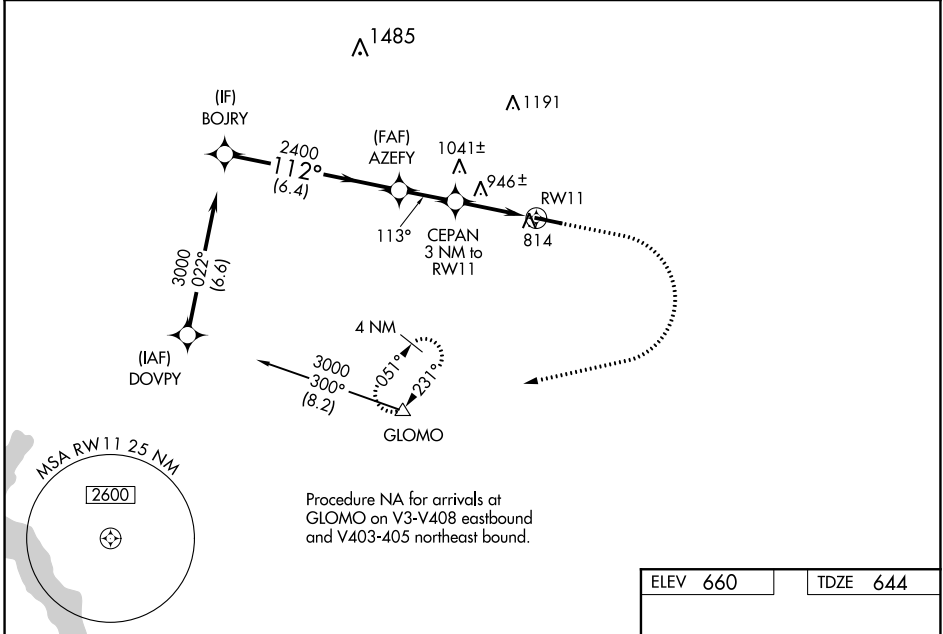
CHESTER COUNTY G O CARLSON (MQS)

RNP APCH - GPS.

⚠ Helicopter visibility reduction below 3/4 SM NA. For uncompensated Baro-VNAV systems, LNAV/VNAV NA below -16°C or above 54°C.

MISSED APPROACH: Climb to 1300 then climbing right turn to 3000 direct GLOMO and hold, continue climb-in-hold to 3000.

AWOS-3 126.25	PHILADELPHIA APP CON 124.35 319.15	CLNC DEL 125.6	UNICOM 122.7 (CTAF) 0
-------------------------	--	--------------------------	---------------------------------

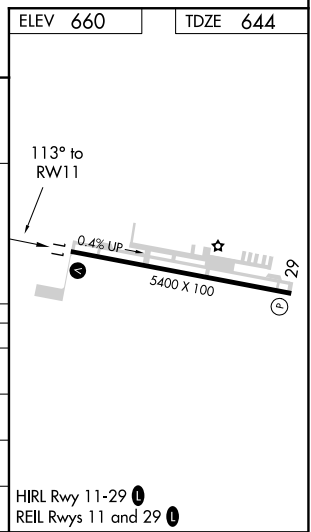


Procedure NA for arrivals at GLOMO on V3-V408 eastbound and V403-405 northeast bound.

NE-4, 07 OCT 2021 to 04 NOV 2021

NE-4, 07 OCT 2021 to 04 NOV 2021

VGS1 and RNAV glidepath not coincident (VGS1 Angle 3.00/TCH 52).		1300	3000	GLOMO
BOJRY	AZEFY	CEPAN 3 NM to RW11		
3000	2400	1700		
GP 3.20° TCH 55				
6.4 NM	2.1 NM	1.4	1.6	
CATEGORY	A	B	C	D
LPV DA	973-1		329 (400-1)	
LNAV/VNAV DA	1091-1 3/8		447 (500-1 3/8)	
LNAV MDA	1200-1	556 (600-1)	1200-1 3/8	556 (600-1 3/8)
CIRCLING	1200-1 540 (600-1)	1240-1 580 (600-1)	1260-1 3/8 600 (600-1 3/8)	1420-2 1/2 760 (800-2 1/2)



WAAS CH 82506 W29A	APP CRS 293°	Rwy ldg TDZE Apt Elev	5400 660 660
--	------------------------	-----------------------------	---

RNAV (GPS) RWY 29

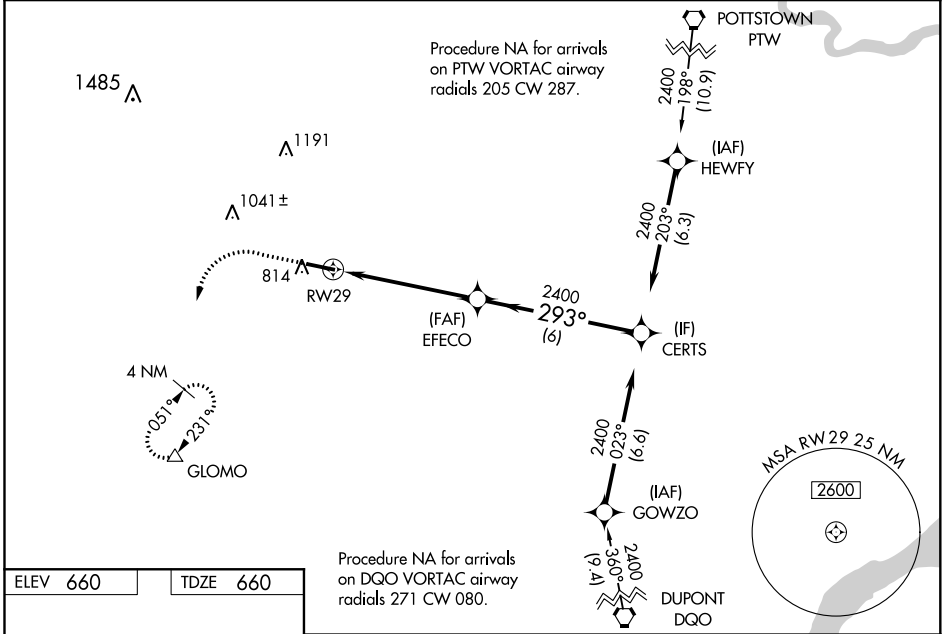
CHESTER COUNTY G O CARLSON (M/Q/S)

RNP APCH - GPS.

▲ For uncompensated Baro-VNAV systems, LNAV/VNAV NA below -16°C or above 54°C.

MISSED APPROACH: Climb to 1300 then climbing left turn to 3000 direct GLOMO and hold, continue climb-in-hold to 3000.

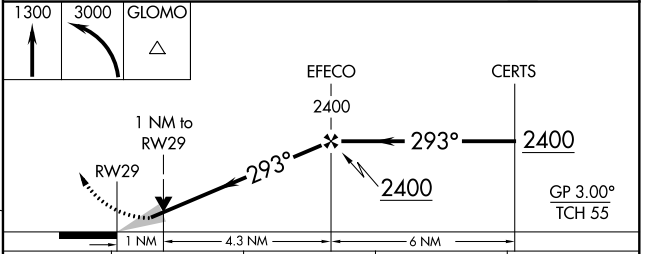
AWOS-3 126.25	PHILADELPHIA APP CON 124.35 319.15	CLNC DEL 125.6	UNICOM 122.7 (CTAF) 0
-------------------------	--	--------------------------	---------------------------------



ELEV 660	TDZE 660
----------	----------

HIRL Rwy 11-29 **0**

REIL Rwy 11 and 29 **0**



CATEGORY	A	B	C	D
LPV DA		910-3/4	250 (300-3/4)	
LNAV/VNAV DA		915-3/4	255 (300-3/4)	
LNAV MDA		1020-1	360 (400-1)	
C CIRCLING	1140-1 480 (500-1)	1240-1 580 (600-1)	1260-1 1/2 600 (600-1 1/2)	1420-2 1/2 760 (800-2 1/2)

NE-4, 07 OCT 2021 to 04 NOV 2021

NE-4, 07 OCT 2021 to 04 NOV 2021