

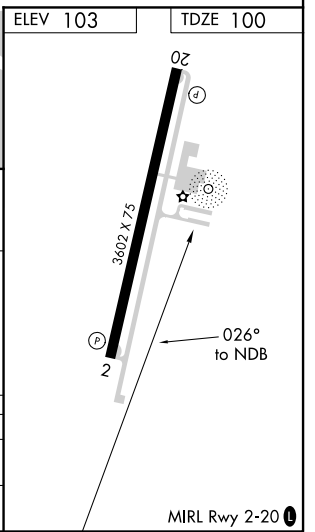
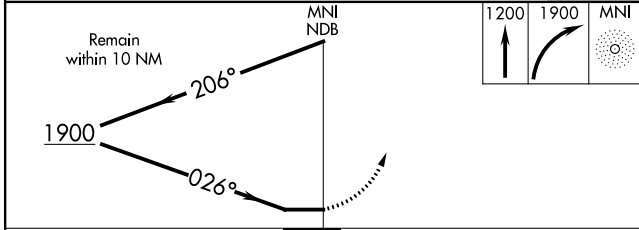
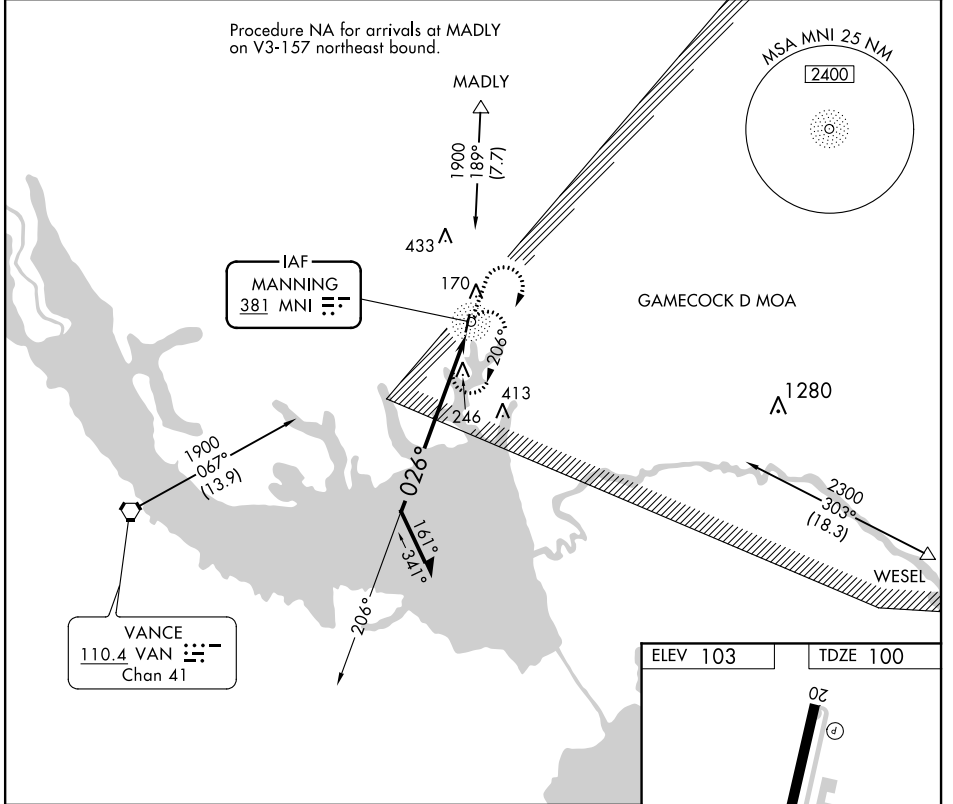
NDB MNI	APP CRS	Rwy Idg	<b>3602</b>
<b>381</b>	<b>026°</b>	TDZE	<b>100</b>
		Apt Elev	<b>103</b>

# NDB or GPS RWY 2

SANTEE COOPER RGNL (MNI)

NA Rwy 2 helicopter visibility reduction below 1 SM NA. Procedure NA at night.	MISSED APPROACH: Climb to 1200 then climbing right turn to 1900 direct MNI NDB and hold, continue climb-in-hold to 1900.
---	--

AWOS-3 <b>120.175</b>	SHAW APP CON★ <b>125.4 318.1</b>	UNICOM <b>122.8 (CTAF) 0</b>
--------------------------	-------------------------------------	---------------------------------



CATEGORY	A	B	C	D
S-2	660-1	560 (600-1)	660-1½	560 (600-1½)
CIRCLING	660-1	557 (600-1)	800-2 697 (700-2)	800-2¼ 697 (700-2¼)

SE-2, 11 AUG 2022 to 08 SEP 2022

SE-2, 11 AUG 2022 to 08 SEP 2022

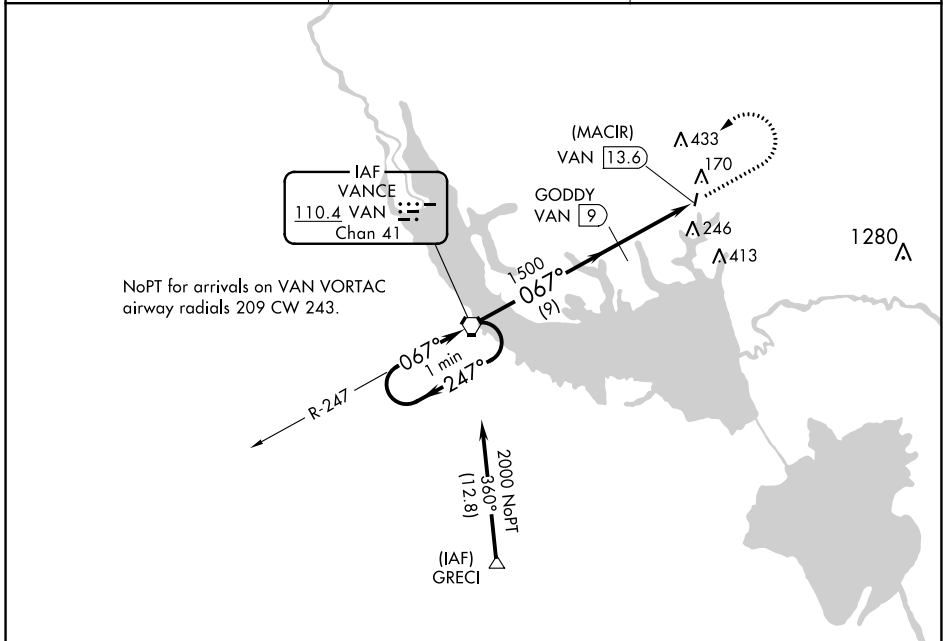
VORTAC VAN <b>110.4</b> Chan 41	APP CRS <b>067°</b>	Rwy Idg TDZE Apt Elev	<b>N/A</b> <b>N/A</b> <b>103</b>
---------------------------------------	------------------------	-----------------------------	--

# VOR/DME or GPS-A

SANTEE COOPER RGNL (MNI)

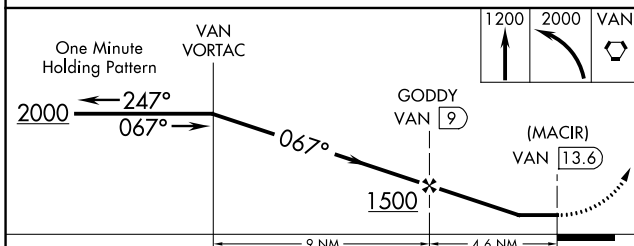
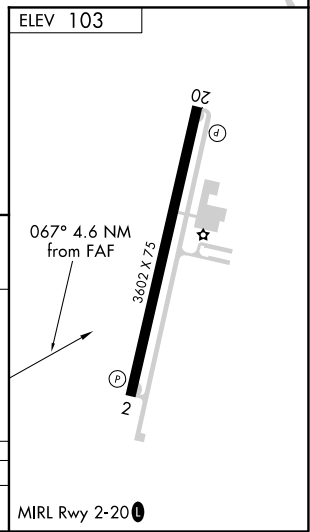
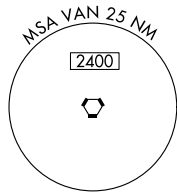
**Procedure NA at night.**  
**MISSED APPROACH:** Climb to 1200 then climbing left turn to 2000 direct VAN VORTAC and hold.

AWOS-3 <b>120.175</b>	SHAW APP CON* <b>125.4 318.1</b>	UNICOM <b>122.8 (CTAF)</b>
--------------------------	-------------------------------------	-------------------------------



SE-2, 11 AUG 2022 to 08 SEP 2022

SE-2, 11 AUG 2022 to 08 SEP 2022



CATEGORY	A	B	C	D
CIRCLING	660-1	557 (600-1)	800-2 697 (700-2)	800-2¼ 697 (700-2¼)