

(CROL1.CROL1) 18312

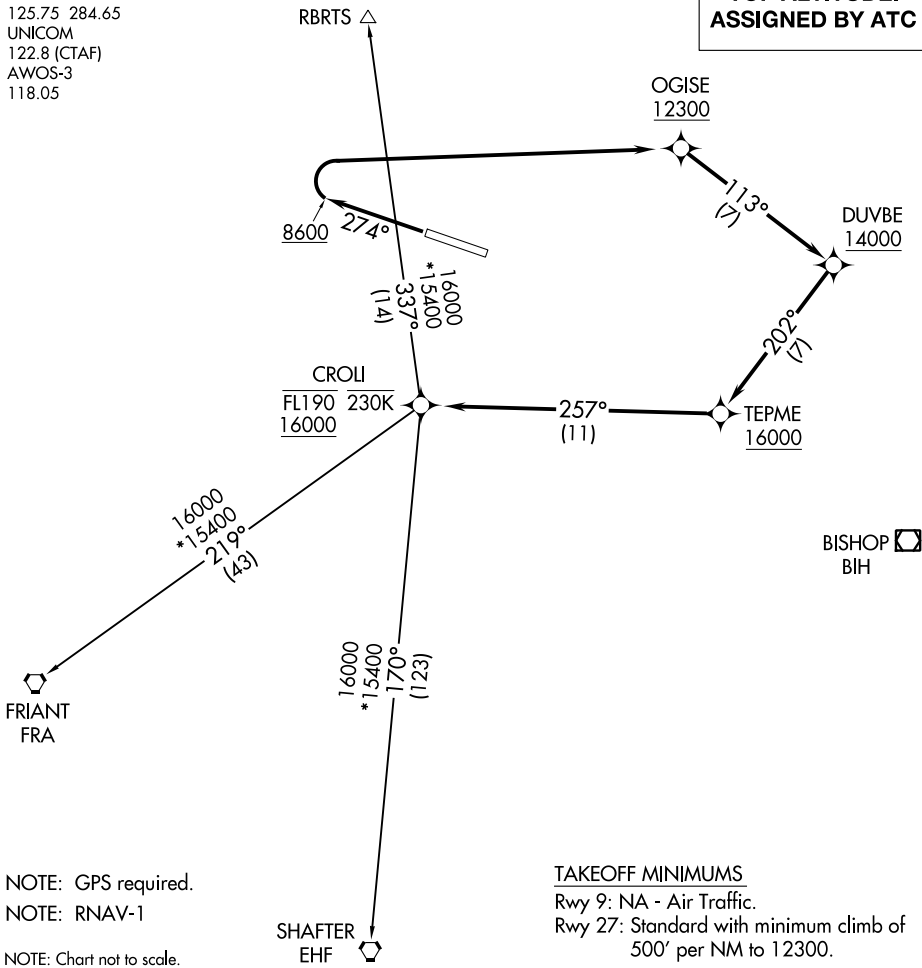
# CROL1 ONE DEPARTURE (RNAV)

AL-6841 (FAA)

MAMMOTH YOSEMITE (MMH)  
MAMMOTH LAKES, CALIFORNIA

OAKLAND APP CON  
125.75 284.65  
UNICOM  
122.8 (CTAF)  
AWOS-3  
118.05

**TOP ALTITUDE:  
ASSIGNED BY ATC**



SW-2, 09 SEP 2021 to 07 OCT 2021

SW-2, 09 SEP 2021 to 07 OCT 2021

NOTE: GPS required.  
NOTE: RNAV-1  
NOTE: Chart not to scale.

TAKEOFF MINIMUMS  
Rwy 9: NA - Air Traffic.  
Rwy 27: Standard with minimum climb of 500' per NM to 12300.

**DEPARTURE ROUTE DESCRIPTION**

**TAKEOFF RUNWAY 27:** Climb heading 274° to 8600, then right turn direct to cross OGISE at or above 12300, then on track 113° to cross DUVBE at or above 14000, then on track 202° to cross TEPME at or above 16000, then on track 257° to cross CROL1 at or above 16000 and at or below FL190, thence. . . .

. . . .on (transition) maintain 16000, expect filed altitude 10 minutes after departure.

SHAFTER TRANSITION (CROL1 .EHF)  
FRIANT TRANSITION (CROL1 .FRA)  
RBRTS TRANSITION (CROL1 .RBRTS)

# CROL1 ONE DEPARTURE (RNAV)

(CROL1.CROL1) 05MAR15

MAMMOTH LAKES, CALIFORNIA  
MAMMOTH YOSEMITE (MMH)

# OENNS ONE DEPARTURE (RNAV)

AL-6841 (FAA)

MAMMOTH YOSEMITE (MMH)  
MAMMOTH LAKES, CALIFORNIA

OAKLAND CENTER  
125.75 284.65  
UNICOM  
122.8 (CTAF)  
AWOS-3  
118.05

△ RBRTS

COALDALE  
OAL

UNING  
16200

JEBAD  
15200

OENNS  
13100 230K

☐ BISHOP  
BIH

ZNAME  
17000  
16200

### TAKEOFF MINIMUMS

Rwy 27: NA-ATC.

Rwy 9: Standard with minimum climb of  
500' per NM to 12400.

NOTE: GPS required.

NOTE: RNAV-1.

NOTE: Chart not to scale.



### DEPARTURE ROUTE DESCRIPTION

TAKEOFF RUNWAY 9: Climb heading 094° to 7635, then direct to cross SEDOC at or above 9300, then on depicted route to cross OENNS at or above 13100. Thence . . . .

. . . on (transition), maintain 16200, expect filed altitude 10 min after departure.

COALDALE TRANSITION (OENNS1.OAL)

FRIANT TRANSITION (OENNS1.FRA)

RBRTS TRANSITION (OENNS1.RBRTS)

SHAFTER TRANSITION (OENNS1.EHF)

FRIANT  
FRA

WIBOK  
FL195

CABAB (10)

16200  
241°  
(43)

(13)  
16200

246°

241°

16200  
(10)

13100  
\*11400  
180°  
(12)

13100  
\*7800  
015°  
(5)

13100  
\*12400  
009°  
(5)

13100  
\*15200  
12400  
015°  
(5)

103°  
(12)

094°

7635

SEDOC  
9300

334°  
16200  
(29)

175°  
16200  
(109)

SHAFTER  
EHF

SW-2, 09 SEP 2021 to 07 OCT 2021

SW-2, 09 SEP 2021 to 07 OCT 2021

# OENNS ONE DEPARTURE (RNAV)