

NDB-C

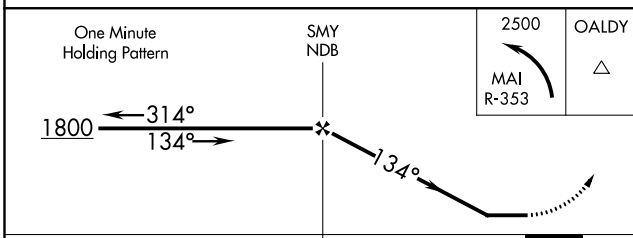
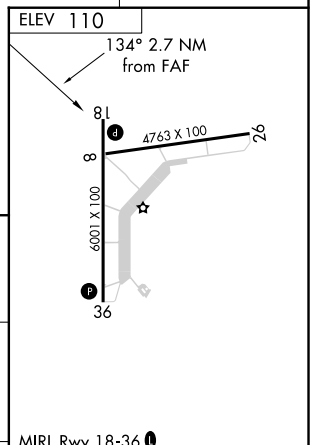
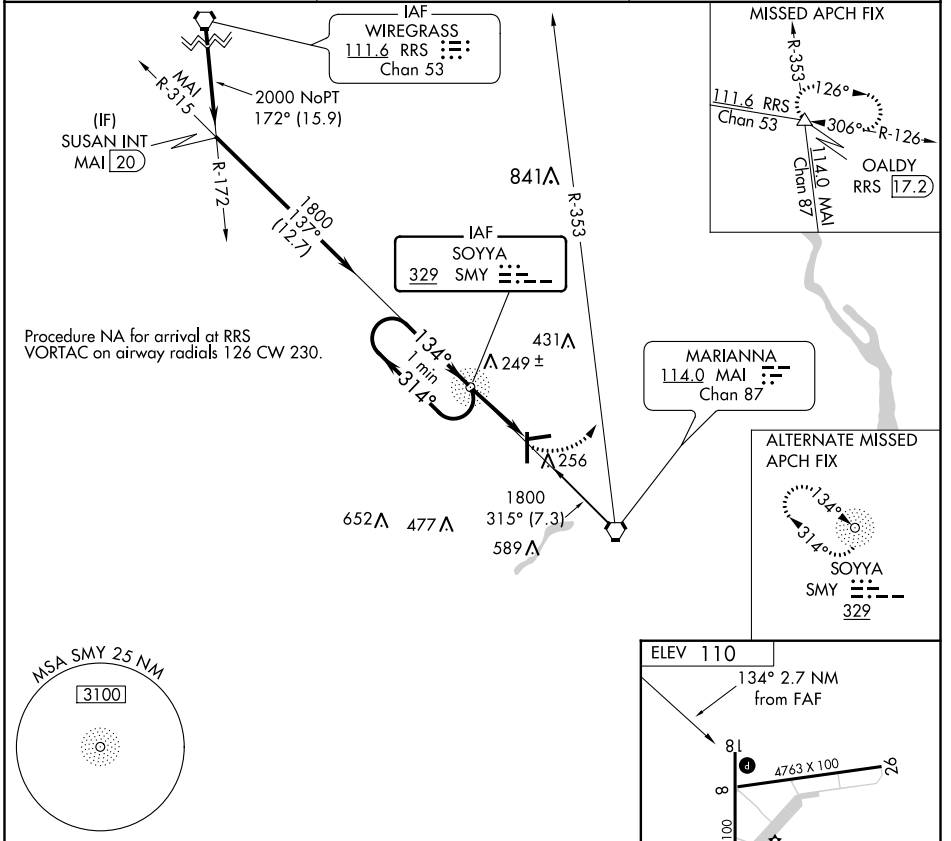
MARIANNA MUNI (MAI)

NDB SMY 329	APP CRS 134°	Rwy Idg TDZE Apt Elev 110	N/A N/A 110
-----------------------	------------------------	----------------------------------------	--------------------------

⚠ Helicopter visibility reduction below 1 SM NA. When local altimeter not received use Bainbridge altimeter setting; Increase all MDA 80 feet and Circling Cats C/D visibility ¼ SM. Circling Rwy 26 NA at night.

MISSED APPROACH: Climbing left turn to 2500 via MAI R-353 to OALDY INT/RRS 17.2 DME and hold.

ASOS 133.525	CAIRNS APP CON * 133.75 270.35	UNICOM 123.0 (CTAF) 0
------------------------	------------------------------------------	---------------------------------



CATEGORY	FAF to MAP 2.7 NM					
	A	B	C	D		
C CIRCLING	720-1	610 (700-1)	720-1¾ 610 (700-1¾)	900-2½ 790 (800-2½)		
	Knots	60	90	120	150	180
	Min:Sec	2:42	1:48	1:21	1:05	0:54

SE-3, 09 SEP 2021 to 07 OCT 2021

SE-3, 09 SEP 2021 to 07 OCT 2021

WAAS CH 70438 W18A	APP CRS 182°	Rwy Idg TDZE Apt Elev	6001 110 110
----------------------------------------	------------------------	-----------------------------	-----------------------------------------

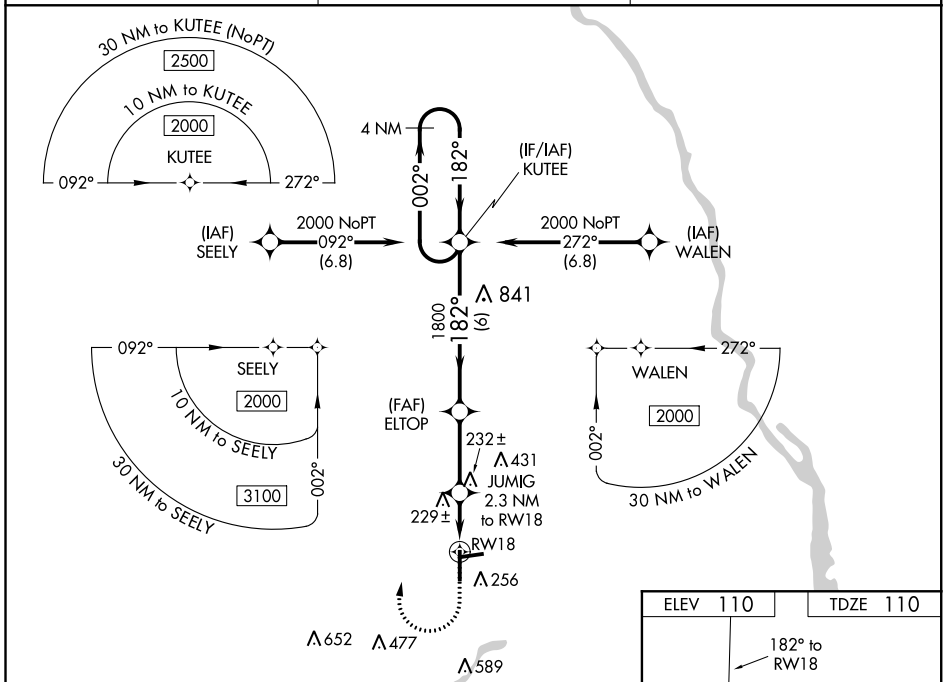
RNAV (GPS) RWY 18

MARIANNA MUNI (MAI)

⚠ Night landing: Rwy 26 NA. For uncompensated Baro-VNAV systems, LNAV/VNAV NA below -5°C (23°F) or above 54°C (130°F). Baro-VNAV and VDP NA when using Bainbridge altimeter setting. DME/DME RNP-0.3 NA. Helicopter visibility reduction below 3/4 SM NA. When local altimeter setting not received, use Bainbridge altimeter setting and increase all DA 72 feet and all MDA 80 feet; increase LPV and LNAV/VNAV all Cats and Circling Cat D visibility 1/4 mile and LNAV Cats C/D visibility 3/8 mile.

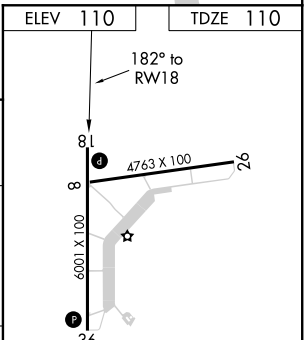
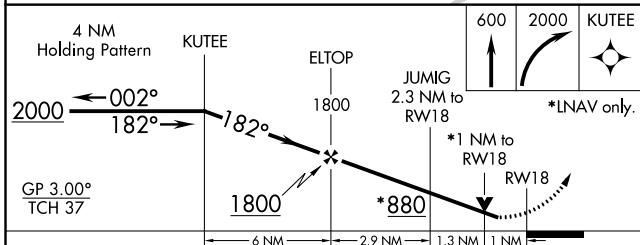
MISSED APPROACH:
Climb to 600 then climbing right turn to 2000 direct KUTEE and hold.

ASOS 133.525	CAIRNS APP CON ★ 133.75 270.35	UNICOM 123.0 (CTAF) 0
------------------------	------------------------------------------	---------------------------------



SE-3, 09 SEP 2021 to 07 OCT 2021

SE-3, 09 SEP 2021 to 07 OCT 2021



CATEGORY	A	B	C	D
LPV DA		360-7/8	250 (300-7/8)	
LNAV/VNAV DA		500-13/8	390 (400-13/8)	
LNAV MDA		480-1	370 (400-1)	
C CIRCLING	620-1	510 (600-1)	620-1 1/2 510 (600-1 1/2)	900-2 1/2 790 (800-2 1/2)

MIRL Rwy 18-36 0

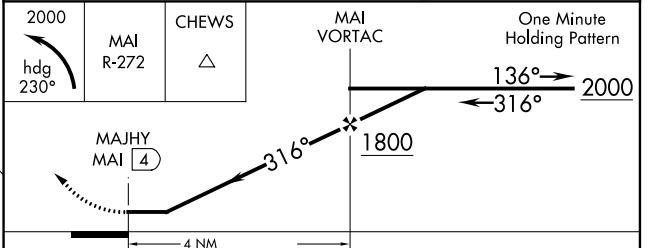
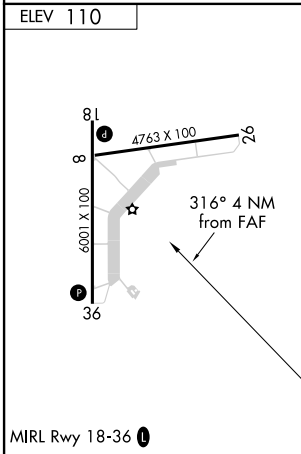
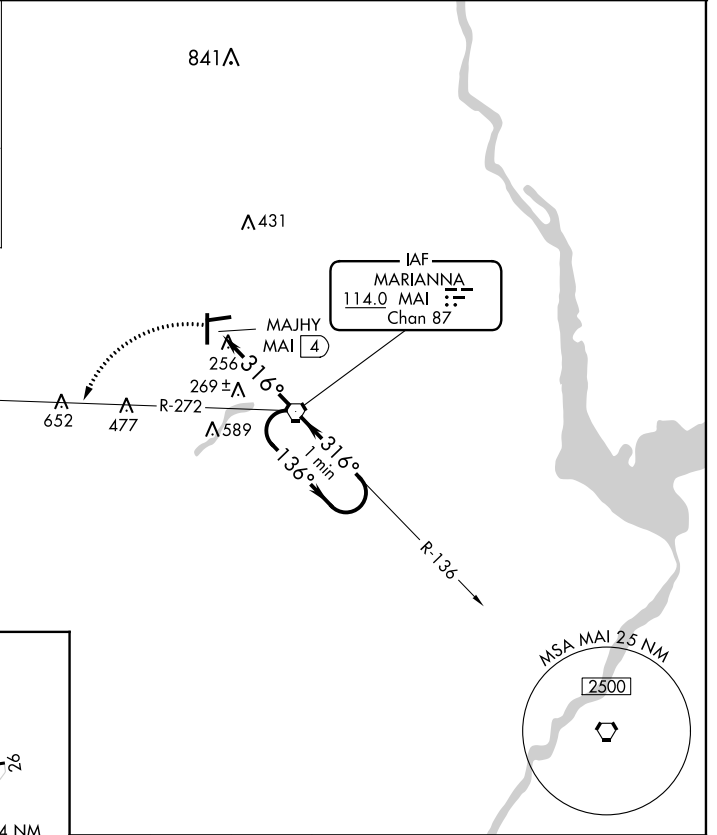
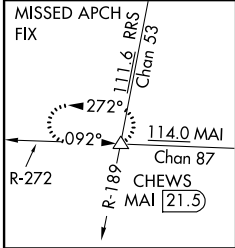
VORTAC MAI 114.0 Chan 87	APP CRS 316°	Rwy ldg TDZE N/A Apt Elev 110
----------------------------------------------	------------------------	---------------------------------------------------

VOR-A
MARIANNA MUNI (MAI)

⚠ Helicopter visibility reduction below 1 SM NA. When local altimeter setting not received, use Bainbridge altimeter setting; Increase all MDA 80 feet and Circling Cat D visibility ¼ SM. Circling Rwy 26 NA at night.

MISSED APPROACH: Climbing left turn to 2000 via heading 230° and MAI R-272 to CHEWS INT/MAI 21.5 DME and hold.

ASOS 133.525	CAIRNS APP CON ★ 133.75 270.35	UNICOM 123.0 (CTAF) 0
------------------------	------------------------------------------	---------------------------------



FAF to MAP 4 NM					
Knots	60	90	120	150	180
Min:Sec	4:00	2:40	2:00	1:36	1:20
CIRCLING	620-1 510 (600-1)		620-1½ 510 (600-1½)		900-2½ 790 (800-2½)

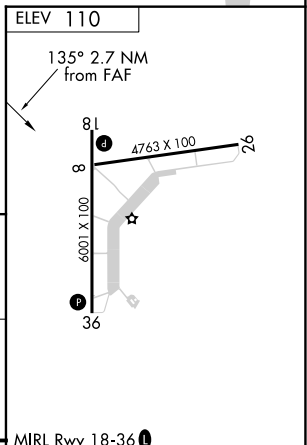
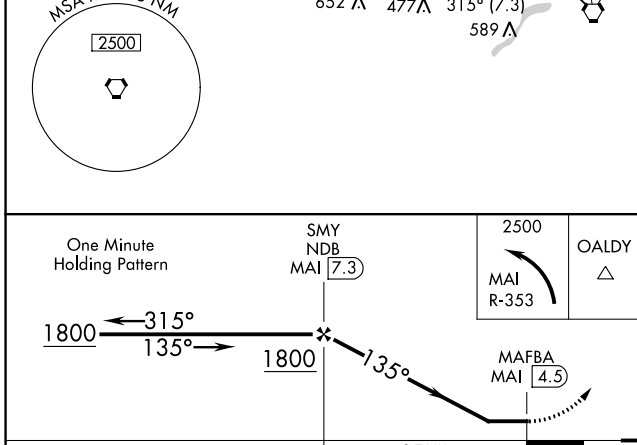
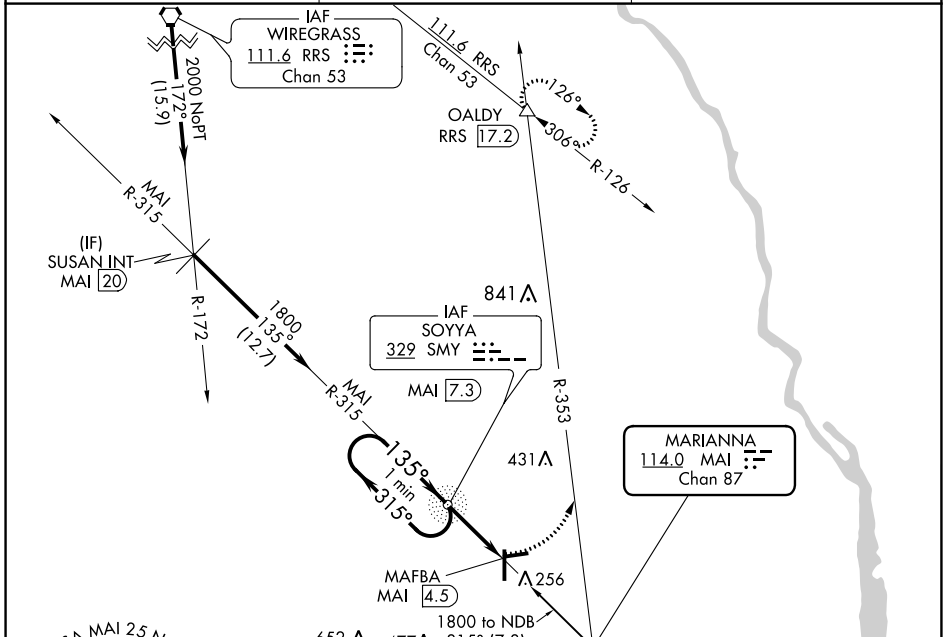
VORTAC MAI 114.0 Chan 87	APP CRS 135°	Rwy Idg TDZE Apt Elev N/A N/A 110
---------------------------------------	------------------------	-----------------------------------------------------------------------

VOR-B
MARIANNA MUNI (MAI)

▼ Helicopter visibility reduction below 1 SM NA. ADF or DME required.
▲ When local altimeter not received, use Bainbridge altimeter setting; Increase all MDA 80 feet and Circling Cats C/D visibility 1/4 SM. Circling Rwy 26 NA at night.

MISSED APPROACH: Climbing left turn to 2500 via MAI R-353 to OALDY INT/RRS 17.2 DME and hold.

ASOS 133.525	CAIRNS APP CON * 133.75 270.35	UNICOM 123.0 (CTAF) 0
------------------------	------------------------------------------	---------------------------------



CATEGORY	FAF to MAP 2.7 NM			
	A	B	C	D
☐ CIRCLING	720-1	610 (700-1)	720-1 3/4 610 (700-1 3/4)	900-2 1/2 790 (800-2 1/2)
	Knots	60	90	120
	Min:Sec	2:42	1:48	1:21
			1:05	0:54

SE-3, 09 SEP 2021 to 07 OCT 2021

SE-3, 09 SEP 2021 to 07 OCT 2021