

NDB LX <sup>Y</sup> <b>329</b>	APP CRS <b>328°</b>	Rwy Idg TDZE Apt Elev	<b>N/A</b> <b>N/A</b> <b>544</b>
-----------------------------------	------------------------	-----------------------------	--

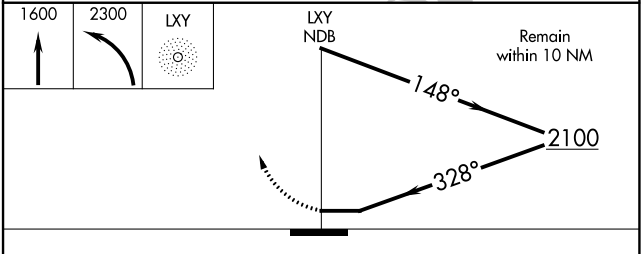
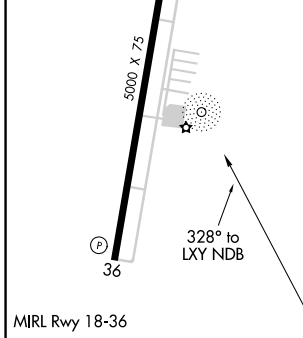
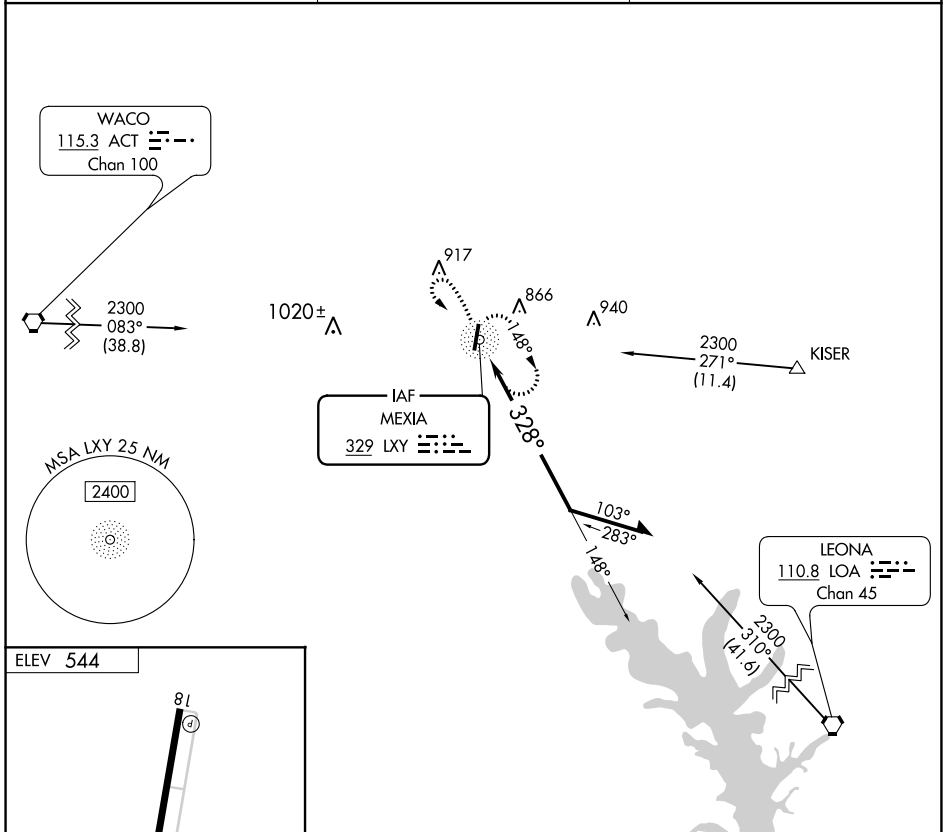
**NDB-A**

MEXIA-LIMESTONE COUNTY (LXY)

⚠️ **NA** Obtain local altimeter setting on CTAF; when not received, use Waco Rgnl altimeter setting and increase all MDA 100 feet and Cat C visibility ¼ mile. Rwy 36 helicopter visibility reduction below ¾ SM NA.

MISSED APPROACH: Climb to 1600 then climbing left turn to 2300 direct LXY NDB and hold.

AWOS-3 <b>127.275</b>	WACO APP CON <b>127.65 352.0</b>	UNICOM <b>122.8</b> (CTAF)
--------------------------	-------------------------------------	-------------------------------



CATEGORY	A	B	C	D
CIRCLING	1080-1	536 (600-1)	1180-1¾ 636 (700-1¾)	NA

SC-5, 03 DEC 2020 to 31 DEC 2020

SC-5, 03 DEC 2020 to 31 DEC 2020

WAAS CH <b>69228</b> <b>W36A</b>	APP CRS <b>005°</b>	Rwy Idg TDZE Apt Elev	<b>5000</b> <b>541</b> <b>545</b>
--	------------------------	-----------------------------	---

# RNAV (GPS) RWY 36

MEXIA-LIMESTONE COUNTY (L.X.Y)

**▽** DME/DME RNP-0.3 NA. Helicopter visibility reduction below ¾ SM NA. Obtain local altimeter setting on CTAF; when not received, use Waco Rgnl altimeter setting and increase all MDA 100 feet; increase LP Cat C visibility ¼ mile and LNAV and circling Cat C visibility ¼ mile.

**△ NA**

**MISSED APPROACH:**  
Climb to 2400 direct JUVOT and hold.

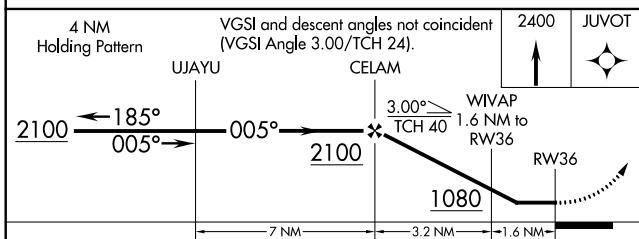
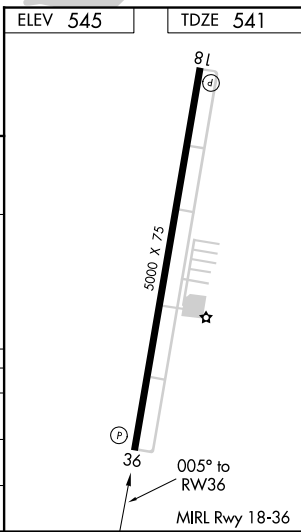
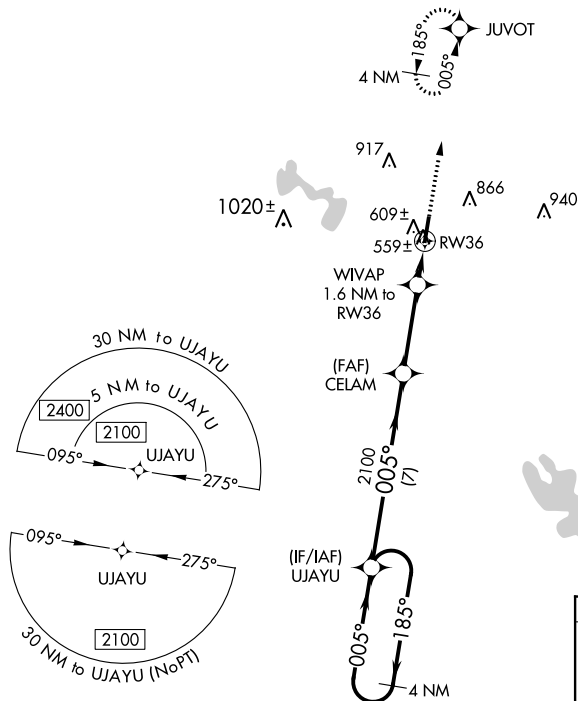
AWOS-3  
**127.275**

WACO APP CON  
**127.65 352.0**

UNICOM  
**122.8 (CTAF)**

SC-5, 03 DEC 2020 to 31 DEC 2020

SC-5, 03 DEC 2020 to 31 DEC 2020



CATEGORY	A	B	C	D
LP MDA	860-1	319 (400-1)		NA
LNAV MDA	880-1	339 (400-1)		NA
CIRCLING	960-1 415 (500-1)	1000-1 456 (500-1)	1180-1¾ 636 (700-1¾)	NA