

RNAV (GPS) RWY 2

LAS VEGAS MUNI (LVS)

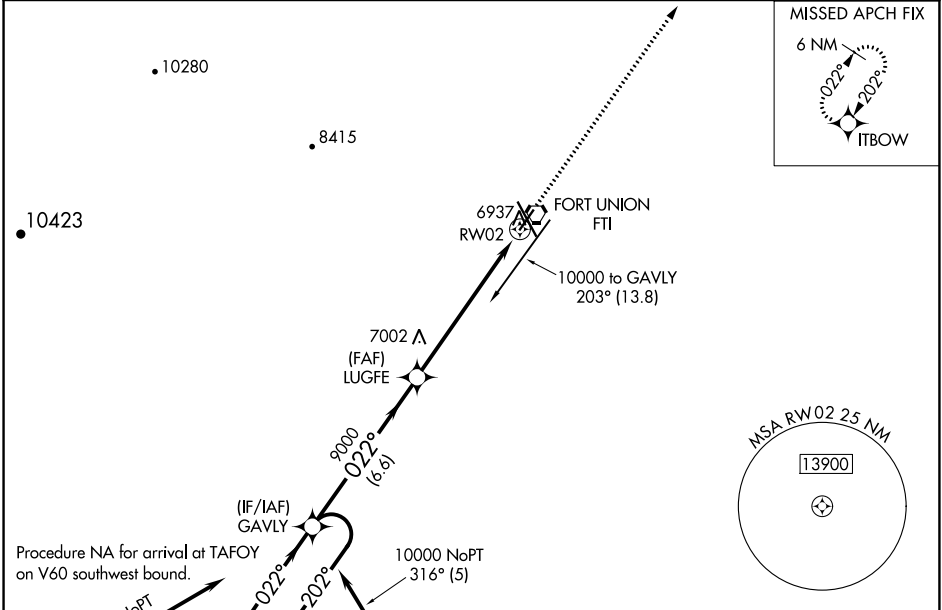
APP CRS 022°	Rwy Idg 5006
	TDZE 6870
	Apt Elev 6877

RNP APCH-GPS.

▽ Inop table does not apply to Cat C. When local altimeter not received, use Santa Fe Muni altimeter setting and increase all MDAs 200 feet; increase LNAV Cat C visibility to 1 1/4 SM and Circling Cat C visibility to 2 1/4 SM.

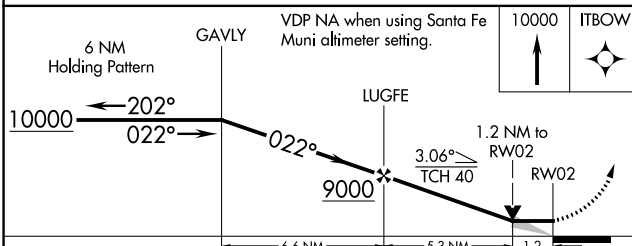
▲ MISSED APPROACH: Climb to 10000 direct ITBOW and hold.

ASOS 118.525	ALBUQUERQUE CENTER 132.8 346.35	UNICOM 122.8 (CTAF) 0
------------------------	---	---------------------------------

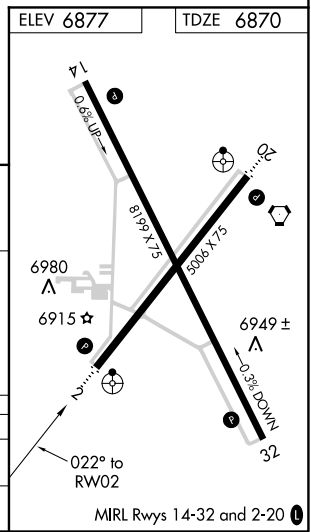


Procedure NA for arrival at TAFOY on V60 southwest bound.

Procedure NA for arrival on ACH VORTAC airway radials 255 CW 285.



CATEGORY	A	B	C	D
LNAV MDA	7280-3/4	410 (500-3/4)	7280-1 1/4 410 (500-1 1/4)	NA
CIRCLING	7420-1	543 (600-1)	7420-1 1/2 543 (600-1 1/2)	NA



SW-1, 04 NOV 2021 to 02 DEC 2021

SW-1, 04 NOV 2021 to 02 DEC 2021

RNAV (GPS) RWY 20

LAS VEGAS MUNI (LVS)

APP CRS 202°	Rwy Idg 5006
	TDZE 6867
	Apt Elev 6877

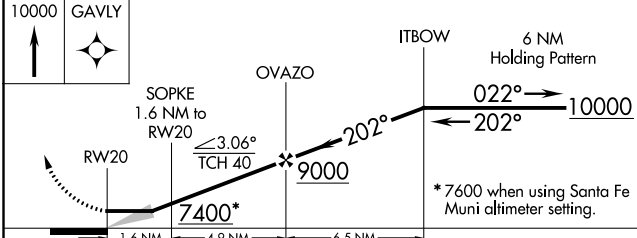
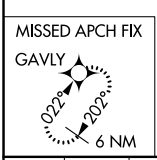
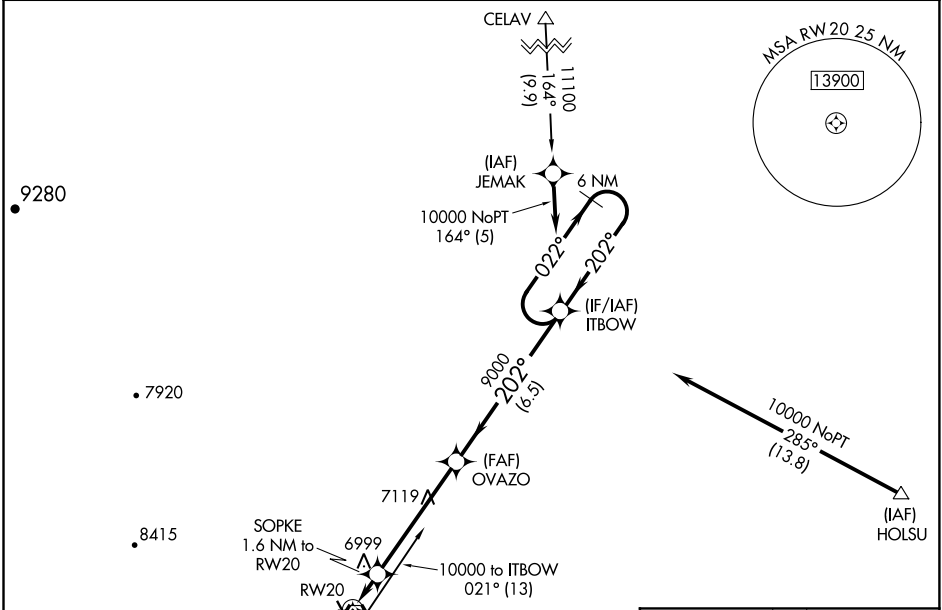
RNP APCH-GPS.

⚠ When local altimeter setting not received, use Santa Fe Muni altimeter setting and increase all MDAs 200 feet; increase LNAV Cat C visibility to 1½ SM and Circling Cat C visibility to 2¼ SM. Straight-in minimums NA when using Santa Fe Muni altimeter setting.

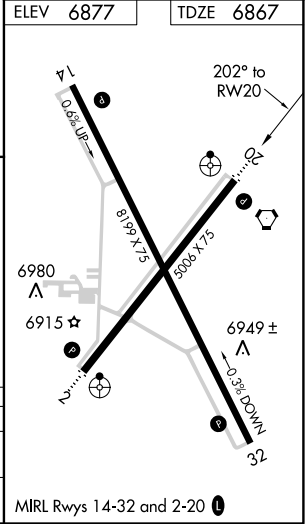
ODALS

MISSED APPROACH: Climb to 10000 direct GAVLY and hold.

ASOS 118.525	ALBUQUERQUE CENTER 132.8 346.35	UNICOM 122.8 (CTAF)
------------------------	---	-------------------------------



CATEGORY	A	B	C	D
LNAV MDA	7260-¾	393 (400-¾)		NA
CIRCLING	7420-1	543 (600-1)	7420-1½ 543 (600-1½)	NA



SW-1, 04 NOV 2021 to 02 DEC 2021

SW-1, 04 NOV 2021 to 02 DEC 2021

RNAV (GPS) RWY 32

LAS VEGAS MUNI (LVS)

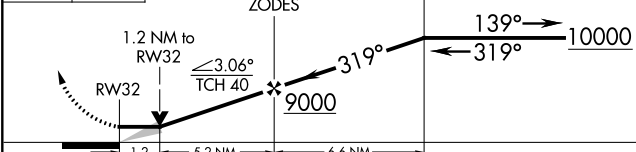
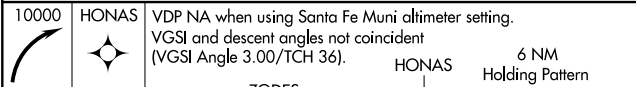
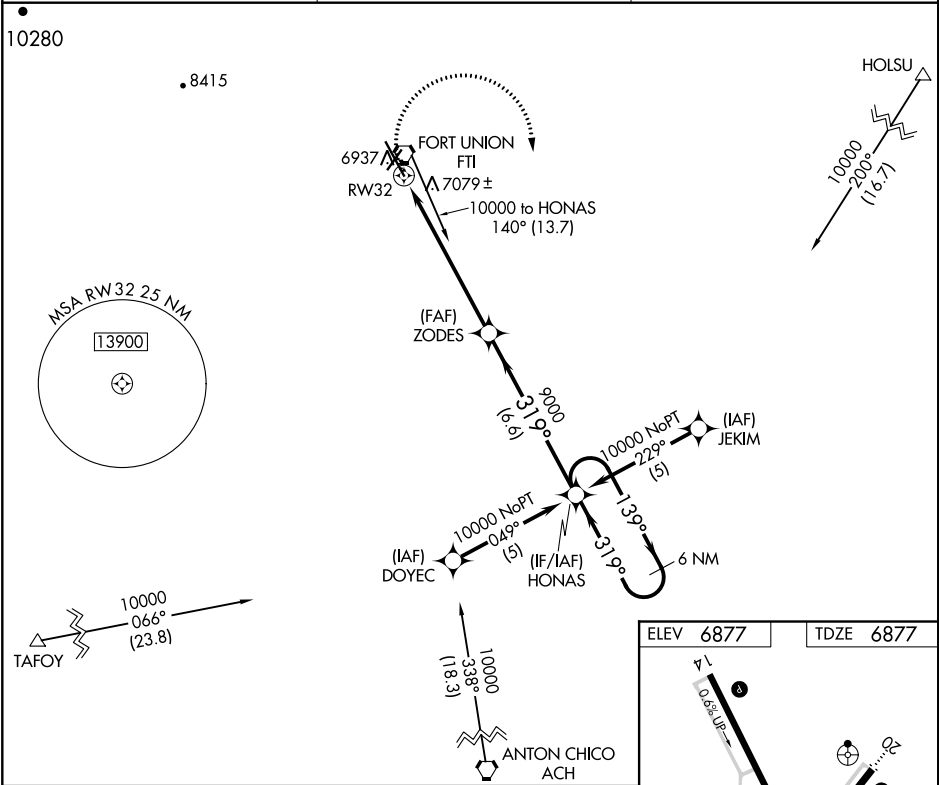
APP CRS 319°	Rwy Idg 8199
	TDZE 6877
	Apt Elev 6877

RNP APCH-GPS.

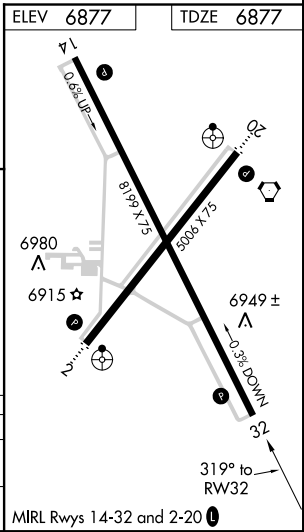
▼ When local altimeter not received, used Santa Fe Muni altimeter setting and increase all MDA 200 feet; increase LNAV Cat C visibility to 1 7/8 SM and Circling Cat C visibility to 2 1/4 SM.

MISSED APPROACH: Climbing right turn to 10000 direct HONAS and hold.

ASOS 118.525	ALBUQUERQUE CENTER 132.8 346.35	UNICOM 122.8 (CTAF) 0
------------------------	---	---------------------------------



CATEGORY	A	B	C	D
LNAV MDA	7320-1	443 (500-1)	7320-1 1/4 443 (500-1 1/4)	NA
CIRCLING	7420-1	543 (600-1)	7420-1 1/2 543 (600-1 1/2)	NA



SW-1, 04 NOV 2021 to 02 DEC 2021

SW-1, 04 NOV 2021 to 02 DEC 2021

VORTAC FTI 117.3 Chan 120	APP CRS 192°	Rwy Idg TDZE Apt Elev	5006 6867 6877
---	------------------------	-----------------------------	---

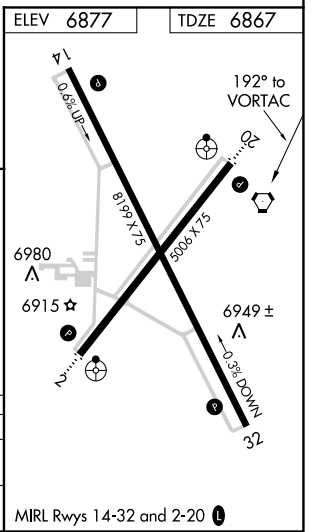
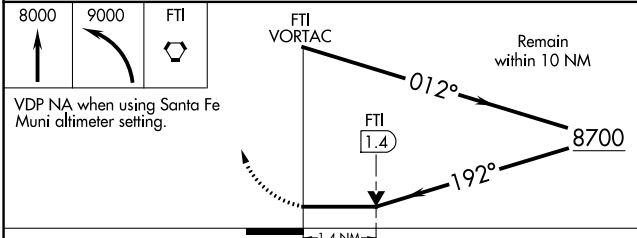
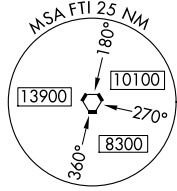
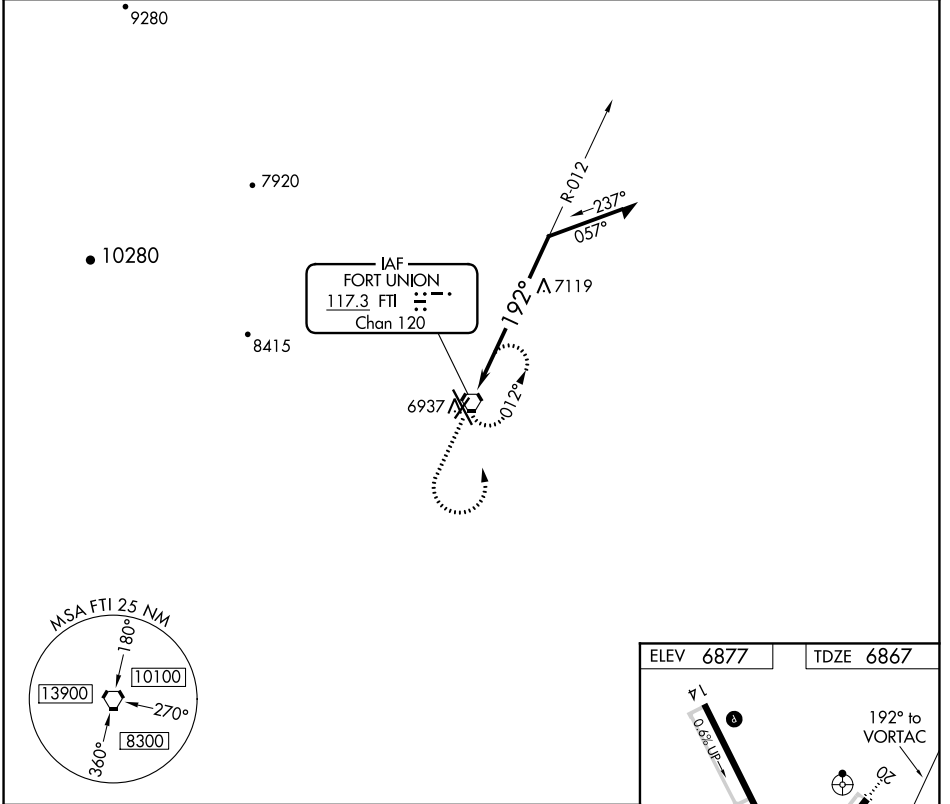
VOR RWY 20

LAS VEGAS MUNI (LVS)

∇ Inoperative table does not apply. When local altimeter not received, use Santa Fe Muni altimeter setting and increase all MDA 200 feet; increase Circling Cat C visibility 3/4 SM.

⚠ MISSED APPROACH: Climb to 8000 then climbing left turn to 9000 direct FTI VORTAC and hold.

ASOS 118.525	ALBUQUERQUE CENTER 132.8 346.35	UNICOM 122.8 (CTAF) 0
------------------------	---	---------------------------------



CATEGORY	A	B	C	D
S-20	7420-1	553 (600-1)	7420-1½ 553 (600-1½)	NA
C CIRCLING	7420-1	543 (600-1)	7420-1½ 543 (600-1½)	NA

SW-1, 04 NOV 2021 to 02 DEC 2021

SW-1, 04 NOV 2021 to 02 DEC 2021