

| | | |
|-------------|----------|-------------|
| APP CRS | Rwy Idg | 4201 |
| 172° | TDZE | 2009 |
| | Apt Elev | 2012 |

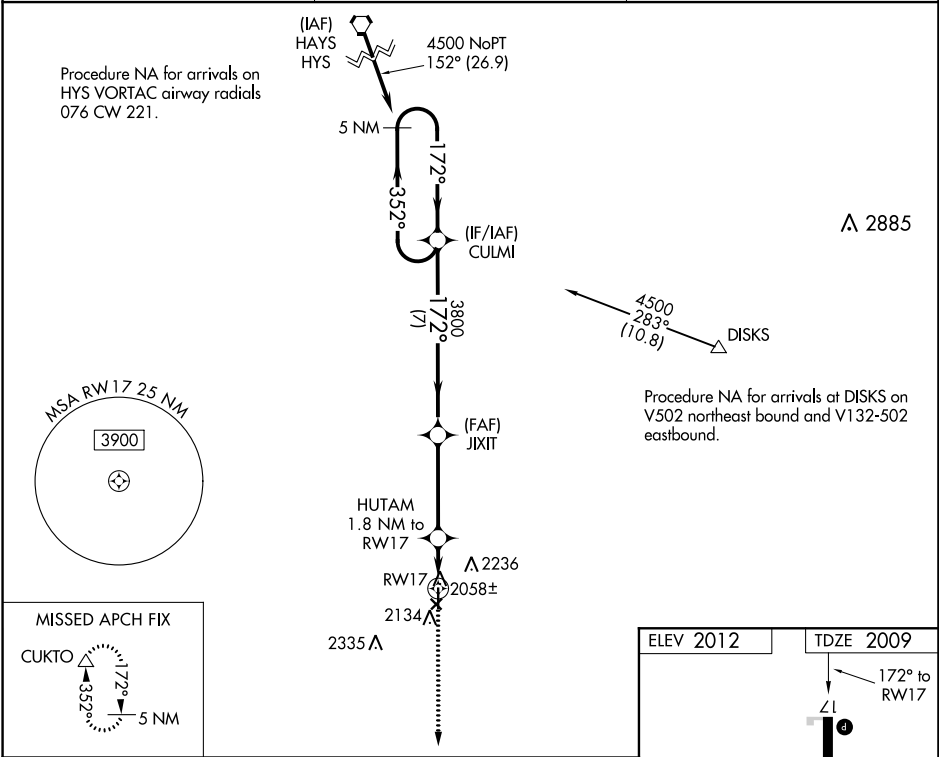
RNAV (GPS) RWY 17

LARNED-PAWNEE COUNTY (LQR)

⚠ DME/DME RNP-0.3 NA. Procedure NA at night. Visibility reduction by helicopters NA. When local altimeter setting not received, use Great Bend altimeter setting: increase all MDA 60 feet and Circling Cat C visibility ¼ mile. Circling NA to Rwy's 4, 12, 22 and 30.

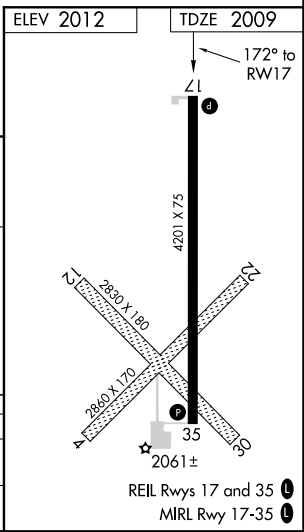
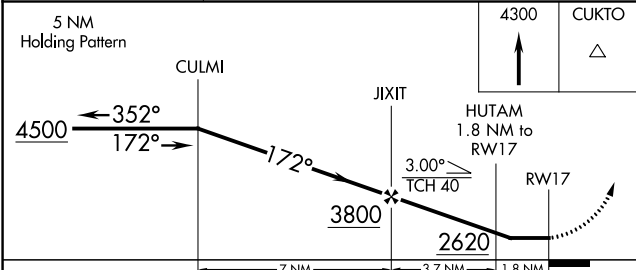
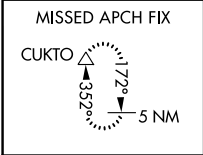
MISSED APPROACH: Climb to 4300 direct CUKTO and hold.

| | | |
|--------------------------|--|-------------------------------|
| AWOS-3 119.875 | KANSAS CITY CENTER 124.4 322.4 | UNICOM 122.8 (CTAF) |
|--------------------------|--|-------------------------------|



NC-2, 11 AUG 2022 to 08 SEP 2022

NC-2, 11 AUG 2022 to 08 SEP 2022



| CATEGORY | A | B | C | D |
|----------|-----------------------|-----------------------|-------------------------|----|
| LNVA MDA | 2320-1 311 (400-1) | | | NA |
| CIRCLING | 2500-1 488 (500-1) | 2600-1 588 (600-1) | 2640-1¾ 628 (700-1¾) | NA |

| | | | |
|--|------------------------|-----------------------------|---|
| WAAS CH 82020 W35A | APP CRS 352° | Rwy Idg TDZE Apt Elev | 4201 2012 2012 |
|--|------------------------|-----------------------------|---|

RNAV (GPS) RWY 35

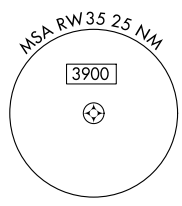
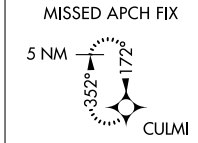
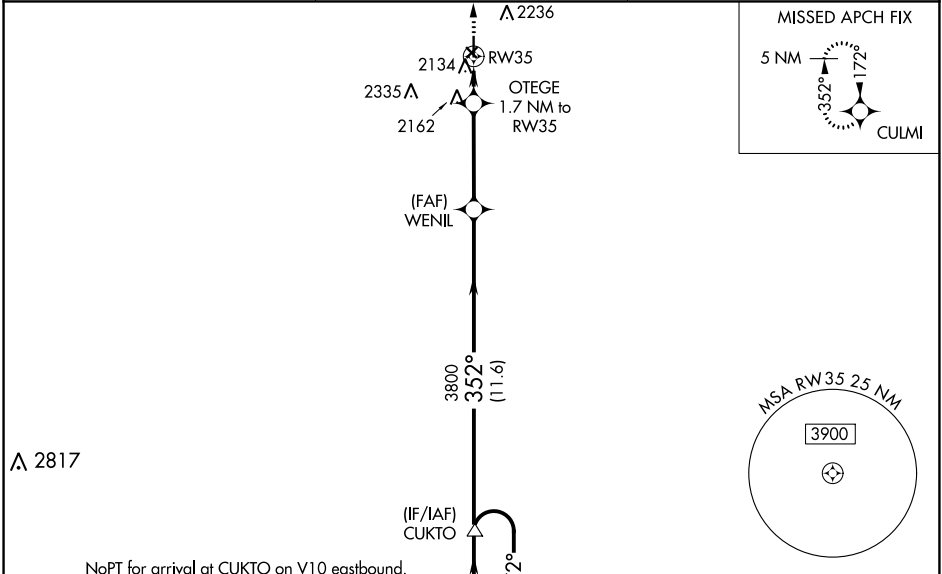
LARNED-PAWNEE COUNTY (L.Q.R.)

RNP APCH.

⚠ Baro-VNAV NA when using Great Bend altimeter setting. For uncompensated Baro-VNAV systems, LNAV/VNAV NA below -18°C or above 54°C. Rwy 35 helicopter visibility reduction below 1 SM NA. When local altimeter setting not received, use Great Bend altimeter setting and increase all DA 49 feet and LNAV/VNAV all Cats visibility 1/8 SM; increase all MDA 60 feet and increase LNAV Cat C and Circling Cat C visibility 1/4 SM. Circling NA to Rwy 4, 12, 22 and 30. Procedure NA at night.

MISSED APPROACH:
Climb to 4500 direct CULMI and hold.

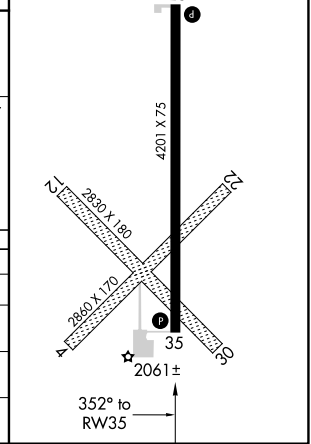
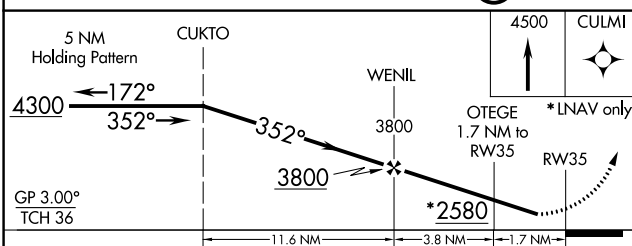
| | | |
|--------------------------|--|---------------------------------|
| AWOS-3 119.875 | KANSAS CITY CENTER 124.4 322.4 | UNICOM 122.8 (CTAF) 0 |
|--------------------------|--|---------------------------------|



⚠ 2817

NoPT for arrival at CUKTO on V10 eastbound.

| | |
|-----------------------------|-----------|
| ELEV 2012 | TDZE 2012 |
| REIL Rwy 17 and 35 0 | |
| MIRL Rwy 17-35 0 | |



| CATEGORY | A | B | C | D |
|--------------|-----------------------|-----------------------|-------------------------------|----|
| LPV DA | 2262-1 | 250 (300-1) | | NA |
| LNAV/VNAV DA | 2337-1 1/8 | 325 (400-1 1/8) | | NA |
| LNAV MDA | 2420-1 | 408 (500-1) | 2420-1 1/2 408 (500-1 1/2) | NA |
| CIRCLING | 2500-1 488 (500-1) | 2600-1 588 (600-1) | 2640-1 3/4 628 (700-1 3/4) | NA |

NC-2, 11 AUG 2022 to 08 SEP 2022

NC-2, 11 AUG 2022 to 08 SEP 2022