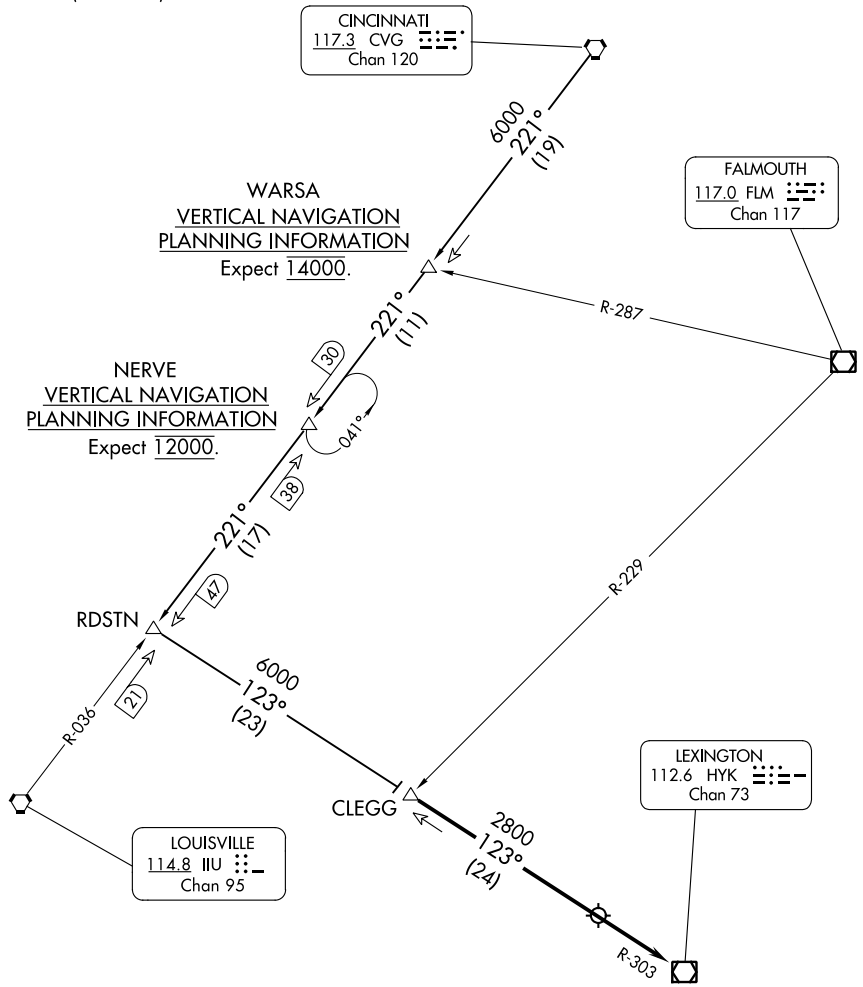


(CLEGG.CLEGG5) 24025
CLEGG FIVE ARRIVAL

AL-697 (FAA)

BLUE GRASS (LEX)
 LEXINGTON, KENTUCKY

LEXINGTON APP CON
 120.15 259.3 (040°-220°)
 120.75 298.9 (221°-039°)
 ATIS
 126.3



SE-1, 22 FEB 2024 to 21 MAR 2024

SE-1, 22 FEB 2024 to 21 MAR 2024

ARRIVAL ROUTE DESCRIPTION

CINCINNATI TRANSITION (CVG.CLEGG5):
 From over CVG VORTAC on CVG R-221 to RDSTN
 then on HYK VOR/DME R-303 to CLEGG. Thence...

...from over CLEGG on HYK R-303 to HYK VOR/DME.
 Expect radar vectors to final approach course after
 CLEGG.

NOTE: RADAR required.
 NOTE: DME required.

NOTE: Chart not to scale.

CLEGG FIVE ARRIVAL
 (CLEGG.CLEGG5) 25APR19

LEXINGTON, KENTUCKY
 BLUE GRASS (LEX)