

LOC/DME I-DVR <b>111.9</b> Chan <b>56</b>	APP CRS <b>187°</b>	Rwy Idg <b>5200</b> TDZE <b>573</b> Apt Elev <b>603</b>
---	------------------------	---

# ILS or LOC RWY 18

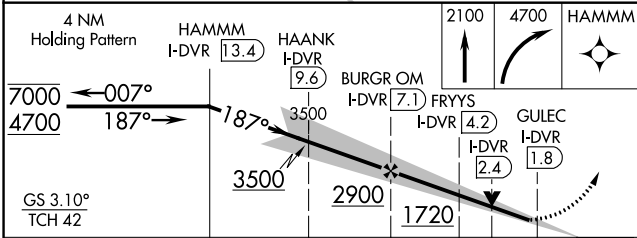
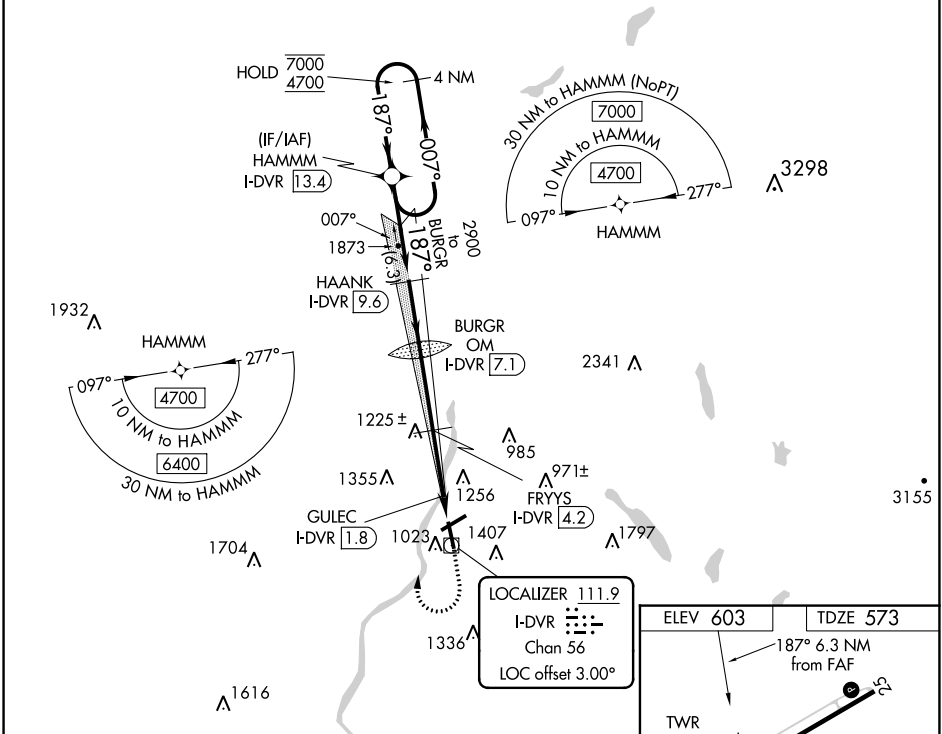
LEBANON MUNI (L.E.B)

DME required. RNP APCH-GPS.

**Autopilot coupled approach NA below 750.**

**MISSED APPROACH:** Climb to 2100 then climbing right turn to 4700 direct HAMMM and hold, continue climb-in-hold to 4700.

ATIS <b>118.65</b>	BOSTON CENTER <b>134.7 269.475</b>	LEBANON TOWER ★ <b>125.95 (CTAF) 235.775</b>	GND CON <b>121.6</b>	UNICOM <b>122.95</b>
-----------------------	---------------------------------------	---	-------------------------	-------------------------



ELEV 603	TDZE 573
187° 6.3 NM from FAF	
TWR 634	81
5498 X 100	
0.98 X 100	
5200 X 100	
36	
MIRL Rwy 7-25	!
HIRL Rwy 18-36	!
REIL Rws 7 and 25	!
REIL Rwy 18	!
FAF to MAP 5.3 NM	
Knots	60 90 120 150 180
Min:Sec	5:18 3:32 2:39 2:07 1:46

CATEGORY	A	B	C	D
S-ILS 18		915-1	342 (400-1)	
S-LOC 18	1320-1¼	747 (800-1¼)	1320-2	747 (800-2)
CIRCLING	1640-1¼ 1037 (1100-1¼)	1720-1½ 1117 (1200-1½)	1820-3 1217 (1300-3)	2020-3 1417 (1500-3)

NE-1, 22 FEB 2024 to 21 MAR 2024

NE-1, 22 FEB 2024 to 21 MAR 2024

WAAS CH <b>93710</b> <b>W18A</b>	APP CRS <b>184°</b>	Rwy Idg TDZE Apt Elev	<b>5200</b> <b>573</b> <b>603</b>
--	------------------------	-----------------------------	---

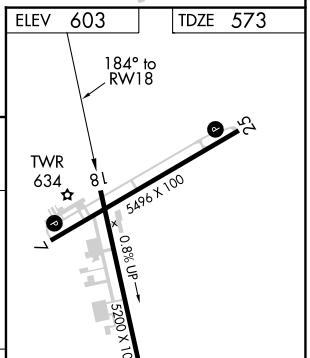
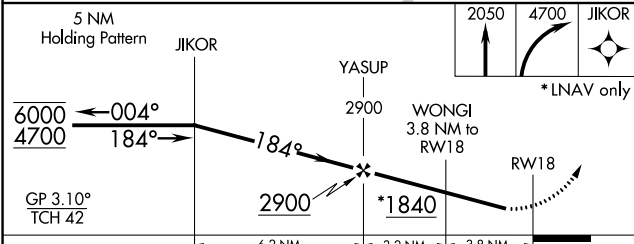
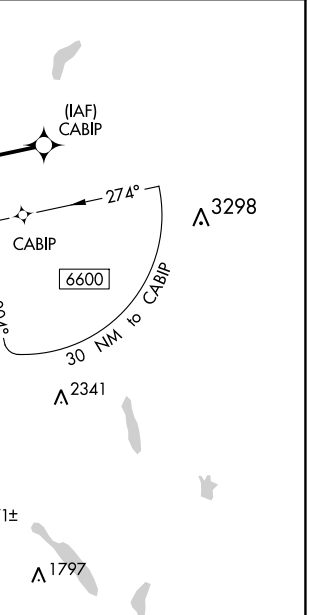
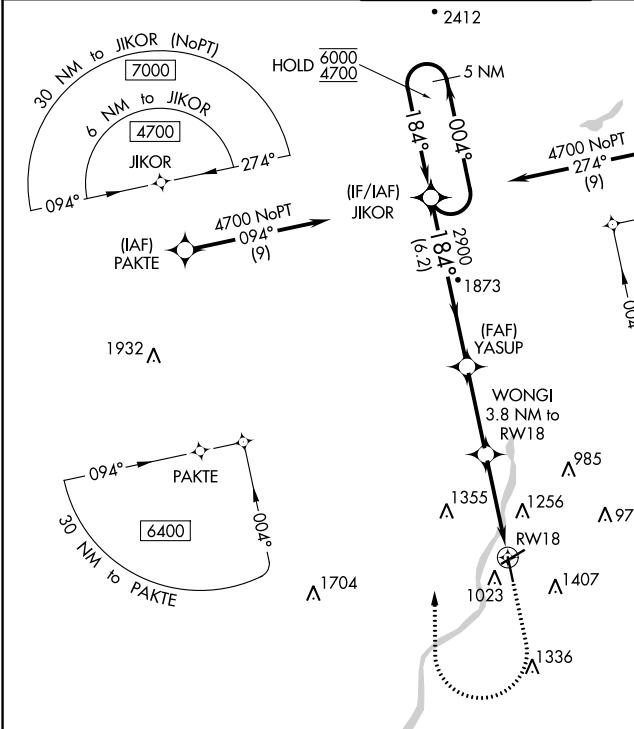
# RNAV (GPS) RWY 18

LEBANON MUNI (L.E.B)

RNP APCH.  
 Rwy 18 helicopter visibility reduction below 3/4 SM NA.  
 -20°C

MISSED APPROACH: Climb to 2050 then climbing right turn to 4700 direct JIKOR and hold, continue climb in hold to 4700.

ATIS <b>118.65</b>	BOSTON CENTER <b>134.7 269.475</b>	LEBANON TOWER ★ <b>125.95 (CTAF) 0 235.775</b>	GND CON <b>121.6</b>	UNICOM <b>122.95</b>
-----------------------	---------------------------------------	---	-------------------------	-------------------------



CATEGORY	A	B	C	D
LPV DA	933-1 360 (400-1)			
LNAV MDA	1700-1¼ 1127 (1100-1¼)	1700-1½ 1127 (1100-1½)	1700-3	1127 (1100-3)
CIRCLING	1700-1¼ 1097 (1100-1¼)	1720-1½ 1117 (1200-1½)	1820-3 1217 (1300-3)	2020-3 1417 (1500-3)

MIRL Rwy 7-25

HIRL Rwy 18-36

REIL Rwys 7 and 25

REIL Rwy 18

NE-1, 22 FEB 2024 to 21 MAR 2024

NE-1, 22 FEB 2024 to 21 MAR 2024

APP CRS <b>255°</b>	Rwy Idg TDZE Apt Elev	<b>5496</b> <b>574</b> <b>603</b>
------------------------	-----------------------------	---

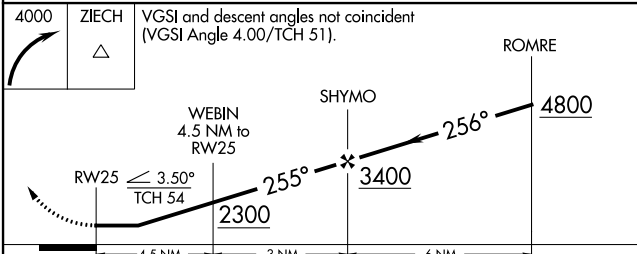
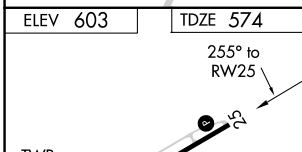
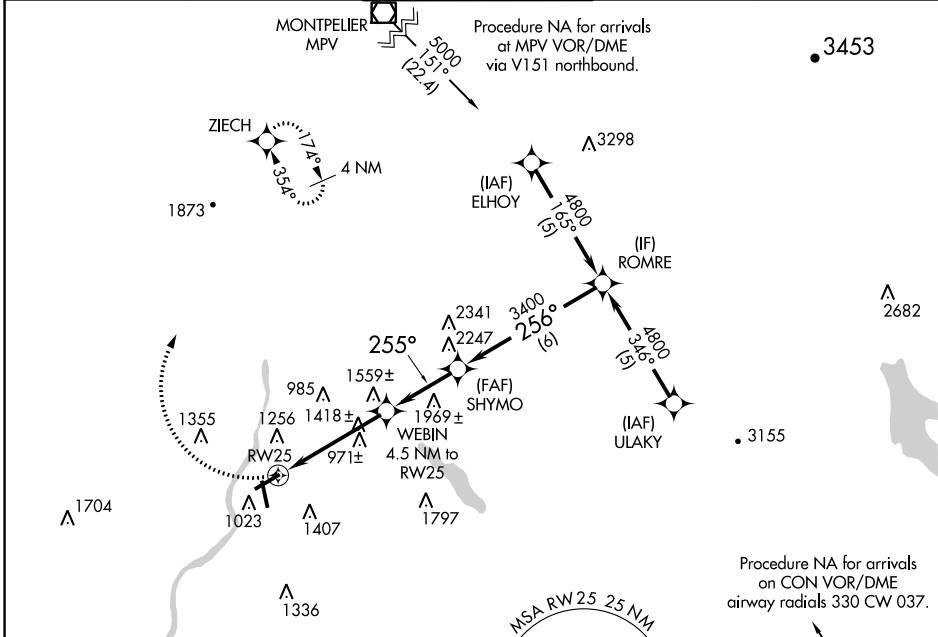
# RNAV (GPS) RWY 25

LEBANON MUNI (L.E.B)

RNP APCH.  
 Rwy 25 helicopter visibility reduction below 1 SM NA.  
 -20°C

MISSED APPROACH: Climbing right turn to 4000 direct ZIECH and hold.

ATIS <b>118.65</b>	BOSTON CENTER <b>134.7 269.475</b>	LEBANON TOWER ★ <b>125.95 (CTAF) 0 235.775</b>	GND CON <b>121.6</b>	UNICOM <b>122.95</b>
-----------------------	---------------------------------------	---	-------------------------	-------------------------



- MIRL Rwy 7-25
- HIRL Rwy 18-36
- REIL Rwy 7 and 25
- REIL Rwy 18

CATEGORY	A	B	C	D
LNAV MDA	1680-1¼ 1106 (1100-1¼)	1680-1½ 1106 (1100-1½)	1680-3	1106 (1100-3)
CIRCLING	1680-1¼ 1077 (1100-1¼)	1740-1½ 1137 (1200-1½)	1880-3 1277 (1300-3)	2020-3 1417 (1500-3)

NE-1, 22 FEB 2024 to 21 MAR 2024

NE-1, 22 FEB 2024 to 21 MAR 2024

APP CRS	Rwy Idg	<b>5200</b>
<b>019°</b>	TDZE	<b>603</b>
	Apt Elev	<b>603</b>

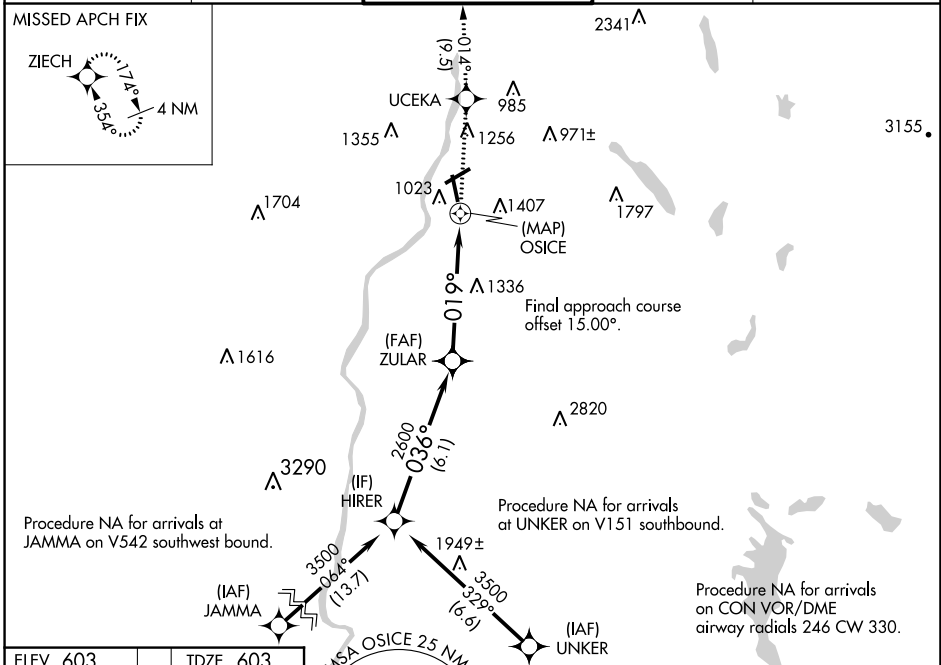
# RNAV (GPS) RWY 36

LEBANON MUNI (L.E.B)

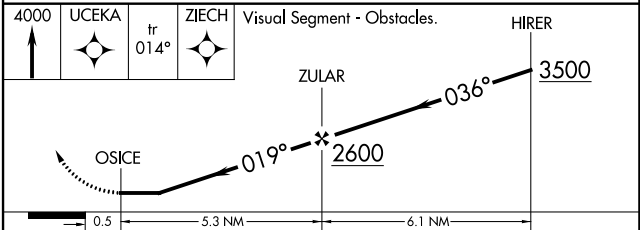
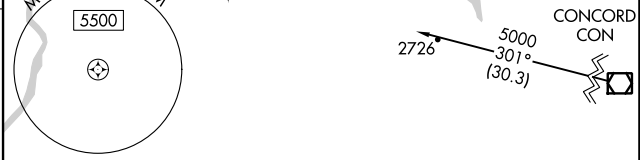
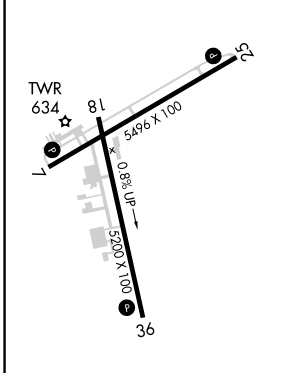
**⚠** Rwy 36 helicopter visibility reduction below 3/4 SM  
**❄** -20°C NA. DME/DME RNP-0.3 NA.

MISSED APPROACH: Climb to 4000 direct UCEKA then on track 014° to ZIECH and hold.

ATIS <b>118.65</b>	BOSTON CENTER <b>134.7 269.475</b>	LEBANON TOWER ★ <b>125.95 (CTAF) 235.775</b>	GND CON <b>121.6</b>	UNICOM <b>122.95</b>
-----------------------	---------------------------------------	---	-------------------------	-------------------------



ELEV 603 TDZE 603



- MIRL Rwy 7-25
- HIRL Rwy 18-36
- REIL Rwy 7 and 25
- REIL Rwy 18

CATEGORY	A	B	C	D
LNAV MDA	1740-1¼ 1137 (1200-1¼)	1740-1½ 1137 (1200-1½)	1740-3	1137 (1200-3)
<b>C</b> CIRCLING	1740-1¼ 1137 (1200-1¼)	1740-1½ 1137 (1200-1½)	1880-3 1277 (1300-3)	2020-3 1417 (1500-3)

NE-1, 22 FEB 2024 to 21 MAR 2024

NE-1, 22 FEB 2024 to 21 MAR 2024

# RNAV (GPS) RWY 7

LEBANON MUNI (L.E.B)

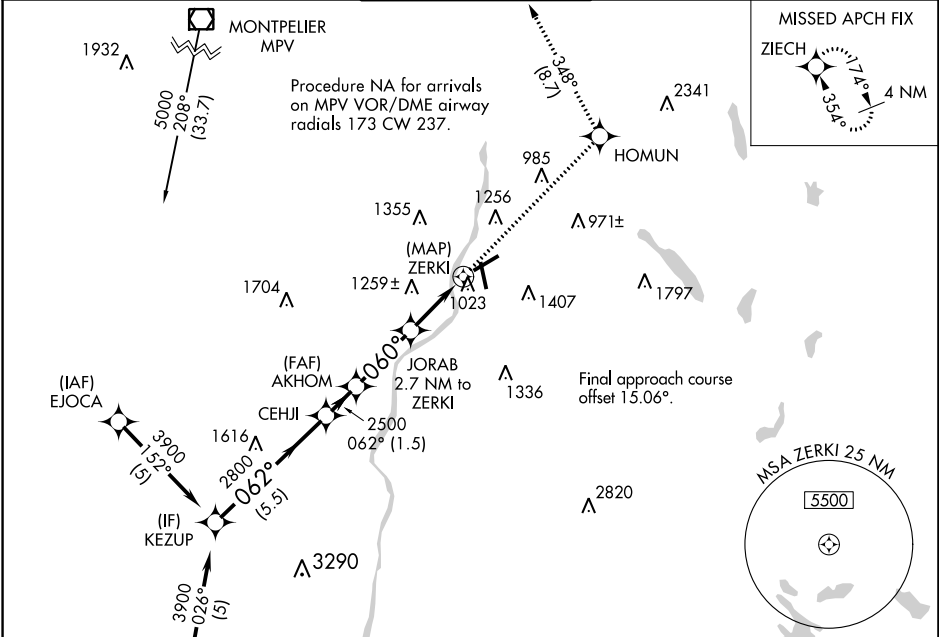
APP CRS	Rwy Idg	<b>5496</b>
<b>060°</b>	TDZE	<b>564</b>
	Apt Elev	<b>603</b>

**▼**  
**▲**  
**❄** -20°C

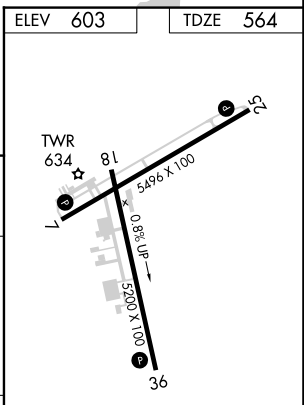
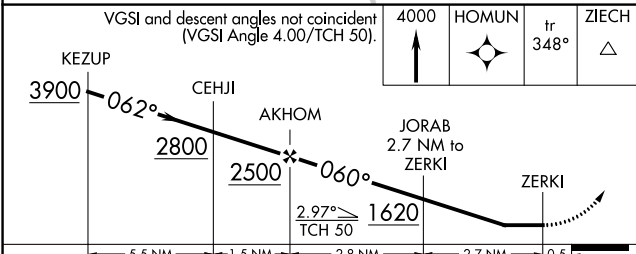
Rwy 7 helicopter visibility reduction below 3/4 SM NA.  
 DME/DME RNP-0.3 NA.

MISSED APPROACH: Climb to 4000 direct HOMUN and on track 348° to ZIECH and hold.

ATIS <b>118.65</b>	BOSTON CENTER <b>134.7 269.475</b>	LEBANON TOWER ★ <b>125.95 (CTAF) 235.775</b>	GND CON <b>121.6</b>	UNICOM <b>122.95</b>
-----------------------	---------------------------------------	---	-------------------------	-------------------------



ELEV	603	TDZE	564
------	-----	------	-----



CATEGORY	A	B	C	D
LNAV MDA	1460-1¼ 1037 (1100-1¼)	896 (900-1¼) 1137 (1200-1½)	1460-2¾ 896 (900-2¾) 1880-3 1277 (1300-3)	1460-3 896 (900-3) 2020-3 1417 (1500-3)
<b>C</b> CIRCLING	1640-1¼ 1037 (1100-1¼)	1740-1½ 1137 (1200-1½)	1880-3 1277 (1300-3)	2020-3 1417 (1500-3)

MIRL Rwy 7-25 **Ⓛ**  
 HIRL Rwy 18-36 **Ⓛ**  
 REIL Rws 7 and 25 **Ⓛ**  
 REIL Rwy 18

NE-1, 22 FEB 2024 to 21 MAR 2024

NE-1, 22 FEB 2024 to 21 MAR 2024