

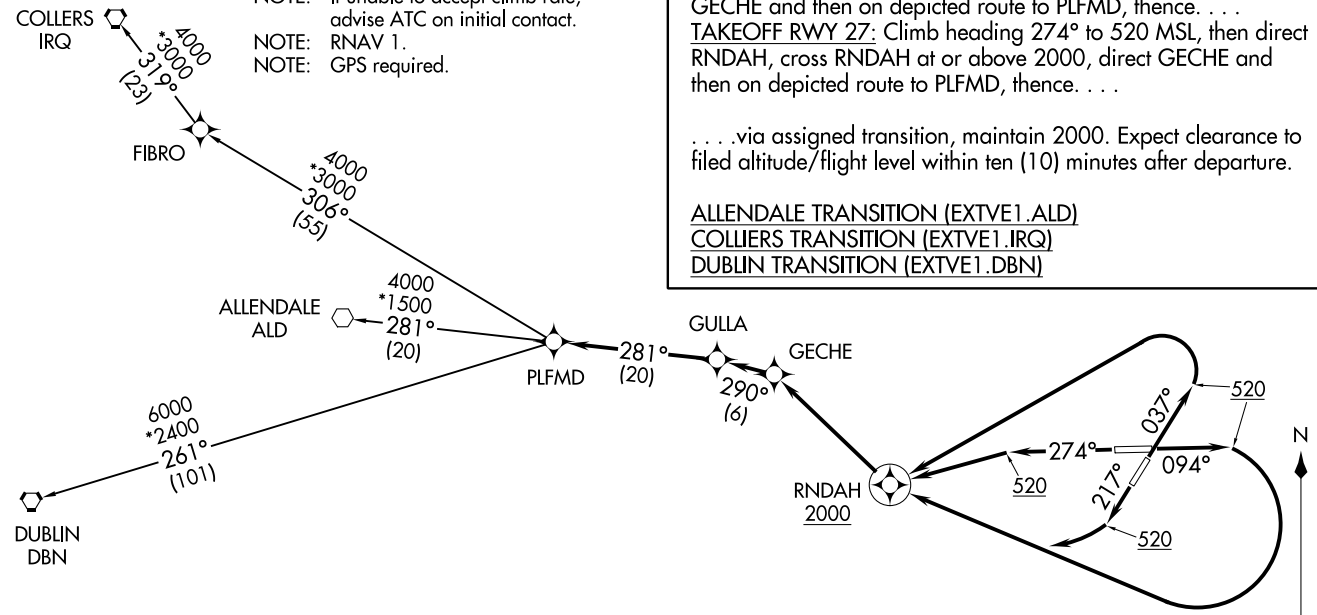
EXECUTIVE ONE DEPARTURE (RNAV)
(EXTVE1.PLFMD) 25AUG11

CHARLESTON, SOUTH CAROLINA
CHARLESTON EXECUTIVE (JZI)

ATIS
124.75
CLNC DEL
119.85
GND CON
121.9 348.6
CTAF
122.8
CHARLESTON DEP CON
120.7 306.925

TAKEOFF MINIMUMS:
Rwy 4: ATC climb of 500' per NM to 900.
Rwy 9: ATC climb of 500' per NM to 800.
Rwy 22: Standard with minimum climb of 245' per NM to 520. ATC climb of 500' per NM to 1300.
Rwy 27: ATC climb of 500' per NM to 1500.

- NOTE: Transponder code will be issued by Charleston clearance delivery.
- NOTE: If unable to accept climb rate, advise ATC on initial contact.
- NOTE: RNAV 1.
- NOTE: GPS required.



NOTE: Chart not to scale.

DEPARTURE ROUTE DESCRIPTION

TAKEOFF RWY 4: Climb heading 037° to 520 MSL, then left turn direct RNDAH, cross RNDAH at or above 2000, direct GEICHE and then on depicted route to PLFMD, thence. . . .

TAKEOFF RWY 9: Climb heading 094° to 520 MSL, then right turn direct RNDAH, cross RNDAH at or above 2000, direct GEICHE and then on depicted route to PLFMD, thence. . . .

TAKEOFF RWY 22: Climb heading 217° to 520 MSL, then right turn direct RNDAH, cross RNDAH at or above 2000, direct GEICHE and then on depicted route to PLFMD, thence. . . .

TAKEOFF RWY 27: Climb heading 274° to 520 MSL, then direct RNDAH, cross RNDAH at or above 2000, direct GEICHE and then on depicted route to PLFMD, thence. . . .

. . . .via assigned transition, maintain 2000. Expect clearance to filed altitude/flight level within ten (10) minutes after departure.

- ALLENDALE TRANSITION (EXTVE1.ALD)
- COLLIERS TRANSITION (EXTVE1.IRQ)
- DUBLIN TRANSITION (EXTVE1.DBN)

(EXTVE1.PLFMD) 1728S
EXECUTIVE ONE DEPARTURE (RNAV)

AL-5354 (FAA)
CHARLESTON EXECUTIVE (JZI)
CHARLESTON, SOUTH CAROLINA

KIAWAH ONE DEPARTURE (RNAV)
(KIAWA1.LGRHD) 25AUG11

ATIS
124.75
CLNIC DEL
119.85
GND CON
121.9 348.6
CTAF
122.8
CHARLESTON DEP CON
120.7 306.925

TAKEOFF MINIMUMS:

Rwys 4, 9, 27: ATC climb of 500' per NM to 520.
Rwy 22: Standard with minimum climb of 245' per
NM to 520. ATC climb of 500' per NM to 520.

- NOTE: Transponder code will be issued by Charleston clearance delivery.
- NOTE: If unable to accept climb rate, advise ATC on initial contact.
- NOTE: GPS required.
- NOTE: RNAV 1.



NOTE: Chart not to scale.

MILIE

4000
*2400
216°
(88)

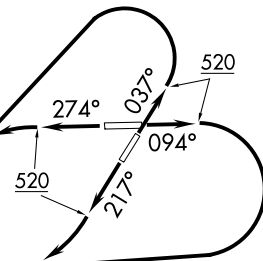
LGRHD

DEPARTURE ROUTE DESCRIPTION

- TAKEOFF RWY 4: Climb heading 037° to 520 MSL, then left turn direct LGRHD, thence. . . .
- TAKEOFF RWY 9: Climb heading 094° to 520 MSL, then right turn direct LGRHD, thence. . . .
- TAKEOFF RWY 22: Climb heading 217° to 520 MSL, then right turn direct LGRHD, thence. . . .
- TAKEOFF RWY 27: Climb heading 274° to 520 MSL, then left turn direct LGRHD, thence. . . .

. . . . via assigned transition/route, maintain 2000.
Expect clearance to filed altitude/flight level within ten (10) minutes after departure.

MILIE TRANSITION (KIAWA1.MILIE)



(KIAWA1.LGRHD) 17285
KIAWAH ONE DEPARTURE (RNAV)

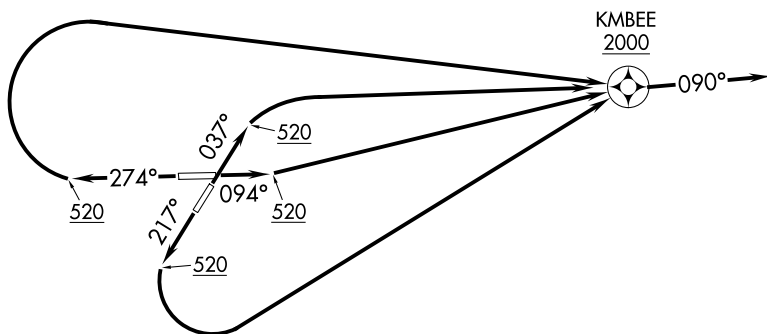
AL-5354 (FAA)

CHARLESTON EXECUTIVE (JZI)
CHARLESTON, SOUTH CAROLINA

KMBEE ONE DEPARTURE (RNAV)

ATIS
124.75
CLNC DEL
119.85
GND CON
121.9 348.6
CTAF
122.8
CHARLESTON DEP CON
120.7 306.925

- NOTE: Transponder code will be issued by Charleston clearance delivery.
- NOTE: If unable to accept climb rate or crossing restriction, advise ATC on initial contact.
- NOTE: RNAV 1.
- NOTE: GPS required.
- NOTE: RADAR required.



TAKEOFF MINIMUMS:
 Rwys 4, 22, 27: ATC climb of 500' per NM to 520.
 Rwy 9: ATC climb of 500' per NM to 620.

NOTE: Chart not to scale.

DEPARTURE ROUTE DESCRIPTION

TAKEOFF RWY 4: Climb heading 037° to 520 MSL, then right turn direct KMBEE, cross KMBEE at or above 2000, thence. . . .

TAKEOFF RWY 9: Climb heading 094° to 520 MSL, then direct KMBEE, cross KMBEE at or above 2000, thence. . . .

TAKEOFF RWY 22: Climb heading 217° to 520 MSL, then left turn direct KMBEE, cross KMBEE at or above 2000, thence. . . .

TAKEOFF RWY 27: Climb heading 274° to 520 MSL, then right turn direct KMBEE, cross KMBEE at or above 2000, thence. . . .

. . . fly heading 090° or as assigned by ATC, expect RADAR vectors on course. Maintain 2000. Expect clearance to filed altitude within ten (10) minutes after departure.