

WAAS CH 58138 W15A	APP CRS 148°	Rwy Idg 3999 TDZE 1067 Apt Elev 1067
--	------------------------	---

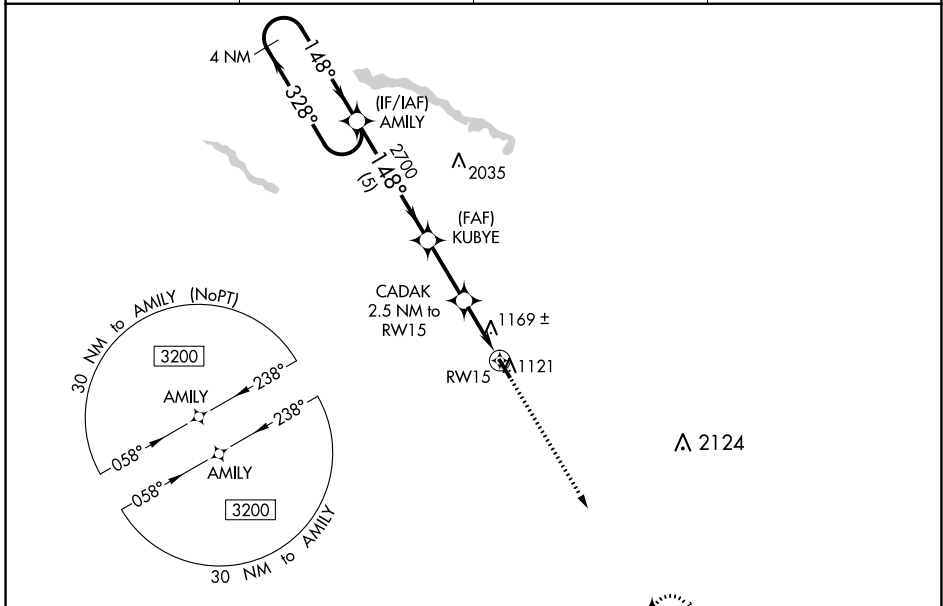
RNAV (GPS) RWY 15

ST JAMES MUNI (JYG)

⚠ DME/DME RNP-0.3 NA. For uncompensated Baro-VNAV systems, procedure NA below -17°C (2°F) or above 54°C (130°F). Baro-VNAV and VDP NA when using New Ulm altimeter setting. When local altimeter not received, use New Ulm, MN altimeter setting and increase LPV DA to 1372 feet and LNAV/VNAV DA to 1530 feet, and all MDA 60 feet.

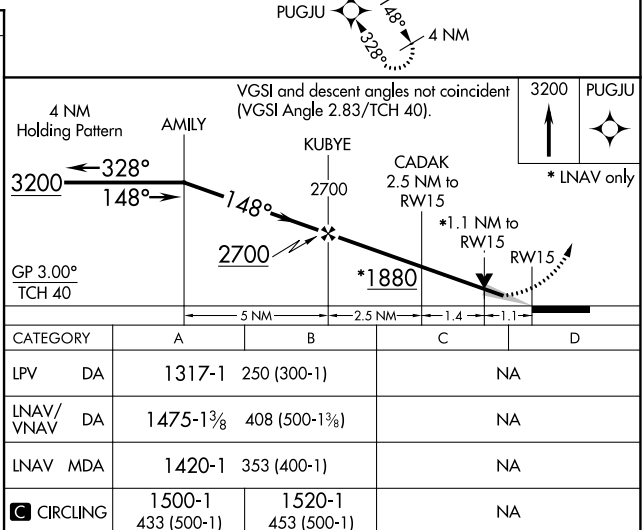
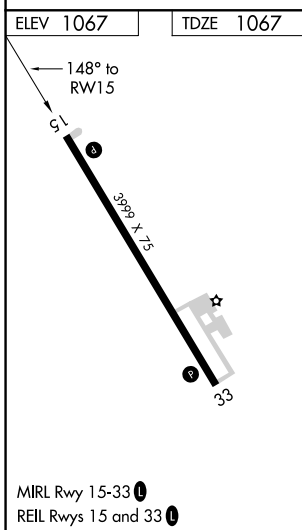
MISSED APPROACH: Climb to 3200 direct PUGJU and hold.

AWOS-3 123.7	MINNEAPOLIS CENTER 127.75 257.7	GCO 121.725	CTAF 122.9 Ⓛ
------------------------	---	-----------------------	-------------------------------



NC-1, 17 JUN 2021 to 15 JUL 2021

NC-1, 17 JUN 2021 to 15 JUL 2021



WAAS CH 53538 W33A	APP CRS 328°	Rwy ldg TDZE Apt Elev	3999 1067 1067
--	------------------------	-----------------------------	---

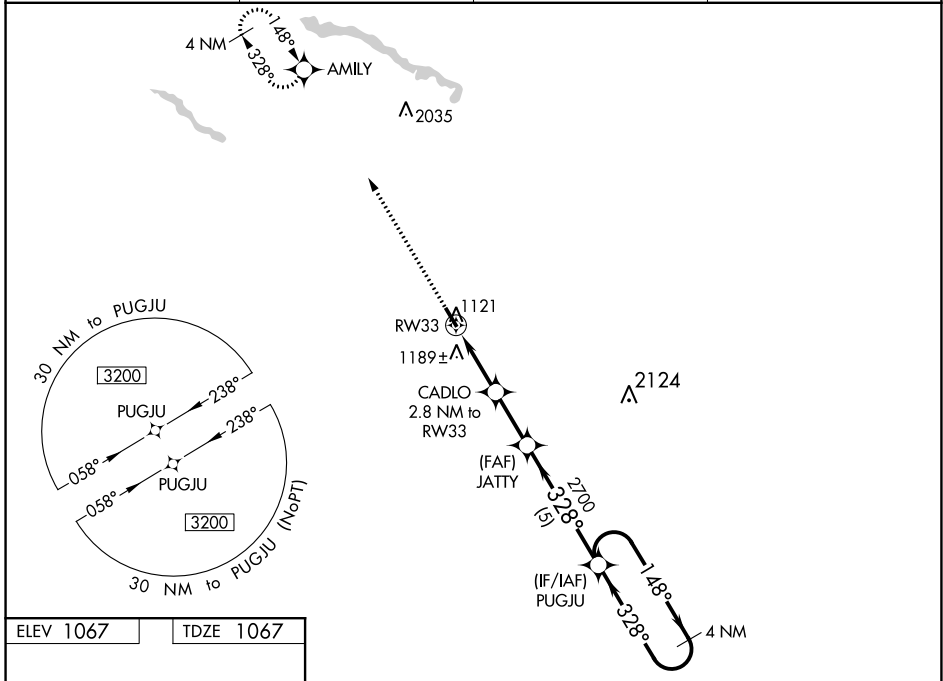
RNAV (GPS) RWY 33

ST JAMES MUNI (JYG)

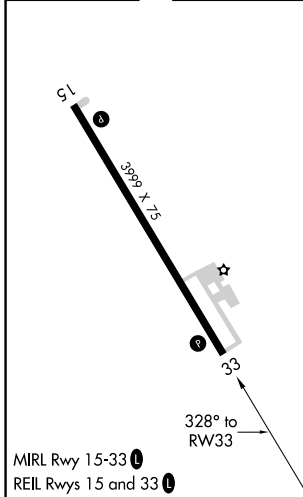
⚠ For uncompensated Baro-VNAV systems, procedure NA below -17°C (2°F) or above 54°C (130°F). DME/DME RNP-0.3 NA. Helicopter visibility reduction below 3/4 SM NA. Baro-VNAV and VDP NA when using New Ulm altimeter setting. When local altimeter setting not received, use New Ulm, MN altimeter setting and increase LPV DA to 1398 feet, LNAV/VNAV DA to 1549 feet, and all MDA 60 feet.

MISSED APPROACH: Climb to 3200 direct AMILY and hold.

AWOS-3 123.7	MINNEAPOLIS CENTER 127.75 257.7	GCO 121.725	CTAF 122.9 Ⓛ
------------------------	---	-----------------------	-------------------------------



ELEV 1067	TDZE 1067
-----------	-----------



3200 AMILY	VGSi and descent angles not coincident (VGSi Angle 2.83/TCH 40).		PUGJU	4 NM Holding Pattern
* LNAV only	CADLO 2.8 NM to RW33	JATTY 2700	328°	148°
	* 1.1 NM to RW33	1980*	2700	3200
	1.1 NM	1.7 NM	2.2 NM	5 NM
CATEGORY	A	B	C	D
LPV DA	1343-1	276 (300-1)		NA
LNAV/VNAV DA	1494-1½	427 (500-1½)		NA
LNAV MDA	1440-1	373 (400-1)		NA
C CIRCLING	1500-1 433 (500-1)	1520-1 453 (500-1)		NA

NC-1, 17 JUN 2021 to 15 JUL 2021

NC-1, 17 JUN 2021 to 15 JUL 2021