

LOC I-YA <b>110.95</b>	APP CRS <b>157°</b>	Rwy Idg TDZE Apt Elev	<b>5000</b> <b>16</b> <b>16</b>
---------------------------	------------------------	-----------------------------	---------------------------------------

# LOC RWY 16

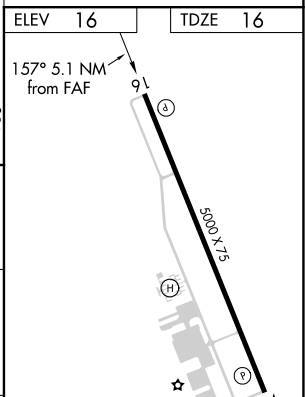
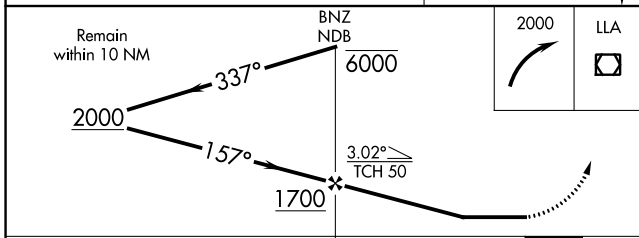
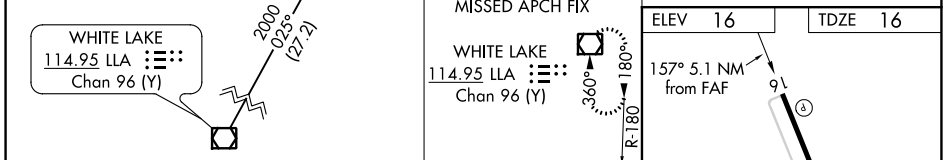
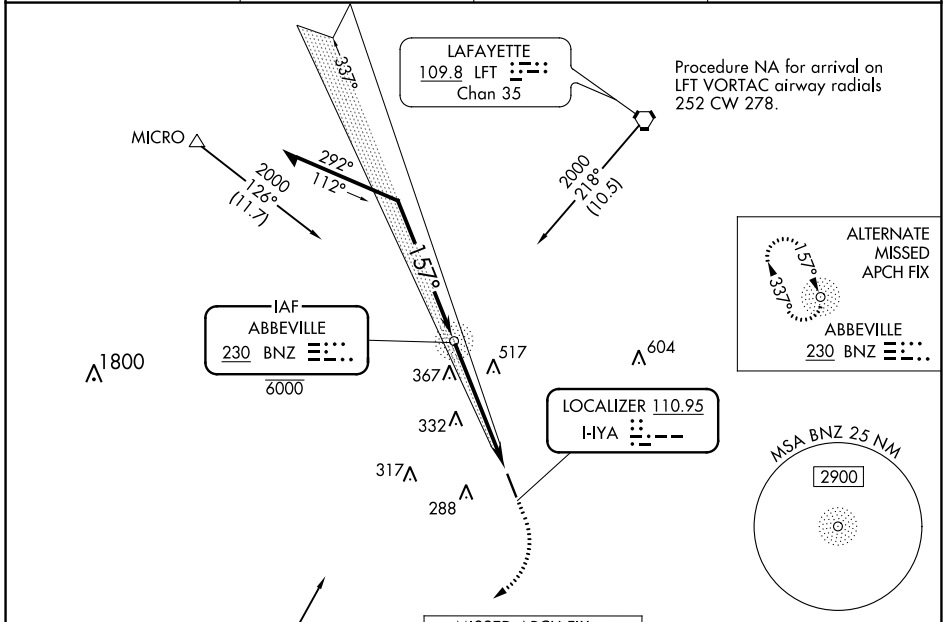
ABBEVILLE CHRIS CRUSTA MEML (IYA)

ADF required.

**NA** Rwy 16 helicopter visibility reduction below 3/4 SM NA. When local altimeter setting not received, use New Iberia altimeter setting and increase all MDA 40 feet and increase S-16 Cat C visibility 1/4 SM.

MISSED APPROACH: Climbing right turn to 2000 direct LLA VOR/DME and hold.

AWOS-3 <b>118.875</b>	LAFAYETTE APP CON ★ <b>121.1 268.7</b>	GCO <b>135.075</b>	UNICOM <b>122.8 (CTAF) 0</b>
--------------------------	---	-----------------------	---------------------------------



CATEGORY	A	B	C	D
S-16	520-1	504 (600-1)	520-1 3/8 504 (600-1 3/8)	NA
CIRCLING	520-1 504 (600-1)	600-1 584 (600-1)	700-2 684 (700-1)	NA

MIRL Rwy 16-34  
REIL Rws 16 and 34

FAF to MAP 5.1 NM

Knots	60	90	120	150	180
Min:Sec	5:06	3:24	2:33	2:02	1:42

# LOC RWY 16

SC-4, 22 FEB 2024 to 21 MAR 2024

SC-4, 22 FEB 2024 to 21 MAR 2024

WAAS CH <b>78023</b> <b>W16A</b>	APP CRS <b>157°</b>	Rwy Idg TDZE Apt Elev	<b>5000</b> <b>16</b> <b>16</b>
--	------------------------	-----------------------------	---------------------------------------

# RNAV (GPS) RWY 16

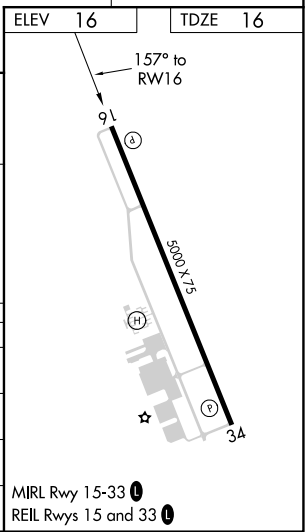
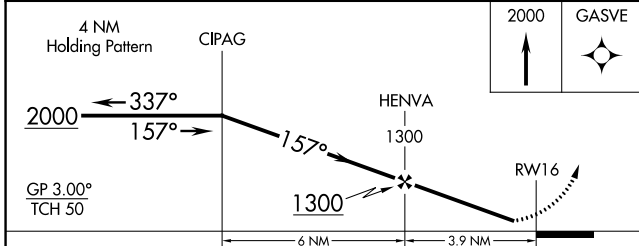
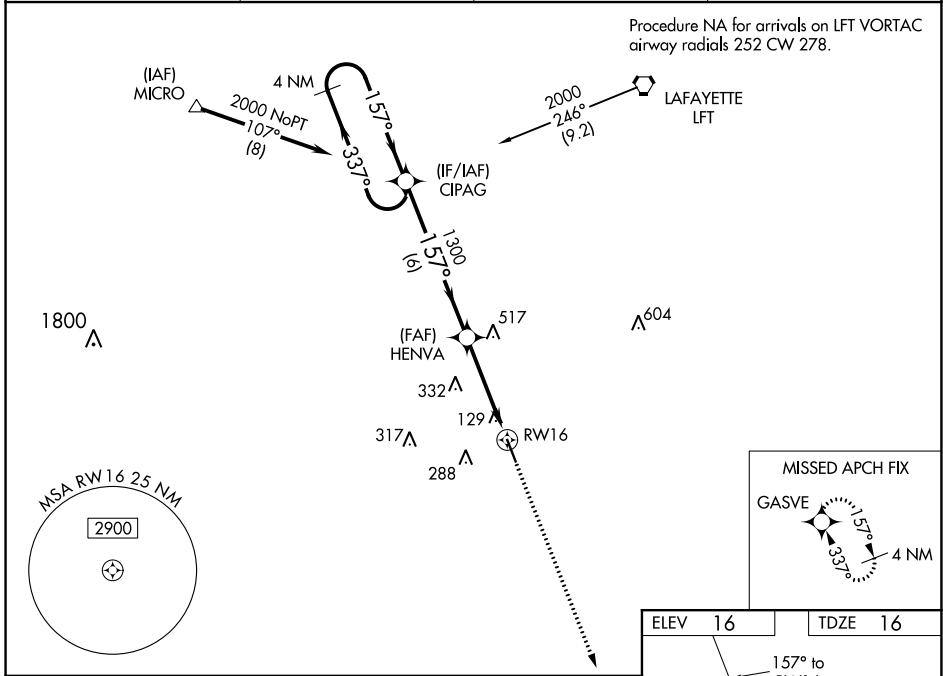
ABBEVILLE CHRIS CRUSTA MEML (IYA)

RNP APCH.

Baro-VNAV NA when using New Iberia altimeter setting. For uncompensated Baro-VNAV systems, LNAV/VNAV NA below -15°C (5°F) or above 54°C (130°F). Helicopter visibility reduction below 3/4 SM NA. When local altimeter setting not received, use New Iberia altimeter setting and increase all DA 27 feet and all MDA 40 feet.

MISSED APPROACH:  
Climb to 2000 direct GASVE and hold.

AWOS-3 <b>118.875</b>	LAFAYETTE APP CON ★ <b>121.1 268.7</b>	GCO <b>135.075</b>	UNICOM <b>122.8 (CTAF)</b>
--------------------------	---	-----------------------	-------------------------------



CATEGORY	A	B	C	D
LPV DA	266-1	250 (300-1)		NA
LNAV/VNAV DA	279-1	263 (300-1)		NA
LNAV MDA	380-1	364 (400-1)		NA
CIRCLING	520-1 504 (600-1)	600-1 584 (600-1)	700-2 684 (700-2)	NA

SC-4, 22 FEB 2024 to 21 MAR 2024

SC-4, 22 FEB 2024 to 21 MAR 2024

WAAS CH <b>45823</b> <b>W34A</b>	APP CRS <b>337°</b>	Rwy Idg TDZE Apt Elev	<b>5000</b> <b>15</b> <b>16</b>
--	------------------------	-----------------------------	---------------------------------------

# RNAV (GPS) RWY 34

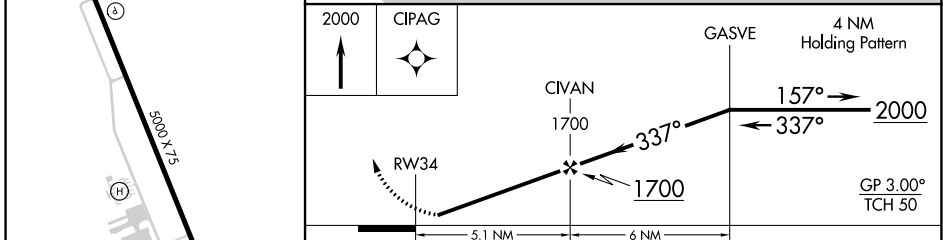
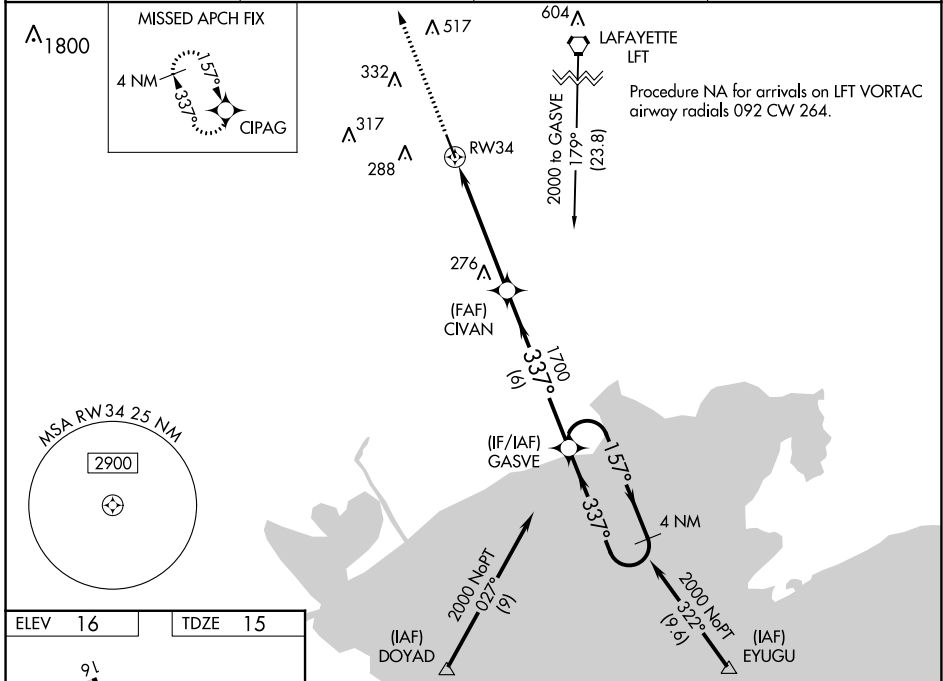
ABBEVILLE CHRIS CRUSTA MEML (IYA)

RNP APCH.

**⚠** Baro-VNAV NA when using New Iberia altimeter setting. For uncompensated Baro-VNAV systems, LNAV/VNAV NA below -15°C (5°F) or above 54°C (130°F). Helicopter visibility reduction below ¾ SM NA. When local altimeter setting not received, use New Iberia altimeter setting and increase all DA 27 feet and all MDA 40 feet; increase LNAV/VNAV all Cats visibility 1/8 SM.

**⚠** MISSED APPROACH: Climb to 2000 direct CIPAG and hold.

AWOS-3 <b>118.875</b>	LAFAYETTE APP CON ★ <b>121.1 268.7</b>	GCO <b>135.075</b>	UNICOM <b>122.8 (CTAF)</b>
--------------------------	---	-----------------------	-------------------------------



CATEGORY	A	B	C	D
LPV DA	298-1	283 (300-1)		NA
LNAV/VNAV DA	320-1	305 (400-1)		NA
LNAV MDA	580-1	565 (600-1)	580-1½ 565 (600-1½)	NA
<b>C</b> CIRCLING	580-1 564 (600-1)	600-1 584 (600-1)	700-2 684 (700-2)	NA

SC-4, 22 FEB 2024 to 21 MAR 2024

SC-4, 22 FEB 2024 to 21 MAR 2024

VORTAC LFT <b>109.8</b> Chan <b>35</b>	APP CRS <b>017°</b>	Rwy Idg TDZE Apt Elev <b>N/A</b> <b>N/A</b> <b>16</b>
--	------------------------	--

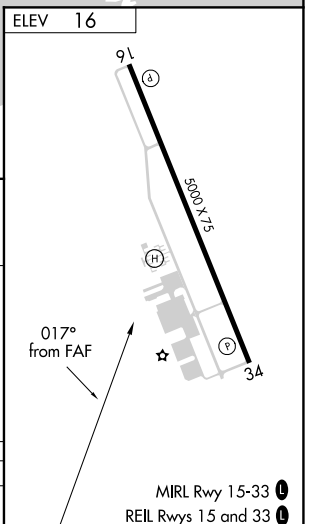
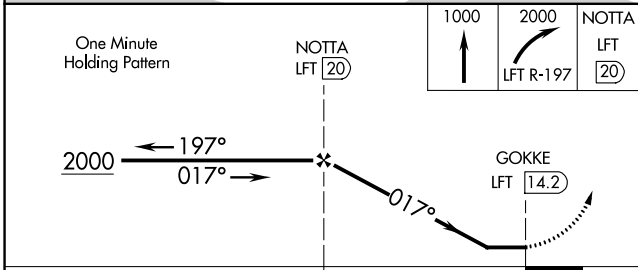
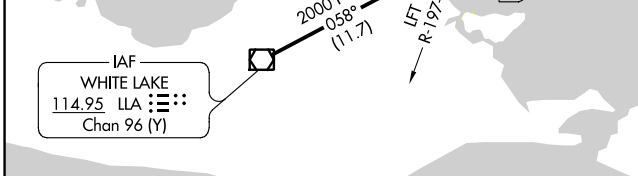
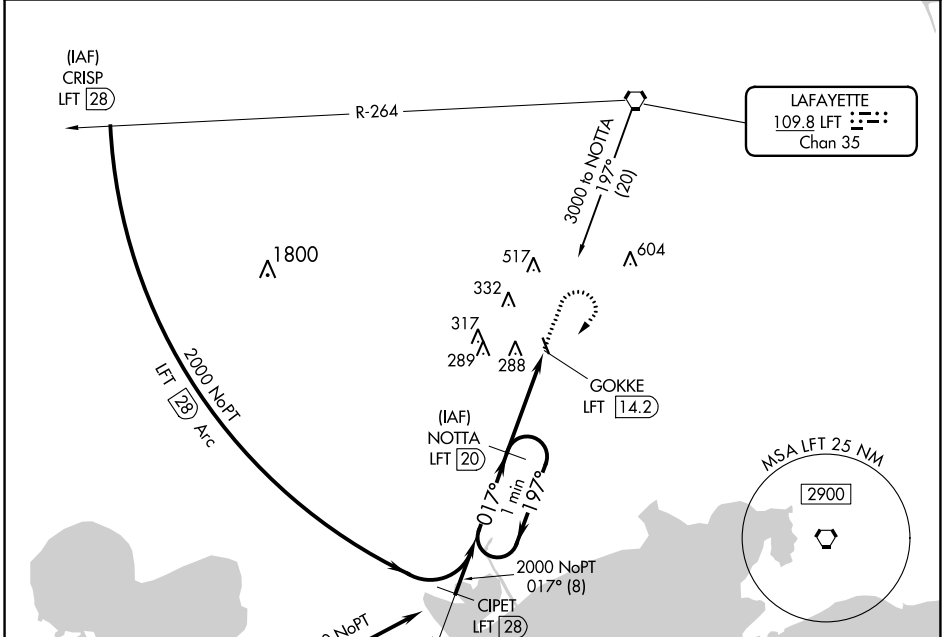
# VOR/DME-B

ABBEVILLE CHRIS CRUSTA MEML (IYA)

**NA** When local altimeter setting not received, use New Iberia altimeter setting and increase all MDA 40 feet.

**MISSED APPROACH:** Climb to 1000, then climbing right turn to 2000 via LFT R-197 to NOTTA/LFT 20 DME and hold.

AWOS-3 <b>118.875</b>	LAFAYETTE APP CON * <b>121.1 268.7</b>	GCO <b>135.075</b>	UNICOM <b>122.8</b> (CTAF) <b>0</b>
--------------------------	---	-----------------------	--



CATEGORY	A	B	C	D
<b>CIRCLING</b>	600-1	584 (600-1)	700-2 684 (700-2)	NA

SC-4, 22 FEB 2024 to 21 MAR 2024

SC-4, 22 FEB 2024 to 21 MAR 2024