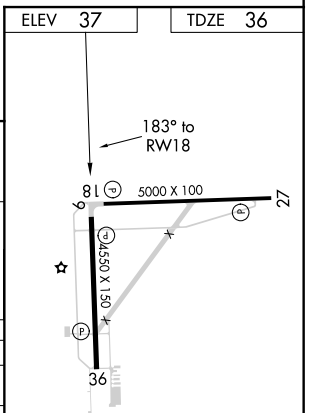
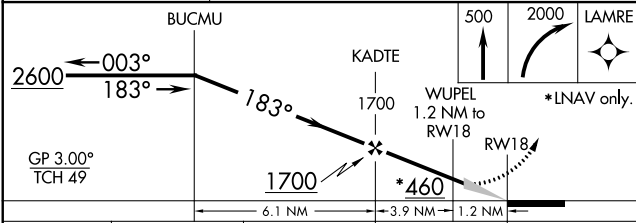
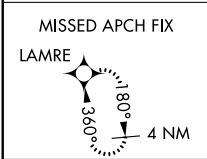
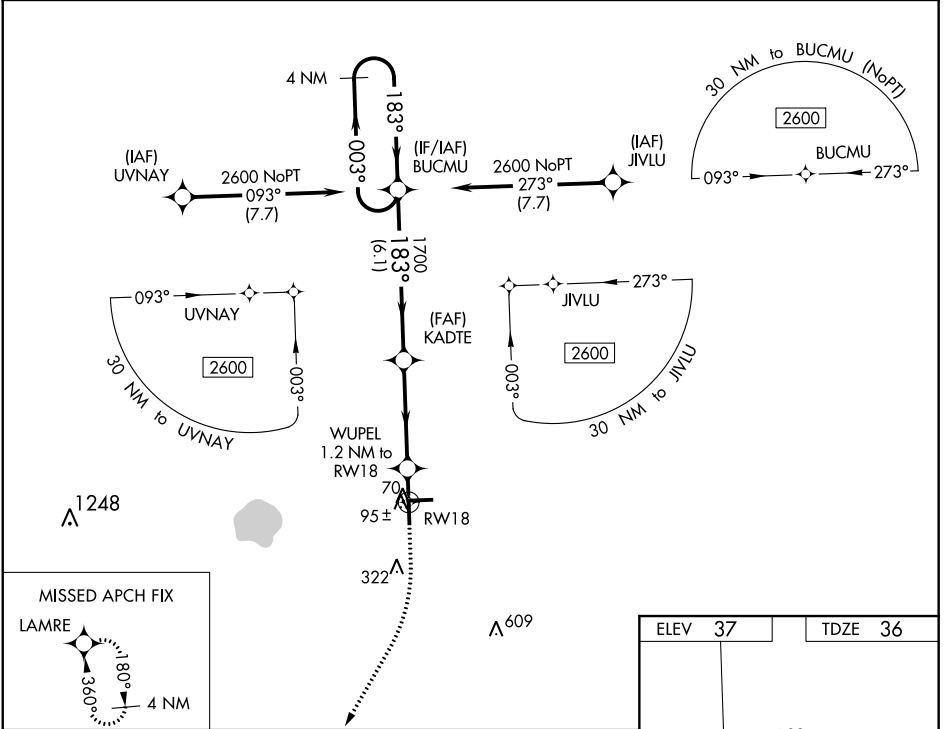


WAAS CH 63213 W18A	APP CRS 183°	Rwy Idg 4550 TDZE 36 Apt Elev 37
--	------------------------	---

RNAV (GPS) RWY 18

IMMOKALEE RGNL (IMM)

RNP APCH.		MISSED APPROACH: Climb to 500 then climbing right turn to 2000 direct LAMRE and hold.
For uncompensated Baro-VNAV systems, LNAV/VNAV NA below 0°C (32°F) or above 54°C (130°F).		
AWOS-3 118.525	FORT MYERS APP CON ★ 124.125 371.85	CTAF 122.9



GP 3.00° TCH 49	6.1 NM	3.9 NM	1.2 NM	
CATEGORY	A	B	C	D
LPV DA		286-1	250 (300-1)	
LNAV/VNAV DA		286-1	250 (300-1)	
LNAV MDA		360-1	324 (400-1)	
CIRCLING	500-1 463 (500-1)	640-1 603 (700-1)	640-1 ¼ 603 (700-1¼)	680-2 643 (700-2)

SE-3, 07 OCT 2021 to 04 NOV 2021

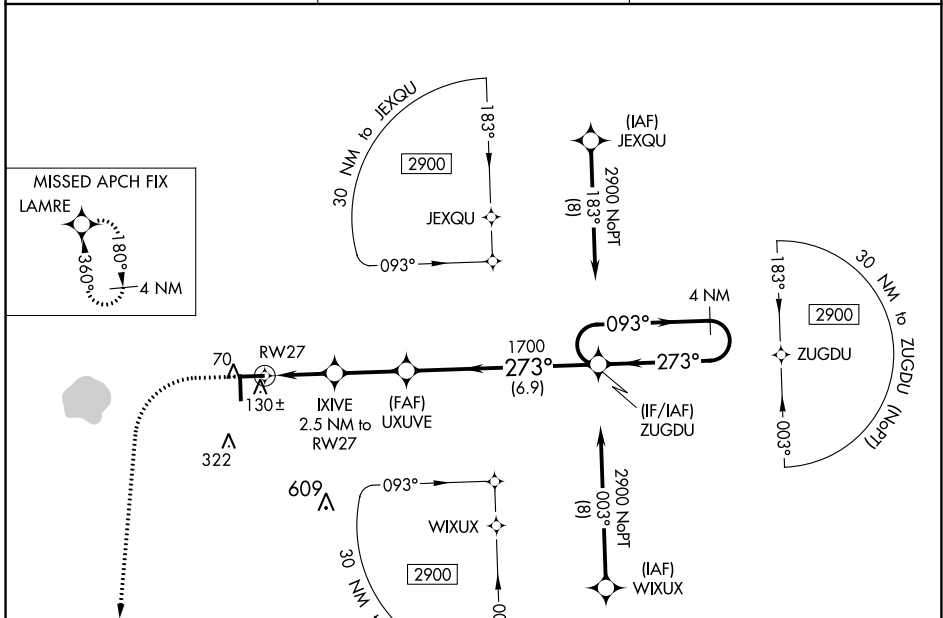
SE-3, 07 OCT 2021 to 04 NOV 2021

WAAS CH 69613 W 27A	APP CRS 273°	Rwy Idg 5000 TDZE 35 Apt Elev 37
---	------------------------	---

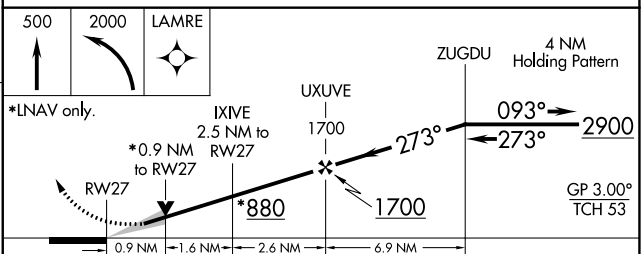
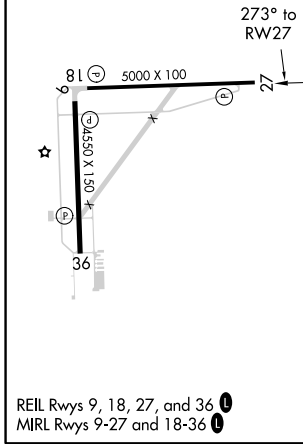
RNAV (GPS) RWY 27

IMMOKALEE RGNL (IMM)

RNP APCH.		MISSED APPROACH: Climb to 500 then climbing left turn to 2000 direct LAMRE and hold.
For uncompensated Baro-VNAV systems, LNAV/VNAV NA below 0°C (32°F) or above 54°C (130°F).		
AWOS-3 118.525	FORT MYERS APP CON ★ 124.125 371.85	CTAF 122.9 0



ELEV 37	TDZE 35
---------	---------



*LNAV only. *0.9 NM to RW27 *880 1700			
CATEGORY	A	B	C
LPV DA		285-1	250 (300-1)
LNAV/VNAV DA		311-1	276 (300-1)
LNAV MDA		380-1	345 (400-1)
CIRCLING	500-1 463 (500-1)	640-1 603 (700-1)	640-1 3/4 603 (700-1 3/4)
			680-2 643 (700-2)

SE-3, 07 OCT 2021 to 04 NOV 2021

SE-3, 07 OCT 2021 to 04 NOV 2021

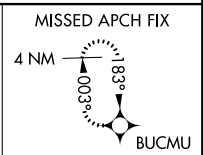
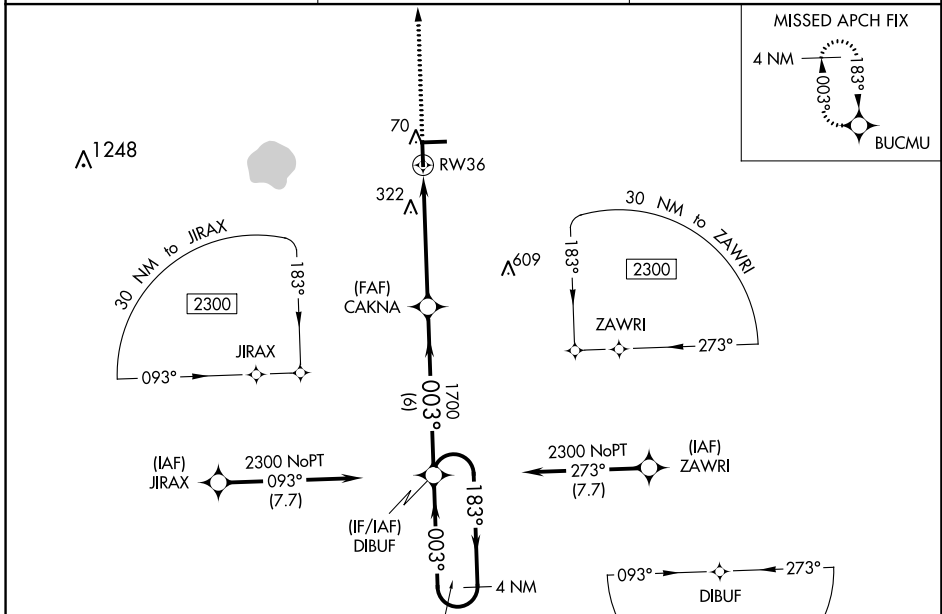
WAAS CH 73013 W36A	APP CRS 003°	Rwy Idg 4550 TDZE 34 Apt Elev 37
--	------------------------	---

RNAV (GPS) RWY 36

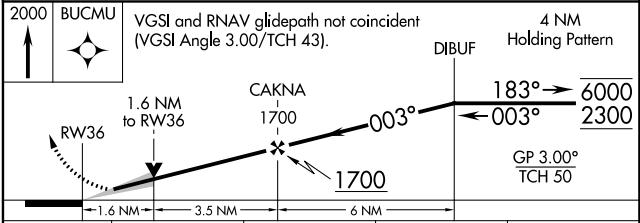
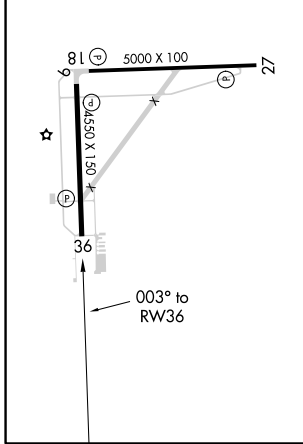
IMMOKALEE RGNL (IMIM)

RNP APCH-GPS. ▼ For uncompensated Baro-VNAV systems, LNAV/VNAV NA below 0°C or above 54°C.	MISSED APPROACH: Climb to 2000 direct BUCMU and hold.
---	---

AWOS-3 118.525	FORT MYERS APP CON ★ 124.125 371.85	CTAF 122.9
--------------------------	---	----------------------



ELEV 37	TDZE 34
REIL Rwy 9, 18, 27, and 36	
MIRL Rwy 9-27 and 18-36	



CATEGORY	A	B	C	D
LPV DA		284-1	250 (300-1)	
LNAV/VNAV DA		303-1	269 (300-1)	
LNAV MDA	580-1	546 (600-1)	580-1½	546 (600-1½)
CIRCLING	580-1 543 (600-1)	640-1 603 (700-1)	640-1¾ 603 (700-1¾)	680-2 643 (700-2)

SE-3, 07 OCT 2021 to 04 NOV 2021

SE-3, 07 OCT 2021 to 04 NOV 2021

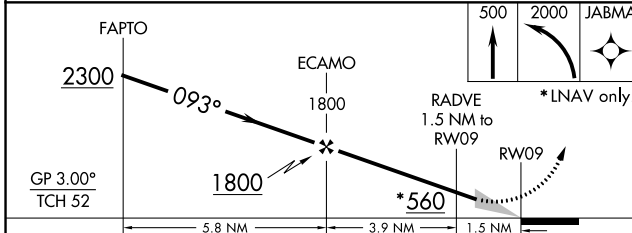
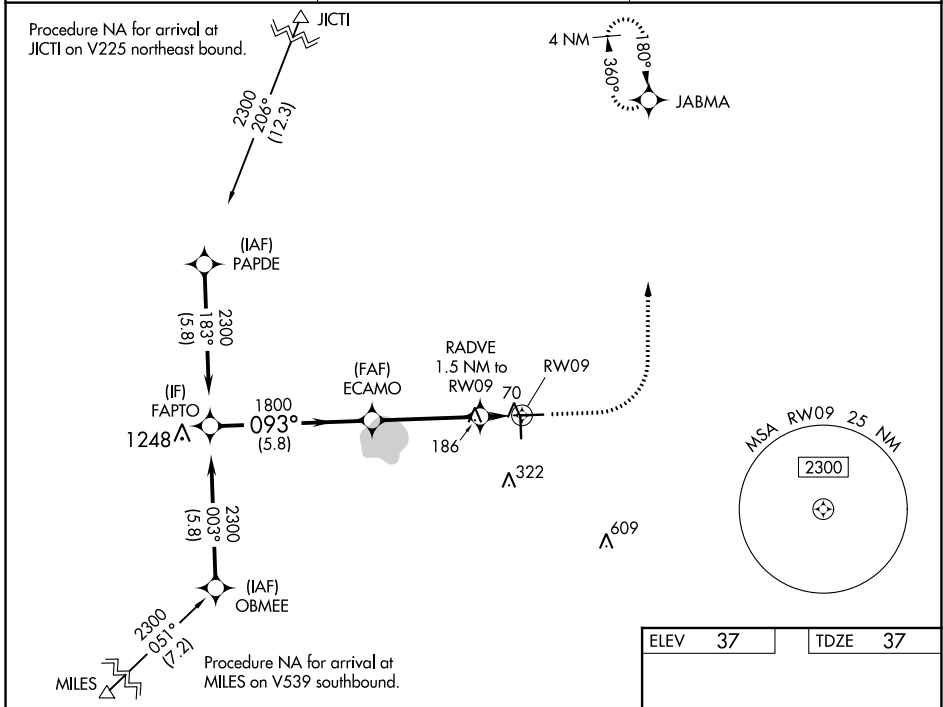
WAAS CH 99713 W09A	APP CRS 093°	Rwy Idg TDZE Apt Elev	5000 37 37
--	------------------------	-----------------------------	---------------------------------------

RNAV (GPS) RWY 9

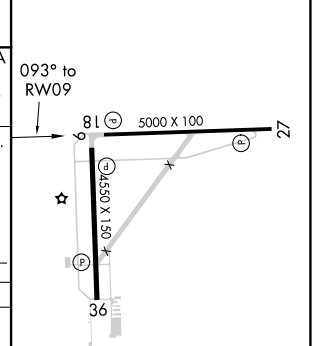
IMMOKALEE RGNL (IMM)

RNP APCH. ▼ For uncompensated Baro-VNAV systems, LNAV/VNAV NA below 0°C (32°F) or above 54°C (130°F).	MISSED APPROACH: Climb to 500 then climbing left turn to 2000 direct JABMA and hold.
--	--

AWOS-3 118.525	FORT MYERS APP CON ★ 124.125 371.85	CTAF 122.9 0
--------------------------	---	------------------------



ELEV 37	TDZE 37
---------	---------



CATEGORY	A	B	C	D
LPV DA		287-1	250 (300-1)	
LNAV/VNAV DA		287-1	250 (300-1)	
LNAV MDA	440-1	403 (500-1)	440-1½	403 (500-1½)
CIRCLING	500-1 463 (500-1)	640-1 603 (700-1)	640-1¾ 603 (700-1¾)	680-2 643 (700-2)

REIL Rwy's 9, 18, 27, and 36
MIRL Rwy's 9-27 and 18-36

SE-3, 07 OCT 2021 to 04 NOV 2021

SE-3, 07 OCT 2021 to 04 NOV 2021