

WAAS CH 82624 W16A	APP CRS 164°	Rwy Idg TDZE Apt Elev	8500 646 707
--	------------------------	-----------------------------	---

RNAV (GPS) RWY 16

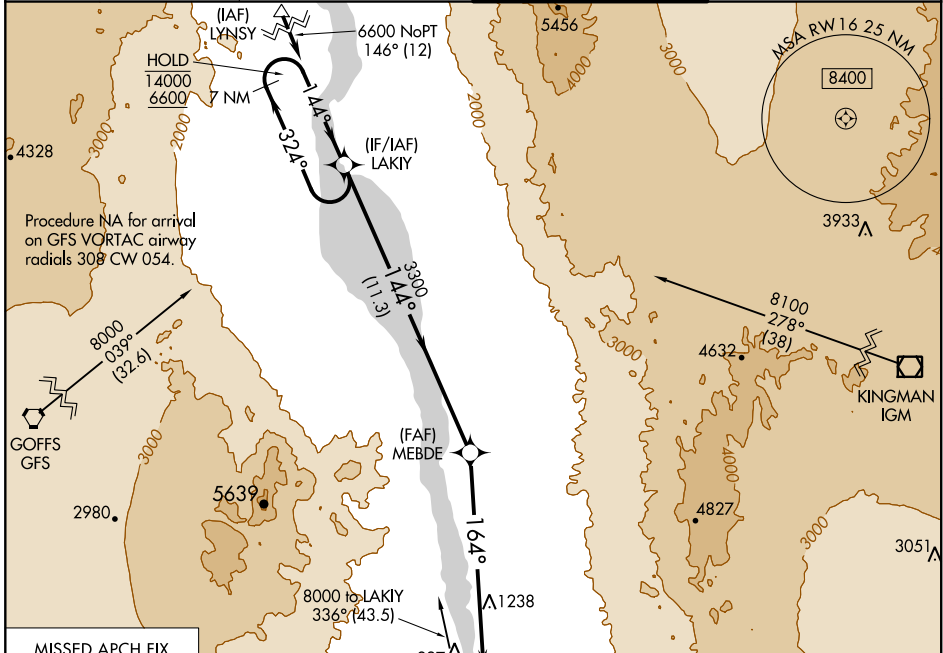
LAUGHLIN/BULLHEAD INTL (IFP)

RNP APCH.

Procedure NA at night.
Rwy 16 helicopter visibility reduction below 3/4 SM NA.

MISSED APPROACH: Climb to 6300 direct CALRA and hold, continue climb-in-hold to 6300.

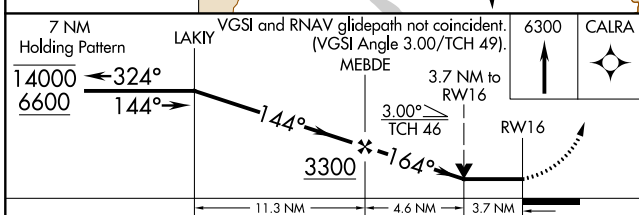
ATIS ★ 119.825	LOS ANGELES CENTER 134.65 360.65	BULLHEAD TOWER ★ 123.9 (CTAF) 0	GND CON 118.25
--------------------------	--	---	--------------------------



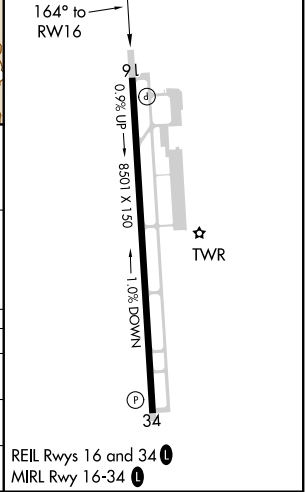
MISSED APCH FIX

Procedure NA for arrival on CALRA VORTAC airway radials 308 CW 054.

Procedure NA for arrival on EED VORTAC airway radials 257 CW 026.



ELEV 707	D	TDZE 646
----------	---	----------



CATEGORY	A	B	C	D
LP MDA	1860-1 1/4 1214 (1200-1 1/4)	1860-1 1/2 1214 (1200-1 1/2)	1860-3	1214 (1200-3)
LNAV MDA	1860-1 1/4 1214 (1200-1 1/4)	1860-1 1/2 1214 (1200-1 1/2)	1860-3	1214 (1200-3)
CIRCLING	1860-1 1/4 1153 (1200-1 1/4)	1860-1 1/2 1153 (1200-1 1/2)	1860-3 1153 (1200-3)	2340-3 1633 (1700-3)

SW-4, 04 NOV 2021 to 02 DEC 2021

SW-4, 04 NOV 2021 to 02 DEC 2021

WAAS CH 82602 W34A	APP CRS 344°	Rwy Idg TDZE Apt Elev	8500 707 707
--	------------------------	-----------------------------	---

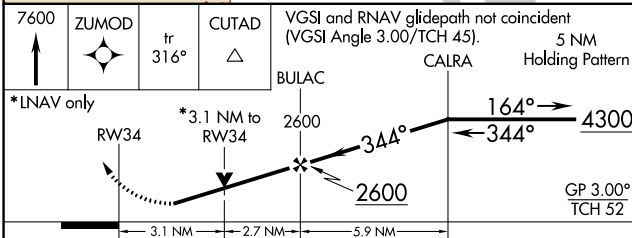
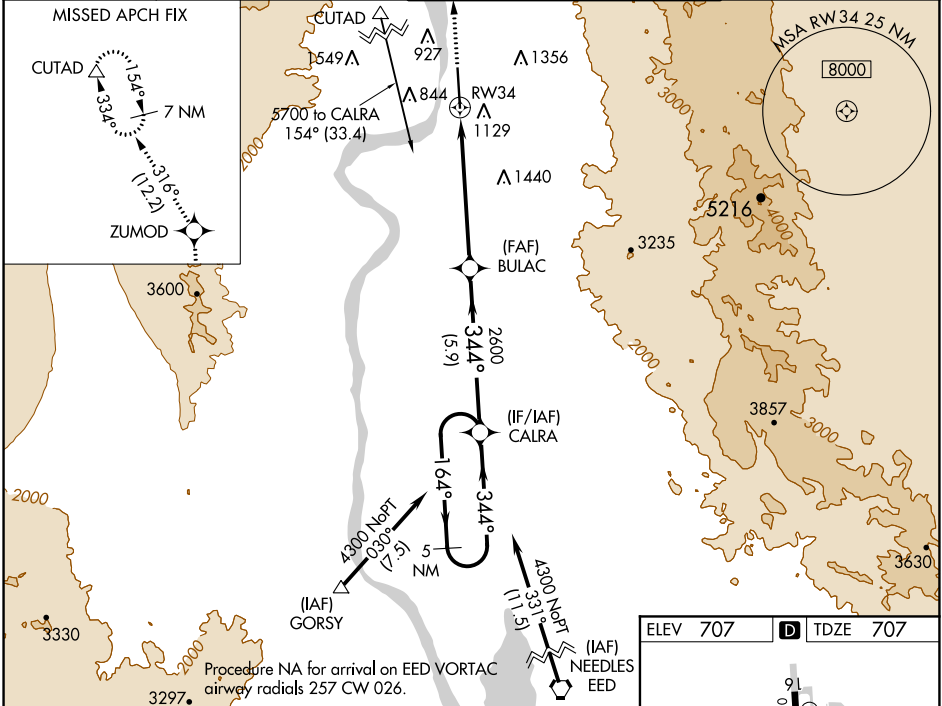
RNAV (GPS) RWY 34

LAUGHLIN/BULLHEAD INTL (IFP)

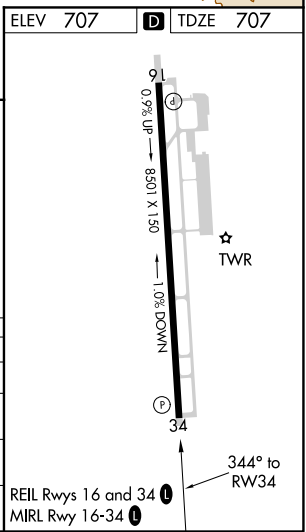
⚠ For uncompensated Boro-VNAV systems, LNAV/VNAV NA below -1.6°C (4°F) or above 54°C (130°F).
⚠ Rwy 34 helicopter visibility reduction below ¾ SM NA.
 DME/DME RNP-0.3 NA.
 Circling Rwy 16 NA at night.

MISSED APPROACH: Climb to 7600 direct ZUMOD and on track 316° to CUTAD and hold, continue climb-in-hold to 7600.

ATIS* 119.825	LOS ANGELES CENTER 134.65 360.65	BULLHEAD TOWER* 123.9 (CTAF) 0	GND CON 118.25
-------------------------	--	--	--------------------------



CATEGORY	A	B	C	D
LPV DA	1352-2½		645 (700-2½)	
LNAV/VNAV DA	1506-3		799 (800-3)	
LNAV MDA	1740-1¼ 1033 (1100-1¼)	1740-1½ 1033 (1100-1½)	1740-3	1033 (1100-3)
CIRCLING	1740-1¼ 1033 (1100-1¼)	1740-1½ 1033 (1100-1½)	1800-3 1093 (1100-3)	2340-3 1633 (1700-3)



SW-4, 04 NOV 2021 to 02 DEC 2021

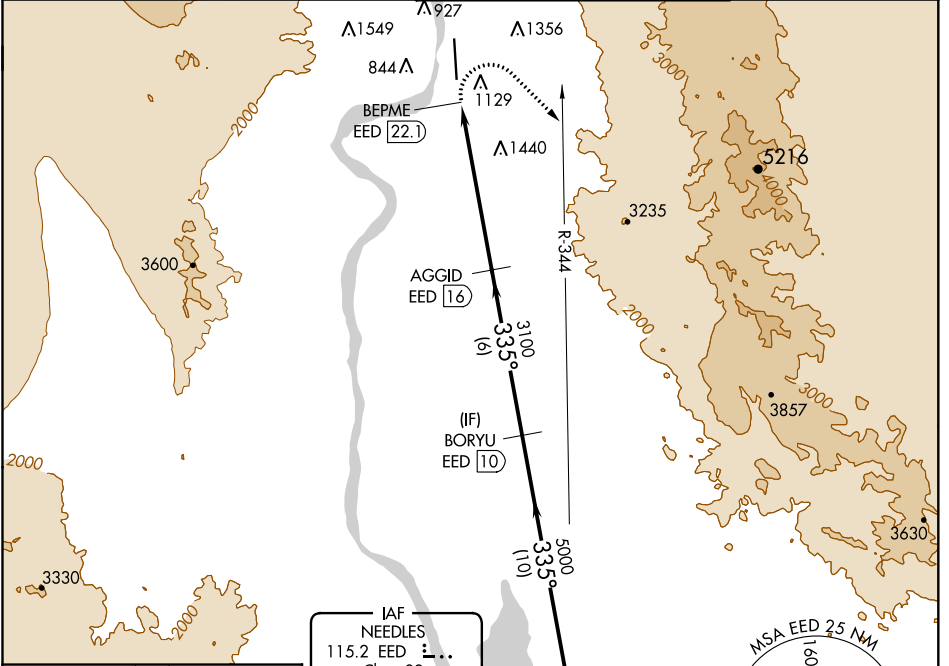
SW-4, 04 NOV 2021 to 02 DEC 2021

VORTAC EED 115.2 Chan 99	APP CRS 335°	Rwy Idg 8500 TDZE 707 Apt Elev 707
--	------------------------	---

VOR RWY 34
LAUGHLIN/BULLHEAD INTL (IFP)

⚠ Rwy 34 helicopter visibility reduction below ¼ SM NA. DME required. Circling Rwy 16 NA at night. MISSED APPROACH: Climbing right turn to 6000 on heading 120° and EED VORTAC R-344 and hold.

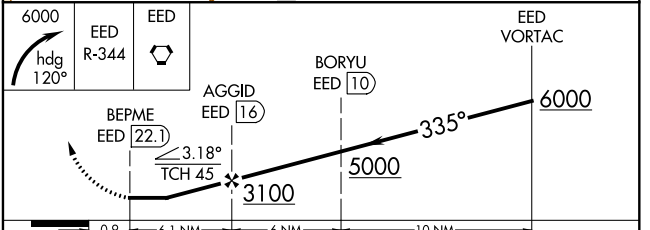
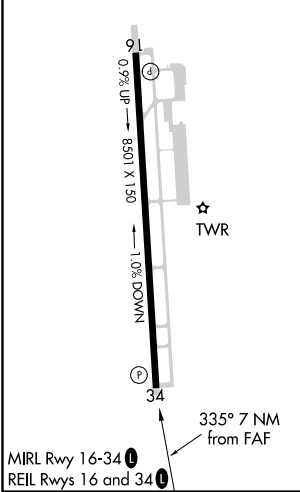
ATIS* 119.825	LOS ANGELES CENTER 134.65 360.65	BULLHEAD TOWER* 123.9 (CTAF)	GND CON 118.25
-------------------------	--	--	--------------------------



SW-4, 04 NOV 2021 to 02 DEC 2021

SW-4, 04 NOV 2021 to 02 DEC 2021

ELEV 707	D TDZE 707
----------	-------------------



6000	EED R-344	EED	EED VORTAC	
3100	BEPME EED 22.1	AGGID EED 16	BORYU EED 10	
5000	335°			
6000	6000			
0.9	6.1 NM	6 NM	10 NM	
CATEGORY	A	B	C	D
S-34	2840-1¼ 2133 (2200-1¼)	2840-1½ 2133 (2200-1½)	2840-3	2133 (2200-3)
C CIRCLING	2840-1¼ 2133 (2200-1¼)	2840-1½ 2133 (2200-1½)	2840-3	2133 (2200-3)