

WAAS CH 99419 W01A	APP CRS 014°	Rwy Idg TDZE 495 Apt Elev 497
---------------------------------	------------------------	---

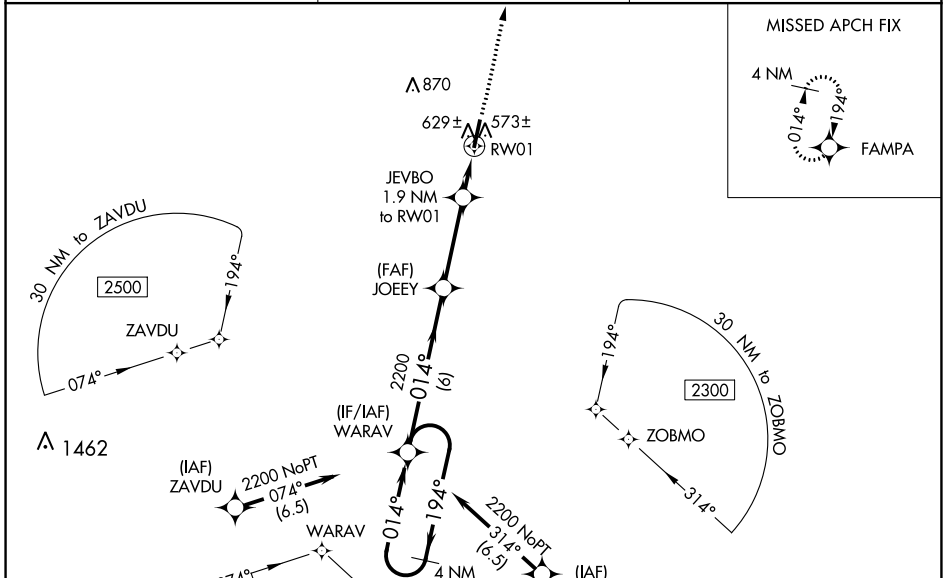
RNAV (GPS) RWY 1

CARROLL COUNTY (HZD)

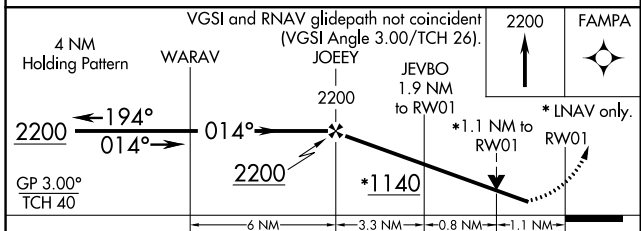
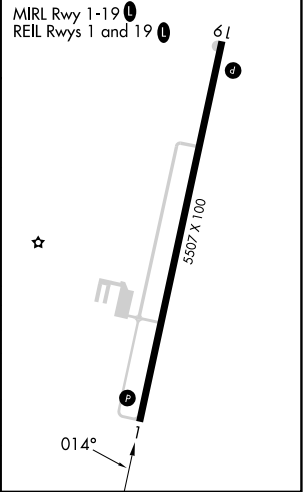
⚠ For uncompensated Baro-VNAV systems, LNAV/VNAV NA below -15°C (5°F) or above 54°C (130°F). DME/DME RNP-0.3 NA. When local altimeter setting not received, use Mc Kellar-Sipes Rgnl altimeter setting and increase all DA 94 feet and all MDA 100 feet; increase LPV all Cats visibility ¼ mile, LNAV/VNAV all Cats visibility ⅓ mile, LNAV Cats C and D visibility ½ mile, and Circling Cats C and D visibility ½ mile. VDP and Baro-VNAV NA with Mc Kellar-Sipes Rgnl altimeter setting. Helicopter visibility reduction below ¼ SM NA.

MISSED APPROACH: Climb to 2200 direct FAMP A and hold.

AWOS-3 133.275	MEMPHIS CENTER 134.65 316.15	UNICOM 122.8 (CTAF)
--------------------------	--	-------------------------------



ELEV 497	TDZE 495
----------	----------



CATEGORY	A	B	C	D
LPV DA		745-7/8	250 (300-7/8)	
LNAV/VNAV DA		810-1	315 (400-1)	
LNAV MDA	880-1	385 (400-1)	880-1 1/8	385 (400-1 1/8)
C CIRCLING	980-1	483 (500-1)	1220-2 723 (800-2)	1220-2 1/4 723 (800-2 1/4)

SE-1, 22 FEB 2024 to 21 MAR 2024

SE-1, 22 FEB 2024 to 21 MAR 2024

WAAS CH 97634 W19A	APP CRS 194°	Rwy Idg TDZE 497 Apt Elev 497	5507
--	------------------------	---	-------------

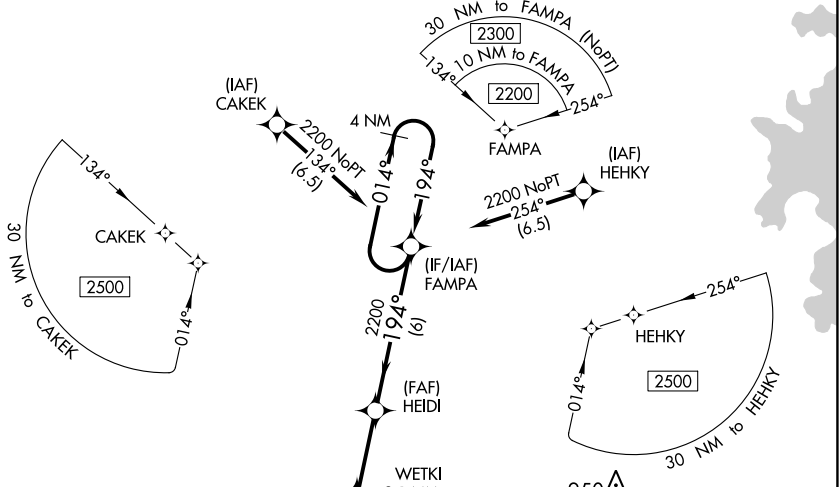
RNAV (GPS) RWY 19

CARROLL COUNTY (HZD)

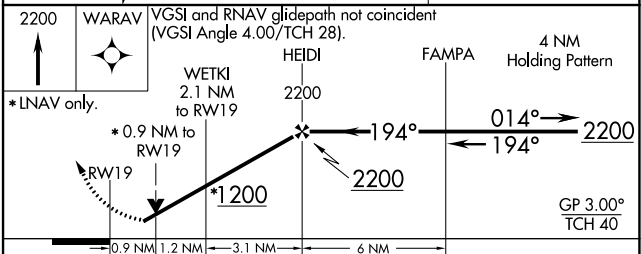
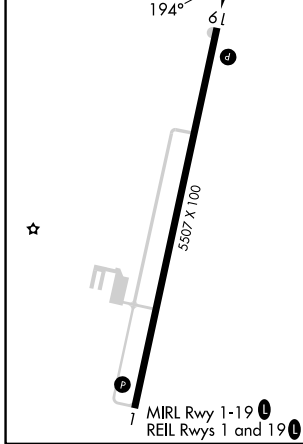
NA For uncompensated Baro-VNAV systems, LNAV/VNAV NA below -15°C (5°F) or above 54°C (130°F). DME/DME RNP-0.3 NA. When local altimeter setting not received, use Mc Kellar-Sipes Rgnl altimeter setting and increase all DA 94 feet and all MDA 100 feet; increase LPV all Cats and LNAV/VNAV all Cats visibility 3/8 mile, LNAV Cats C and D visibility 1/4 mile, and Circling Cats C and D visibility 1/2 mile. VDP and Baro-VNAV NA with Mc Kellar-Sipes Rgnl altimeter setting. Helicopter visibility reduction below 3/4 SM NA.

MISSED APPROACH:
Climb to 2200 direct
WARAV and hold.

AWOS-3 133.275	MEMPHIS CENTER 134.65 316.15	UNICOM 122.8 (CTAF)
--------------------------	--	-------------------------------



ELEV 497	TDZE 497
----------	----------



CATEGORY	A	B	C	D
LPV DA		798-1	301 (400-1)	
LNAV/VNAV DA		933-1½	436 (500-1½)	
LNAV MDA	920-1	423 (500-1)	920-1¼	423 (500-1¼)
C CIRCLING	980-1	483 (500-1)	1220-2 723 (800-2)	1220-2¼ 723 (800-2¼)

SE-1, 22 FEB 2024 to 21 MAR 2024

SE-1, 22 FEB 2024 to 21 MAR 2024