

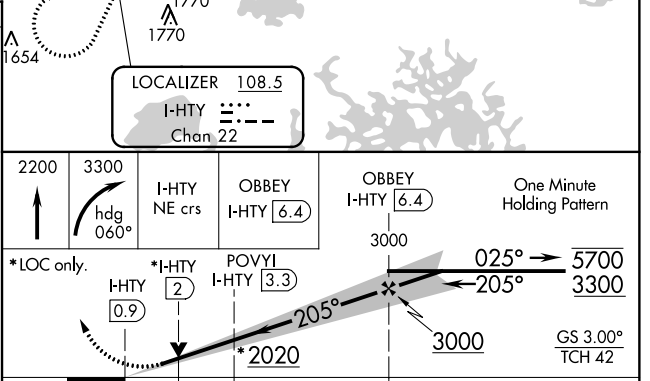
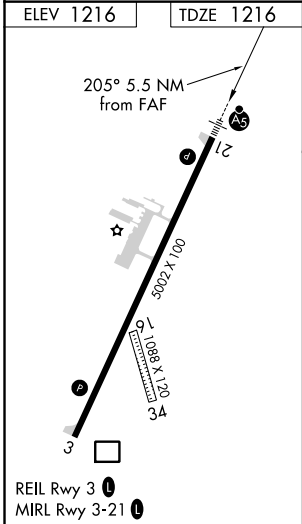
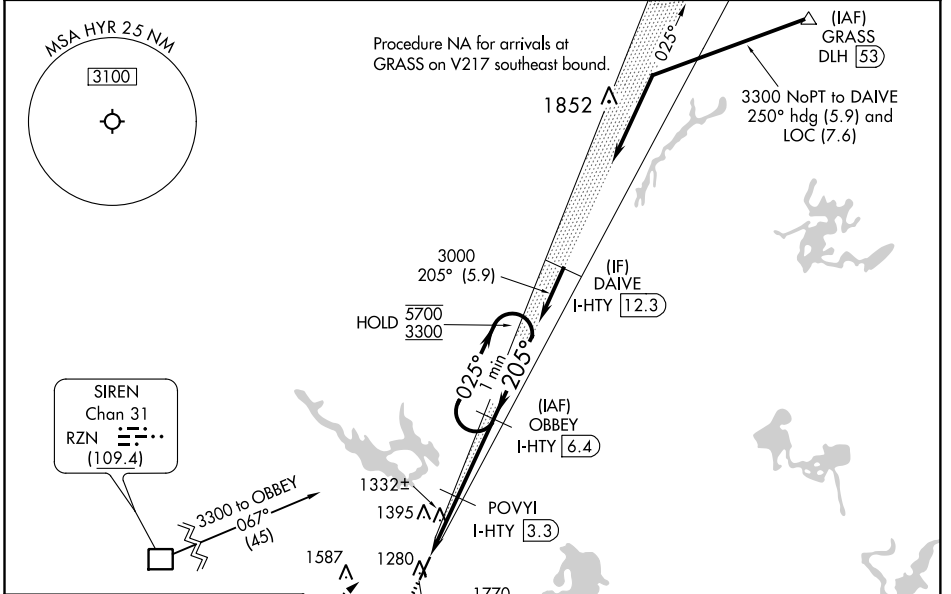
LOC/DME I-HTY <b>108.5</b> Chan <b>22</b>	APP CRS <b>205°</b>	Rwy ldg TDZE Apt Elev	<b>5002</b> <b>1216</b> <b>1216</b>
---	------------------------	-----------------------------	---

# ILS or LOC RWY 21

SAWYER COUNTY (HYR)

From RZN DME: RNAV 1-GPS required. DME required.	MALSR 	MISSED APPROACH: Climb to 2200 then climbing right turn to 3300 on heading 060° and I-HTY northeast course to OBBEY/I-HTY 6.4 DME and hold.
Circling NA to Rwy 16 and 34. Rwy 21 helicopter visibility reduction below 3/4 SM NA. For inop ALS, increase S-ILS 21 all Cts visibility to 7/8 SM, increase LOC Cat A/B visibility to 1 SM, Cat C/D to 1/8 SM.		

ASOS <b>118.4</b>	MINNEAPOLIS CENTER <b>126.45 276.4</b>	UNICOM <b>122.8</b> (CTAF)
----------------------	---	-------------------------------



CATEGORY	A	B	C	D
S-ILS 21		1518-3/4	302 (400-3/4)	
S-LOC 21		1600-3/4	384 (400-3/4)	
CIRCLING	1860-1 644 (700-1)	2060-1 1/4 844 (900-1 1/4)	2120-2 3/4 904 (1000-2 3/4)	2120-3 904 (1000-3)

EC-3, 27 JAN 2022 to 24 FEB 2022

EC-3, 27 JAN 2022 to 24 FEB 2022

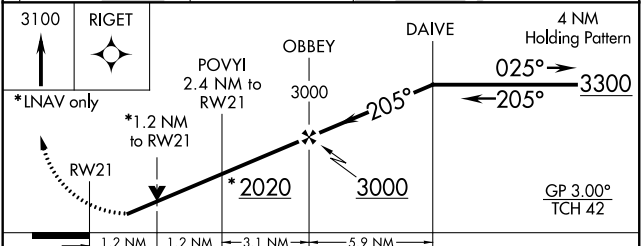
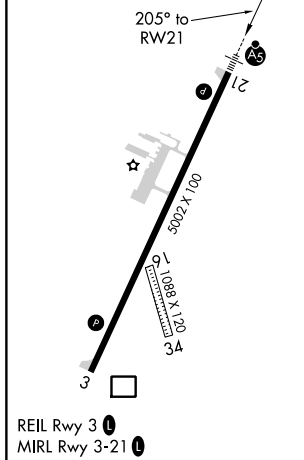
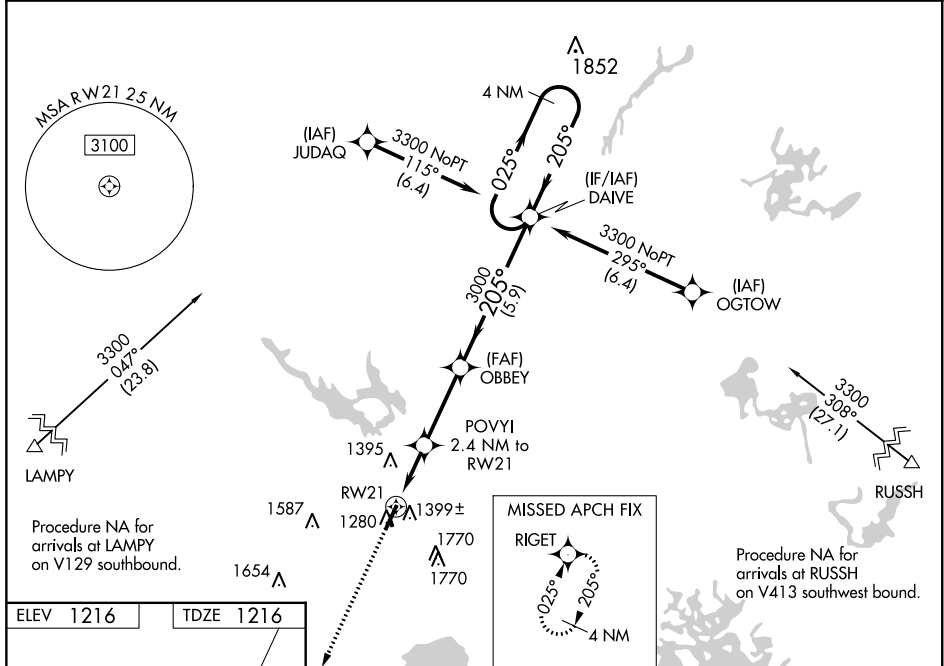
WAAS CH <b>49000</b> <b>W21A</b>	APP CRS <b>205°</b>	Rwy Idg TDZE Apt Elev	<b>5002</b> <b>1216</b> <b>1216</b>
--	------------------------	-----------------------------	---

# RNAV (GPS) RWY 21

SAWYER COUNTY (HYR)

RNP APCH.	<p>▼ For uncompensated Baro-VNAV systems, LNAV/VNAV NA below -22°C (-7°F) or above 54°C (130°F). For inop MALSR, increase LNAV/VNAV all Cats visibility to 1½ mile and LNAV Cat A and B visibility to 1 mile. Rwy 21 helicopter visibility reduction below ¾ SM NA. Circling NA to Rwys 16 and 34.</p>	MALSR AS	MISSED APPROACH: Climb to 3100 direct RIGET and hold.
-----------	--	-------------	--

ASOS <b>118.4</b>	MINNEAPOLIS CENTER <b>126.45 276.4</b>	UNICOM <b>122.8 (CTAF) 0</b>
----------------------	---	---------------------------------



CATEGORY	A	B	C	D
LPV DA		1518-¾	302 (400-¾)	
LNAV/VNAV DA		1560-¾	344 (400-¾)	
LNAV MDA		1640-¾	424 (500-¾)	
CIRCLING	1860-1 644 (700-1)	2060-1¼ 844 (900-1¼)	2120-2¾ 904 (1000-2¾)	2120-3 904 (1000-3)

EC-3, 27 JAN 2022 to 24 FEB 2022

EC-3, 27 JAN 2022 to 24 FEB 2022

WAAS CH <b>90400</b> <b>W03A</b>	APP CRS <b>025°</b>	Rwy Idg TDZE Apt Elev	<b>5002</b> <b>1214</b> <b>1216</b>
--	------------------------	-----------------------------	---

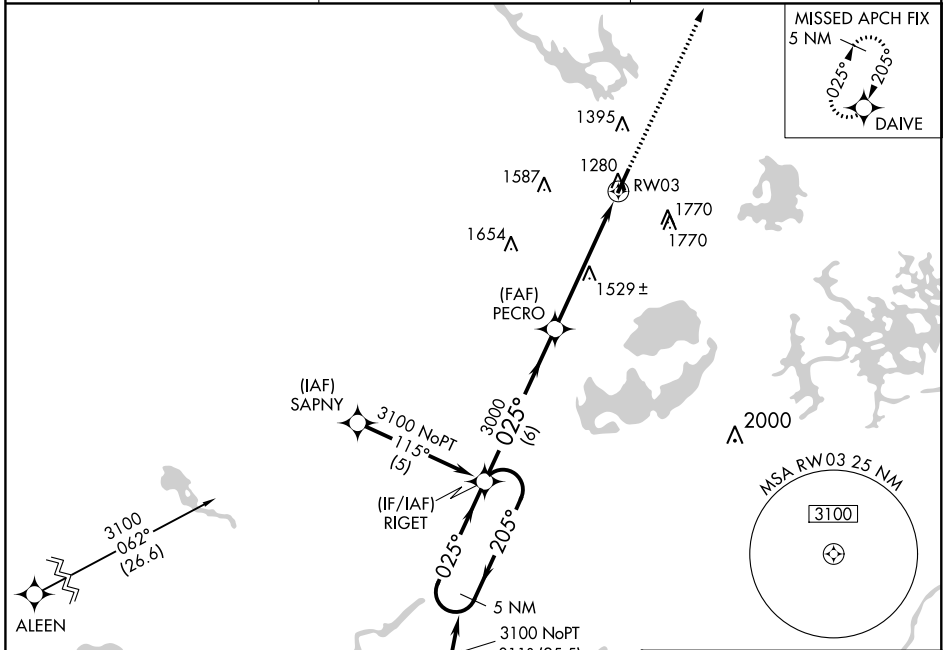
# RNAV (GPS) RWY 3

SAWYER COUNTY (HYR)

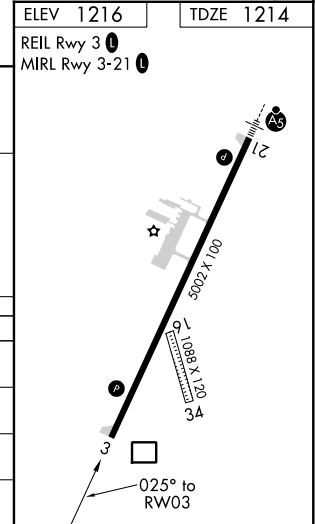
RNP APCH. **▽** For uncompensated Baro-VNAV systems, LNAV/VNAV NA below -22°C or above 54°C. **▲** Rwy 3 helicopter visibility reduction below ¾ SM NA. Circling NA to Rwy 16 and 34.

MISSED APPROACH: Climb to 3300 direct DAIVE and hold.

ASOS <b>118.4</b>	MINNEAPOLIS CENTER <b>126.45 276.4</b>	UNICOM <b>122.8 (CTAF) 0</b>
----------------------	---	---------------------------------



CATEGORY	A	B	C	D
LPV DA	1514-1 300 (300-1)			
LNAV/VNAV DA	1916-2½ 702 (700-2½)			
LNAV MDA	1780-1	566 (600-1)	1780-1½ 566 (600-1½)	1780-1¾ 566 (600-1¾)
<b>C</b> CIRCLING	1860-1 644 (700-1)	2060-1¼ 844 (900-1¼)	2120-2¾ 904 (1000-2¾)	2120-3 904 (1000-3)



EC-3, 27 JAN 2022 to 24 FEB 2022

EC-3, 27 JAN 2022 to 24 FEB 2022