

LOC/DME I-HWID 111.5 Chan 52	APP CRS 288°	Rwy Idg TDZE Apt Elev	5018 50 52
---	------------------------	-----------------------------	---------------------------------------

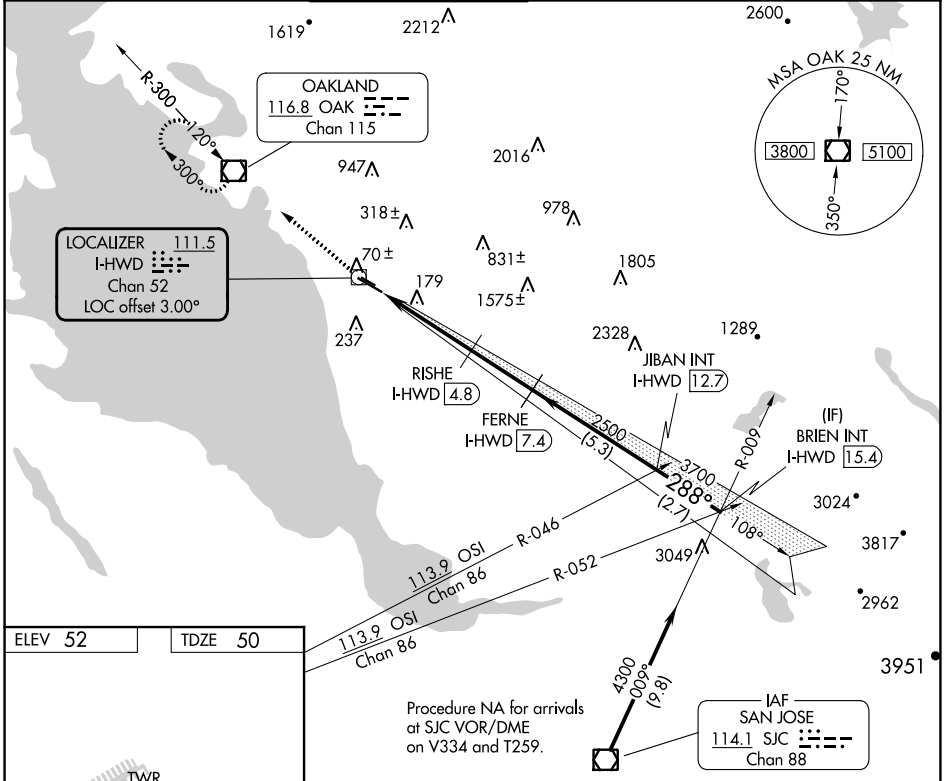
LOC/DME RWY 28L

HAYWARD EXEC (HWD)

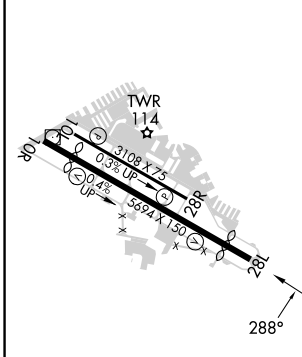
⚠ Circling NA north of Rwy 10L-28R. When local altimeter setting not received, use Oakland altimeter setting: increase all MDA 20 feet and Circling Cat D visibility ¼ SM. Rwy 28L helicopter visibility reduction below ¾ SM NA.

MISSED APPROACH: Climb to 2100 direct OAK VOR/DME and hold.

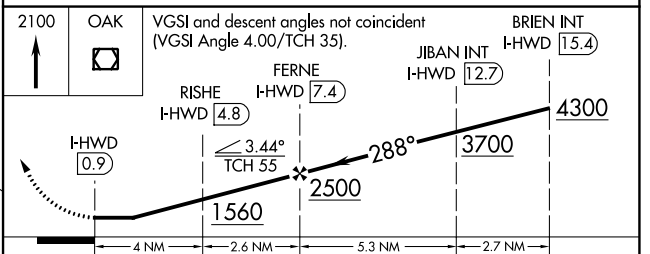
ATIS 126.7	NORCAL APP CON 124.4 351.8	HAYWARD TOWER * 120.2 (CTAF) 257.8	GND CON 121.4	CLNC DEL 128.05	UNICOM 122.95
----------------------	--------------------------------------	--	-------------------------	---------------------------	-------------------------



ELEV 52	TDZE 50
---------	---------



MIRL Rwy 10R-28L
MIRL Rwy 10L-28R
REIL Rwy 10R and 28L



CATEGORY	A	B	C	D
S-28L	500-1	450 (500-1)	500-1⅓	450 (500-1⅓)
CIRCLING	540-1	488 (500-1)	540-1½ 488 (500-1½)	920-2¾ 868 (900-2¾)

SW-2, 22 FEB 2024 to 21 MAR 2024

SW-2, 22 FEB 2024 to 21 MAR 2024

WAAS CH 40330 W28A	APP CRS 285°	Rwy Idg 5018 TDZE 50 Apr Elev 52
--	------------------------	---

RNAV (GPS) RWY 28L

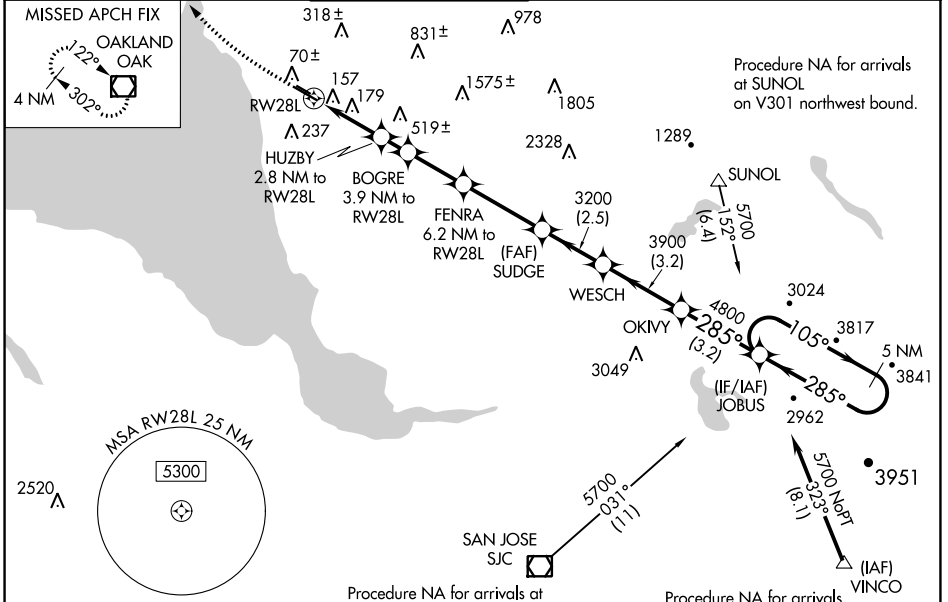
HAYWARD EXEC(HWD)

RNP APCH.

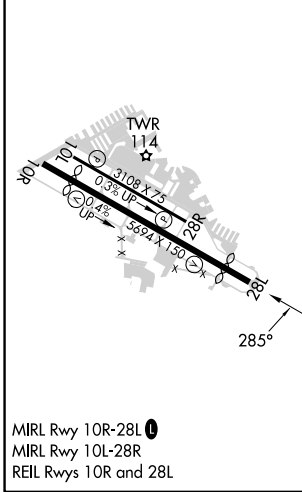
Baro-VNAV NA. When local altimeter setting not received, use Oakland altimeter setting: increase all DA/MDA 20 feet, and LNAV/VNAV all Cats and LNAV Cat C/D visibility 1/8 SM and Circling Cat D visibility 1/4 SM. Circling NA north of Rwy 10L-28R. Rwy 28L: Helicopter visibility reduction below 3/4 SM NA.

MISSED APPROACH: Climb to 600 then climbing right turn to 2100 direct OAK VOR/DME and hold.

ATIS 126.7	NORCAL APP CON 124.4 351.8	HAYWARD TOWER ★ 120.2 (CTAF) 0 257.8	GND CON 121.4	CLNC DEL 128.05	UNICOM 122.95
----------------------	--------------------------------------	--	-------------------------	---------------------------	-------------------------



ELEV 52	TDZE 50
---------	---------



600	2100	OAK	VGSI and RNAV glidepath not coincident (VGSI Angle 4.00/TCH 35).	OKIVY	JOBUS	5 NM
*LNAV only.		FENRA	SUDGE	WESCH	OKIVY	JOBUS
		6.2 NM to RW28L	3200			5 NM Holding Pattern
		BOGRE				
		3.9 NM to RW28L				
		HUZBY				
		2.8 NM to RW28L				
		RW28L				
		1000*	1360*	2120*	3200	
		2.8	1.1 NM	2.3 NM	3.3 NM	2.5 NM
						3.2 NM
						3.2 NM
						GP 3.10°
						TCH 35
CATEGORY		A	B	C	D	
LPV DA			348-1	298 (300-1)		
LNAV/VNAV DA			400-1½	350 (400-1½)		
LNAV MDA		460-1	410 (500-1)	460-1½	410 (500-1½)	
CIRCLING		540-1	488 (500-1)	540-1½	920-2¾	868 (900-2¾)

SW-2, 22 FEB 2024 to 21 MAR 2024

SW-2, 22 FEB 2024 to 21 MAR 2024