

WAAS CH 58133 W17A	APP CRS 177°	Rwy Idg 4020 TDZE 1176 Apt Elev 1176
--	------------------------	---

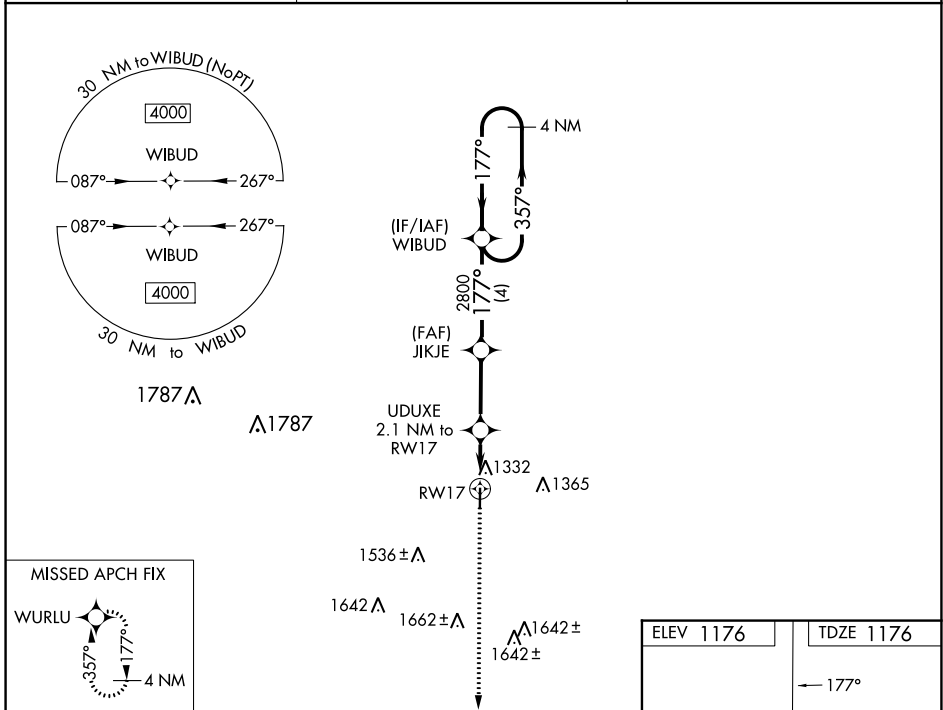
RNAV (GPS) RWY 17

HAMPTON MUNI (HPT)

▽ VDP and Baro-VNAV NA when using Mason City altimeter setting. For uncompensated Baro-VNAV systems, LNAV/VNAV NA below -17°C (2°F) or above 54°C (130°F).
△ NA DME/DME RNP: 0.3 NA. Helicopter visibility reduction below ¼ SM NA. When local altimeter setting not received, use Mason City altimeter setting and increase all DA 67 feet and all MDA 80 feet, and LNAV/VNAV all Cats visibility ¼ mile.

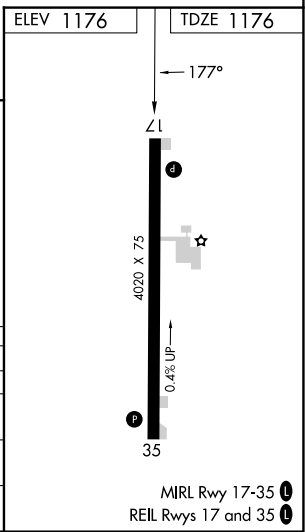
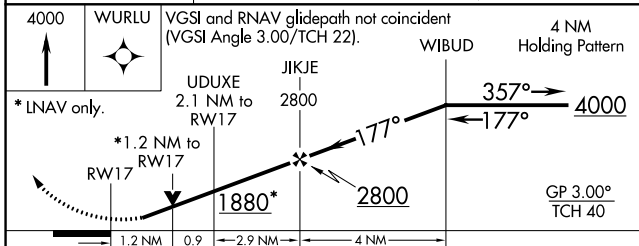
MISSED APPROACH: Climb to 4000 direct WURLU and hold, continue climb-in-hold to 4000.

AWOS-3 121.025	MINNEAPOLIS CENTER 134.0 288.3	UNICOM 122.7 (CTAF) 0
--------------------------	--	---------------------------------



NC-3, 22 FEB 2024 to 21 MAR 2024

NC-3, 22 FEB 2024 to 21 MAR 2024



CATEGORY	A	B	C	D
LPV DA	1426-1	250 (300-1)		NA
LNAV/VNAV DA	1605-1½	429 (500-1½)		NA
LNAV MDA	1600-1	424 (500-1)		NA
C CIRCLING	1640-1	464 (500-1)		NA

WAAS CH 77833 W35A	APP CRS 357°	Rwy Idg 4020 TDZE 1168 Apt Elev 1176
--	------------------------	---

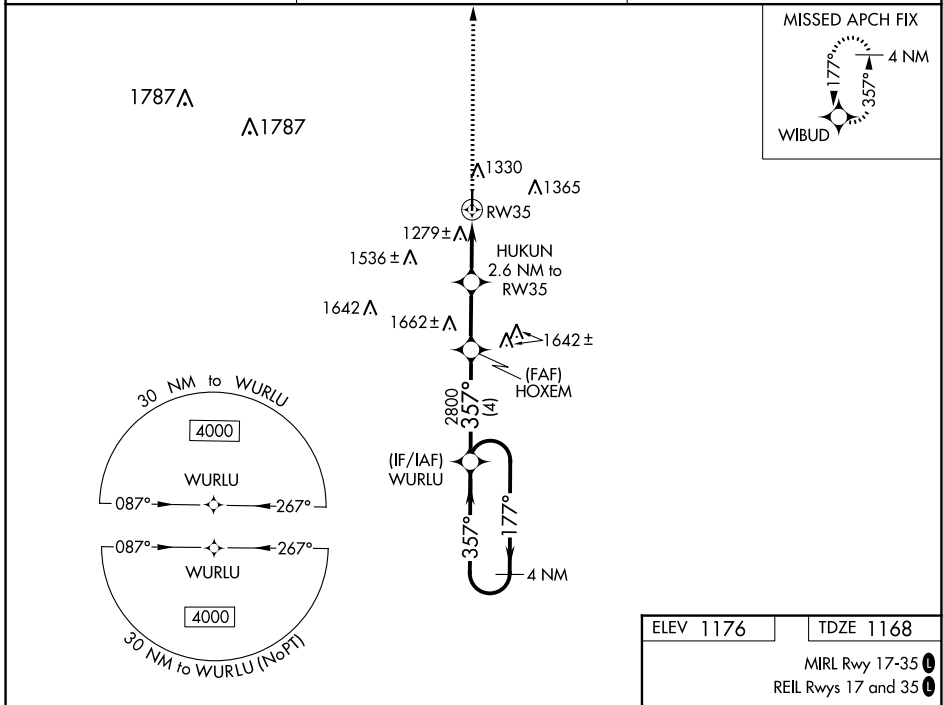
RNAV (GPS) RWY 35

HAMPTON MUNI (HPT)

▽ VDP and Baro-VNAV NA when using Mason City altimeter setting. For uncompensated Baro-VNAV systems, LNAV/VNAV NA below -17°C (2°F) or above 54°C (130°F).
△ NA DME/DME RNP-0.3 NA. Helicopter visibility reduction below ¼ SM NA. When local altimeter setting not received, use Mason City altimeter setting and increase all DA 67 feet and all MDA 80 feet, and LNAV/VNAV all Cats visibility ¼ mile.

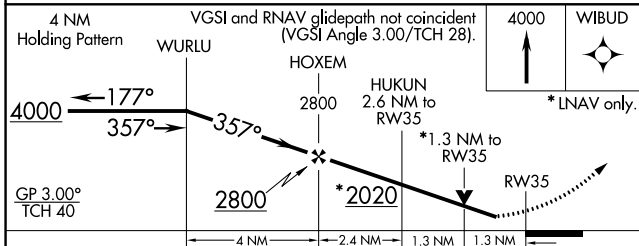
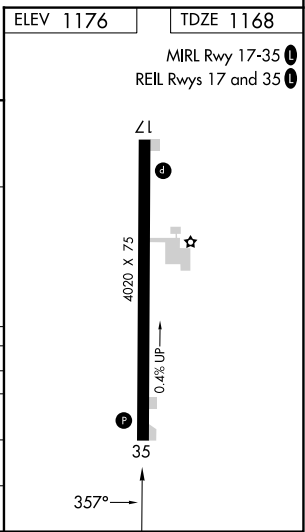
MISSED APPROACH: Climb to 4000 direct WIBUD and hold, continue climb-in-hold to 4000.

AWOS-3 121.025	MINNEAPOLIS CENTER 134.0 288.3	UNICOM 122.7 (CTAF)
--------------------------	--	-------------------------------



NC-3, 22 FEB 2024 to 21 MAR 2024

NC-3, 22 FEB 2024 to 21 MAR 2024



CATEGORY	A	B	C	D
LPV DA	1418-1	250 (300-1)		NA
LNAV/VNAV DA	1654-1½	486 (500-1½)		NA
LNAV MDA	1620-1	452 (500-1)		NA
C CIRCLING	1640-1	464 (500-1)		NA

VOR/DME MCW 114.9 Chan 96	APP CRS 343°	Rwy Idg 4020 TDZE 1168 Apt Elev 1176
---	------------------------	---

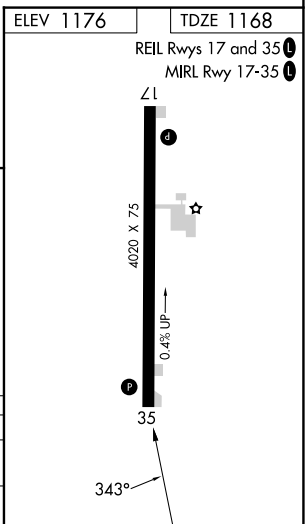
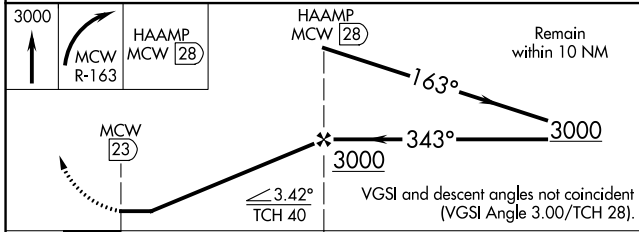
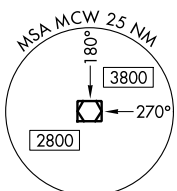
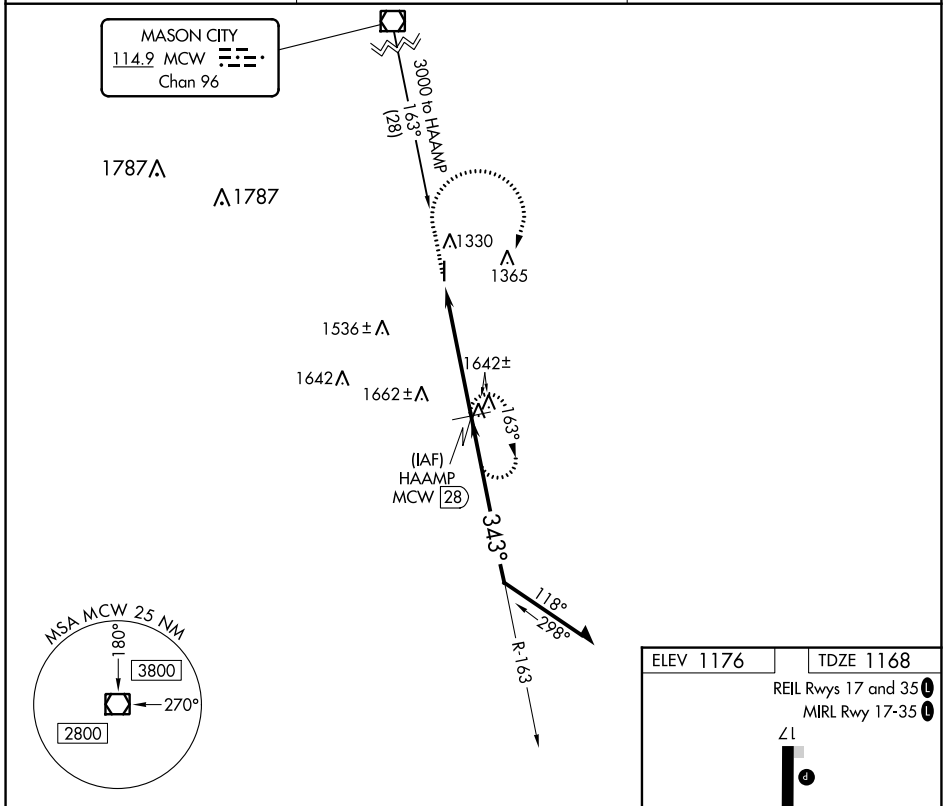
VOR/DME RWY 35

HAMPTON MUNI (HPT)

▼ Rwy 35 helicopter visibility reduction below ¾ SM NA.
▲ NA When local altimeter setting not received, use Mason City altimeter setting.

MISSED APPROACH: Climb to 3000 then right turn via MCW R-163 to HAAMP/28 DME and hold.

AWOS-3 121.025	MINNEAPOLIS CENTER 134.0 288.3	UNICOM 122.7 (CTAF) 1
--------------------------	--	---------------------------------



CATEGORY	A	B	C	D
S-35	1980-1 812 (900-1)	1980-1¼ 812 (900-1¼)		NA
C CIRCLING	1980-1 804 (900-1)	1980-1¼ 804 (900-1¼)		NA

NC-3, 22 FEB 2024 to 21 MAR 2024

NC-3, 22 FEB 2024 to 21 MAR 2024