

WAAS CH 99742 W12A	APP CRS 122°	Rwy ldg TDZE Apt Elev	4248 59 66
--	------------------------	-----------------------------	---------------------------------------

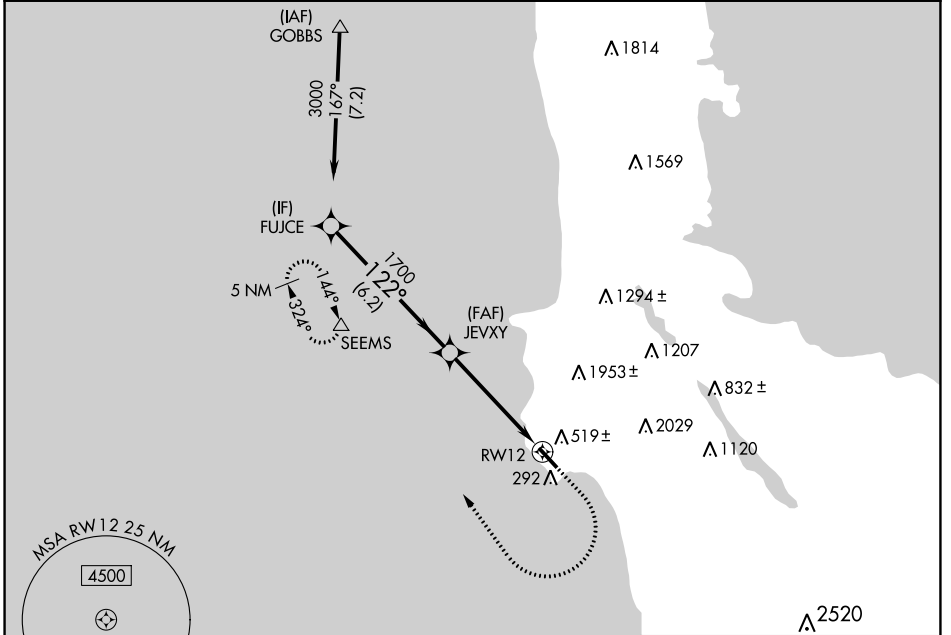
RNAV (GPS) RWY 12

HALF MOON BAY (HAF')

RNP APCH.
 ▼ Rwy 12 helicopter visibility reduction below 3/4 SM NA. For uncompensated Baro-VNAV systems, LNAV/VNAV NA below -15° C or above 54° C.

MISSED APPROACH: Climb to 700 then climbing right turn to 4000 direct SEEMS and hold, continue climb-in-hold to 4000.

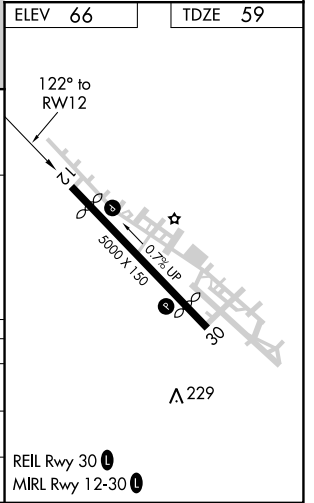
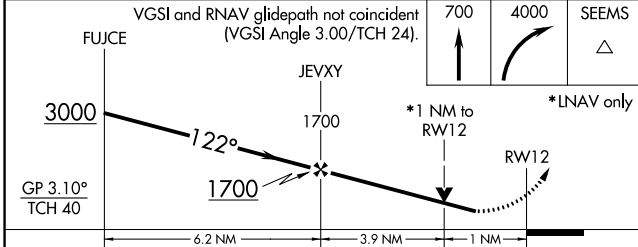
AWOS 127.275	NORCAL APP CON 135.1 307.2	UNICOM 122.8 (CTAF) 0
------------------------	--------------------------------------	--



SW-2, 23 MAR 2023 to 20 APR 2023

SW-2, 23 MAR 2023 to 20 APR 2023

ELEV 66	TDZE 59
----------------	----------------



CATEGORY	A	B	C	D
LPV DA		360-7/8	301 (300-7/8)	
LNAV/VNAV DA		652-1 3/4	593 (600-1 3/4)	
LNAV MDA	660-1	601 (600-1)	660-1 3/4	601 (600-1 3/4)

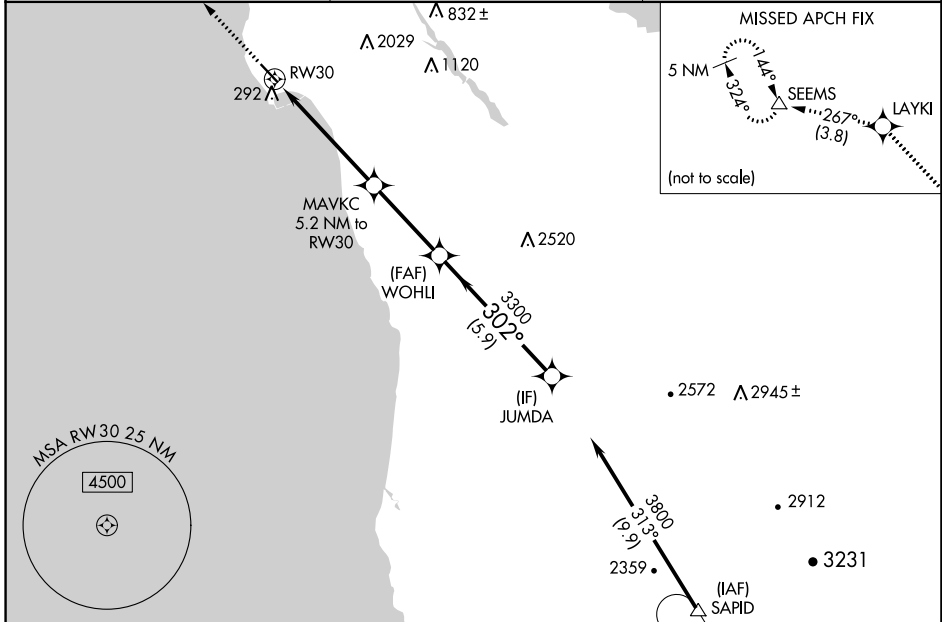
WAAS CH 50302 W30A	APP CRS 302°	Rwy Idg TDZE Apt Elev	4238 54 66
--	------------------------	-----------------------------	---------------------------------------

RNAV (GPS) RWY 30

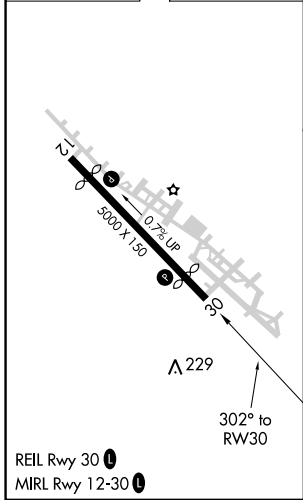
HALF MOON BAY (HAF')

RNP APCH. ▽	MISSED APPROACH: Climb to 4000 direct LAYKI and on track 267° to SEEMS and hold, continue climb-in-hold to 4000.
----------------	--

AWOS-3 127.275	NORCAL APP CON 135.1 307.2	UNICOM 122.8 (CTAF) 0
--------------------------	--------------------------------------	---------------------------------



ELEV 66	TDZE 54
---------	---------



4000	LAYKI	tr 267°	SEEMS	VGSi and RNAV glidepath not coincident (VGSi Angle 3.00/TCH 24).			
*LNAV only		MAVKC 5.2 NM to RW30		JUMDA			
*1.8 NM to RW30		3300		3800		3800	
RW30		2020*		3300		GP 3.50° TCH 40	
1.8 NM		3.4 NM		3.4 NM		5.9 NM	
CATEGORY	A		B		C		D
LPV DA	381-1		327 (400-1)				
LNAV MDA	620-1 566 (600-1)		620-1½ 566 (600-1½)				

SW-2, 23 MAR 2023 to 20 APR 2023

SW-2, 23 MAR 2023 to 20 APR 2023