

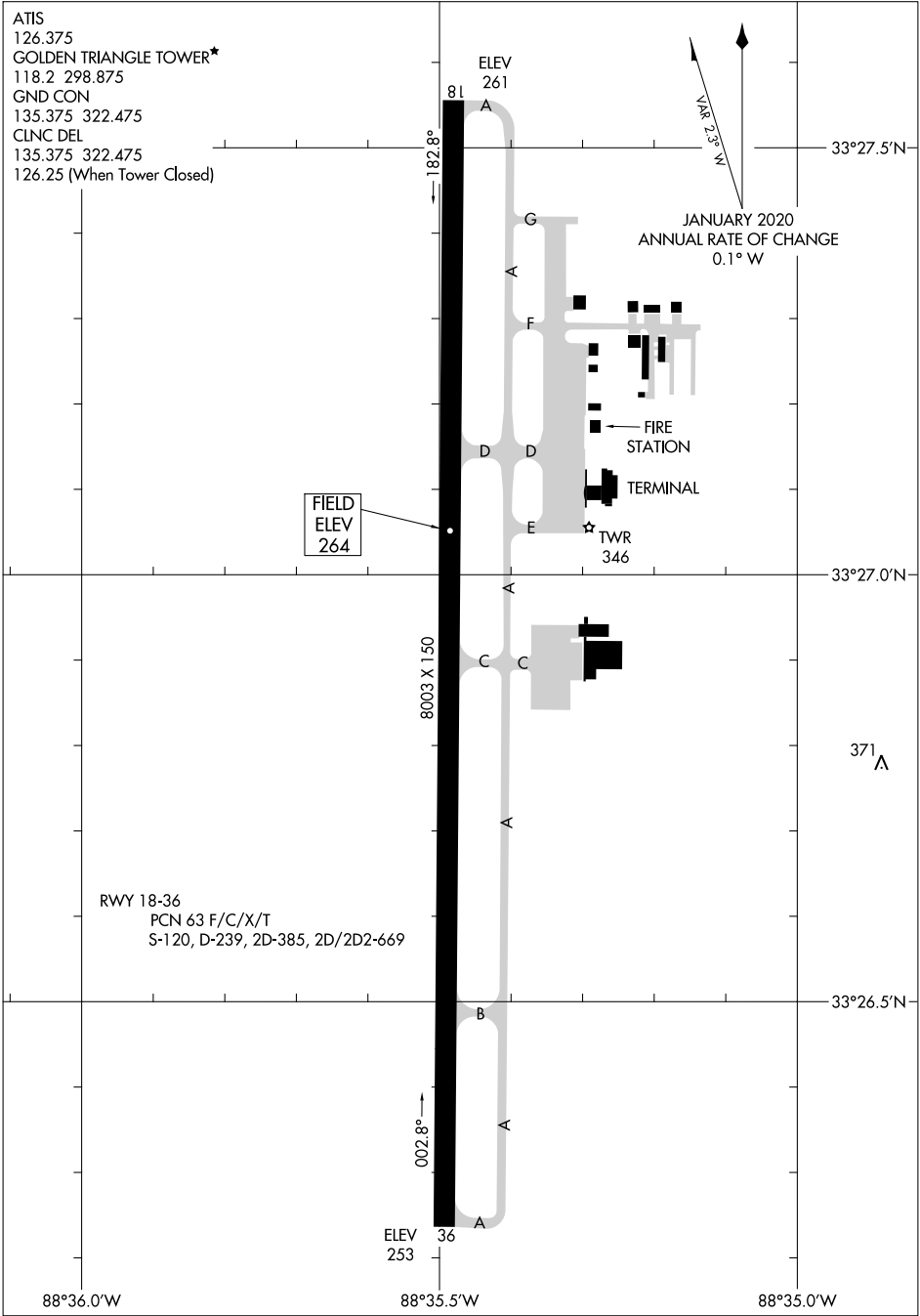
22307

# AIRPORT DIAGRAM

AL-5855 (FAA)

GOLDEN TRIANGLE RGNL (GTR)  
COLUMBUS/W POINT/STARKVILLE, MISSISSIPPI

ATIS  
 126.375  
 GOLDEN TRIANGLE TOWER\*  
 118.2 298.875  
 GND CON  
 135.375 322.475  
 CLNC DEL  
 135.375 322.475  
 126.25 (When Tower Closed)



SC-4, 22 FEB 2024 to 21 MAR 2024

SC-4, 22 FEB 2024 to 21 MAR 2024

# AIRPORT DIAGRAM

22307


COLUMBUS/W POINT/STARKVILLE, MISSISSIPPI  
GOLDEN TRIANGLE RGNL (GTR)

LOC I-GTR <b>110.7</b>	APP CRS <b>182°</b>	Rwy Idg <b>8003</b>
		TDZE <b>264</b>
		Apt Elev <b>264</b>

# ILS or LOC RWY 18

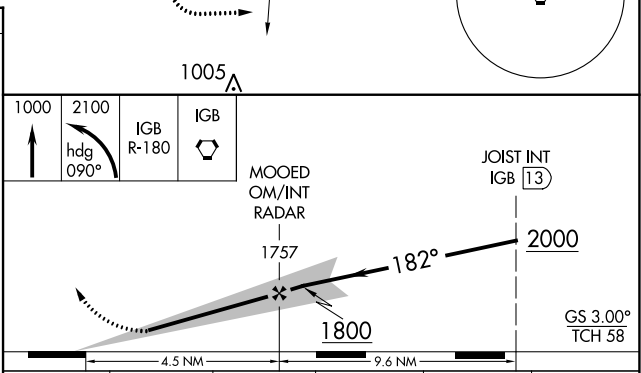
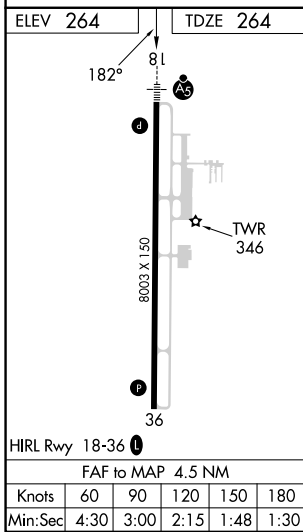
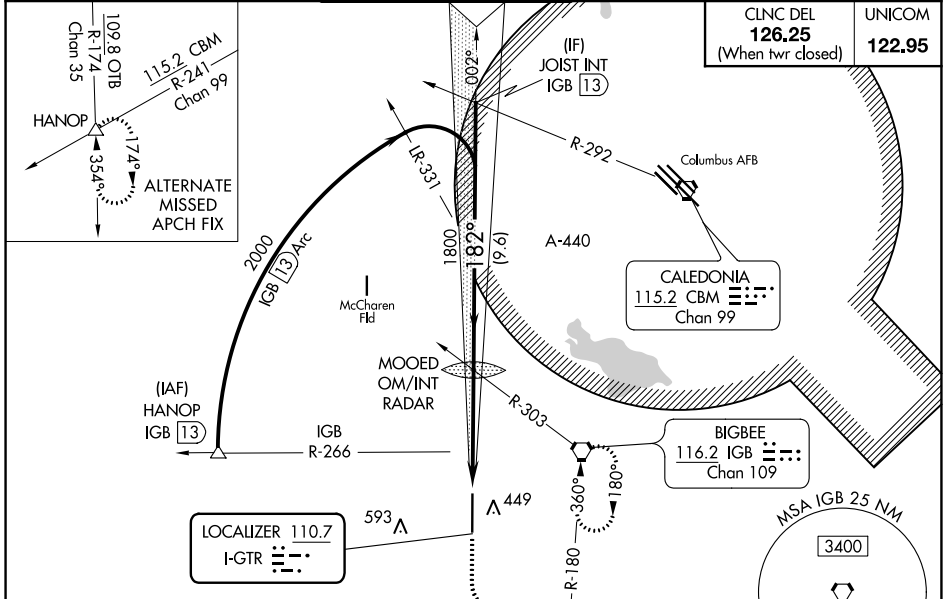
GOLDEN TRIANGLE RGNL (GTR)

**A** For inop ALS, increase S-ILS 18 Cat E visibility to 3/4 SM, S-LOC 18 Cat E visibility to 1 1/2 SM.

**MALSR**  


**MISSED APPROACH:** Climb to 1000 then climbing left turn to 2100 on heading 090° and on IGB VORTAC R-180 to IGB VORTAC and hold, continue climb-in-hold to 2100.

ATIS <b>126.375</b>	COLUMBUS APP CON * <b>135.6 323.275</b>	<b>GOLDEN TRIANGLE TOWER*</b> <b>118.2 (CTAF) 0 298.875</b>	GND CON <b>135.375 322.475</b>	CLNC DEL <b>135.375 322.475</b>
------------------------	--	--	-----------------------------------	------------------------------------



CATEGORY	A	B	C	D	E
S-ILS 18	464-1/2 200 (200-1/2)				
S-LOC 18	660-1/2	396 (400-1/2)	660-5/8		396 (400-5/8)
<input checked="" type="checkbox"/> CIRCLING	760-1	496 (500-1)	960-2 696 (700-2)	960-2 1/4 696 (700-2 1/4)	960-2 1/2 696 (700-2 1/2)

SC-4, 22 FEB 2024 to 21 MAR 2024

SC-4, 22 FEB 2024 to 21 MAR 2024

LOC/DME I-RVT <b>111.15</b> Chan <b>48(Y)</b>	APP CRS <b>002°</b>	Rwy Idg <b>8003</b> TDZE <b>261</b> Apt Elev <b>264</b>
---	------------------------	---

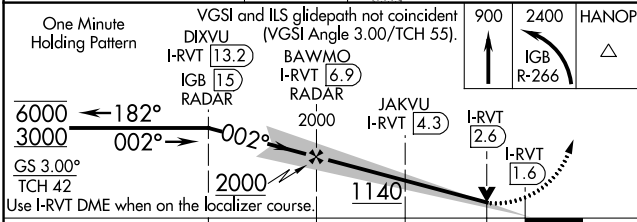
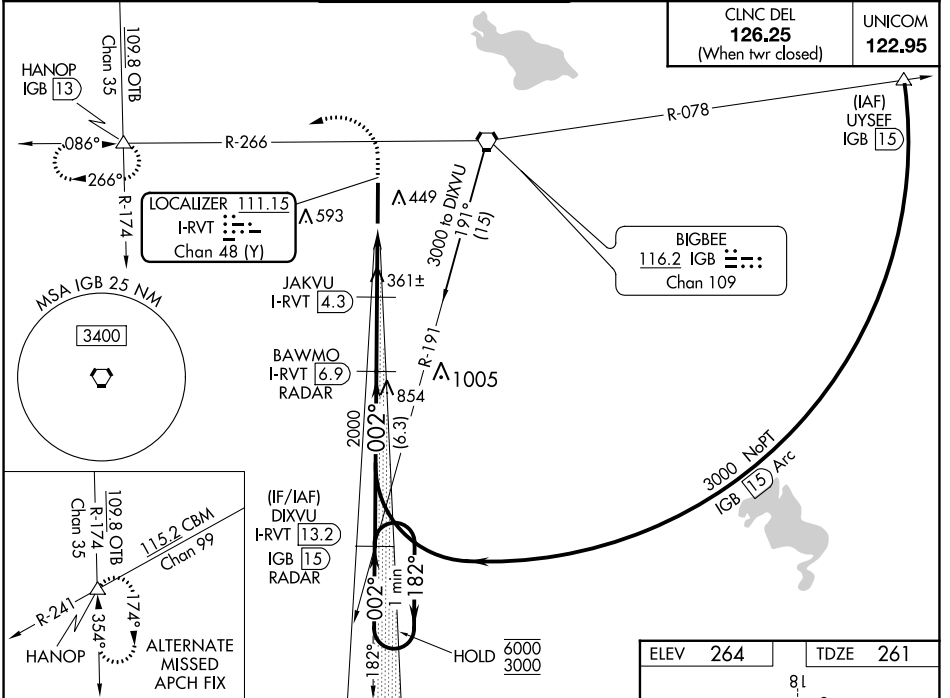
# ILS or LOC RWY 36

GOLDEN TRIANGLE RGNL (GTR)

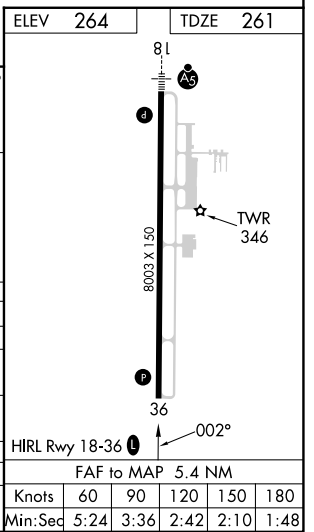
DME or RADAR required.

**▲** MISSED APPROACH: Climb to 900 then climbing left turn to 2400 on IGB VORTAC R-266 to HANOP INT/IGB VORTAC 13 DME and hold.

ATIS <b>126.375</b>	COLUMBUS APP CON* <b>135.6 323.275</b>	GOLDEN TRIANGLE TOWER* <b>118.2 (CTAF) 0 298.875</b>	GND CON <b>135.375 322.475</b>	CLNC DEL <b>135.375 322.475</b>
------------------------	---	---	-----------------------------------	------------------------------------



One Minute Holding Pattern	VGSI and ILS glidepath not coincident (VGSI Angle 3.00/TCH 55).	900	2400	HANOP
I-RVT <b>13.2</b>	BAWMO I-RVT <b>6.9</b> RADAR	IGB R-266		▲
IGB <b>15</b> RADAR	JAKVU I-RVT <b>4.3</b>			
	I-RVT <b>2.6</b>			
	I-RVT <b>1.6</b>			
GS 3.00°	TCH 42			
Use I-RVT DME when on the localizer course.				
	6.3 NM	2.7 NM	1.7 NM	1 NM
CATEGORY	A	C	D	E
S-ILS 36		461- <sup>3</sup> / <sub>4</sub>	200 (200- <sup>3</sup> / <sub>4</sub> )	
S-LOC 36	1140-1 <sup>1</sup> / <sub>4</sub>	879 (900-1 <sup>1</sup> / <sub>4</sub> )	1140-2 <sup>1</sup> / <sub>2</sub>	879 (900-2 <sup>1</sup> / <sub>2</sub> )
<b>C</b> CIRCLING	1140-1 <sup>1</sup> / <sub>4</sub>	876 (900-1 <sup>1</sup> / <sub>4</sub> )	1140-2 <sup>1</sup> / <sub>2</sub>	876 (900-2 <sup>1</sup> / <sub>2</sub> )
			876 (900-2 <sup>3</sup> / <sub>4</sub> )	876 (900-3)
JAKVU FIX MINIMUMS				
S-LOC 36	620-1	359 (400-1)		
<b>C</b> CIRCLING	760-1	496 (500-1)	960-2	960-2 <sup>1</sup> / <sub>4</sub>
			696 (700-2)	696 (700-2 <sup>1</sup> / <sub>4</sub> )
			960-2 <sup>1</sup> / <sub>2</sub>	696 (700-2 <sup>1</sup> / <sub>2</sub> )



SC-4, 22 FEB 2024 to 21 MAR 2024

SC-4, 22 FEB 2024 to 21 MAR 2024

WAAS CH <b>63203</b> <b>W18A</b>	APP CRS <b>182°</b>	Rwy Idg TDZE Apt Elev	<b>8003</b> <b>264</b> <b>264</b>
--	------------------------	-----------------------------	---

# RNAV (GPS) RWY 18

GOLDEN TRIANGLE RGNL (GTR)

RNP APCH - GPS.

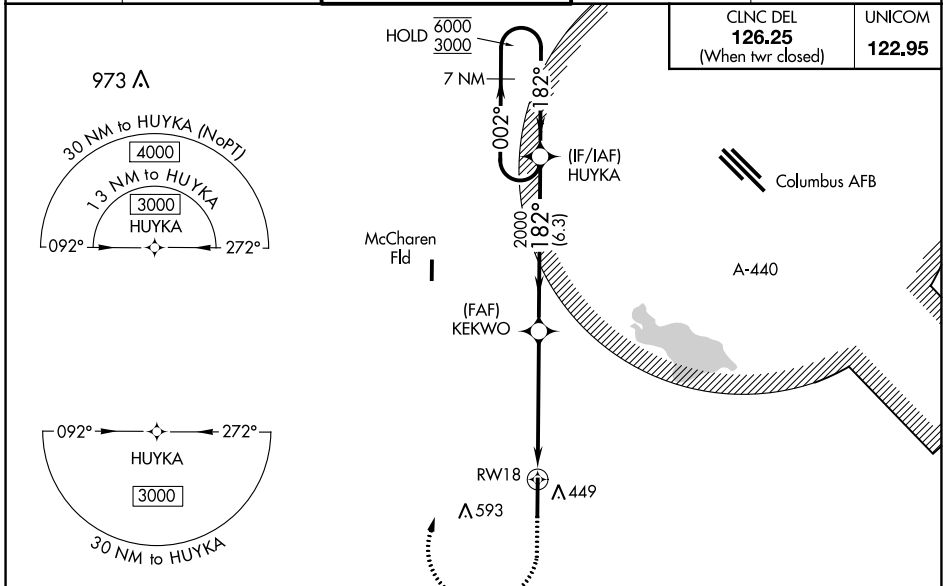
**⚠** For uncompensated Baro-VNAV systems, LNAV/VNAV NA below -15°C or above 54°C. For inop ALS, increase LPV Cat E visibility to 3/4 SM, LNAV/VNAV Cat E to 1 3/8 SM, and LNAV Cat C/D/E to 1 1/8 SM.



**MISSED APPROACH:**  
Climb to 800 then climbing right turn to 3000 direct HUYKA and hold, continue climb-in-hold to 3000.

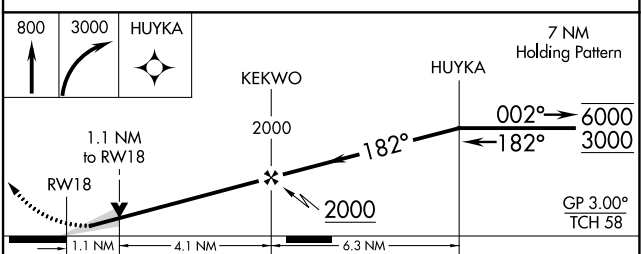
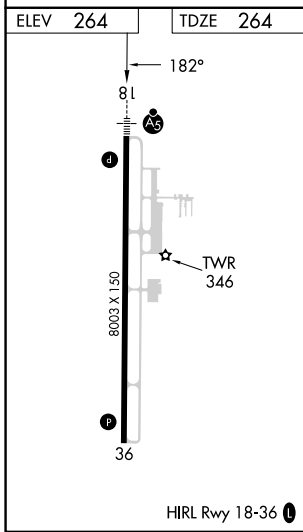
ATIS <b>126.375</b>	COLUMBUS APP CON* <b>135.6 323.275</b>	GOLDEN TRIANGLE TOWER* <b>118.2 (CTAF) 0 298.875</b>	GND CON <b>135.375 322.475</b>	CLNC DEL <b>135.375 322.475</b>
------------------------	---	---	-----------------------------------	------------------------------------

CLNC DEL <b>126.25</b> (When twr closed)	UNICOM <b>122.95</b>
--	-------------------------



SC-4, 22 FEB 2024 to 21 MAR 2024

SC-4, 22 FEB 2024 to 21 MAR 2024



CATEGORY	A	B	C	D	E
LPV DA		464-1/2	200 (200-1/2)		
LNAV/VNAV DA		710-7/8	446 (500-7/8)		
LNAV MDA	680-1/2	416 (500-1/2)	680-3/4	416 (500-3/4)	
<b>C</b> CIRCLING	760-1	496 (500-1)	960-2 696 (700-2)	960-2 1/4 696 (700-2 1/4)	960-2 1/2 696 (700-2 1/2)

WAAS CH <b>99600</b> <b>W36A</b>	APP CRS <b>002°</b>	Rwy Idg <b>8003</b> TDZE <b>261</b> Apt Elev <b>264</b>
--	------------------------	---

# RNAV (GPS) RWY 36

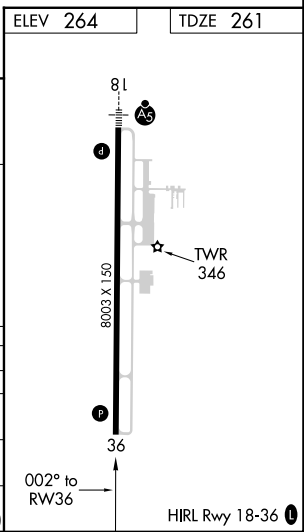
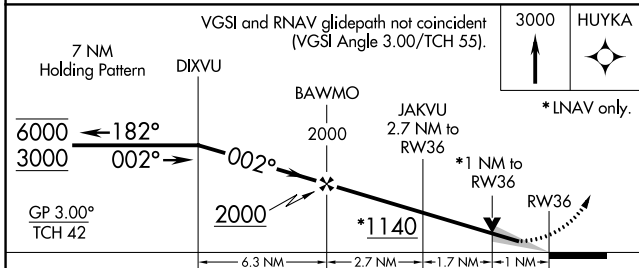
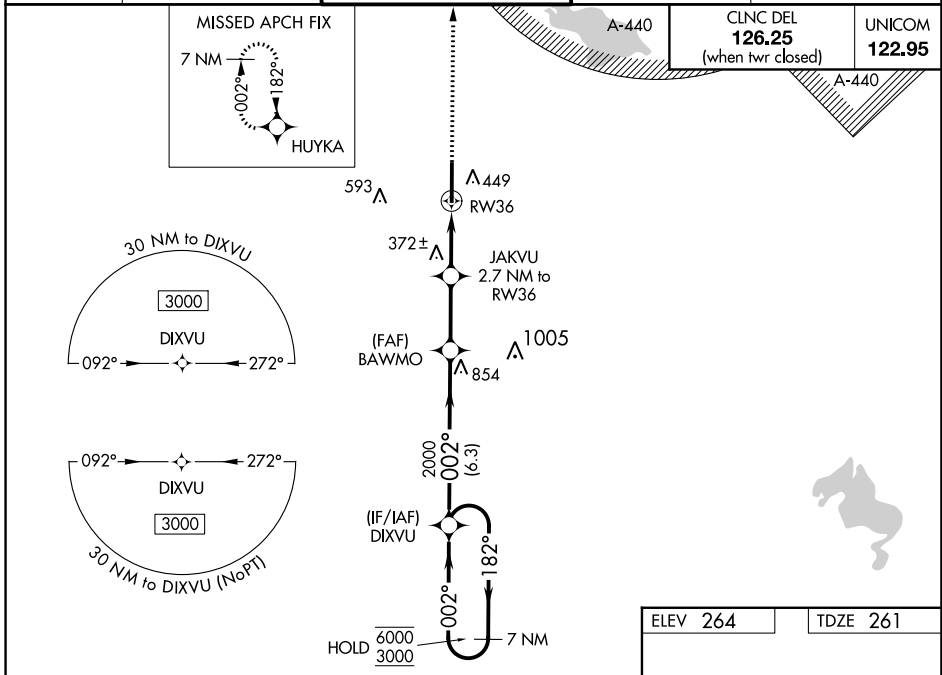
GOLDEN TRIANGLE RGNL (GTR)

**RNP APCH.**

⚠ For uncompensated Baro-VNAV systems, LNAV/VNAV NA below -15°C or above 54°C. When local altimeter setting not received, use Columbus AFB altimeter setting: increase LPV DA to 500 feet, LNAV/VNAV DA to 593 feet and LNAV/VNAV visibility 1/8 SM; increase all MDAs 40 feet. Baro-VNAV and VDP NA when using Columbus AFB altimeter setting.

**MISSED APPROACH:**  
Climb to 3000 direct HUYKA and hold.

ATIS <b>126.375</b>	COLUMBUS APP CON * <b>135.6 323.275</b>	GOLDEN TRIANGLE TOWER * <b>118.2 (CTAF) 298.875</b>	GND CON <b>135.375 322.475</b>	CLNC DEL <b>135,375 322,475</b>
------------------------	--	--	-----------------------------------	------------------------------------



CATEGORY	A	B	C	D	E
LPV DA	461-3/4		200 (200-3/4)		
LNAV/VNAV DA	554-7/8		293 (300-7/8)		
LNAV MDA	640-1 379 (400-1)		640-1 379 (400-1 1/8)		
<b>C</b> CIRCLING	760-1 496 (500-1)		960-2 696 (700-2)	960-2 1/4 696 (700-2 1/4)	960-2 1/2 696 (700-2 1/2)

SC-4, 22 FEB 2024 to 21 MAR 2024

SC-4, 22 FEB 2024 to 21 MAR 2024

INSTRUMENT APPROACH PROCEDURE CHARTS

**A** IFR ALTERNATE AIRPORT MINIMUMS

Pilots must review the IFR Alternate Minimums Notes to determine alternate airport suitability.

**A**NA designation on the approach chart means that pilots may not use that approach as an alternate due to unmonitored facility, absence of weather reporting service, or lack of adequate navigation coverage. Approaches with the **A**NA designation are not listed in this section. **A** designation on the approach chart indicates that the approach procedure has non-standard minimums (for aircraft other than helicopters) or restrictions (for all users) for its use as an alternate.

Alternate Minima (ref: 14 CFR 91.169)

	Precision Approach	Non-Precision Approach
Standard	<b>600-2</b>	<b>800-2</b>
<b>A</b> Non-Standard or restrictions	As indicated below	As indicated below
Helicopters	For the selected approach: Ceiling: 200' above published ceiling Visibility: the greater of 1 SM visibility or the published visibility	
US Military (USA/USN/USAF)	See Service Regulations	

**Note:** For alternate airport flight planning purposes, precision approach operations include: ILS, PAR, and GLS, and Non-Precision approach operations include: NDB, VOR, LOC, TACAN, LDA, SDF, ASR, RNAV (GPS) and RNAV (RNP).

NAME ALTERNATE MINIMUMS

**ABBEVILLE, LA**

ABBEVILLE CHRIS CRUSTA  
MEML (IYA).....RNAV (GPS) Rwy 16  
RNAV (GPS) Rwy 34  
NA when local weather not available.

**ALEXANDRIA, LA**

ALEXANDRIA  
INTL (AEX).....ILS or LOC Rwy 14<sup>1</sup>  
RNAV (GPS) Rwy 14<sup>23</sup>  
RNAV (GPS) Rwy 18<sup>2</sup>  
RNAV (GPS) Rwy 32<sup>2</sup>  
RNAV (GPS) Rwy 36<sup>23</sup>  
VOR Rwy 14<sup>2</sup>  
VOR/DME Rwy 32<sup>2</sup>

<sup>1</sup>LOC, Category D, 800-2½.  
<sup>2</sup>Category D, 800-2½.  
<sup>3</sup>NA when local weather not available.

ESLER RGNL (ESF).....RNAV (GPS) Rwy 9  
RNAV (GPS) Rwy 27  
NA when local weather not available.

**BASTROP, LA**

MOREHOUSE  
MEML (BQP).....RNAV (GPS) Rwy 16  
RNAV (GPS) Rwy 34  
NA when local weather not available.

NAME ALTERNATE MINIMUMS

**BATON ROUGE, LA**

BATON ROUGE METRO,  
RYAN FLD (BTR).....ILS or LOC Rwy 13<sup>124</sup>  
ILS or LOC/DME Rwy 22R<sup>124</sup>  
RADAR-1<sup>25</sup>  
RNAV (GPS) Rwy 4L<sup>4</sup>  
RNAV (GPS) Rwy 13<sup>45</sup>  
RNAV (GPS) Rwy 22R<sup>45</sup>  
RNAV (GPS) Rwy 31<sup>45</sup>  
VOR Rwy 4L<sup>34</sup>

<sup>1</sup>ILS, Category C, 800-2; Category D, 800-2½;  
LOC, Category D, 800-2½.

<sup>2</sup>NA when control tower closed.  
<sup>3</sup>Categories C, D, 800-2½.  
<sup>4</sup>NA when local weather not available.  
<sup>5</sup>Category D, 800-2½.

**BAY ST LOUIS, MS**

STENNIS  
INTL (HSA).....ILS Y or LOC Y Rwy 18<sup>1</sup>  
ILS Z or LOC Z Rwy 18<sup>1</sup>  
NDB Rwy 18  
RNAV (GPS) Rwy 18  
RNAV (GPS) Rwy 36

NA when local weather not available.  
Category D, 800-2½; Category E, 800-2¾.  
<sup>1</sup>NA when control tower closed.

22 FEB 2024 to 21 MAR 2024

22 FEB 2024 to 21 MAR 2024

## NAME ALTERNATE MINIMUMS

**BOGALUSA, LA**

GEORGE R CARR MEML AIR  
 FLD (BXA).....**LOC Rwy 18**  
**RNAV (GPS) Rwy 18**  
**RNAV (GPS) Rwy 36**

NA when local weather not available.  
 Category C, 800-2¼.

**BROOKHAVEN, MS**

BROOKHAVEN-LINCOLN  
 COUNTY (1R7).....**RNAV (GPS) Rwy 23**  
 NA when local weather not available.

**CLARKSDALE, MS**

FLETCHER  
 FLD (CKM).....**RNAV (GPS) Rwy 18**  
**RNAV (GPS) Rwy 36**

NA when local weather not available.

**CLEVELAND, MS**

CLEVELAND  
 MUNI (RNV).....**RNAV (GPS) Rwy 18**  
**RNAV (GPS) Rwy 36**  
**VOR-A**

NA when local weather not available.  
 Category C, 800-2¼; Category D, 800-2½.

**COLUMBIA, MS**

COLUMBIA-MARION  
 COUNTY (0R0).....**RNAV (GPS) Rwy 23**  
 NA when local weather not available.  
 Category D, 800-2¼.

**COLUMBUS/W POINT/****STARKVILLE, MS**

GOLDEN TRIANGLE  
 RGNL (GTR).....**ILS or LOC Rwy 18<sup>13</sup>**  
**ILS or LOC Rwy 36<sup>23</sup>**  
**RNAV (GPS) Rwy 18<sup>4</sup>**  
**RNAV (GPS) Rwy 36<sup>4</sup>**

NA when local weather not available.  
<sup>1</sup>LOC, Category D, 800-2¼; Category E, 800-2½.  
<sup>2</sup>LOC, Categories A, B, 900-2;  
 Category C, 900-2½; Category D, 900-2¾;  
 Category E, 900-3.  
<sup>3</sup>NA when control tower closed.  
<sup>4</sup>Category D, 800-2¼; Category E, 800-2½.

**CORINTH, MS**

ROSCOE  
 TURNER (CRX).....**ILS or LOC Rwy 18<sup>1</sup>**  
**RNAV (GPS) Rwy 18<sup>2</sup>**  
**RNAV (GPS) Rwy 36<sup>2</sup>**

NA when local weather not available.  
<sup>1</sup>LOC, Category D, 800-2¼.  
<sup>2</sup>Category D, 800-2¼.

## NAME ALTERNATE MINIMUMS

**DE RIDDER, LA**

BEAUREGARD  
 RGNL (DRI).....**RNAV (GPS) Rwy 18**  
**RNAV (GPS) Rwy 36**

NA when local weather not available.  
 Category D, 800-2¼.

**GALLIANO, LA**

SOUTH LAFOURCHE LEONARD  
 MILLER JR (GAO).....**RNAV (GPS) Rwy 18**  
**RNAV (GPS) Rwy 36**

NA when local weather not available.

**GONZALES, LA**

LOUISIANA RGNL (REG).....**RNAV (GPS) Rwy 35**  
 Category D, 800-2¼.

**GREENVILLE, MS**

GREENVILLE-MID  
 DELTA (GLH).....**ILS or LOC Rwy 18L**  
**RNAV (GPS) Rwy 18L**  
**RNAV (GPS) Rwy 18R**  
**RNAV (GPS) Rwy 36L**  
**RNAV (GPS) Rwy 36R**  
**VOR Rwy 18R<sup>1</sup>**

NA when local weather not available.  
<sup>1</sup>Categories A, B, C, D, 800-2½.

**GREENWOOD, MS**

GREENWOOD-  
 LEFLORE (GWO).....**ILS or LOC Rwy 18<sup>1</sup>**  
**RNAV (GPS) Rwy 5<sup>2</sup>**  
**RNAV (GPS) Rwy 18<sup>2</sup>**  
**RNAV (GPS) Rwy 36<sup>2</sup>**  
**VOR Rwy 5<sup>2</sup>**

NA when local weather not available.  
<sup>1</sup>ILS, LOC, Category C, 900-2½; Category D,  
 1000-3.  
<sup>2</sup>Category C, 900-2½; Category D, 1000-3.

**GRENADA, MS**

GRENADA  
 MUNI (GNF).....**RNAV (GPS) Rwy 4**  
**RNAV (GPS) Rwy 13**  
**RNAV (GPS) Rwy 22**  
**RNAV (GPS) Rwy 31**

NA when local weather not available.  
 Category C, 800-2¼; Category D, 900-2¼.



ALTERNATE MINS

24025

M3



NAME ALTERNATE MINIMUMS

GULFPORT, MS

GULFPORT-BILOXI INTL (GPT)..... ILS Z or LOC Z Rwy 14<sup>12</sup> ILS Z or LOC Z Rwy 32<sup>345</sup> RADAR-1<sup>5</sup> RNAV (GPS) Rwy 14<sup>17</sup> RNAV (GPS) Rwy 18<sup>18</sup> RNAV (GPS) Rwy 32<sup>18</sup> RNAV (GPS) Rwy 36<sup>18</sup> VOR Y Rwy 14<sup>7</sup> VOR Y Rwy 32<sup>18</sup> VOR Z Rwy 32<sup>19</sup> VOR Z or TACAN Z Rwy 14<sup>16</sup>

- <sup>1</sup>NA when local weather not available.
<sup>2</sup>LOC, Category C, 800-2¼; Category D, 800-2½; Category E, 800-2¾.
<sup>3</sup>LOC, NA when control tower closed.
<sup>4</sup>LOC, Category D, 800-2¼; Category E, 800-2½.
<sup>5</sup>LOC, NA when local weather not available.
<sup>6</sup>Category C, 800-2¼; Category D, 800-2½; Category E, 800-2¾.
<sup>7</sup>Category C, 800-2¼; Category D, 800-2½.
<sup>8</sup>Category D, 800-2¼.
<sup>9</sup>Category D, 800-2¼; Category E, 800-2½.

HAMMOND, LA

HAMMOND NORTHSORE RGNL (HDC)..... RNAV (GPS) Rwy 13 RNAV (GPS) Rwy 18 RNAV (GPS) Rwy 31 RNAV (GPS) Rwy 36

NA when local weather not available. Category D, 900-2¾.

HATTIESBURG, MS

HATTIESBURG BOBBY L. CHAIN MUNI (HBG)..... RNAV (GPS) Y Rwy 13 RNAV (GPS) Z Rwy 13

NA when local weather not available. Category D, 800-2½.

HATTIESBURG-LAUREL, MS

HATTIESBURG/LAUREL RGNL (PIB)..... RNAV (GPS) Rwy 18 RNAV (GPS) Rwy 36 VOR-A

NA when local weather not available. Category C, 900-2¼; Category D, 900-2¾.

NAME ALTERNATE MINIMUMS

HOUMA, LA

HOUMA-TERREBONNE (HUM)..... COPTER VOR/DME Rwy 12 ILS or LOC Rwy 18<sup>12</sup> RNAV (GPS) Rwy 12<sup>3</sup> RNAV (GPS) Rwy 18<sup>3</sup> RNAV (GPS) Rwy 30<sup>3</sup> RNAV (GPS) Rwy 36<sup>3</sup> VOR/DME Rwy 30<sup>3</sup>

- NA when local weather not available.
<sup>1</sup>NA when control tower closed.
<sup>2</sup>ILS, LOC, Category C, 800-2¼; Category D, 800-2½.
<sup>3</sup>Category C, 800-2¼; Category D, 800-2½.

JACKSON, MS

HAWKINS FLD (HKS)..... ILS or LOC Rwy 16<sup>12</sup> RNAV (GPS) Rwy 16<sup>3</sup> RNAV (GPS) Rwy 34<sup>3</sup>

- NA when local weather not available.
<sup>1</sup>NA when control tower closed.
<sup>2</sup>ILS, LOC, Category C, 800-2¼; Category D, 1000-3.
<sup>3</sup>Category C, 800-2¼; Category D, 1000-3.

JACKSON-MEDGAR WILEY EVERS

INTL (JAN)..... ILS or LOC Rwy 16L<sup>123</sup> ILS or LOC Rwy 34L<sup>123</sup> RADAR-1<sup>4</sup> RNAV (GPS) Rwy 16L<sup>35</sup> RNAV (GPS) Rwy 16R<sup>35</sup> RNAV (GPS) Rwy 34L<sup>35</sup> RNAV (GPS) Rwy 34R<sup>35</sup> VOR/DME or TACAN Rwy 16L<sup>35</sup> VOR/DME or TACAN Rwy 16R<sup>35</sup> VOR/DME or TACAN Rwy 34L<sup>35</sup> VOR/DME or TACAN Rwy 34R<sup>35</sup>

- <sup>1</sup>NA when control tower closed.
<sup>2</sup>ILS, Category D, 700-2; Category E, 700-2½; LOC, Category E, 800-2½.
<sup>3</sup>NA when local weather not available.
<sup>4</sup>Category E, 800-2¼.
<sup>5</sup>Category E, 800-2¼.

JENNINGS, LA

JENNINGS (3R7)..... RNAV (GPS) Rwy 8 RNAV (GPS) Rwy 26

NA when local weather not available.

LAFAYETTE, LA

LAFAYETTE RGNL/PAUL FOURNET FLD (LFT)..... ILS or LOC Rwy 4R<sup>12</sup> ILS or LOC Rwy 22L<sup>123</sup> RNAV (GPS) Rwy 4R<sup>2</sup> RNAV (GPS) Rwy 22L<sup>2</sup> RNAV (GPS) Rwy 29<sup>2</sup> VOR/DME Rwy 11<sup>2</sup>

- <sup>1</sup>ILS, Category D, 700-2.
<sup>2</sup>NA when local weather not available.
<sup>3</sup>NA when control tower closed.

22 FEB 2024 to 21 MAR 2024

22 FEB 2024 to 21 MAR 2024



ALTERNATE MINS

24025

M3

SC-4





NAME ALTERNATE MINIMUMS

**LAKE CHARLES, LA**

CHENNAULT  
INTL (CWF).....**RNAV (GPS) Rwy 15**  
**RNAV (GPS) Rwy 33**

NA when local weather not available.  
Category D, 800-2½.

**LAKE CHARLES**

RGNL (LCH).....**ILS or LOC Rwy 15<sup>2</sup>**  
**RADAR-1<sup>1</sup>**  
**RNAV (GPS) Rwy 15<sup>23</sup>**  
**RNAV (GPS) Rwy 33<sup>23</sup>**

<sup>1</sup>When control tower closed, ASR NA.  
<sup>2</sup>NA when local weather not available.  
<sup>3</sup>Category D, 800-2½.

**LAUREL, MS**

HESLER-NOBLE  
FLD (LUL).....**RNAV (GPS) Rwy 13**  
**RNAV (GPS) Rwy 31**  
**VOR-A**

NA when local weather not available.  
Category C, 900-2¼; Category D, 900-2¼.

**LOUISVILLE, MS**

LOUISVILLE/WINSTON  
COUNTY (LMS).....**RNAV (GPS) Rwy 17**  
**RNAV (GPS) Rwy 35**

NA when local weather not available.  
Category D, 800-2¼.

**MADISON, MS**

BRUCE CAMPBELL  
FLD (MBO).....**RNAV (GPS) Rwy 17**  
**RNAV (GPS) Rwy 35**  
**VOR Rwy 17**

NA when local weather not available.  
Category D, 800-2¼.

**MANSFIELD, LA**

C E 'RUSTY'  
WILLIAMS (3F3).....**RNAV (GPS) Rwy 18**  
NA when local weather not available.

**MC COMB, MS**

MC COMB/PIKE COUNTY/JOHN E LEWIS  
FLD (MCB).....**ILS or LOC Rwy 16<sup>1</sup>**  
**RNAV (GPS) Rwy 16<sup>2</sup>**  
**RNAV (GPS) Rwy 34<sup>2</sup>**  
**VOR/DME-A<sup>23</sup>**

<sup>1</sup>LOC, Category D, 800-2½.  
<sup>2</sup>Category D, 800-2½.  
<sup>3</sup>NA when local weather not available.

NAME ALTERNATE MINIMUMS

**MERIDIAN, MS**

KEY FLD (MEI).....**ILS or LOC Rwy 1<sup>123</sup>**  
**ILS or LOC Rwy 19<sup>136</sup>**  
**RNAV (GPS) Rwy 1<sup>37</sup>**  
**RNAV (GPS) Rwy 4<sup>34</sup>**  
**RNAV (GPS) Rwy 19<sup>35</sup>**  
**RNAV (GPS) Rwy 22<sup>34</sup>**  
**VOR-A<sup>7</sup>**

<sup>1</sup>NA when control tower closed.  
<sup>2</sup>ILS, Categories A, B, C, 700-2; Category D, 900-2¼; Category E, 900-3. LOC, Category D, 900-2¼; Category E, 900-3.  
<sup>3</sup>NA when local weather not available.  
<sup>4</sup>Category D, 900-2¼.  
<sup>5</sup>Category D, 900-2¼; Category E, 900-3.  
<sup>6</sup>ILS, Categories A, B, 800-2; Category C, 800-2¼; Category D, 900-2¼; Category E, 900-3; LOC, Category C, 800-2¼; Category D, 900-2¼; Category E, 900-3.  
<sup>7</sup>Category D, 900-2¼; Category E, 900-3.

**MINDEN, LA**

MINDEN (MNE).....**RNAV (GPS) Rwy 1<sup>1</sup>**  
**RNAV (GPS) Rwy 19<sup>1</sup>**  
**VOR/DME-A<sup>2</sup>**

NA when local weather not available.  
<sup>1</sup>Category C, 800-2¼; Category D, 800-2¼.  
<sup>2</sup>Categories A, B, 1300-2; Categories C, D, 1300-3.

**MONROE, LA**

MONROE  
RGNL (MLU).....**ILS or LOC Rwy 4<sup>123</sup>**  
**ILS or LOC Rwy 22<sup>123</sup>**  
**RADAR-1<sup>24</sup>**  
**RNAV (GPS) Rwy 4<sup>14</sup>**  
**RNAV (GPS) Rwy 14<sup>4</sup>**  
**RNAV (GPS) Rwy 22<sup>14</sup>**  
**RNAV (GPS) Rwy 32<sup>14</sup>**  
**VOR/DME Rwy 4<sup>4</sup>**  
**VOR Rwy 22<sup>4</sup>**  
**VOR Rwy 32<sup>14</sup>**

<sup>1</sup>NA when local weather not available.  
<sup>2</sup>NA when control tower closed.  
<sup>3</sup>LOC, Category D, 1100-3.  
<sup>4</sup>Category D, 1100-3.

**NATCHEZ, MS**

HARDY-ANDERS FLD/NATCHEZ-ADAMS  
COUNTY (HEZ).....**ILS or LOC Rwy 14<sup>12</sup>**  
**RNAV (GPS) Rwy 14<sup>3</sup>**  
**RNAV (GPS) Rwy 18<sup>3</sup>**  
**RNAV (GPS) Rwy 32<sup>3</sup>**  
**RNAV (GPS) Rwy 36<sup>3</sup>**

NA when local weather not available.  
<sup>1</sup>NA when FBO closed.  
<sup>2</sup>LOC, Category C, 800-2¼; Category D, 1000-3.  
<sup>3</sup>Category C, 800-2¼; Category D, 1000-3.

22 FEB 2024 to 21 MAR 2024

22 FEB 2024 to 21 MAR 2024

NAME ALTERNATE MINIMUMS

**NATCHITOCHE, LA**

NATCHITOCHE  
 RGNL (IER).....RNAV (GPS) Rwy 17  
 RNAV (GPS) Rwy 35

NA when local weather not available.

**NEW IBERIA, LA**

ACADIANA RGNL (ARA).....ILS or LOC Rwy 35<sup>12</sup>  
 VOR or TACAN Rwy 17<sup>3</sup>  
 VOR Rwy 35<sup>3</sup>

<sup>1</sup>NA when LFT APP CON closed.<sup>2</sup>LOC, Category E, 900-3.<sup>3</sup>Category E, 900-3.**NEW ORLEANS, LA**

LAKEFRONT (NEW).....ILS or LOC Rwy 18R<sup>12</sup>  
 RNAV (GPS) Rwy 18R<sup>3</sup>  
 RNAV (GPS) Rwy 36L<sup>3</sup>  
 VOR/DME Rwy 36L<sup>3</sup>

NA when local weather not available.

<sup>1</sup>NA when control tower closed.<sup>2</sup>LOC, Category D, 900-2¼.<sup>3</sup>Category D, 900-2¼.

LOUIS ARMSTRONG  
 NEW ORLEANS INTL (MSY).....LOC Rwy 20  
 Category D, 800-2¼.

**OAKDALE, LA**

ALLEN PARISH (ACP).....RNAV (GPS) Rwy 18  
 RNAV (GPS) Rwy 36

NA when local weather not available.

**OLIVE BRANCH, MS**

OLIVE BRANCH/  
 TAYLOR FLD (OLV).....ILS or LOC Rwy 18<sup>12</sup>  
 LOC Rwy 36<sup>23</sup>  
 RNAV (GPS) Rwy 18<sup>3</sup>  
 RNAV (GPS) Rwy 36<sup>3</sup>

NA when local weather not available.

<sup>1</sup>ILS, Categories, A, B, C, 700-2; Category D, 800-2½; LOC, Category D, 800-2½.<sup>2</sup>NA when control tower closed.<sup>3</sup>Category D, 800-2½.**OPELOUSAS, LA**

ST LANDRY PARISH (OPL).....VOR Rwy 36  
 NA when local weather not available.  
 Category D, 900-2¼.

**OXFORD, MS**

UNIVERSITY-  
 OXFORD (UOX).....RNAV (GPS) Rwy 9  
 RNAV (GPS) Rwy 27  
 VOR-A

NA when local weather not available.

Category C, 1000-2¼; Category D, 1000-3.

NAME ALTERNATE MINIMUMS

**PASCAGOULA, MS**

TRENT LOTT  
 INTL (PQL).....ILS or LOC Rwy 17<sup>1</sup>  
 RNAV (GPS) Rwy 17  
 RNAV (GPS) Rwy 35

NA when local weather not available.

<sup>1</sup>ILS, LOC, Category A, B, 900-2; Category C, 900-2¼; Category D, 900-3.**PATTERSON, LA**

HARRY P WILLIAMS  
 MEML (PTN).....RNAV (GPS) Rwy 6  
 RNAV (GPS) Rwy 24

NA when local weather not available.

**PHILADELPHIA, MS**

PHILADELPHIA  
 MUNI (MPE).....RNAV (GPS) Rwy 18<sup>1</sup>  
 RNAV (GPS) Rwy 36<sup>2</sup>

<sup>1</sup>Category C, 900-2½; Category D, 900-2¼.<sup>2</sup>Categories A, B, 800-2¼; Category C, 900-2½; Category D, 900-2¼.**PICAYUNE, MS**

PICAYUNE  
 MUNI (MJD).....RNAV (GPS) Y Rwy 18  
 RNAV (GPS) Z Rwy 18<sup>1</sup>  
 RNAV (GPS) Rwy 36<sup>1</sup>  
 VOR-A

NA when local weather not available.

<sup>1</sup>Category D, 1000-3.**RAYMOND, MS**

JOHN BELL  
 WILLIAMS (JWV).....ILS or LOC Rwy 12<sup>1</sup>  
 RNAV (GPS) Rwy 12<sup>2</sup>  
 RNAV (GPS) Rwy 30<sup>2</sup>

NA when local weather not available

<sup>1</sup>ILS, Category C, 800-2; Category D, 800-2¼; LOC, Category D, 800-2¼.<sup>2</sup>Category D, 800-2¼.**RESERVE, LA**

PORT OF SOUTH LOUISIANA EXEC  
 RGNL (APS).....RNAV (GPS) Rwy 17  
 RNAV (GPS) Rwy 35  
 VOR Rwy 35

NA when local weather not available.

Category C, 900-2½.

**RUSTON, LA**

RUSTON RGNL (RSN).....RNAV (GPS) Rwy 18  
 RNAV (GPS) Rwy 36  
 VOR-A

NA when local weather not available.

NAME ALTERNATE MINIMUMS

**SHREVEPORT, LA**

SHREVEPORT  
DOWNTOWN (DTN).....LOC Rwy 14<sup>123</sup>  
RNAV (GPS) Rwy 5<sup>1</sup>  
RNAV (GPS) Rwy 14<sup>13</sup>  
RNAV (GPS) Rwy 23<sup>1</sup>  
RNAV (GPS) Rwy 32<sup>3</sup>

<sup>1</sup>NA when local weather not available.  
<sup>2</sup>NA when control tower closed.  
<sup>3</sup>Category C, 1000-2¼; Category D, 1000-3.

SHREVEPORT

RGNL (SHV).....ILS or LOC Rwy 14<sup>1</sup>  
ILS or LOC Rwy 32<sup>2</sup>  
LOC Rwy 6<sup>3</sup>  
RADAR-1<sup>3</sup>  
RNAV (GPS) Rwy 6<sup>4</sup>  
RNAV (GPS) Rwy 14<sup>4</sup>  
RNAV (GPS) Rwy 24<sup>4</sup>  
RNAV (GPS) Rwy 32<sup>4</sup>

<sup>1</sup>LOC, Category D, 900-2¼; Category E, 900-3.  
<sup>2</sup>LOC, Category D, 900-2¼.  
<sup>3</sup>Category D, 900-2¼; Category E, 900-3.  
<sup>4</sup>Category D, 900-2¼.

**SLIDELL, LA**

SLIDELL (ASD).....RNAV (GPS) Rwy 36  
NA when local weather not available.

**STARKVILLE, MS**

GEORGE M  
BRYAN (STF).....RNAV (GPS) Rwy 18  
RNAV (GPS) Rwy 36  
Category D, 800-2¼.  
NA when local weather not available.

**SULPHUR, LA**

SOUTHLAND FLD (UXL).....LOC Rwy 15  
RNAV (GPS) Rwy 15  
RNAV (GPS) Rwy 33  
NA when local weather not available.

**TALLULAH, LA**

VICKSBURG TALLULAH  
RGNL (TVR).....ILS or LOC Rwy 36  
RNAV (GPS) Rwy 18  
RNAV (GPS) Rwy 36  
NA when local weather not available.

**TUNICA, MS**

TUNICA MUNI (UTA).....ILS or LOC Rwy 35  
RNAV (GPS) Rwy 17  
RNAV (GPS) Rwy 35  
NA when local weather not available.

NAME ALTERNATE MINIMUMS

**TUPELO, MS**

TUPELO RGNL (TUP).....COPTER VOR 023<sup>04</sup>  
ILS Y or LOC Y Rwy 36<sup>1</sup>  
ILS Z or LOC Z Rwy 36<sup>24</sup>  
RNAV (GPS) Rwy 18<sup>34</sup>  
RNAV (GPS) Rwy 36<sup>34</sup>  
VOR Rwy 18<sup>34</sup>

<sup>1</sup>ILS, NA when local weather not available;  
Category D, 800-2½. LOC, NA.  
<sup>2</sup>LOC, Category D, 800-2½.  
<sup>3</sup>Category D, 800-2½.  
<sup>4</sup>NA when local weather not available.

**VICKSBURG, MS**

VICKSBURG  
MUNI (VKS).....RNAV (GPS) Rwy 1<sup>1</sup>  
RNAV (GPS) Rwy 19<sup>2</sup>

<sup>1</sup>Category D, 800-2½.  
<sup>2</sup>Category C, 800-2¼; Category D, 800-2½.

**VIDALIA, LA**

CONCORDIA  
PARISH (0R4).....RNAV (GPS) Rwy 14  
NA when local weather not available.  
Category C, 1000-2¼.

22 FEB 2024 to 21 MAR 2024

22 FEB 2024 to 21 MAR 2024