

WAAS CH <b>90240</b> <b>W07A</b>	APP CRS <b>071°</b>	Rwy Idg <b>4657</b> TDZE <b>3131</b> Apt Elev <b>3158</b>
--	------------------------	---

# RNAV (GPS) RWY 7

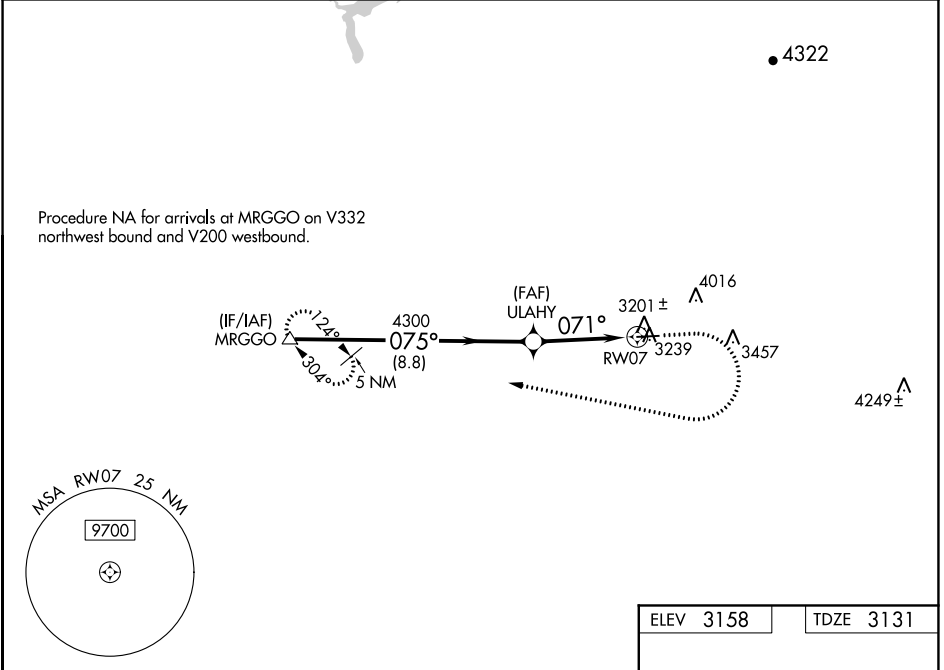
NEVADA COUNTY (GOO)

RNP APCH.

**⚠** Circling NA north of Rwy 7-25. Circling Rwy 25 NA at night. Rwy 7 helicopter visibility reduction below 3/4 SM NA. For uncompensated Baro-VNAV systems, LNAV/VNAV NA below -21°C or above 54°C.

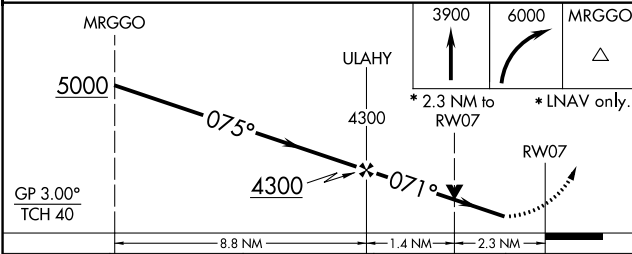
**MISSED APPROACH:** (Do not exceed 250K until MRGGO) Climb to 3900 then climbing right turn to 6000 direct MRGGO and hold.

AWOS-3 <b>121.325</b>	NORCAL APP CON <b>125.4 259.1</b>	UNICOM <b>122.725 (CTAF) 0</b>
--------------------------	--------------------------------------	-----------------------------------

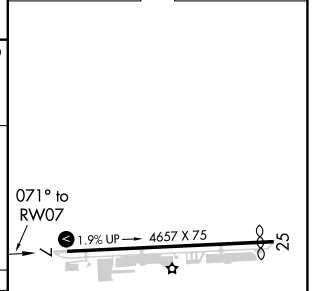


SW-2, 22 FEB 2024 to 21 MAR 2024

SW-2, 22 FEB 2024 to 21 MAR 2024



ELEV 3158	TDZE 3131
-----------	-----------



CATEGORY	A	B	C	D
LPV DA		3606-1 3/8	475 (500-1 3/8)	
LNAV/VNAV DA		3772-1 7/8	641 (700-1 7/8)	
LNAV MDA	3860-1	729 (800-1)	3860-2	729 (800-2)
<b>C</b> CIRCLING	3860-1	702 (800-1)	3880-2 722 (800-2)	3880-2 1/4 722 (800-2 1/4)

MIRL Rwy 7-25 0