

WAAS CH 70333 W15A	APP CRS 158°	Rwy ldg TDZE Apt Elev	4500 1391 1394
--	------------------------	-----------------------------	---

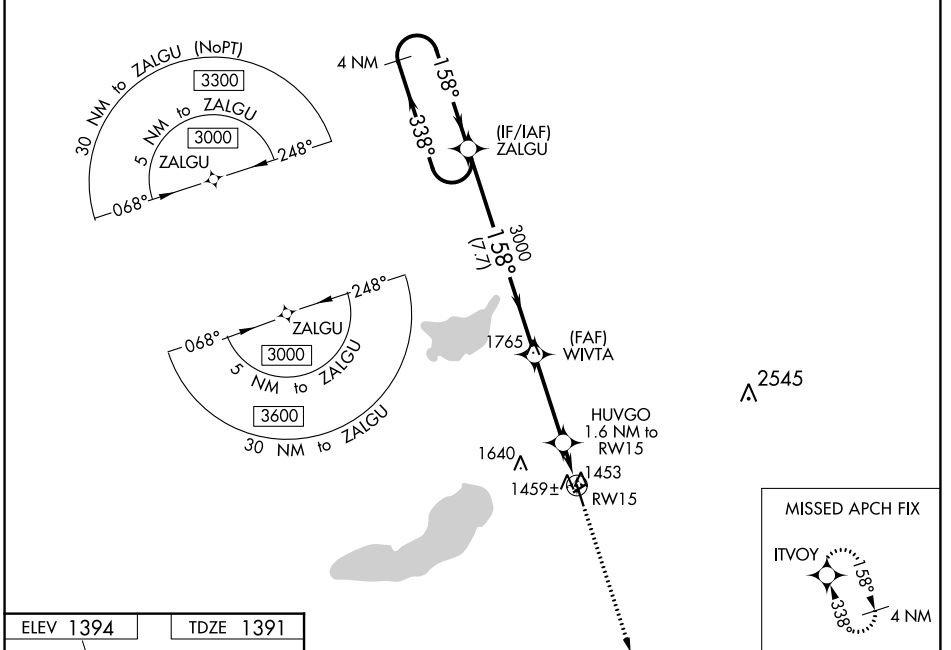
RNAV (GPS) RWY 15

GLENWOOD MUNI (GHW)

⚠ For unconsented Baro-VNAV systems, LNAV/VNAV NA below -17°C (-2°F) or above 54°C (130°F). DME/DME RNP-0.3 NA. Helicopter visibility reduction below 1 SM NA. When local altimeter setting not received, use Alexandria altimeter setting and increase DA 36 feet and all MDA 40 feet. Baro-VNAV and VDP NA when using Alexandria altimeter setting. Circling NA to Rwy's 5/23.

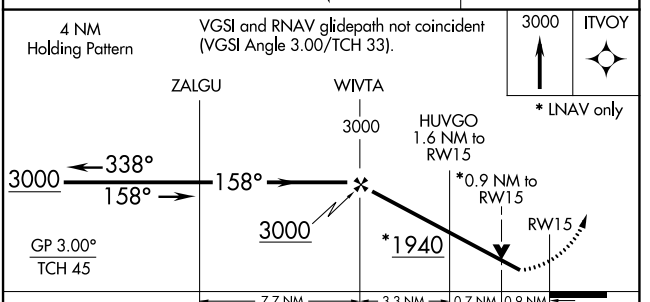
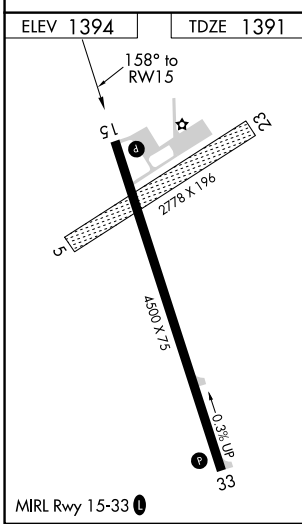
MISSED APPROACH:
Climb to 3000 direct ITVOY and hold.

AWOS-3 118.925	MINNEAPOLIS CENTER 126.1 269.2	GCO 121.725	CTAF 122.9 0
--------------------------	--	-----------------------	------------------------



NC-1, 23 MAR 2023 to 20 APR 2023

NC-1, 23 MAR 2023 to 20 APR 2023



CATEGORY	A	B	C	D
LPV DA		1641-1	250 (300-1)	NA
LNAV/ DA VNAV		1641-1	250 (300-1)	NA
LNAV MDA		1720-1	329 (400-1)	NA
CIRCLING	1840-1	1860-1	1940-1½	NA
	446 (500-1)	466 (500-1)	546 (600-1½)	

WAAS CH 77931 W33A	APP CRS 338°	Rwy Idg TDZE Apt Elev	4500 1384 1394
--	------------------------	-----------------------------	---

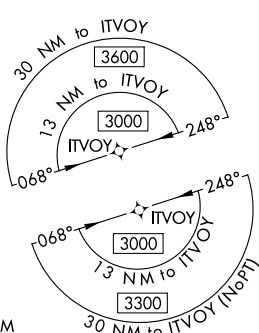
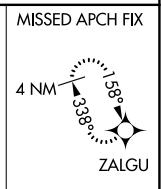
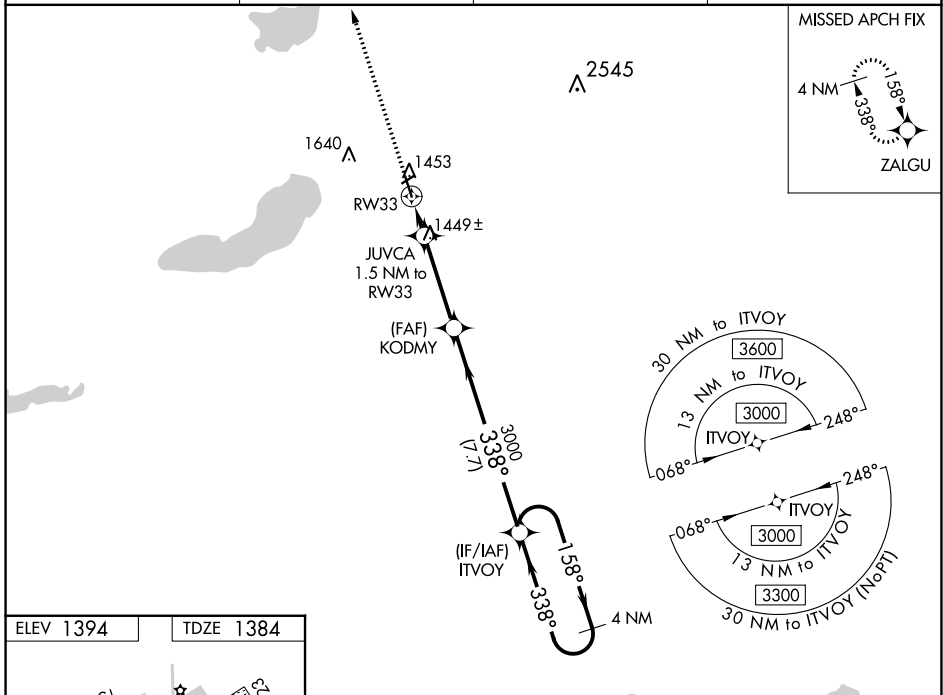
RNAV (GPS) RWY 33

GLENWOOD MUNI (GHW)

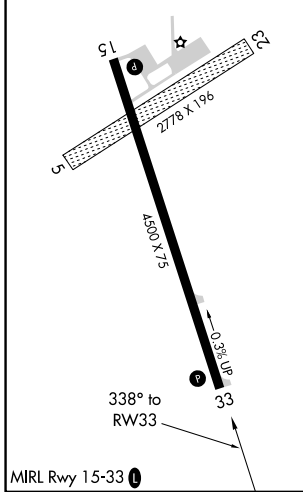
⚠ Baro-VNAV NA when using Alexandria altimeter setting. For uncompensated Baro-VNAV systems, LNAV/VNAV NA below -17°C (2°F) or above 54°C (130°F). DME/DME RNP-0.3 NA. Helicopter visibility reduction below 1 SM NA. When local altimeter setting not received, use Alexandria altimeter setting and increase all DA 36 feet and all MDA 40 feet. Circling NA to Rwy 5/23.

MISSED APPROACH:
Climb to 3000 direct ZALGU and hold.

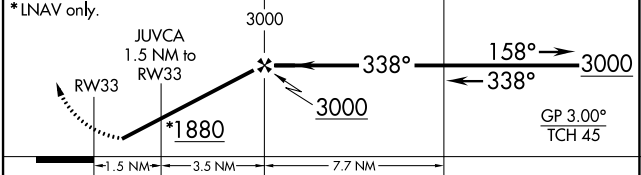
AWOS-3 118.925	MINNEAPOLIS CENTER 126.1 269.2	GCO 121.725	CTAF 122.9
--------------------------	--	-----------------------	----------------------



ELEV 1394	TDZE 1384
-----------	-----------



3000 ZALGU VGSi and RNAV glidepath not coincident (VGSi Angle 3.00/TCH 25). 4 NM Holding Pattern



CATEGORY	A	B	C	D
LPV DA		1634-1 250 (300-1)		NA
LNAV/VNAV DA		1634-1 250 (300-1)		NA
LNAV MDA		1700-1 316 (400-1)		NA
CIRCLING	1840-1 446 (500-1)	1860-1 466 (500-1)	1940-1½ 546 (600-1½)	NA

NC-1, 23 MAR 2023 to 20 APR 2023

NC-1, 23 MAR 2023 to 20 APR 2023

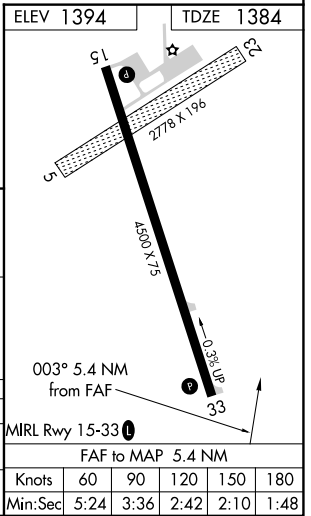
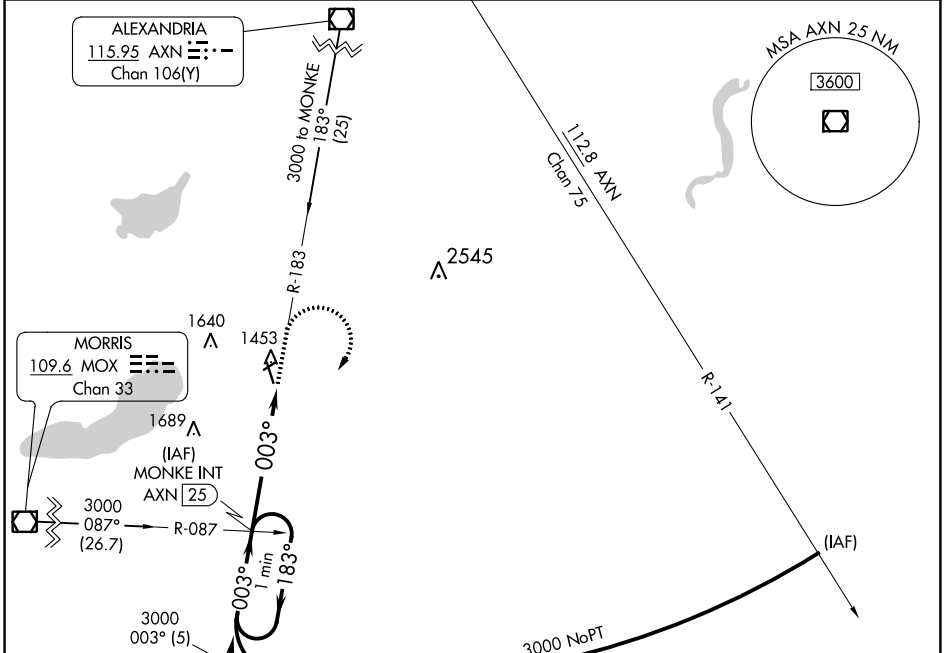
VOR/DME AXN 115.95 Chan 106(Y)	APP CRS 003°	Rwy Idg 4500 TDZE 1384 Apt Elev 1394
--	------------------------	---

VOR RWY 33
GLENWOOD MUNI (GHW)

▼ Circling to Rwy 5/23 NA. When local altimeter setting not received, use Alexandria altimeter setting and increase all MDA 40 feet and S-33 Cat C visibility ¼ mile. Rwy 33 helicopter visibility reduction below ¾ SM NA.

MISSED APPROACH: Climb to 2000, then climbing right turn to 3000 via AXN R-183 to MONKE INT/25 DME and hold.

AWOS-3 118.925	MINNEAPOLIS CENTER 126.1 269.2	GCO 121.725	CTAF 122.90
--------------------------	--	-----------------------	-----------------------



One Minute Holding Pattern	MONKE INT AXN 25	2000	3000	MONKE INT
3000	← 183°	003° →	003°	
5.4 NM				

CATEGORY	A	B	C	D
S-33	1880-1	496 (500-1)	1880-1¼ 496 (500-1¼)	NA
CIRCLING	1880-1	486 (500-1)	1940-1½ 546 (600-1½)	NA

NC-1, 23 MAR 2023 to 20 APR 2023

NC-1, 23 MAR 2023 to 20 APR 2023