

LOC/DME I-FUL 108.9 Chan 26	APP CRS 243°	Rwy Idg 2868 TDZE 95 Apt Elev 96
---	------------------------	---

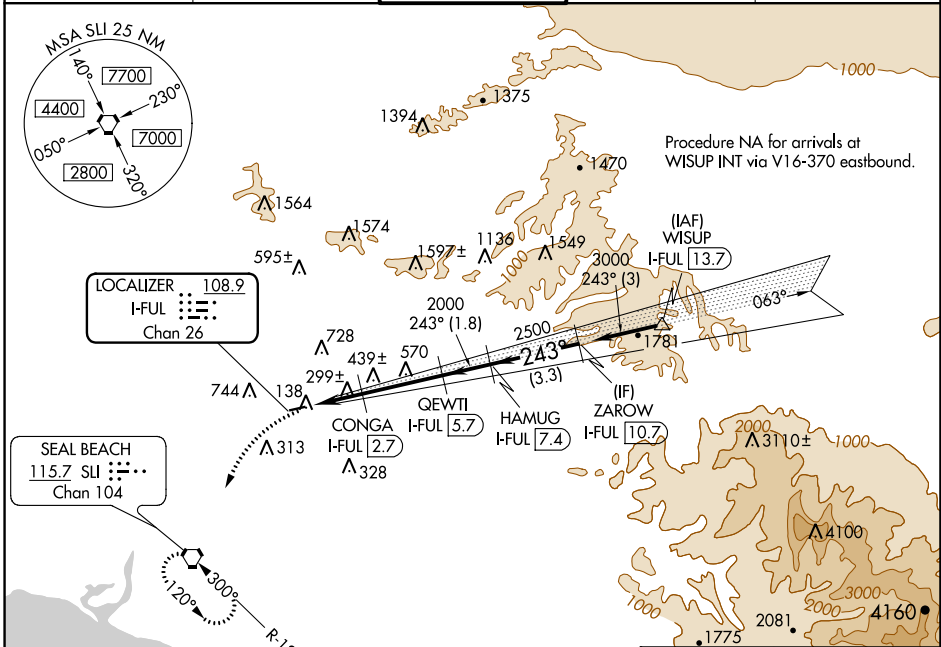
LOC/DME RWY 24

FULLERTON MUNI (F'UL)

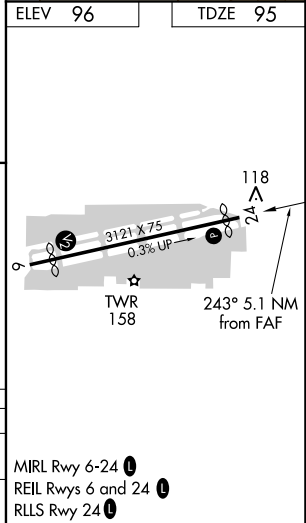
⚠ Inoperative table does not apply.
⚠ Night landing: Rwy 6 NA.
 Helicopter visibility reduction below 1 SM NA.

MISSED APPROACH: Climbing left turn to 2600 direct SLI VORTAC and hold.

ATIS 125.05	SOCAL APP CON 125.35 316.125	FULLERTON TOWER* 119.1 (CTAF) 0	GND CON 121.8	UNICOM 122.95
-----------------------	--	--	-------------------------	-------------------------



	ELEV 96	TDZE 95		
2600	SLI	VGSI and descent angles not coincident (VGSI Angle 4.00/TCH 33).		
		ZAROW I-FUL 10.7		
		HAMUG I-FUL 7.4		
		3000		
		2500		
		2000		
		920		
		Procedure Turn NA		
		2.2 NM		
		2.9 NM		
		1.8 NM		
		3.3 NM		
CATEGORY	A	B	C	D
S-24	560-1	465 (500-1)		NA
CIRCLING	760-1 664 (700-1)	840-1¼ 744 (800-1¼)		NA



MIRL Rwy 6-24
 REIL Rws 6 and 24
 RLLS Rwy 24

SW-3, 17 JUN 2021 to 15 JUL 2021

SW-3, 17 JUN 2021 to 15 JUL 2021

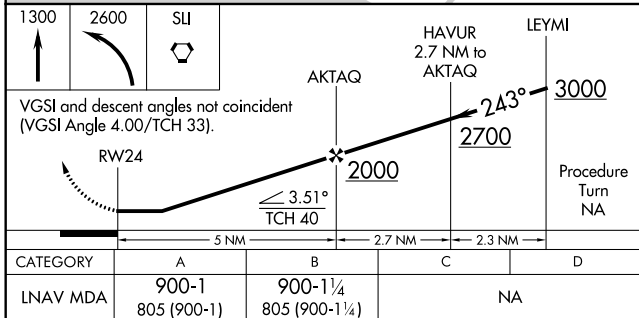
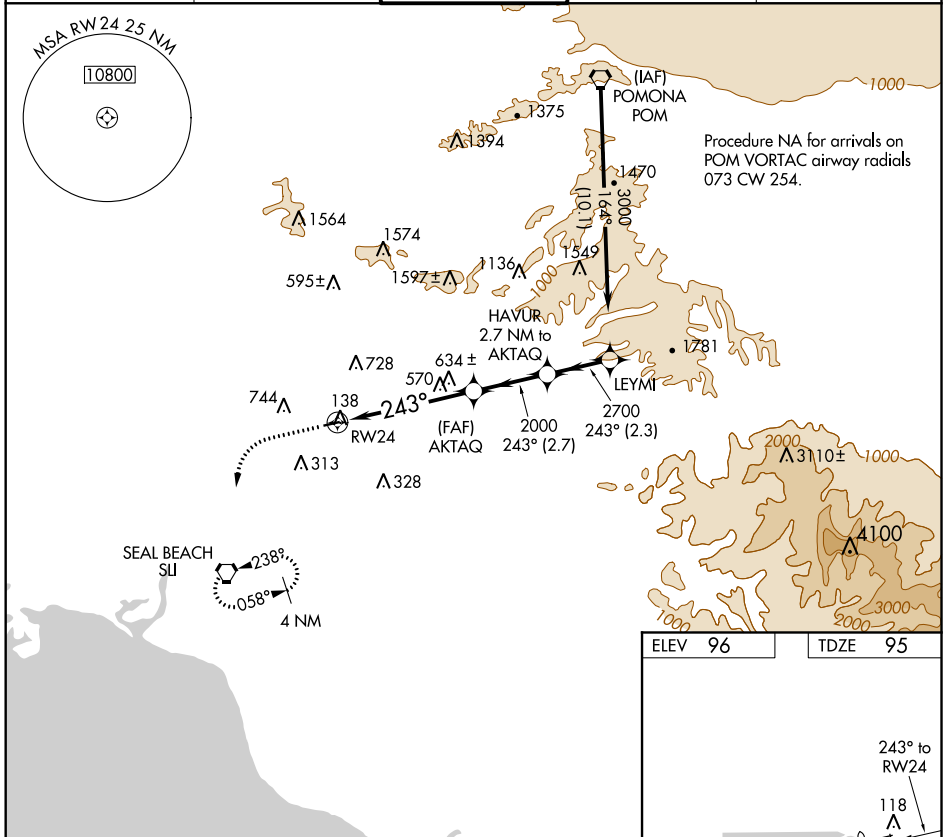
APP CRS	Rwy Idg	2868
243°	TDZE	95
	Apt Elev	96

RNAV (GPS) RWY 24

FULLERTON MUNI (F'UL)

RNP APCH.	Inoperative table does not apply. Helicopter visibility reduction below 1 SM NA.	MISSED APPROACH: Climb to 1300, then climbing left turn to 2600 direct SUI VORTAC and hold.
Inoperative table does not apply. Helicopter visibility reduction below 1 SM NA.		

ATIS 125.05	SOCAL APP CON 125.35 316.125	FULLERTON TOWER ★ 119.1 (CTAF) 0	GND CON 121.8	UNICOM 122.95
-----------------------	--	---	-------------------------	-------------------------



ELEV	96	TDZE	95
------	----	------	----

SW-3, 17 JUN 2021 to 15 JUL 2021

SW-3, 17 JUN 2021 to 15 JUL 2021

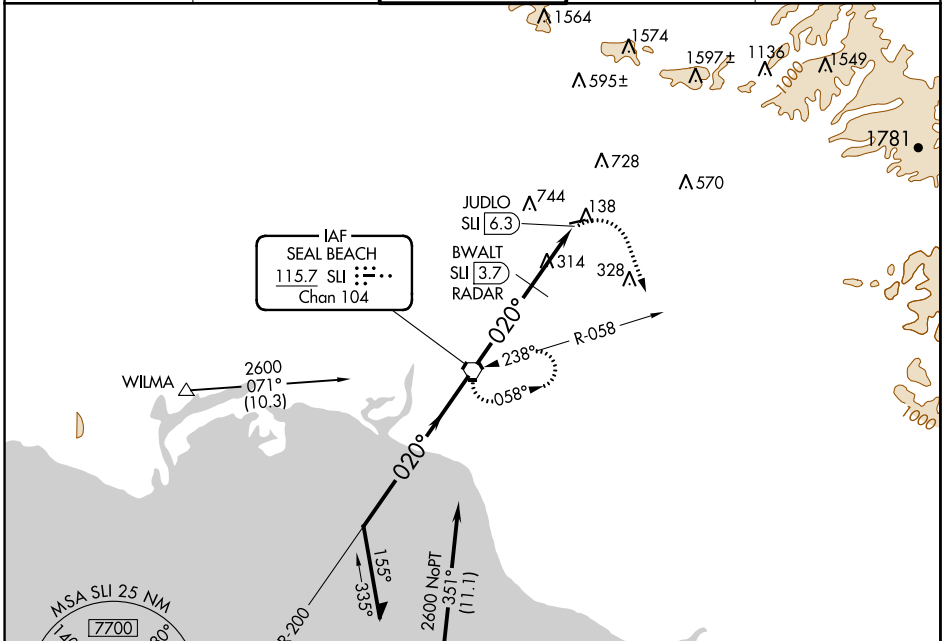
VORTAC SLI 115.7 Chan 104	APP CRS 020°	Rwy Idg TDZE Apt Elev	N/A N/A 96
---	------------------------	-----------------------------	---------------------------------------

VOR-A
FULLERTON MUNI (FUL)

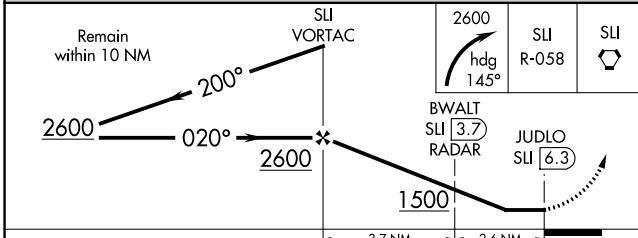
▽ Maximum entry altitude 6000.
▲ Night landing: Rwy 6 NA.
Helicopter visibility reduction below 1 SM NA.

MISSED APPROACH: Climbing right turn to 2600 via heading 145° and SLI R-058 to SLI VORTAC and hold.

ATIS 125.05	SOCAL APP CON 125.35 316.125	FULLERTON TOWER* 119.1 (CTAF) 0	GND CON 121.8	UNICOM 122.95
-----------------------	--	--	-------------------------	-------------------------



ELEV 96
MIRL Rwy 6-24 0
REIL Rwys 6 and 24 0
RLS Rwy 24 0



CATEGORY	A	B	C	D
CIRCLING	1500-1¼ 1404 (1500-1¼)	1500-1½ 1404 (1500-1½)		NA
BWALT FIX MINIMUMS				
CIRCLING	760-1 664 (700-1)	840-1¼ 744 (800-1¼)		NA

FAF to MAP 6.3 NM					
Knots	60	90	120	150	180
Min:Sec	6:18	4:12	3:09	2:31	2:06

SW-3, 17 JUN 2021 to 15 JUL 2021

SW-3, 17 JUN 2021 to 15 JUL 2021