

COULT SEVEN DEPARTURE  
(COULT7, COULT) 29MARI8

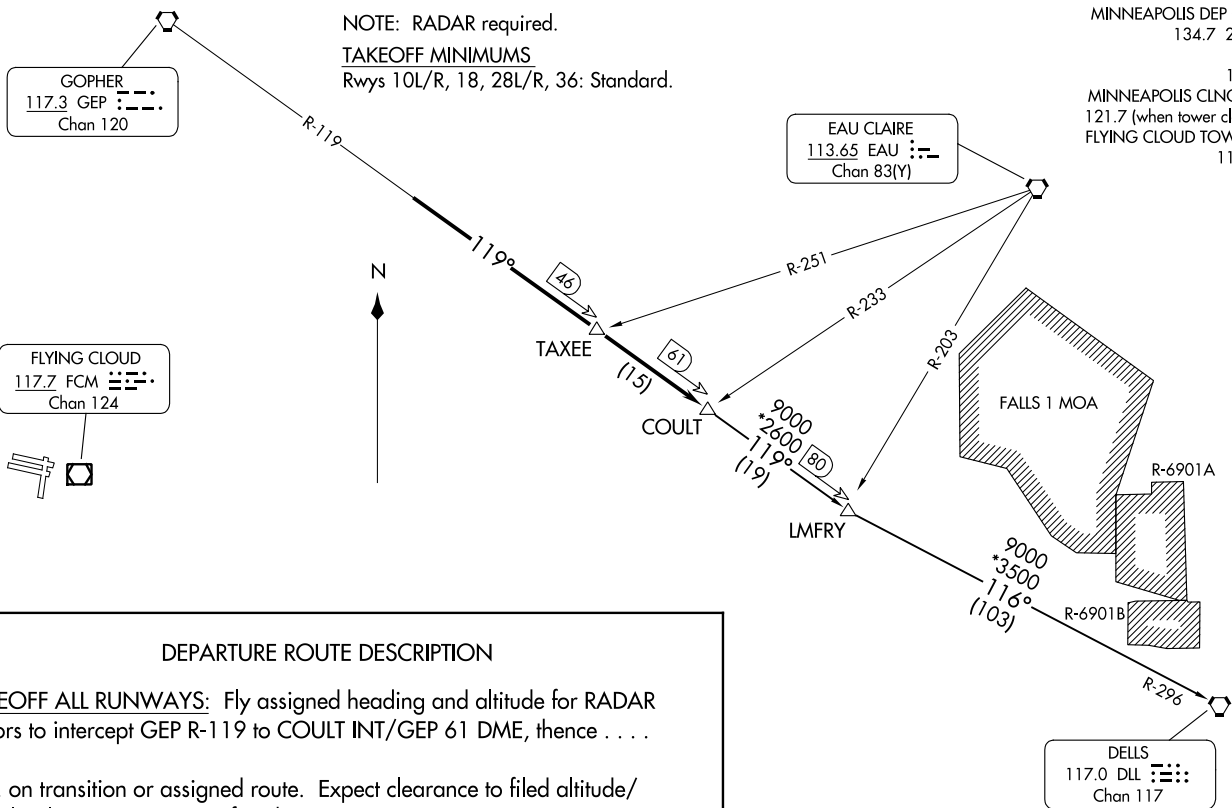
(COULT7, COULT) 23334  
COULT SEVEN DEPARTURE

AL-5094 (FAA)

FLYING CLOUD (FCM)  
MINNEAPOLIS, MINNESOTA

MINNEAPOLIS DEP CON  
134.7 284.7  
ATIS  
124.9  
MINNEAPOLIS CLNC DEL  
121.7 (when tower closed)  
FLYING CLOUD TOWER★  
119.15

NOTE: RADAR required.  
TAKEOFF MINIMUMS  
Rwys 10L/R, 18, 28L/R, 36: Standard.



FLYING CLOUD  
117.Z FCM  
Chan 124

GOPHER  
117.3 GEP  
Chan 120

EAU CLAIRE  
113.65 EAU  
Chan 83(Y)

DELLS  
117.0 DLL  
Chan 117

**DEPARTURE ROUTE DESCRIPTION**

TAKEOFF ALL RUNWAYS: Fly assigned heading and altitude for RADAR vectors to intercept GEP R-119 to COULT INT/GEP 61 DME, thence . . . .  
. . . . on transition or assigned route. Expect clearance to filed altitude/flight level 10 (ten) minutes after departure.

DELLS TRANSITION (COULT7.DLL): From over COULT INT on GEP R-119 to LMFRY INT, then on DLL R-296 to DLL VORTAC.

NOTE: Chart not to scale.

MINNEAPOLIS, MINNESOTA  
FLYING CLOUD (FCM)

DARWIN EIGHT DEPARTURE  
(DWN8.DWN) 05DEC19

(DWN8.DWN) 2334  
DARWIN EIGHT DEPARTURE

AL-5094 (FAA)

FLYING CLOUD (FCM)  
MINNEAPOLIS, MINNESOTA

MINNEAPOLIS DEP CON  
134.7 335.65  
ATIS  
124.9  
MINNEAPOLIS CLNC DEL  
121.7 (when tower closed)  
FLYING CLOUD TOWER\*  
119.15



ST. CLOUD  
112.1 STC  
Chan 58

DARWIN  
109.0 DWN  
Chan 27

ABERDEEN  
113.0 ABR  
Chan 77

MINNEAPOLIS  
115.3 MSP  
Chan 100

FLYING CLOUD  
117.7 FCM  
Chan 124

R-088

60  
107  
10000  
\*3800  
271°  
(167)

R-095

INUNE

R-172

281°  
(33)

### DEPARTURE ROUTE DESCRIPTION

TAKEOFF ALL RUNWAYS: Fly assigned heading and altitude for RADAR vectors to MSP VOR/DME then on MSP R-281 and DWN R-095 to DWN VORTAC, thence . . . .

. . . . then on transition or assigned route. Expect clearance to filed altitude/flight level 10 (ten) minutes after departure.

ABERDEEN TRANSITION (DWN8.ABR): From over DWN VORTAC on DWN R-271 and ABR R-088 to ABR VOR/DME.

TAKEOFF MINIMUMS  
Rwys 10L/R, 18, 28L/R, 36: Standard.

NOTE: RADAR required.

NOTE: Chart not to scale.

MINNEAPOLIS, MINNESOTA  
FLYING CLOUD (FCM)

KBREW ONE DEPARTURE  
(KBREW1.KBREW) 01 FEB 18

(KBREW1.KBREW) 23334  
KBREW ONE DEPARTURE

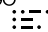
AL-5094 (FAA)

FLYING CLOUD (FCM)  
MINNEAPOLIS, MINNESOTA

**TOP ALTITUDE:  
ASSIGNED BY ATC**

MINNEAPOLIS DEP CON  
134.7 335.65  
ATIS  
124.9  
MINNEAPOLIS CLNC DEL  
121.7 (when tower closed)  
FLYING CLOUD TOWER ★  
119.15

R-116

FARGO  
116.2 FAR   
Chan 109

14000  
3300  
298°  
(120)

KBREW  
14000

55

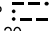
(21)

HOMUR

34 (13)

HRBEK

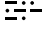
293°  
(21)


GOPHER  
117.3 GEP   
Chan 120

R-348

R-032

R-056

DARWIN  
109.0 DWN   
Chan 27

FLYING CLOUD  
117.7 FCM   
Chan 124



TAKEOFF MINIMUMS  
Rwys 10L/R, 18, 28L/R, 36: Standard.

NOTE: RADAR required.

NOTE: Chart not to scale.

**DEPARTURE ROUTE DESCRIPTOR**

**TAKEOFF ALL RUNWAYS:** Fly assigned heading and altitude for RADAR vectors to GEP VORTAC then on GEP R-293 to KBREW INT/GEP 55 DME, thence . . . .  
. . . .on transition or assigned route. Expect clearance to filed altitude/flight level 10 (ten) minutes after departure.

**FARGO TRANSITION (KBREW1.FAR):** From over KBREW on FAR R-116 to FAR VOR/DME.

MINNEAPOLIS, MINNESOTA  
FLYING CLOUD (FCM)

(ORSKY3.ORSKY) 23334  
**ORSKY THREE DEPARTURE**

AL-5094 (FAA)

FLYING CLOUD (FCM)  
 MINNEAPOLIS, MINNESOTA

MINNEAPOLIS DEP CON  
 134.7 284.7  
 ATIS  
 124.9  
 MINNEAPOLIS CLNC DEL  
 121.7 (when tower closed)  
 FLYING CLOUD TOWER ★  
 119.15

RADAR required.

**TOP ALTITUDE:  
 ASSIGNED BY ATC**

MINNEAPOLIS  
 115.3 MSP  
 Chan 100



R-208

JURNY

208°

(20)

R-258

FARMINGTON  
 115.7 FGT  
 Chan 104

RUMLE

(13)

(33)

R-318

PEDLN  
 9000 (MRA)

(15)

(48)

R-268

HALFWAY  
 111.2 FOW  
 Chan 49

ORSKY  
 9000 (MRA)

(37)

(85)

9000  
 \*2600  
 208°  
 (26)

ONTIJ  
 12000 (MRA)

(11)

R-306

MASON CITY  
 114.9 MCW  
 Chan 96

R-278

R-015

NOTE: Chart not to scale.

**DEPARTURE ROUTE DESCRIPTION**

**TAKEOFF ALL RUNWAYS:** Climb on assigned heading for RADAR vectors to assigned fix on MSP R-208, then on depicted route to ORSKY, then on transition. Maintain ATC assigned altitude. Expect filed altitude 10 minutes after departure.

**ONTIJ TRANSITION (ORSKY3.ONTIJ):** From over ORSKY INT on MSP R-208 to ONTIJ INT.

NC-1, 22 FEB 2024 to 21 MAR 2024

NC-1, 22 FEB 2024 to 21 MAR 2024

**ORSKY THREE DEPARTURE**  
 (ORSKY3.ORSKY) 08SEP22

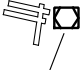
MINNEAPOLIS, MINNESOTA  
 FLYING CLOUD (FCM)

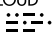
(RST1.RST) 23334

# ROCHESTER ONE DEPARTURE

AL-5094 (FAA)

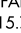
FLYING CLOUD (FCM)  
MINNEAPOLIS, MINNESOTA

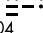



FLYING CLOUD  
117.7 FCM   
Chan 124


**TOP ALTITUDE:**  
**(JETS) 7000/  
(PROPS) 5000**

MINNEAPOLIS DEP CON  
134.7 284.7  
ATIS  
124.9  
MINNEAPOLIS CLNC DEL  
121.7 (when tower closed)  
FLYING CLOUD TOWER ★  
119.15



FARMINGTON  
115.7 FGT   
Chan 104



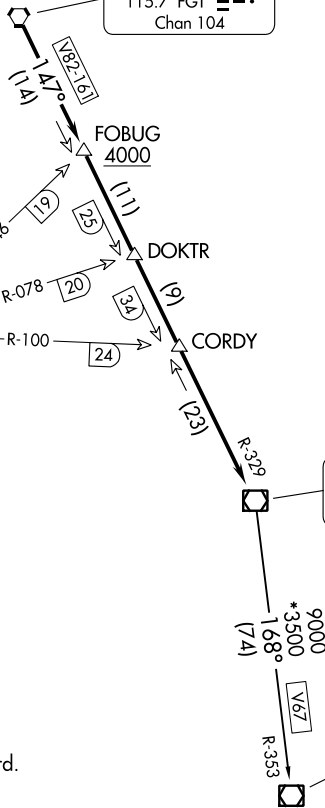
HALFWAY  
111.2 FOW   
Chan 49



ROCHESTER  
112.0 RST   
Chan 57



WATERLOO  
112.2 ALO   
Chan 59



NC-1, 22 FEB 2024 to 21 MAR 2024

NC-1, 22 FEB 2024 to 21 MAR 2024

NOTE: RADAR required.

### TAKEOFF MINIMUMS

Rwys 10L/R, 18, 28L/R, 36: Standard.

NOTE: Chart not to scale.



### DEPARTURE ROUTE DESCRIPTION

TAKEOFF ALL RUNWAYS: Fly assigned heading and altitude for RADAR vectors to FGT VORTAC then on FGT R-147 and RST R-329 to RST VOR/DME. Cross FOBUG INT/FGT 14 DME at or above 4000, thence . . . .

. . . .on assigned transition or assigned route. Expect clearance to filed altitude/flight level 10 (ten) minutes after departure.

WATERLOO TRANSITION (RST1.ALO): From over RST VOR/DME on RST R-168 and ALO R-353 to ALO VOR/DME.

# ROCHESTER ONE DEPARTURE

(RST1.RST) 13SEP18

MINNEAPOLIS, MINNESOTA  
FLYING CLOUD (FCM)

RADAR required.

TOP ALTITUDE:  
ASSIGNED BY ATC

TAKEOFF MINIMUMS  
Rwys 10L/R, 18, 28L/R, 36: Standard.

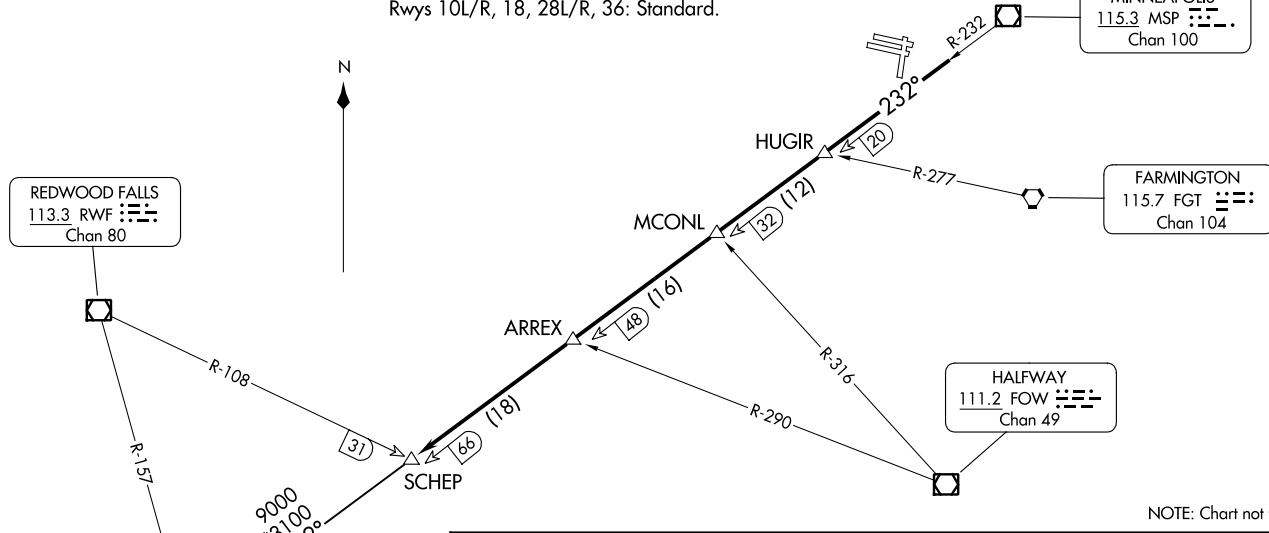
MINNEAPOLIS  
115.3 MSP Chan 100

FARMINGTON  
115.7 FGT Chan 104

HALFWAY  
111.2 FOW Chan 49

MINNEAPOLIS DEP CON  
134.7 284.7  
ATIS  
124.9  
MINNEAPOLIS CLNC DEL  
121.7 (when tower closed)

REDWOOD FALLS  
113.3 RWF Chan 80



NOTE: Chart not to scale.

**DEPARTURE ROUTE DESCRIPTOR**

**TAKEOFF ALL RUNWAYS:** Climb on assigned heading for RADAR vectors to assigned fix on MSP R-232, then on depicted route to SCHEP, then on transition. Maintain ATC assigned altitude. Expect filed altitude 10 minutes after departure.

**RXANN TRANSITION (SCHEP1.RXANN):** From over SCHEP INT on MSP R-232 to RXANN INT.

SCHEP ONE DEPARTURE  
(SCHEP1.SCHEP) 08SEP22

(SCHEP1.SCHEP) 23334  
SCHEP ONE DEPARTURE

AL-5094 (FAA)

FLYING CLOUD (FCM)  
MINNEAPOLIS, MINNESOTA

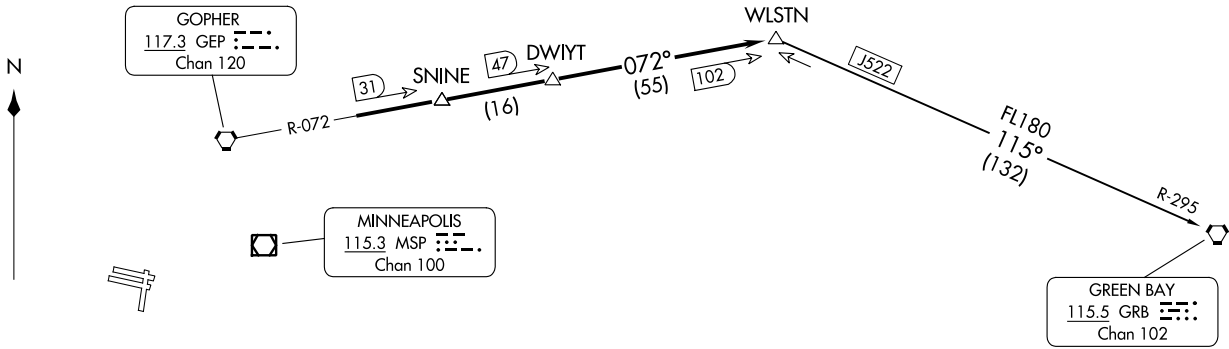
MINNEAPOLIS, MINNESOTA  
FLYING CLOUD (FCM)

WLSTN SEVEN DEPARTURE  
(WLSTN7.WLSTN) 17AUG17

MINNEAPOLIS DEP CON  
134.7 335.65  
ATIS  
124.9  
MINNEAPOLIS CLNC DEL  
121.7 (when tower closed)  
FLYING CLOUD TOWER★  
119.15

TAKEOFF MINIMUMS  
Rwys 10L/R, 18, 28L/R, 36: Standard.

**TOP ALTITUDE:**  
**(JETS) 7000/**  
**(PROPS) 5000**



(WLSTN7.WLSTN) 23334  
WLSTN SEVEN DEPARTURE  
AL-5094 (FAA)

FLYING CLOUD (FCM)  
MINNEAPOLIS, MINNESOTA

**DEPARTURE ROUTE DESCRIPTION**

TAKEOFF ALL RUNWAYS: Fly assigned heading and altitude for RADAR vectors to GEP R-072 to WLSTN/GEP 102 DME. Thence . . .

. . . on assigned transition or assigned route. Expect clearance to filed altitude/flight level 10 (ten) minutes after departure.

GREEN BAY TRANSITION (WLSTN7.GRB): From over WLSTN on GRB R-295 to GRB VORTAC.

NOTE: RADAR required.  
NOTE: Chart not to scale.

MINNEAPOLIS, MINNESOTA  
FLYING CLOUD (FCM)

ZMBRO SEVEN DEPARTURE  
(ZMBRO7.ZMBRO) 17AUG17

MINNEAPOLIS, MINNESOTA  
FLYING CLOUD (FCM)

MINNEAPOLIS DEP CON  
134.7 284.7  
ATIS  
124.9  
MINNEAPOLIS CLNC DEL  
121.7 (when tower closed)  
FLYING CLOUD TOWER★  
119.15

**TOP ALTITUDE:  
(JETS) 7000/  
(PROPS) 5000**

**DEPARTURE ROUTE DESCRIPTION**

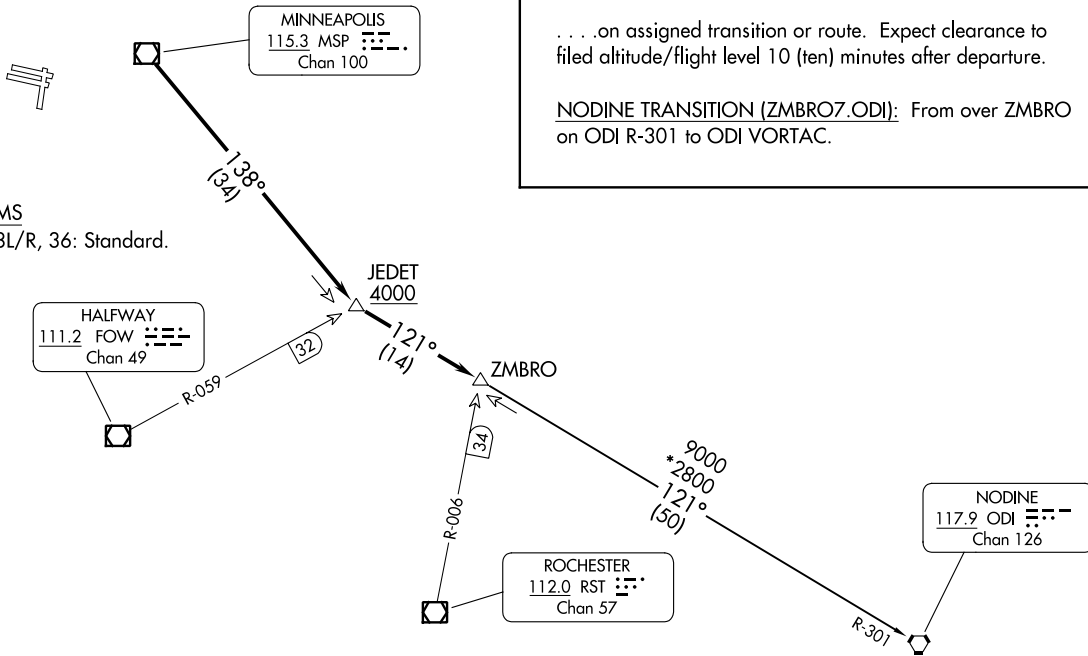
**TAKEOFF ALL RUNWAYS:** Fly assigned heading and altitude for RADAR vectors to MSP VOR/DME then on MSP R-138 to cross JEDET INT/MSP 34 DME, at or above 4000; then on ODI R-301 to ZMBRO INT/ODI 50 DME, thence . . . .

. . . .on assigned transition or route. Expect clearance to filed altitude/flight level 10 (ten) minutes after departure.

NODINE TRANSITION (ZMBRO7.ODI): From over ZMBRO on ODI R-301 to ODI VORTAC.

TAKEOFF MINIMUMS

Rwys 10L/R, 18, 28L/R, 36: Standard.



NOTE: RADAR required.

NOTE: Chart not to scale.

(ZMBRO7.ZMBRO) 23334  
ZMBRO SEVEN DEPARTURE

AL-5094 (FAA)

FLYING CLOUD (FCM)  
MINNEAPOLIS, MINNESOTA