

WAAS CH 61019 W02A	APP CRS 022°	Rwy ldg TDZE Apt Elev	3999 929 946
----------------------------------------	------------------------	-----------------------------	-----------------------------------------

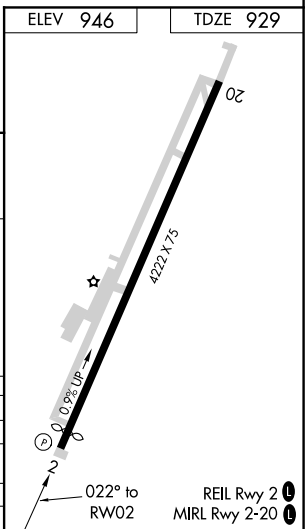
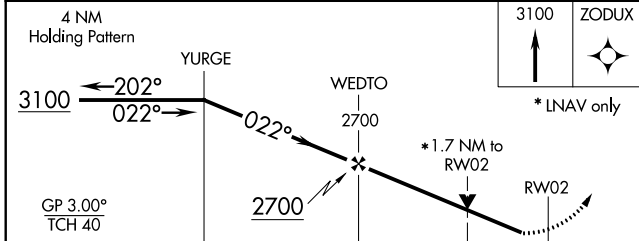
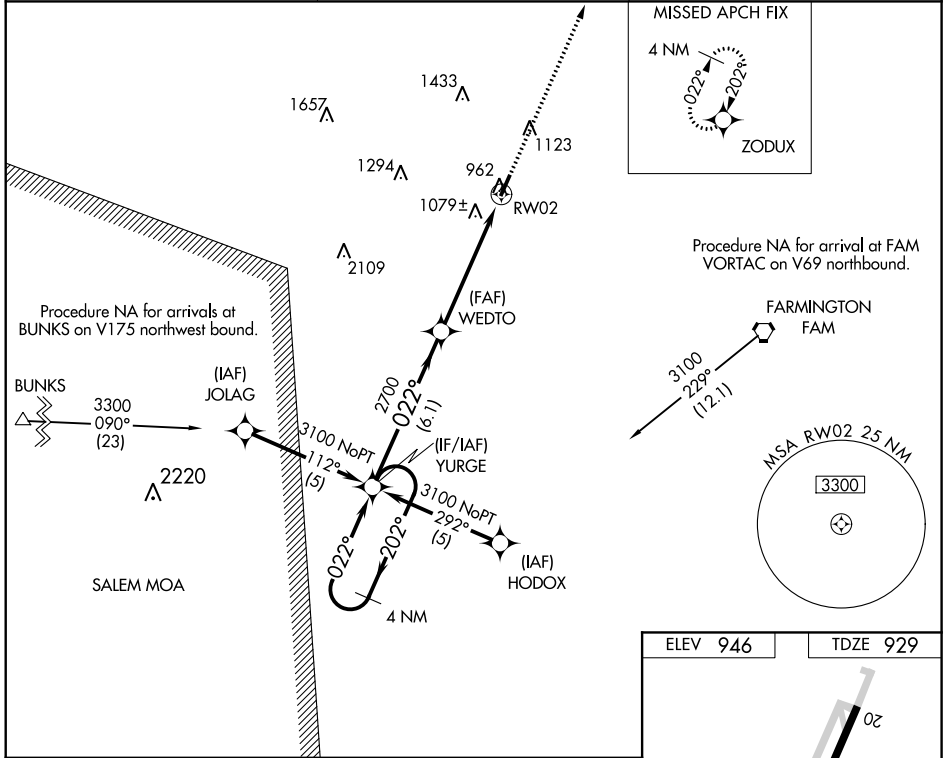
RNAV (GPS) RWY 2

FARMINGTON RGNL (FAM)

⚠ For uncompensated Baro-VNAV systems, LNAV/VNAV NA below -16°C (4°F) or above 54°C (130°F).
⚠ DME/DME RNP-0.3 NA. VDP and Baro-VNAV NA when using Sparta altimeter setting. When local altimeter setting not received, use Sparta altimeter setting and increase all DA 154 feet and all MDA 160 feet; increase LPV and LNAV/VNAV all Cats visibility ½ mile. Circling to Rwy 20 NA at night.
 Rwy 2 helicopter visibility reduction below ¾ SM NA.

MISSED APPROACH:
 Climb to 3100 direct ZODUX and hold.

AWOS-3PT 119.275	KANSAS CITY CENTER 127.475 346.275	UNICOM 122.8 (CTAF)
----------------------------	----------------------------------------------	-------------------------------



CATEGORY	A	B	C	D
LPV DA	1179-1	250 (300-1)		NA
LNAV/VNAV DA	1479-2	550 (600-2)		NA
LNAV MDA	1500-1	571 (600-1)		NA
CIRCLING	1500-1	554 (600-1)		NA

NC-3, 19 MAY 2022 to 16 JUN 2022

NC-3, 19 MAY 2022 to 16 JUN 2022

APP CRS	Rwy Idg	4222
202°	TDZE	946
	Apt Elev	946

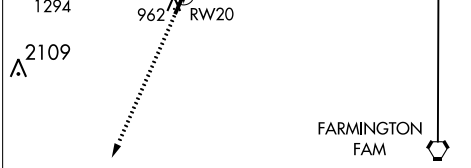
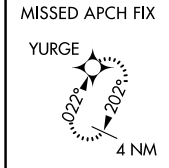
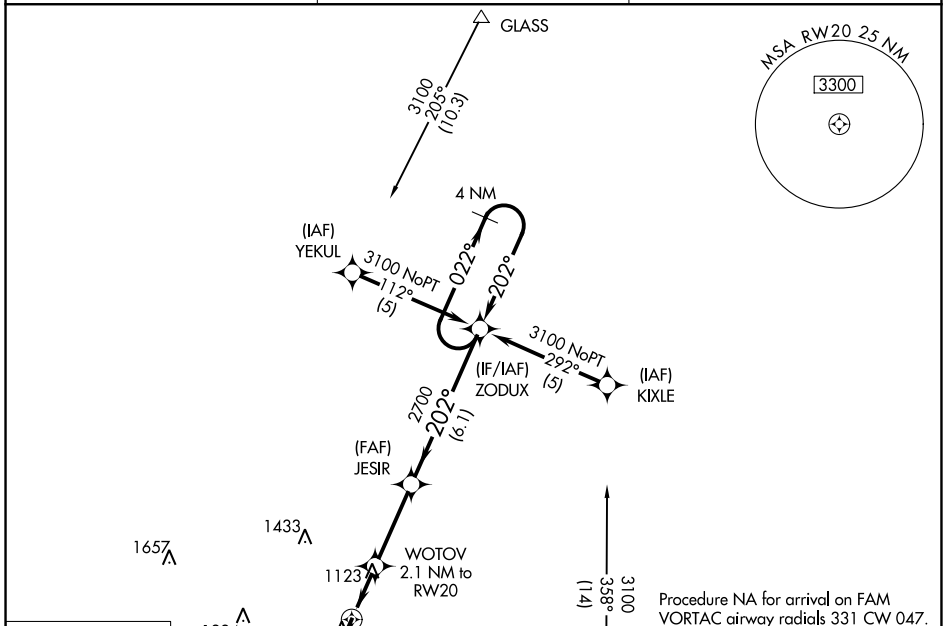
RNAV (GPS) RWY 20

FARMINGTON RGNL (FAM)

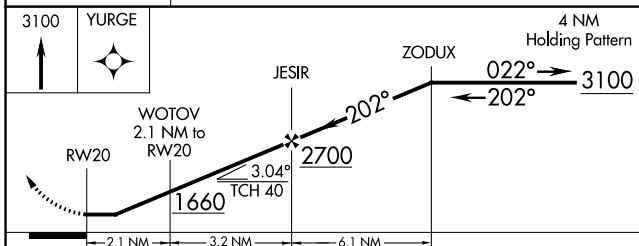
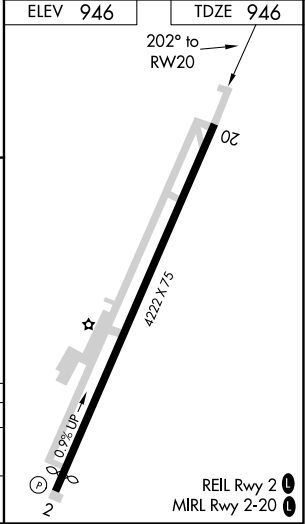
▽ DME/DME RNP-0.3 NA. Straight-In/Circling Rwy 20 procedure NA at night. Visibility reduction by helicopters NA. When local altimeter setting not received, use Sparta altimeter setting and increase all MDA 160 feet.

▲ MISSED APPROACH: Climb to 3100 direct YURGE and hold.

AWOS-3PT 119.275	KANSAS CITY CENTER 127.475 346.275	UNICOM 122.8 (CTAF) 0
----------------------------	----------------------------------------------	---------------------------------



Procedure NA for arrival on FAM VORTAC airway radials 331 CW 047.



CATEGORY	A	B	C	D
LNAV MDA	1440-1	494 (500-1)		NA
CIRCLING	1440-1 494 (500-1)	1500-1 554 (600-1)		NA

NC-3, 19 MAY 2022 to 16 JUN 2022

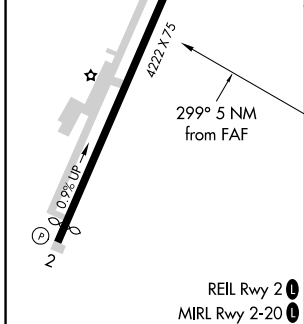
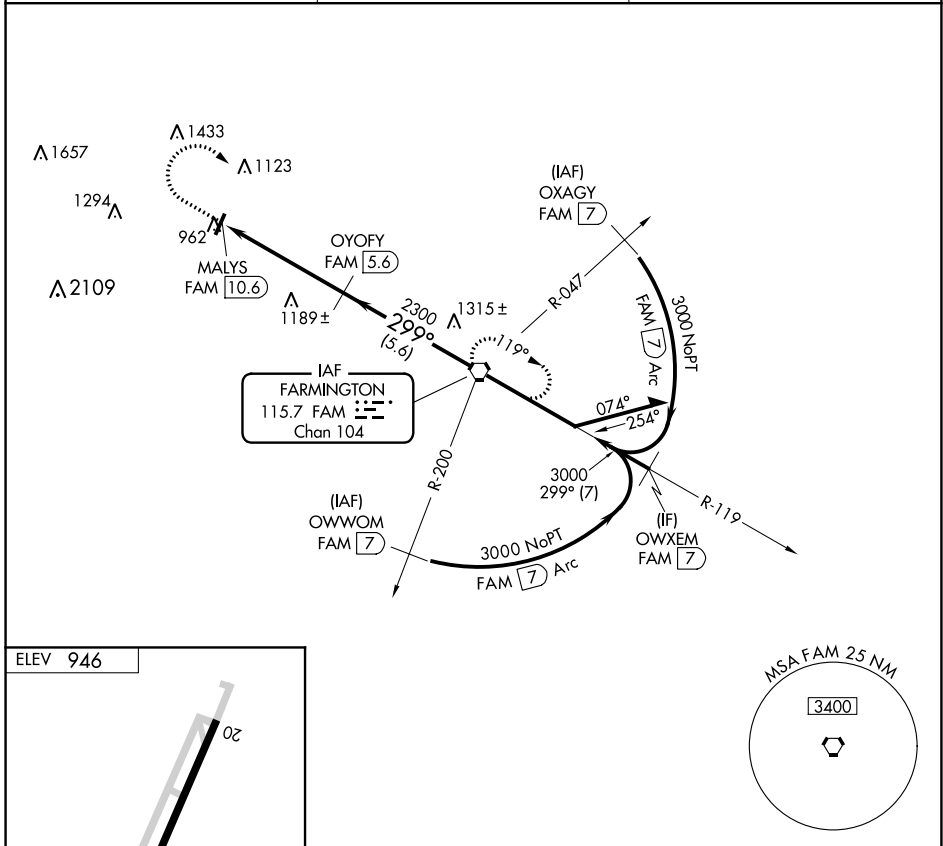
NC-3, 19 MAY 2022 to 16 JUN 2022

VORTAC FAM 115.7 Chan 104	APP CRS 299°	Rwy Idg TDZE Apt Elev N/A N/A 946
-----------------------------------------------	------------------------	-----------------------------------------------------------------------

VOR/DME-A
FARMINGTON RGNL (FAM)

<p>NA Circling to Rwy 20 NA at night. When local altimeter setting not received, use Sparta altimeter setting and increase all MDA 160 feet and Cat A visibility ¼ mile.</p>	<p>MISSED APPROACH: Climb to 2200 then climbing right turn to 3000 direct FAM VORTAC and hold.</p>
-------------------------------------------------------------------------------------------------------------------------------------------------------------------------------------	-----------------------------------------------------------------------------------------------------------

AWOS-3PT 119.275	KANSAS CITY CENTER 127.475 346.275	UNICOM 122.8 (CTAF) 0
----------------------------	----------------------------------------------	---------------------------------



2200	3000	FAM		
↑	↷	⬡		
MALYS FAM 10.6		OYOFY FAM 5.6	FAM VORTAC	
2300		3000	119°	Remain within 10 NM
5 NM		5.6 NM	299°	3000
CATEGORY	A	B	C	D
CIRCLING	1720-1 774 (800-1)	1720-1¼ 774 (800-1¼)	NA	

NC-3, 19 MAY 2022 to 16 JUN 2022

NC-3, 19 MAY 2022 to 16 JUN 2022