

WAAS CH 40104 W16A	APP CRS 169°	Rwy Idg 4797 TDZE 1319 Apt Elev 1319
--	------------------------	---

RNAV (GPS) RWY 16

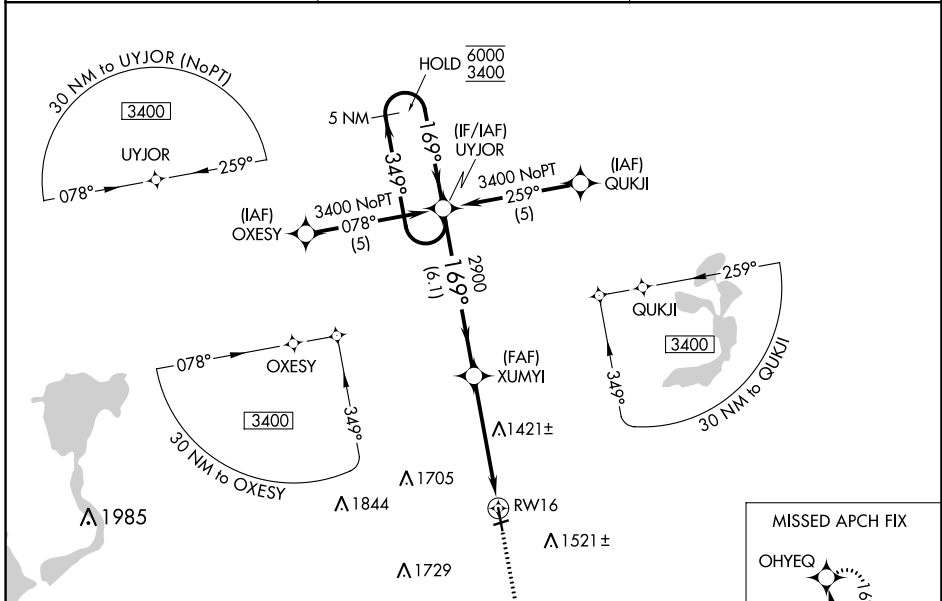
ESTHERVILLE MUNI (EST)

RNP APCH.

⚠ Circling NA to Rwy 6 and 24. Baro-VNAV and VDP NA when using Jackson altimeter setting. For uncompensated Baro-VNAV systems, LNAV/VNAV NA below -17°C or above 54°C. When local altimeter setting not received, use Jackson altimeter setting and increase all DA/MDA 60 feet.

MISSED APPROACH: Climb to 3400 direct OHYEQ and hold.

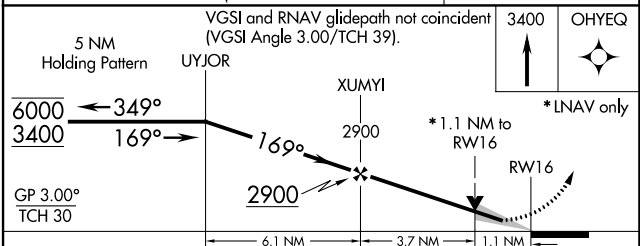
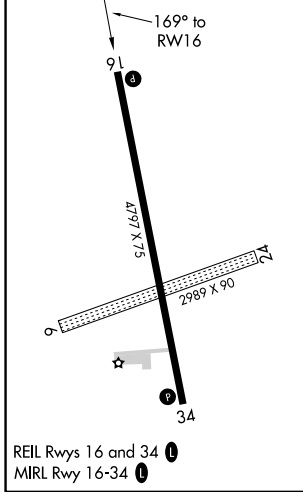
ASOS 121.425	MINNEAPOLIS CENTER 127.75 257.7	UNICOM 122.975 (CTAF) 0
------------------------	---	-----------------------------------



NC-3, 22 FEB 2024 to 21 MAR 2024

NC-3, 22 FEB 2024 to 21 MAR 2024

ELEV 1319	TDZE 1319
-----------	-----------



CATEGORY	A	B	C	D
LPV DA	1569-1	250 (300-1)		NA
LNAV/VNAV DA	1608-1	289 (300-1)		NA
LNAV MDA	1720-1	401 (500-1)		NA
C CIRCLING	1720-1 401 (500-1)	1840-1 521 (600-1)		NA

WAAS CH 82304 W34A	APP CRS 349°	Rwy Idg 4797 TDZE 1319 Apt Elev 1319
--	------------------------	---

RNAV (GPS) RWY 34

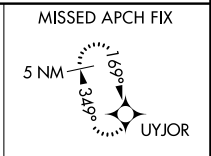
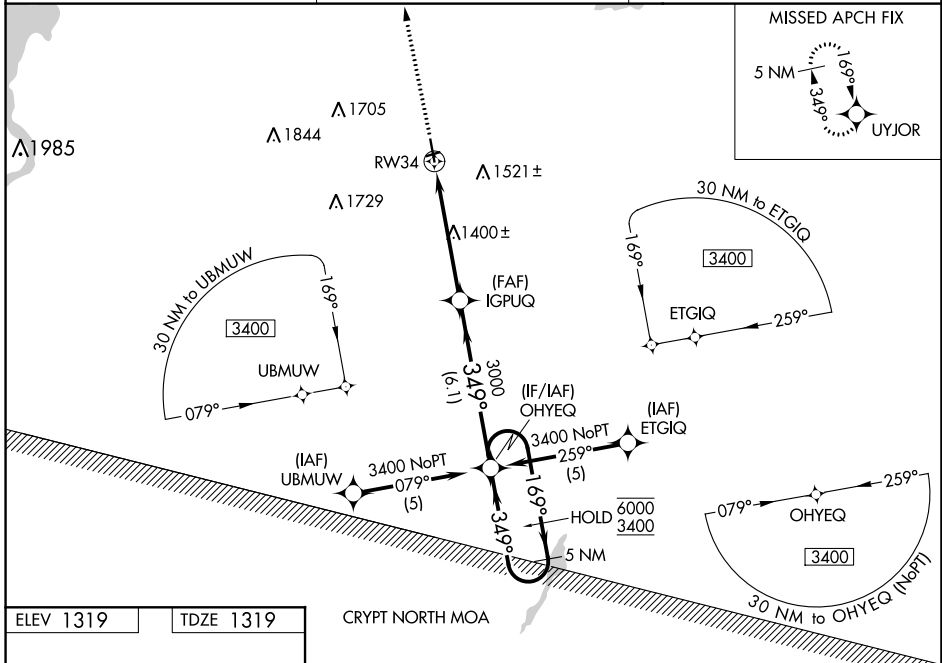
ESTHERVILLE MUNI (EST)

RNP APCH.

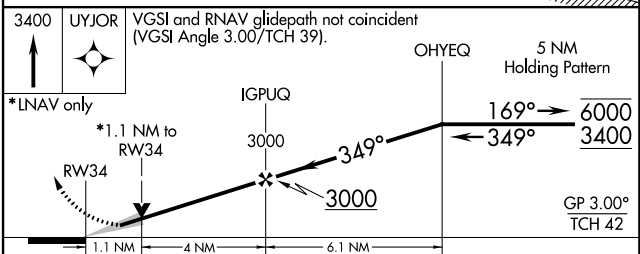
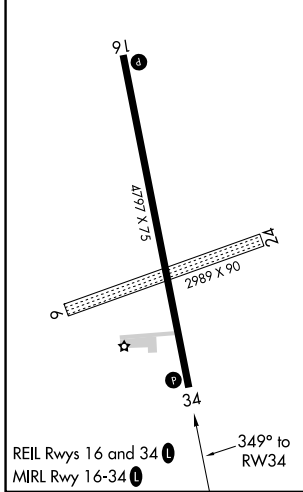
⚠ Circling NA to Rwy 6 and 24. Baro-VNAV and VDP NA when using Jackson altimeter setting. For uncompensated Baro-VNAV systems, LNAV/VNAV NA below -17°C or above 54°C. When local altimeter not received, use Jackson altimeter setting and increase all DA/MDA 60 feet.

MISSED APPROACH: Climb to 3400 direct UYJOR and hold.

ASOS 121.425	MINNEAPOLIS CENTER 127.75 257.7	UNICOM 122.975 (CTAF) 0
------------------------	---	--



ELEV 1319	TDZE 1319
-----------	-----------



CATEGORY	A	B	C	D
LPV DA	1569-1	250 (300-1)		NA
LNAV/VNAV DA	1629-1	310 (400-1)		NA
LNAV MDA	1700-1	381 (400-1)		NA
C CIRCLING	1720-1 401 (500-1)	1840-1 521 (600-1)		NA

NC-3, 22 FEB 2024 to 21 MAR 2024

NC-3, 22 FEB 2024 to 21 MAR 2024

INSTRUMENT APPROACH PROCEDURE CHARTS

A IFR ALTERNATE AIRPORT MINIMUMS

Pilots must review the IFR Alternate Minimums Notes to determine alternate airport suitability.

ANA designation on the approach chart means that pilots may not use that approach as an alternate due to unmonitored facility, absence of weather reporting service, or lack of adequate navigation coverage. Approaches with the **A**NA designation are not listed in this section. **A** designation on the approach chart indicates that the approach procedure has non-standard minimums (for aircraft other than helicopters) or restrictions (for all users) for its use as an alternate.

Alternate Minima (ref: 14 CFR 91.169)

	Precision Approach	Non-Precision Approach
Standard	600-2	800-2
A Non-Standard or restrictions	As indicated below	As indicated below
Helicopters	For the selected approach: Ceiling: 200' above published ceiling Visibility: the greater of 1 SM visibility or the published visibility	
US Military (USA/USN/USAF)	See Service Regulations	

Note: For alternate airport flight planning purposes, precision approach operations include: ILS, PAR, and GLS, and Non-Precision approach operations include: NDB, VOR, LOC, TACAN, LDA, SDF, ASR, RNAV (GPS) and RNAV (RNP).

NAME ALTERNATE MINIMUMS

ALGONA, IA

ALGONA MUNI (AXA).....RNAV (GPS) Rwy 12
NA when local weather not available.

AMES, IA

AMES MUNI (AMW).....RNAV (GPS) Rwy 19
NA when local weather not available.

ANKENY, IA

ANKENY RGNL (IKV).....RNAV (GPS) Rwy 18
RNAV (GPS) Rwy 22
RNAV (GPS) Rwy 36

Category D, 900-2½.

ATLANTIC, IA

ATLANTIC MUNI (AIO).....RNAV (GPS) Rwy 2
RNAV (GPS) Rwy 20

NA when local weather not available.
Category C, 800-2½.

AUDUBON, IA

AUDUBON COUNTY (ADU).....RNAV (GPS) Rwy 32
NA when local weather not available.

BOONE, IA

BOONE MUNI (BNW).....RNAV (GPS) Rwy 15
RNAV (GPS) Rwy 33
NA when local weather not available.

NAME ALTERNATE MINIMUMS

BRANSON, MO

BRANSON (BBG).....RNAV (GPS) Rwy 14¹
RNAV (GPS) Rwy 32²

NA when local weather not available.

¹Category C, 800-2½; Category D, 800-2½.
²Category C, 1000-2½; Category D, 1000-3.

BURLINGTON, IA

SOUTHEAST IOWA
RGNL (BRL).....RNAV (GPS) Rwy 12
RNAV (GPS) Rwy 30
RNAV (GPS) Rwy 36
VOR Rwy 12
VOR Rwy 30

NA when local weather not available.

CAMDENTON, MO

CAMDENTON MEML-LAKE
RGNL (OZS).....RNAV (GPS) Rwy 15
RNAV (GPS) Rwy 33

NA when local weather not available.

NAME ALTERNATE MINIMUMS

CAPE GIRARDEAU, MO

CAPE GIRARDEAU
RGNL (CGI).....**ILS or LOC Rwy 10¹²**
LOC BC Rwy 28¹³
RNAV (GPS) Rwy 2³
RNAV (GPS) Rwy 10³
RNAV (GPS) Rwy 20³
RNAV (GPS) Rwy 28³

NA when local weather not available.

¹NA when control tower closed.

²LOC, Category D, 800-2¹/₄.

³Category D, 800-2¹/₄.

CARROLL, IA

ARTHUR
N NEU (CIN).....**RNAV (GPS) Rwy 13**
RNAV (GPS) Rwy 31

NA when local weather not available.

CEDAR RAPIDS, IA

THE EASTERN
IOWA (CID).....**ILS or LOC Rwy 9¹**
ILS or LOC Rwy 27¹²
RNAV (GPS) Rwy 9³
RNAV (GPS) Rwy 27³

NA when local weather not available.

¹NA when control tower closed.

²LOC, Category D, 800-2¹/₄.

³Category D, 800-2¹/₄.

CENTERVILLE, IA

CENTERVILLE
MUNI (TVK).....**RNAV (GPS) Rwy 16**
RNAV (GPS) Rwy 34

NA when local weather not available.

CHARITON, IA

CHARITON
MUNI (CNC).....**RNAV (GPS) Rwy 10**
RNAV (GPS) Rwy 17

NA when local weather not available.

CHARLES CITY, IA

NORTHEAST
IOWA RGNL (CCY).....**LOC Rwy 12**
RNAV (GPS) Rwy 12
RNAV (GPS) Rwy 30

NA when local weather not available.

CHEROKEE, IA

CHEROKEE COUNTY
RGNL (CKP).....**RNAV (GPS) Rwy 18**
Category C, 900-2¹/₄; Category D, 1000-3.

CLARINDA, IA

SCHENCK FLD (ICL).....**RNAV (GPS) Rwy 2**
RNAV (GPS) Rwy 20
Category C, 800-2¹/₄; Category D, 800-2¹/₄.

NAME ALTERNATE MINIMUMS

CLARION, IA

CLARION
MUNI (CAV).....**RNAV (GPS) Rwy 14**
RNAV (GPS) Rwy 32

NA when local weather not available.

CLINTON, IA

CLINTON MUNI (CWI).....**ILS or LOC Rwy 3**
RNAV (GPS) Rwy 3
RNAV (GPS) Rwy 14
RNAV (GPS) Rwy 21
RNAV (GPS) Rwy 32

NA when local weather not available.

CLINTON, MO

CLINTON
RGNL (GLY).....**RNAV (GPS) Rwy 4**
RNAV (GPS) Rwy 18
RNAV (GPS) Rwy 22
RNAV (GPS) Rwy 36

NA when local weather not available.

COLUMBIA, MO

COLUMBIA RGNL (COU).....**ILS or LOC Rwy 2¹**
RNAV (GPS) Rwy 2
RNAV (GPS) Rwy 13
RNAV (GPS) Rwy 20
RNAV (GPS) Rwy 31
VOR Rwy 13²
VOR Y Rwy 20
VOR Z Rwy 20

NA when local weather not available.

¹NA when control tower closed.

²Categories A, B, 1000-2; Categories C, D, 1000-3.

COUNCIL BLUFFS, IA

COUNCIL BLUFFS
MUNI (CBF).....**RNAV (GPS) Rwy 18**
RNAV (GPS) Rwy 36
VOR-A

NA when local weather not available.

CRESTON, IA

CRESTON MUNI (CSQ).....**RNAV (GPS) Rwy 16**
RNAV (GPS) Rwy 34

NA when local weather not available.

DAVENPORT, IA

DAVENPORT
MUNI (DVN).....**ILS or LOC Rwy 15**
RNAV (GPS) Rwy 3
RNAV (GPS) Rwy 15
RNAV (GPS) Rwy 21
RNAV (GPS) Rwy 33
VOR Rwy 3
VOR Rwy 21

NA when local weather not available.

22 FEB 2024 to 21 MAR 2024

22 FEB 2024 to 21 MAR 2024

NAME ALTERNATE MINIMUMS

DECORAH, IA

DECORAH MUNI (DEH).....RNAV (GPS) Rwy 11
RNAV (GPS) Rwy 29

NA when local weather not available.

DENISON, IA

DENISON MUNI (DNS).....RNAV (GPS) Rwy 12
RNAV (GPS) Rwy 30

NA when local weather not available.

Category C, 900-2½.

DES MOINES, IA

DES MOINES
INTL (DSM).....ILS or LOC Rwy 5¹
ILS or LOC Rwy 13¹
ILS or LOC Rwy 31²
RNAV (GPS) Rwy 5^{3,4}
RNAV (GPS) Rwy 13³
RNAV (GPS) Rwy 23^{3,4}
RNAV (GPS) Rwy 31³
VOR Rwy 23⁵

¹LOC, Category D, 900-2½.

²LOC, Category D, 900-2½; Category E, 900-2¼.

³Category D, 900-2½.

⁴NA when local weather not available.

⁵Category C, 800-2¼; Category D, 900-2½.

DUBUQUE, IA

DUBUQUE
RGNL (DBQ).....ILS or LOC Rwy 36^{1,2}
LOC Rwy 31^{1,3}
RNAV (GPS) Rwy 13
RNAV (GPS) Rwy 18³
RNAV (GPS) Rwy 31
RNAV (GPS) Rwy 36
VOR Rwy 13³
VOR Rwy 31⁴
VOR Rwy 36³

NA when local weather not available.

¹NA when control tower closed.

²LOC, Category D, 800-2¼.

³Category D, 800-2¼.

⁴Category C, 800-2¼; Category D, 800-2½.

ESTHERVILLE, IA

ESTHERVILLE
MUNI (EST).....RNAV (GPS) Rwy 16
RNAV (GPS) Rwy 34

NA when local weather not available.

FAIRFIELD, IA

FAIRFIELD MUNI (FFL).....RNAV (GPS) Rwy 18
RNAV (GPS) Rwy 36

NA when local weather not available.

FARMINGTON, MO

FARMINGTON
RGNL (FAM).....RNAV (GPS) Rwy 2
RNAV (GPS) Rwy 20

NA when local weather not available.

NAME ALTERNATE MINIMUMS

FOREST CITY, IA

FOREST CITY
MUNI (FXY).....RNAV (GPS) Rwy 15¹
RNAV (GPS) Rwy 33¹
VOR-A

NA when local weather not available.

¹Category C, 900-2½; Category D, 900-2¼.

FORT DODGE, IA

FORT DODGE
RGNL (FOD).....RNAV (GPS) Rwy 6
RNAV (GPS) Rwy 12
RNAV (GPS) Rwy 24
RNAV (GPS) Rwy 30

NA when local weather not available.

Category D, 1000-3.

FORT LEONARD WOOD, MO

WAYNESVILLE-ST ROBERT RGNL FORNEY
FLD (TBN).....ILS or LOC Rwy 15¹
RNAV (GPS) Rwy 15
RNAV (GPS) Rwy 33
VOR Rwy 15¹
VOR Rwy 33¹

NA when local weather not available.

¹NA when control tower closed.

FORT MADISON, IA

FORT MADISON
MUNI (FSW).....RNAV (GPS) Rwy 17¹
RNAV (GPS) Rwy 35¹
VOR/DME-A²

¹Category D, 800-2½.

²NA when local weather not available.

GRINNELL, IA

GRINNELL RGNL (GGI).....RNAV (GPS) Rwy 13
RNAV (GPS) Rwy 31
VOR/DME Rwy 31

NA when local weather not available.

HARRISONVILLE, MO

LAURENCE SMITH
MEML (LRY).....RNAV (GPS) Rwy 17
RNAV (GPS) Rwy 35

NA when local weather not available.

INDEPENDENCE, IA

JAMES H CONNELL FLD AT INDEPENDENCE
MUNI (IIB).....RNAV (GPS) Rwy 18
RNAV (GPS) Rwy 36

NA when local weather not available.

Category D, 1500-3.

22 FEB 2024 to 21 MAR 2024

22 FEB 2024 to 21 MAR 2024

NAME ALTERNATE MINIMUMS

IOWA CITY, IA

IOWA CITY
MUNI (IOW).....RNAV (GPS) Rwy 25¹
RNAV (GPS) Rwy 30¹
VOR-A

NA when local weather not available.

¹Category C, 800-2¼; Category D, 800-2½.**IOWA FALLS, IA**

IOWA FALLS
MUNI (IFA).....RNAV (GPS) Rwy 13
RNAV (GPS) Rwy 31

NA when local weather not available.

JEFFERSON CITY, MO

JEFFERSON CITY
MEML (JEF).....ILS or LOC Rwy 30¹
RNAV (GPS) Rwy 12²
RNAV (GPS) Rwy 30²

NA when local weather not available.

¹ILS, Categories A, B, 800-2; Category C, 800-2¼; Category D, 1100-3; LOC, Category C, 800-2¼; Category D, 1100-3.²Category C, 800-2¼; Category D, 1100-3.**JOPLIN, MO**

JOPLIN RGNL (JLN).....ILS or LOC Rwy 13¹
ILS or LOC Rwy 18²

¹NA when tower closed.²NA when control tower closed.**KAISER/LAKE OZARK, MO**

LEE C FINE
MEML (AIZ).....RNAV (GPS) Rwy 4
RNAV (GPS) Rwy 22
VOR Rwy 4

NA when local weather not available.

KANSAS CITY, MO

CHARLES B WHEELER
DOWNTOWN (MKC).....ILS or LOC Rwy 4¹
ILS or LOC Rwy 19²
RNAV (GPS) Rwy 4³
RNAV (GPS) Y Rwy 19³

¹LOC, Categories A, B, 900-2; Categories C, D, 900-2½.²LOC, Category D, 800-2½.³Category D, 800-2½.**KEOKUK, IA**

KEOKUK MUNI (EOK).....RNAV (GPS) Rwy 8
RNAV (GPS) Rwy 14
RNAV (GPS) Rwy 26
RNAV (GPS) Rwy 32

NA when local weather not available.

KIRKSVILLE, MO

KIRKSVILLE RGNL (IRK).....ILS or LOC Rwy 36

NA when local weather not available.

NAME ALTERNATE MINIMUMS

KNOXVILLE, IA

KNOXVILLE
MUNI (OXV).....RNAV (GPS) Rwy 15
RNAV (GPS) Rwy 33

NA when local weather not available.

LAMONI, IA

LAMONI MUNI (LWD).....RNAV (GPS) Rwy 18
RNAV (GPS) Rwy 36

NA when local weather not available.

LE MARS, IA

LE MARS MUNI (LRJ).....RNAV (GPS) Rwy 18
RNAV (GPS) Rwy 36

NA when local weather not available.

LEE'S SUMMIT, MO

LEE'S SUMMIT
MUNI (LXT).....RNAV (GPS) Rwy 11
RNAV (GPS) Rwy 18¹
RNAV (GPS) Rwy 29¹
RNAV (GPS) Rwy 36¹
VOR-A¹

Category C, 800-2¼; Category D, 800-2½.

¹NA when local weather not available.**MALDEN, MO**

MALDEN RGNL (MAW).....RNAV (GPS) Rwy 14
RNAV (GPS) Rwy 18
RNAV (GPS) Rwy 32
RNAV (GPS) Rwy 36

NA when local weather not available.

MARSHALLTOWN, IA

MARSHALLTOWN
MUNI (MIW).....RNAV (GPS) Rwy 13
RNAV (GPS) Rwy 31

NA when local weather not available.

Category D, 900-2¼.

MASON CITY, IA

MASON CITY
MUNI (MCW).....ILS or LOC Rwy 36
RNAV (GPS) Rwy 18
RNAV (GPS) Rwy 30
RNAV (GPS) Rwy 36
VOR Rwy 36

NA when local weather not available.

MAURICE, IA

SIOUX COUNTY
RGNL (SXX).....RNAV (GPS) Rwy 17
RNAV (GPS) Rwy 35

NA when local weather not available.

Category D, 800-2¼.

NAME ALTERNATE MINIMUMS

MOBERLY, MOOMAR N
BRADLEY (MBY).....RNAV (GPS) Rwy 13
RNAV (GPS) Rwy 31

NA when local weather not available.

MONETT, MOMONETT RGNL (HFJ).....RNAV (GPS) Rwy 18
RNAV (GPS) Rwy 36

NA when local weather not available.

Category D, 800-2½.

MONTICELLO, IAMONTICELLO
RGNL (MXO).....RNAV (GPS) Rwy 15
RNAV (GPS) Rwy 33

NA when local weather not available.

MOSBY, MOMIDWEST NTL AIR
CENTER (GPH).....RNAV (GPS) Rwy 36

NA when local weather not available.

MOUNT PLEASANT, IAMOUNT PLEASANT
MUNI (MPZ).....RNAV (GPS) Rwy 15¹
RNAV (GPS) Rwy 33

NA when local weather not available.

¹Categories A, B, C, 800-2¼.**MUSCATINE, IA**MUSCATINE
MUNI (MUT).....RNAV (GPS) Rwy 6¹
RNAV (GPS) Rwy 12
RNAV (GPS) Rwy 24²
RNAV (GPS) Rwy 30

NA when local weather not available.

¹Categories A, B, C, 800-2½; Category D, 1000-3.²Category D, 1000-3.**NEOSHO, MO**NEOSHO HUGH
ROBINSON (EOS).....RNAV (GPS) Rwy 1
RNAV (GPS) Rwy 19

NA when local weather not available.

NEWTON, IANEWTON MUNI-EARL JOHNSON
FLD (TNU).....RNAV (GPS) Rwy 14
RNAV (GPS) Rwy 32
VOR Rwy 14

NA when local weather not available.

OELWEIN, IAOELWEIN
MUNI (OLZ).....RNAV (GPS) Rwy 13

Category D, 800-2¼.

NAME ALTERNATE MINIMUMS

OSCEOLA, IAOSCEOLA
MUNI (I75).....RNAV (GPS) Rwy 18
RNAV (GPS) Rwy 36

NA when local weather not available.

OSKALOOSA, IAOSKALOOSA
MUNI (OOA).....RNAV (GPS) Rwy 13
RNAV (GPS) Rwy 31

NA when local weather not available.

OTTUMWA, IAOTTUMWA
RGNL (OTM).....ILS or LOC Rwy 31
LOC BC Rwy 13
RNAV (GPS) Rwy 13
RNAV (GPS) Rwy 31
VOR Rwy 13

NA when local weather not available.

PELLA, IAPELLA MUNI (PEA).....NDB Rwy 34
RNAV (GPS) Rwy 16
RNAV (GPS) Rwy 34

NA when local weather not available.

PERRY, IAPERRY MUNI (PRO).....RNAV (GPS) Rwy 14
RNAV (GPS) Rwy 32

NA when local weather not available.

Category D, 900-2¼.

PERRYVILLE, MOPERRYVILLE
RGNL (PCD).....RNAV (GPS) Rwy 2¹
RNAV (GPS) Rwy 20²
VOR-A²

NA when local weather not available.

¹Categories A, B, C, D, 900-3.²Category C, 900-2¼; Category D, 900-3.**POPLAR BLUFF, MO**POPLAR BLUFF RGNL
BUSINESS (POF).....RNAV (GPS) Rwy 18
RNAV (GPS) Rwy 36

NA when local weather not available.

RED OAK, IARED OAK
MUNI (RDK).....RNAV (GPS) Rwy 5¹
RNAV (GPS) Rwy 17

NA when local weather not available.

¹Categories A, B, 800-2¼.**ROLLA-VICHY, MO**ROLLA NTL (VIH).....RNAV (GPS) Rwy 4
VOR Rwy 22
VOR/DME Rwy 4

NA when local weather not available.

NAME ALTERNATE MINIMUMS

ST. CHARLES, MO

ST CHARLES COUNTY RGNL/
SMARTT FLD (SET)..... **RNAV (GPS) Rwy 18**
VOR Rwy 18

NA when local weather not available.
Category C, 800-2¼.

ST. JOSEPH, MO

ROSECRANS
MEML (STJ)..... **ILS or LOC Rwy 35¹²**
LOC BC Rwy 17¹³
RNAV (GPS) Rwy 13⁴⁵
RNAV (GPS) Rwy 17⁴⁶
RNAV (GPS) Rwy 31³⁴
RNAV (GPS) Rwy 35⁴⁶
VOR or TACAN Rwy 17⁶
VOR or TACAN Rwy 35⁶

¹NA when control tower closed.
²LOC, Category C, 800-2¼; Category D, 900-2¾;
Category E, 1000-3.
³Category C, 800-2¼; Category D, 900-2¾.
⁴NA when local weather not available.
⁵Category C, 800-2¼; Category D, 900-2¾.
⁶Category C, 800-2¼; Category D, 900-2¾;
Category E, 1000-3.

ST. LOUIS, MO

SPIRIT OF
ST. LOUIS (SUS)..... **ILS or LOC Rwy 8R¹**
ILS or LOC Rwy 26L²³⁴
RNAV (GPS) Rwy 8L²
RNAV (GPS) Rwy 8R⁵
RNAV (GPS) Rwy 26L²⁵
RNAV (GPS) Rwy 26R²

¹ILS, LOC, Category D, 900-3.
²NA when local weather not available.
³NA when control tower closed.
⁴LOC, Category D, 900-3.
⁵Category D, 900-3.

SEDALIA, MO

SEDALIA
RGNL (DMO)..... **RNAV (GPS) Rwy 18**
RNAV (GPS) Rwy 36

NA when local weather not available.
Category D, 800-2¼.

SHELDON, IA

SHELDON
RGNL (SHL)..... **RNAV (GPS) Rwy 15**
RNAV (GPS) Rwy 33

NA when local weather not available.

SHENANDOAH, IA

SHENANDOAH
MUNI (SDA)..... **RNAV (GPS) Rwy 4**
VOR/DME Rwy 12

NA when local weather not available.

NAME ALTERNATE MINIMUMS

SIOUX CITY, IA

SIOUX GATEWAY/BRIG GENERAL BUD
DAY FLD (SUX)..... **ILS or LOC Rwy 13¹²**
ILS or LOC Rwy 31¹³
RNAV (GPS) Rwy 13⁴
RNAV (GPS) Rwy 18⁵
RNAV (GPS) Rwy 31⁴
RNAV (GPS) Rwy 36⁵

NA when local weather not available.
¹NA when control tower closed.
²LOC, Category D, 800-2¼; Category E, 900-3.
³LOC, Category D, 800-2¼; Category E, 900-3.
⁴Category D, 800-2¼; Category E, 1000-3.
⁵Category D, 800-2¼.

SPENCER, IA

SPENCER
MUNI (SPW)..... **RNAV (GPS) Rwy 12¹**
RNAV (GPS) Rwy 18
RNAV (GPS) Rwy 30¹
RNAV (GPS) Rwy 36
VOR Rwy 30¹

NA when local weather not available.
¹Category C, 800-2¼, Category D, 800-2¼.

SPRINGFIELD, MO

SPRINGFIELD-BRANSON
NTL (SGF)..... **ILS or LOC Rwy 2¹**
ILS or LOC Rwy 14⁴
RNAV (GPS) Rwy 2²
RNAV (GPS) Rwy 20²
RNAV (GPS) Rwy 32²
VOR/DME or TACAN Rwy 2³
VOR or TACAN Rwy 20³

¹ILS, Category D, 700-2, Category E, 900-3. LOC,
Category E, 900-3.
²NA when local weather not available.
³Category E, 800-2¼.
⁴Category D, 700-2.

VINTON, IA

VINTON VETERANS MEML
AIRPARK (VTI)..... **RNAV (GPS) Rwy 9**
RNAV (GPS) Rwy 27

NA when local weather not available.

WARRENSBURG, MO

SKYHAVEN (RCM)..... **RNAV (GPS) Rwy 1**
RNAV (GPS) Rwy 19
VOR-A

NA when local weather not available.

WASHINGTON, IA

WASHINGTON
MUNI (AWG)..... **RNAV (GPS) Rwy 13**
RNAV (GPS) Rwy 18
RNAV (GPS) Rwy 31
RNAV (GPS) Rwy 36
VOR Rwy 36

Category C, 800-2¼.

22 FEB 2024 to 21 MAR 2024

22 FEB 2024 to 21 MAR 2024

24025

NAME ALTERNATE MINIMUMS

NAME ALTERNATE MINIMUMS

WASHINGTON, MO

WASHINGTON

RGNL (FYG).....RNAV (GPS) Rwy 15
RNAV (GPS) Rwy 33
VOR-A

NA when local weather not available.
Category C, 1100-3.

WATERLOO, IA

WATERLOO

RGNL (ALO).....ILS or LOC Rwy 12¹²
LOC BC Rwy 30¹²
RNAV (GPS) Rwy 12³
RNAV (GPS) Rwy 18³
RNAV (GPS) Rwy 30³
RNAV (GPS) Rwy 36³
VOR Rwy 12²³
VOR Rwy 18³⁴

¹NA when control tower closed.
²LOC, Category D, 800-2¼.
³Category D, 800-2¼.
⁴NA when local weather not available.

WEBSTER CITY, IA

WEBSTER CITY

MUNI (EBS).....RNAV (GPS) Rwy 14
RNAV (GPS) Rwy 32

NA when local weather not available.

WEST PLAINS, MO

WEST PLAINS

RGNL (UNO).....RNAV (GPS) Rwy 18
RNAV (GPS) Rwy 36

NA when local weather not available.

22 FEB 2024 to 21 MAR 2024

22 FEB 2024 to 21 MAR 2024

24025

M7