

WAAS CH <b>82533</b> <b>W21A</b>	APP CRS <b>219°</b>	Rwy Idg TDZE Apt Elev	<b>4000</b> <b>963</b> <b>963</b>
--	------------------------	-----------------------------	---

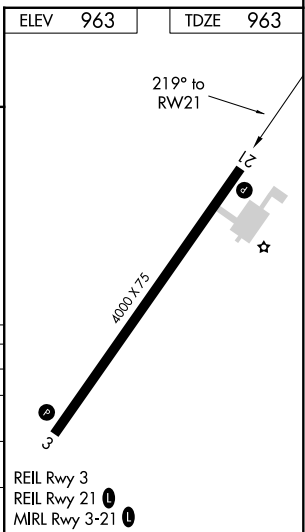
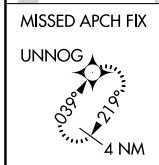
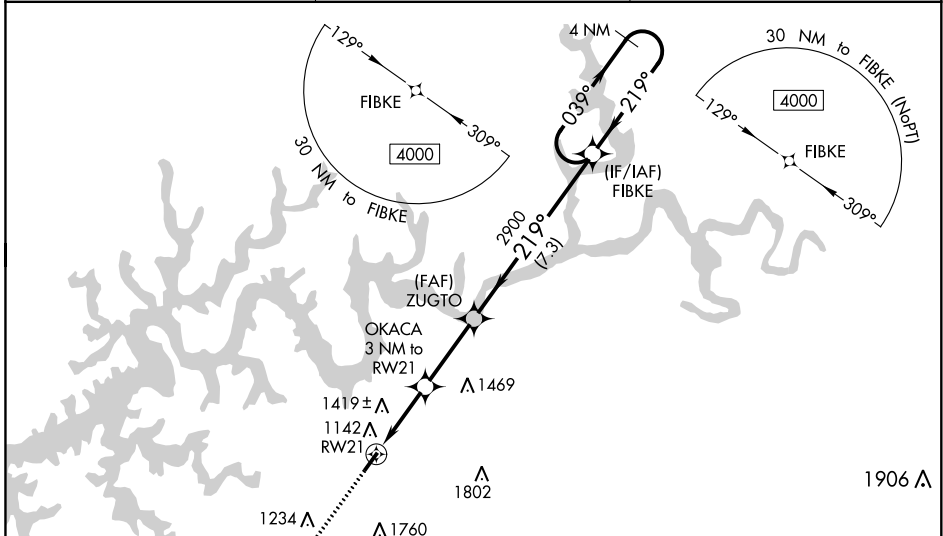
# RNAV (GPS) RWY 21

WAYNE COUNTY (EKQ)

**⚠** Baro-VNAV NA when using Somerset altimeter setting. For uncompensated Baro-VNAV systems, LNAV/VNAV NA below -16°C (4°F) or above 54°C (130°F). DME/DME RNP-0.3 NA. VDP NA with Somerset altimeter setting. Helicopter visibility reduction below ¼ SM NA. When local altimeter setting not received, use Somerset altimeter setting and increase all DA 44 feet, and all MDA 60 feet; increase LPV all Cats visibility ½ mile and LNAV/VNAV all Cats visibility ½ mile. Night landing: Rwy 3 NA.

**MISSED APPROACH:**  
Climb to 4000 direct UNNOG and hold.

AWOS-3PT <b>118.825</b>	INDIANAPOLIS CENTER <b>124.625 371.925</b>	UNICOM <b>122.8 (CTAF) 0</b>
----------------------------	---	---------------------------------



4000	UNNOG	*LNAV only.	OKACA 3 NM to RW21	ZUGTO	FIBKE	4 NM Holding Pattern
↑	✧					
		*1.8 NM to RW21	2900	219°	039°	4000
			1940*	2900	← 219°	
		1.8 NM	1.2 NM	3 NM	7.3 NM	
CATEGORY		A	B	C	D	
LPV DA		1257-1	294 (300-1)			NA
LNAV/VNAV DA		1666-2½	703 (800-2½)			NA
LNAV MDA		1580-1	617 (700-1)			NA
CIRCLING		1780-1¼ 817 (900-1¼)	1840-1¼ 877 (900-1¼)			NA

SE-1, 27 JAN 2022 to 24 FEB 2022

SE-1, 27 JAN 2022 to 24 FEB 2022

WAAS CH <b>78233</b> <b>W03A</b>	APP CRS <b>039°</b>	Rwy Idg TDZE Apt Elev	<b>4000</b> <b>961</b> <b>963</b>
--	------------------------	-----------------------------	---

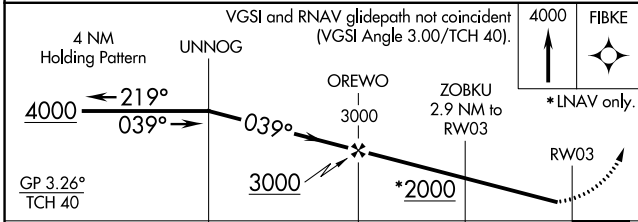
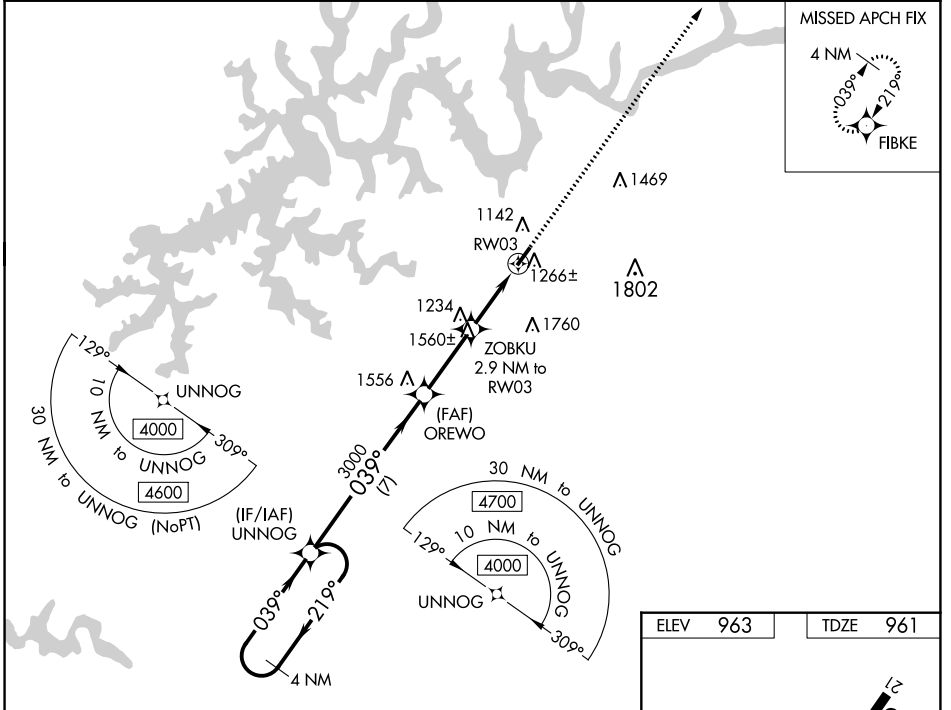
# RNAV (GPS) RWY 3

WAYNE COUNTY (EKQ)

**⚠** Baro-VNAV NA when using Somerset altimeter setting. For uncompensated Baro-VNAV systems, LNAV/VNAV NA below -16°C (4°F) or above 54°C (130°F). DME/DME RNP-0.3 NA. Helicopter visibility reduction below 1 SM NA. When local altimeter setting not received, use Somerset altimeter setting and increase all DA 44 feet and all MDA 60 feet and increase LNAV/VNAV all Cats visibility ¼ mile. Rwy 3 Straight-in and Circling minimums NA at night.

**MISSED APPROACH:**  
Climb to 4000 direct FIBKE and hold.

AWOS-3PT <b>118.825</b>	INDIANAPOLIS CENTER <b>124.625 371.925</b>	UNICOM <b>122.8 (CTAF)</b>
----------------------------	---	-------------------------------



ELEV	963	TDZE	961
------	-----	------	-----

The simplified diagram shows the glide path from 4000 at UNNOG to 400 at RWY 3, with a 4000 x 75 ft width. Key altitudes and distances are marked: 4000, 3000, 2000, and 400. Distances of 7 NM and 2.9 NM are also indicated.

CATEGORY	A	B	C	D
LPV DA	1233-1	272 (300-1)		NA
LNAV/VNAV DA	1410-1¾	449 (500-1¾)		NA
LNAV MDA	1520-1	559 (600-1)		NA
<b>C</b> CIRCLING	1780-1¼ 817 (900-1¼)	1840-1¼ 877 (900-1¼)		NA

SE-1, 27 JAN 2022 to 24 FEB 2022

SE-1, 27 JAN 2022 to 24 FEB 2022