

LOC/DME I-HEW 110.5 Chan 42	APP CRS 168°	Rwy Idg TDZE 152 Apt Elev 152	6002
---	------------------------	---	-------------

LOC RWY 17R

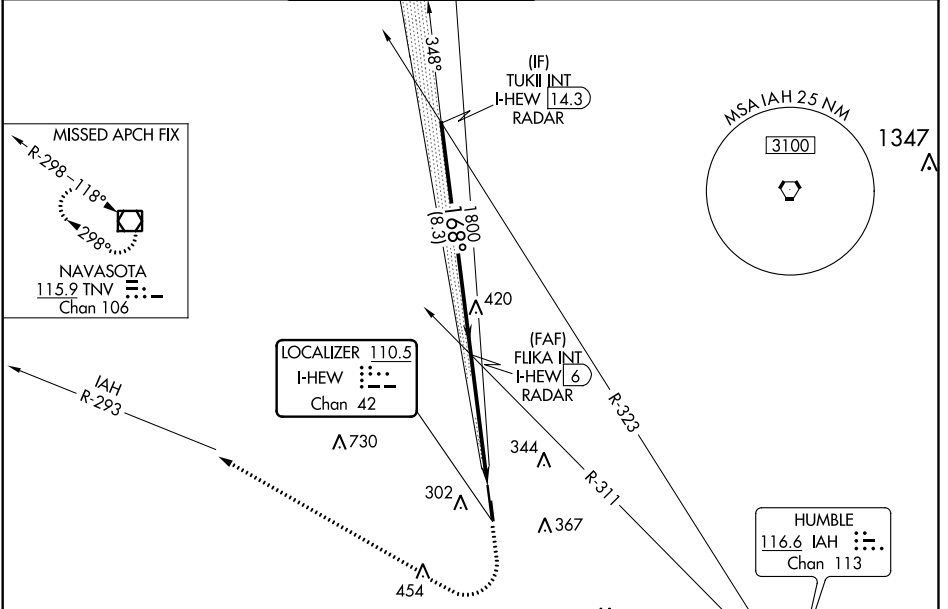
DAVID WAYNE HOOKS MEMORIAL (DWH)

RADAR required for procedure entry.

MISSED APPROACH: Climb to 1200 then climbing right turn to 2000 on heading 325° and IAH VORTAC R-293 to TNV VOR/DME and hold.

When local altimeter setting not received, use George Bush Intercontinental/Houston altimeter setting and increase all MDA 40 feet; increase S-LOC 17R Cats C/D visibility 1/8 mile. Circling NA to Rwy 17W and 35W. Rwy 17R helicopter visibility reduction below 3/4 SM NA.

ATIS 128.375	HOUSTON APP CON 119.7 281.4	HOOKS TOWER* 127.4 354.1 EAST 118.4 (CTAF) 354.1 WEST	GND CON 121.8 239.0	CLNC DEL 119.45	UNICOM 122.95
------------------------	---------------------------------------	---	-------------------------------	---------------------------	-------------------------



SC-5, 30 JAN 2020 to 27 FEB 2020

SC-5, 30 JAN 2020 to 27 FEB 2020

ELEV 152	D	TDZE 152
-----------------	----------	-----------------

168° 4.9 NM from FAF

238' A

191' A

7009 X 100

17L

35W

189±' A

35L

35R

282' A

FAF to MAP 4.9NM

Knots	60	90	120	150	180
Min:Sec	4:54	3:16	2:27	1:58	1:38

TUKII INT I-HEW 14.3 RADAR	1200	2000	IAH R-293	TNV
2000	↑	hdg 325°	Visual Segment - Obstacles.	
FLIKA INT I-HEW 6 RADAR				
168°				
1800				
I-HEW 1.1				
8.3 NM		4.9 NM		
CATEGORY	A	B	C	D
S-LOC 17R	640-1	488 (500-1)	640-1 1/8	488 (500-1 1/8)
CIRCLING	640-1 488 (500-1)	660-1 508 (600-1)	680-1 1/2 528 (600-1 1/2)	760-2 608 (700-2)

APP CRS	Rwy Idg	6002
168°	TDZE	152
	Apt Elev	152

RNAV (GPS) RWY 17R

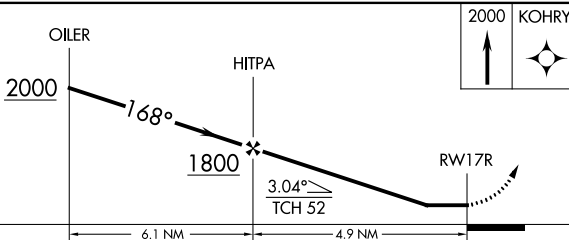
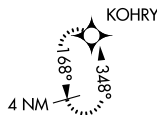
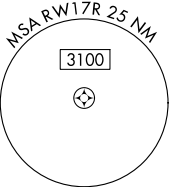
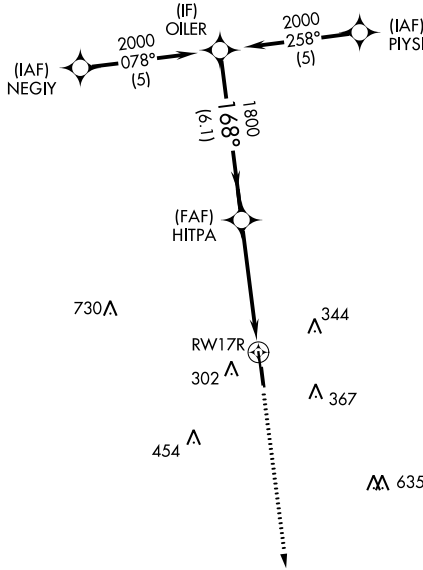
DAVID WAYNE HOOKS MEMORIAL (DWH)

RNP APCH.

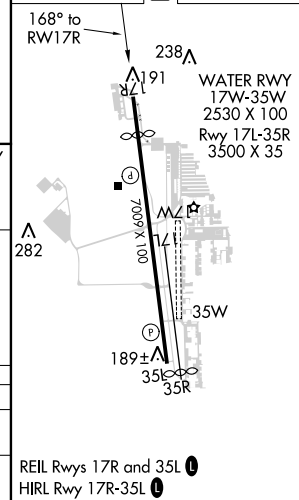
▽ When local altimeter setting not received, use George Bush Intercontinental/Houston altimeter setting and increase all MDA 40 feet and LNAV Cat C/D visibility 1/8 mile. Circling NA to Rwy 17W and 35W. Rwy 17R helicopter visibility reduction below 3/4 SM NA.

MISSED APPROACH:
Climb to 2000 direct KOHRY and hold.

ATIS 128.375	HOUSTON APP CON 119.7 281.4	HOOKS TOWER★ 127.4 354.1 EAST 118.4 (CTAF) 0 354.1 WEST	GND CON 121.8 239.0	CLNC DEL 119.45	UNICOM 122.95
------------------------	---------------------------------------	---	-------------------------------	---------------------------	-------------------------



ELEV 152	D TDZE 152
----------	-------------------



CATEGORY	A	B	C	D
LNAV MDA	640-1	488 (500-1)	640-1 3/8	488 (500-1 3/8)
C CIRCLING	640-1 488 (500-1)	660-1 508 (600-1)	680-1 1/2 528 (600-1 1/2)	760-2 608 (700-2)

REIL Rwy 17R and 35L **Ⓛ**
HIRL Rwy 17R-35L **Ⓛ**

SC-5, 30 JAN 2020 to 27 FEB 2020

SC-5, 30 JAN 2020 to 27 FEB 2020

WAAS CH 45603 W35A	APP CRS 348°	Rwy ldg 6700 TDZE 152 Apt Elev 152
--	------------------------	---

RNAV (GPS) RWY 35L

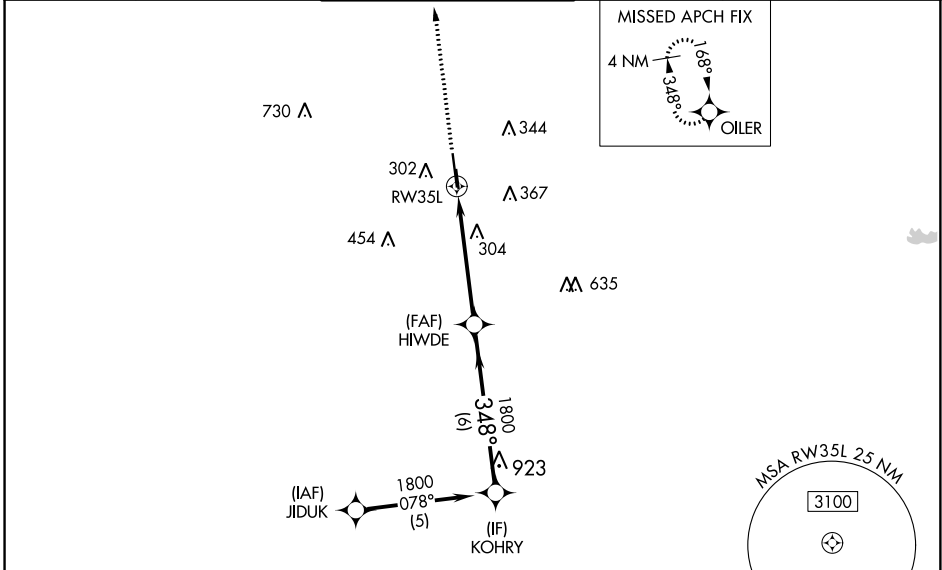
DAVID WAYNE HOOKS MEMORIAL (DWH)

RNP APCH.

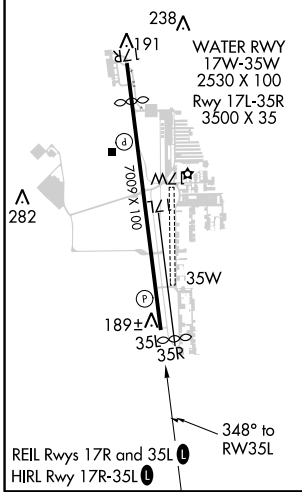
⚠ Baro-VNAV and VDP NA when using George Bush Intercontinental/Houston altimeter setting. For uncompensated Baro-VNAV systems, LNAV/VNAV NA below -4°C (25°F) or above 54°C (130°F). When local altimeter setting not received, use George Bush Intercontinental/Houston altimeter setting and increase all DA 36 feet and all MDA 40 feet, increase LPV and LNAV/VNAV visibility all Cats 1/8 mile, LNAV visibility Cats C/D 1/4 mile. Rwy 35L helicopter visibility reduction below 3/4 SM NA. Circling NA to Rwys 17W and 35W.

MISSED APPROACH:
Climb to 2000 direct OILER and hold.

ATIS 128.375	HOUSTON APP CON 119.7 281.4	HOOKS TOWER* 127.4 354.1 (EAST) 118.4 (CTAF) 354.1 (WEST)	GND CON 121.8 239.0	CLNC DEL 119.45	UNICOM 122.95
------------------------	---------------------------------------	---	-------------------------------	---------------------------	-------------------------



ELEV 152	D	TDZE 152
----------	----------	----------



2000	OILER	VGSi and RNAV glidepath not coincident (VGSi Angle 3.00/TCH 41).			
*LNAV only.	*1.2 NM to RW35L	HIWDE 1800	KOHRY 1800		
RW35L		348°	1800		
1.2 NM		3.8 NM	6 NM		GP 3.00° TCH 45
CATEGORY	A	B	C	D	
LPV DA		451-1	299 (300-1)		
LNAV/ VNAV DA		552-1 3/8		400 (400-1 1/8)	
LNAV MDA	560-1 408 (500-1)		560-1 1/8		408 (500-1 1/8)
C CIRCLING	640-1 488 (500-1)	660-1 508 (600-1)	680-1 1/2 528 (600-1 1/2)		760-2 608 (700-2)

SC-5, 30 JAN 2020 to 27 FEB 2020

SC-5, 30 JAN 2020 to 27 FEB 2020