

DUGWAY PROVING GROUND, UTAH

**RNAV (GPS) RWY 12**

24025

[USA]

MICHAEL AAF (KDPG)

- ▼** ARCH CRS **122°** Rwy ldg **10,000**  
TDZE **4344**  
Aprt Elev **4351**
- ▲** NA \* Obtain local altimeter setting on CIAF, when not received, use Wendover altimeter setting.  
DME/DME RNP-0.3 NA.

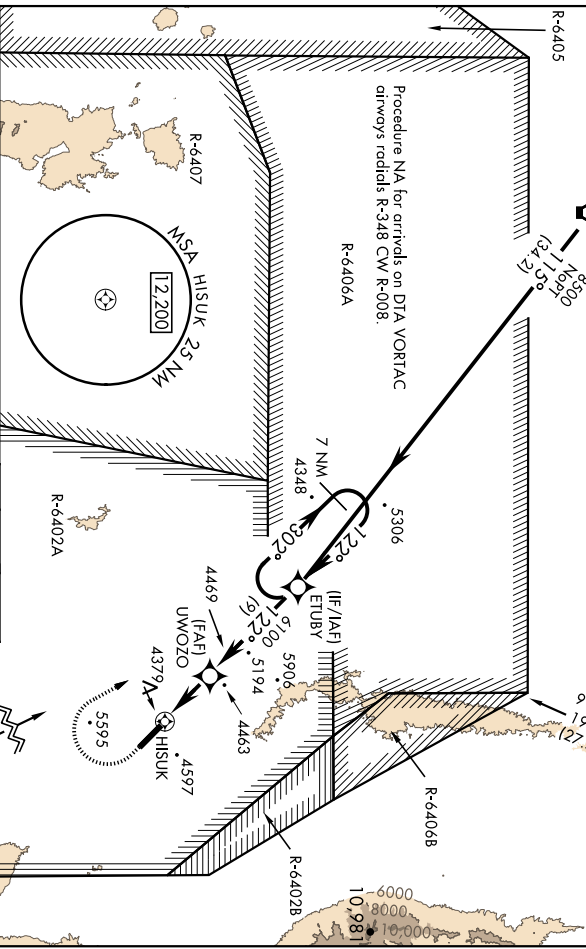
MISSED APPROACH: Climb to 4760 then climbing right turn to 8500 direct ETUBY and hold, continue climb in hold to 8500.

CLOVER CON  
**134.1 363.5**

CIAF **0 126.2 270.3**

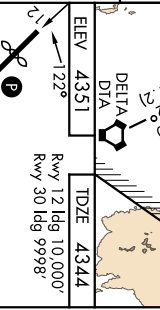
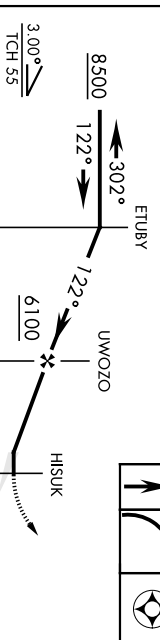
Procedure lies within R-6402A, PPR	Knobs	60	120	180	240	300	360
(IAF) BONNEVILLE BVI	V/Y/(Ipm)	337	674	1011	1348	1685	2022
Min climb of 337 ft/NM to 6000 - Controlling Obstacle Unk							

6894 .

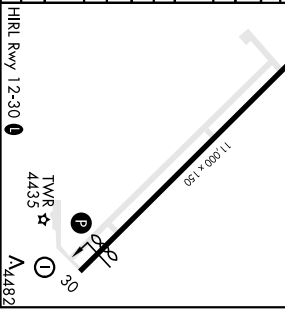


VGSI and descent angles not coincident

VDP NA with Wendover altimeter setting minimums:



CATEGORY	A	B	C	D	E
INNAV MDA	4640-1 294 (300-1)	5140-2 1/2 794 (800-2 1/2)	5880-3	NA	NA
<b>ⓐ</b> CIRCLING	4800-1 4920-1 449 (500-1) 569 (600-1)	5160-2 1/2 5880-3 1529 (1600-3)	NA	NA	NA
BELOW MINIMA REQUIRES MISSED APPROACH CLIMB GRADIENT OF 337 FT/NM					
INNAV MDA	NA	4640-1 294 (300-1)	NA	NA	NA
* WENDOVER ALTIMETER SETTING MINIMUMS					
INNAV MDA	4800-1 454 (500-1)	5300-3 924 (1000-3)	6040-3	NA	NA
<b>ⓐ</b> CIRCLING	4960-1 5080-1 609 (700-1) 729 (800-1)	5320-3 1689 (1700-3)	NA	NA	NA
BELOW MINIMA REQUIRES MISSED APPROACH CLIMB GRADIENT OF 337 FT/NM					
INNAV MDA	NA	4800-3 454 (500-3)	NA	NA	NA



DUGWAY PROVING GROUND, UTAH **40°12'N-112°56'W** MICHAEL AAF (KDPG)  
 Andl 2 30MAR17 **RNAV (GPS) RWY 12**

