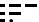



LAMMA SEVEN DEPARTURE

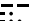
ATIS
132.875
CLNC DEL
119.3
GND CON
121.9 348.6
DAYTONA TOWER
120.7 257.8
DAYTONA DEP CON
127.075 351.95

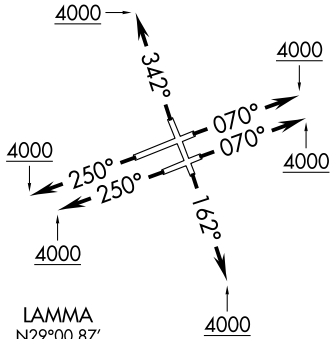
ORMOND BEACH
112.6 OMN 
Chan 73

OCALA
113.7 OCF 
Chan 84

TAKEOFF MINIMUMS
Rwys 7L, 7R, 16, 25R, 25L, 34: Standard.

NOTE: RADAR required.

ORLANDO
112.2 ORL 
Chan 59



LAMMA
N29°00.87'
W081°05.38'

JESUP
N28°53.31'
W081°04.78'

**TOP ALTITUDE:
4000**

BITHO
N28°37.86'
W081°03.56'
L-23-24

NOTE: Chart not to scale.

DEPARTURE ROUTE DESCRIPTION

- TAKEOFF RUNWAY 7L:** Climb heading 070° to 4000 or as assigned by ATC, thence . . .
- TAKEOFF RUNWAY 7R:** Climb heading 070° to 4000 or as assigned by ATC, thence . . .
- TAKEOFF RUNWAY 16:** Climb heading 162° to 4000 or as assigned by ATC, thence . . .
- TAKEOFF RUNWAY 25R:** Climb heading 250° to 4000 or as assigned by ATC, thence . . .
- TAKEOFF RUNWAY 25L:** Climb heading 250° to 4000 or as assigned by ATC, thence . . .
- TAKEOFF RUNWAY 34:** Climb heading 342° to 4000 or as assigned by ATC, thence . . .

. . . Expect vectors to intercept OMN R-176 to BITHO INT/OMN 40 DME, then via assigned route. Expect clearance to filed altitude. Flight level ten (10) minutes after departure.

LAMMA SEVEN DEPARTURE

SE-3, 03 DEC 2020 to 31 DEC 2020

SE-3, 03 DEC 2020 to 31 DEC 2020

(ROYES7.ROYES) 20086

ROYES SEVEN DEPARTURE

AL-110

DAYTONA BEACH INTL (DAB)
DAYTONA BEACH, FLORIDA

ATIS
132.875
CLNC DEL
119.3
GND CON
121.9 348.6
DAYTONA TOWER
120.7 257.8
DAYTONA DEP CON
127.075 351.95

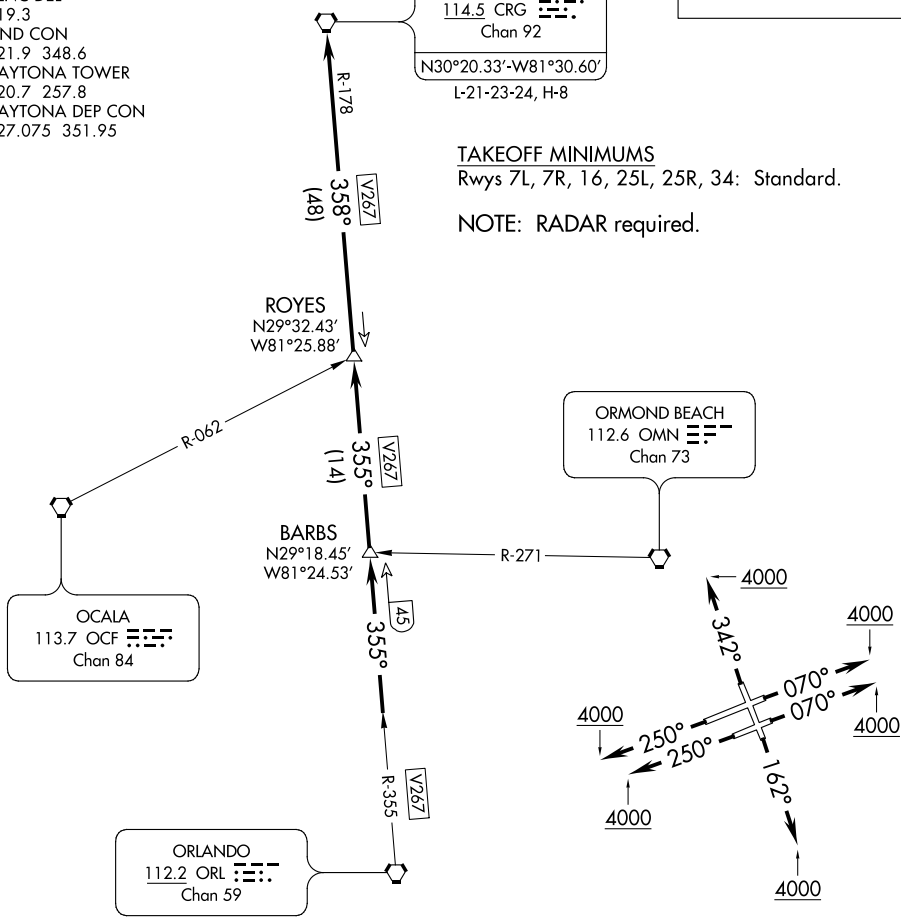
**TOP ALTITUDE:
4000**

CRAIG
114.5 CRG
Chan 92
N30°20.33'-W81°30.60'
L-21-23-24, H-8

TAKEOFF MINIMUMS

Rwys 7L, 7R, 16, 25L, 25R, 34: Standard.

NOTE: RADAR required.



NOTE: Chart not to scale.

DEPARTURE ROUTE DESCRIPTION

- TAKEOFF RUNWAY 7L: Climb heading 070° to 4000 or as assigned by ATC, thence . . .
- TAKEOFF RUNWAY 7R: Climb heading 070° to 4000 or as assigned by ATC, thence . . .
- TAKEOFF RUNWAY 16: Climb heading 162° to 4000 or as assigned by ATC, thence . . .
- TAKEOFF RUNWAY 25L: Climb heading 250° to 4000 or as assigned by ATC, thence . . .
- TAKEOFF RUNWAY 25R: Climb heading 250° to 4000 or as assigned by ATC, thence . . .
- TAKEOFF RUNWAY 34: Climb heading 342° to 4000 or as assigned by ATC, thence . . .

. . . Expect vectors to intercept CRG R-178 to CRG VORTAC, then via assigned route.
Expect clearance to filed altitude/flight level ten (10) minutes after departure.

ROYES SEVEN DEPARTURE

(ROYES7.ROYES) 25JUN15

DAYTONA BEACH, FLORIDA
DAYTONA BEACH INTL (DAB)

SE-3, 03 DEC 2020 to 31 DEC 2020

SE-3, 03 DEC 2020 to 31 DEC 2020