

(HLNDS.BUKHD1) 18256

AL-469 (FAA)

BUKHD ONE ARRIVAL (RNAV)

ATLANTA, GEORGIA

DEKALB-PEACHTREE ATIS 128.4
 FULTON COUNTY AIRPORT-BROWN FIELD ATIS 120.175
 DOBBINS ARB ATIS ★ 269.5
 COBB COUNTY INTL-MC COLLUM FIELD ATIS 128.125
 GWINNETT COUNTY-BRISCO FIELD ATIS 132.275
 ATLANTA APP CON 121.0 268.7

ARRIVAL ROUTE DESCRIPTION

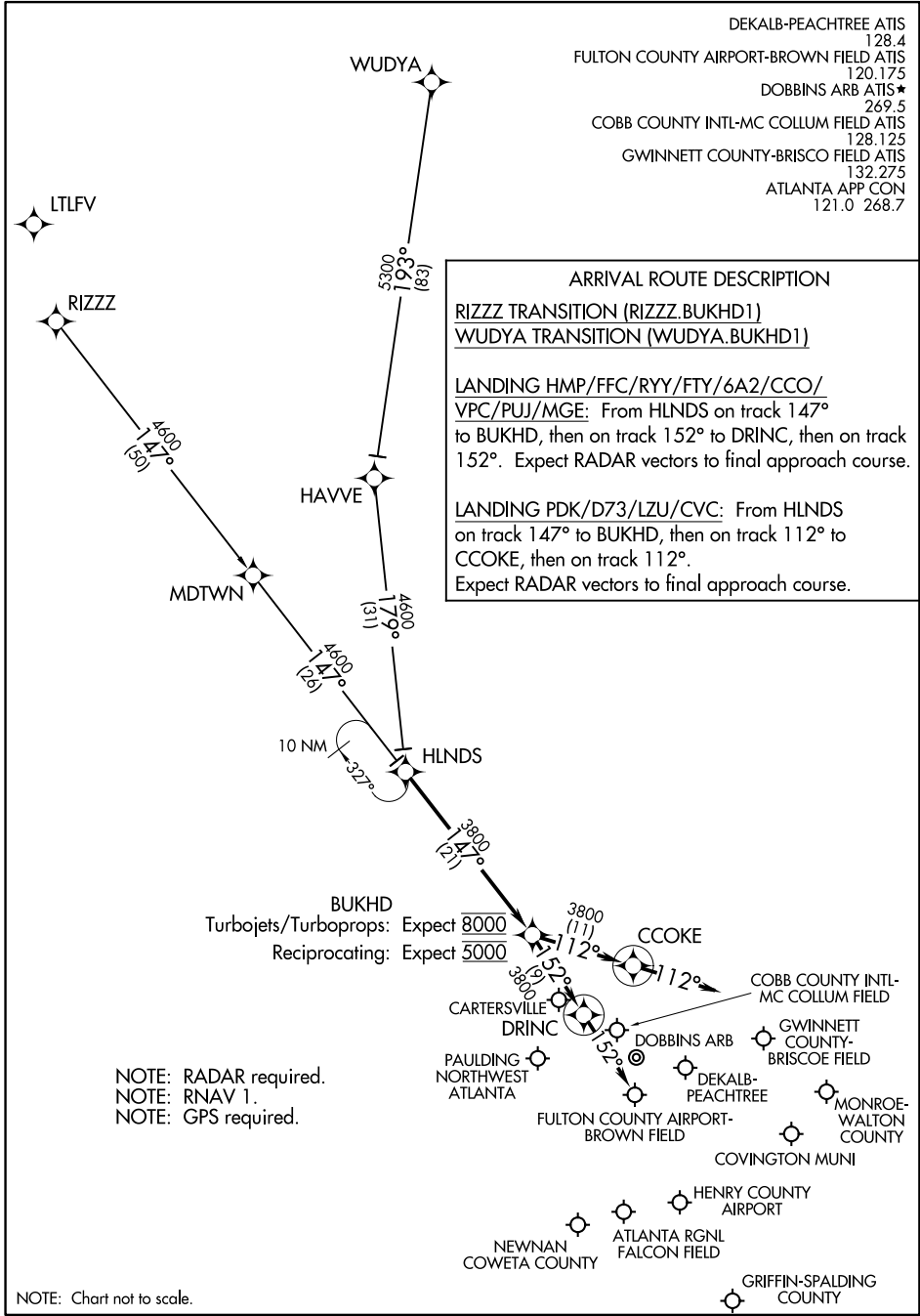
RIZZZ TRANSITION (RIZZZ.BUKHD1)
WUDYA TRANSITION (WUDYA.BUKHD1)

LANDING HMP/FFC/RYY/FTY/6A2/CCO/VPC/PUJ/MGE: From HLNDS on track 147° to BUKHD, then on track 152° to DRINC, then on track 152°. Expect RADAR vectors to final approach course.

LANDING PDK/D73/LZU/CVC: From HLNDS on track 147° to BUKHD, then on track 112° to CCOKE, then on track 112°. Expect RADAR vectors to final approach course.

SE-4, 30 JAN 2020 to 27 FEB 2020

SE-4, 30 JAN 2020 to 27 FEB 2020



NOTE: RADAR required.
 NOTE: RNAV 1.
 NOTE: GPS required.

NOTE: Chart not to scale.

BUKHD ONE ARRIVAL (RNAV)

(HLNDS.BUKHD1) 15SEP16

ATLANTA, GEORGIA

(AWSON.DEHAN1) 16315

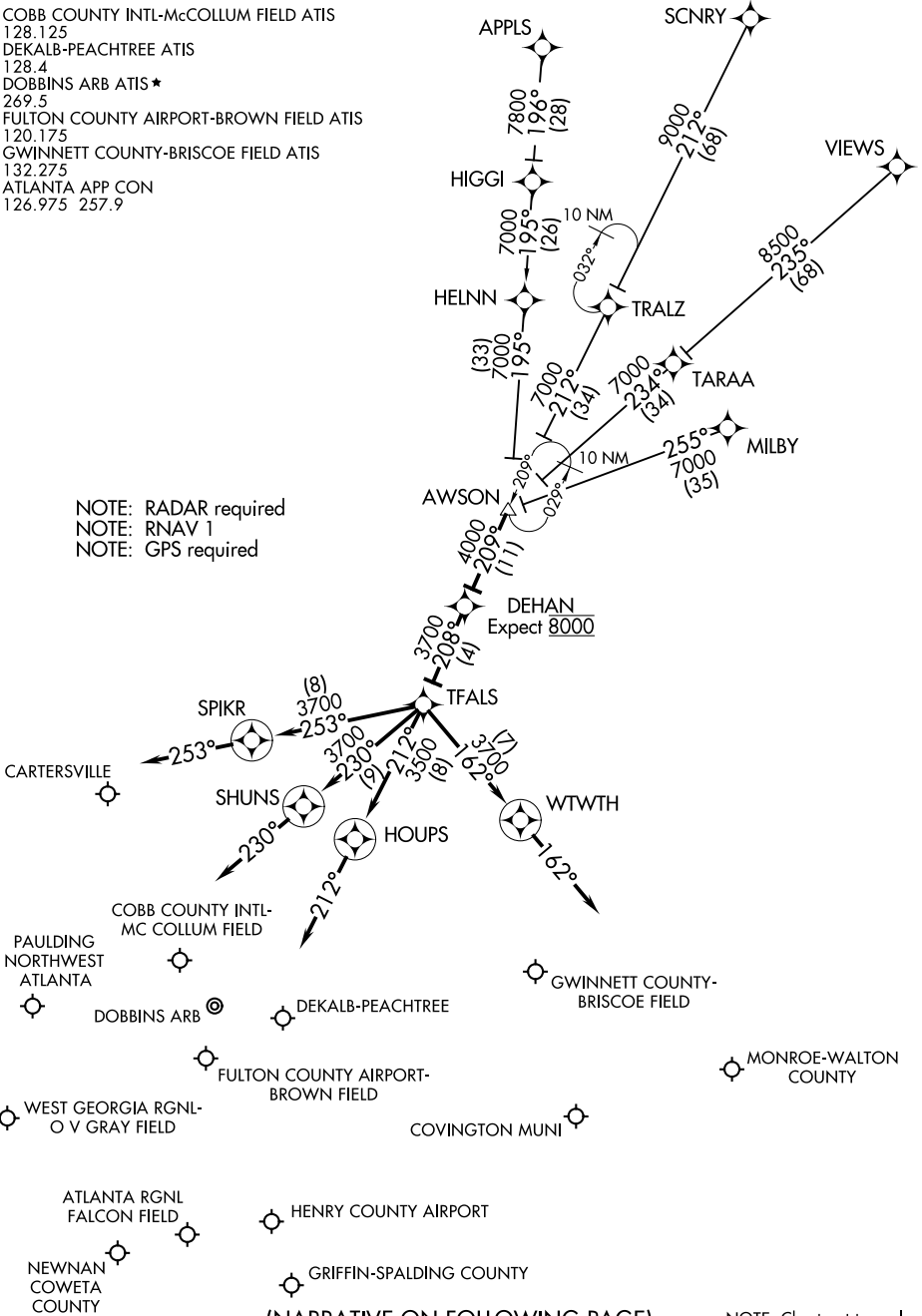
DEHAN ONE ARRIVAL (RNAV)

ST-469 (FAA)

ATLANTA, GEORGIA

COBB COUNTY INTL-McCOLLUM FIELD ATIS
128.125
DEKALB-PEACHTREE ATIS
128.4
DOBBINS ARB ATIS *
269.5
FULTON COUNTY AIRPORT-BROWN FIELD ATIS
120.175
GWINNETT COUNTY-BRISCOE FIELD ATIS
132.275
ATLANTA APP CON
126.975 257.9

NOTE: RADAR required
NOTE: RNAV 1
NOTE: GPS required



(NARRATIVE ON FOLLOWING PAGE)

NOTE: Chart not to scale.

DEHAN ONE ARRIVAL (RNAV)

(AWSON.DEHAN1) 15SEP16

ATLANTA, GEORGIA

SE-4, 30 JAN 2020 to 27 FEB 2020

SE-4, 30 JAN 2020 to 27 FEB 2020

ARRIVAL ROUTE DESCRIPTION

APPLS TRANSITION (APPLS.DEHAN1)

MILBY TRANSITION (MILBY.DEHAN1)

SCNRY TRANSITION (SCNRY.DEHAN1)

VIEWS TRANSITION (VIEWS.DEHAN1)

LANDING HMP/D73/LZU/6A2/CVC: From AWSON on track 209° to DEHAN, then on track 208° to TFALS, then on track 162° to WTWTH, then on track 162°. Expect RADAR vectors to final approach course.

LANDING PDK/FFC/CCO: From AWSON on track 209° to DEHAN, then on track 208° to TFALS, then on track 212° to HOUPS, then on track 212°. Expect RADAR vectors to final approach course.

LANDING RYY/VPC/PUJ/CTJ: From AWSON on track 209° to DEHAN, then on track 208° to TFALS, then on track 253° to SPIKR, then on track 253°. Expect RADAR vectors to final approach course.

LANDING FTY/MGE: From AWSON on track 209° to DEHAN, then on track 208° to TFALS, then on track 230° to SHUNS, then on track 230°. Expect RADAR vectors to final approach course.

SE-4, 30 JAN 2020 to 27 FEB 2020

SE-4, 30 JAN 2020 to 27 FEB 2020

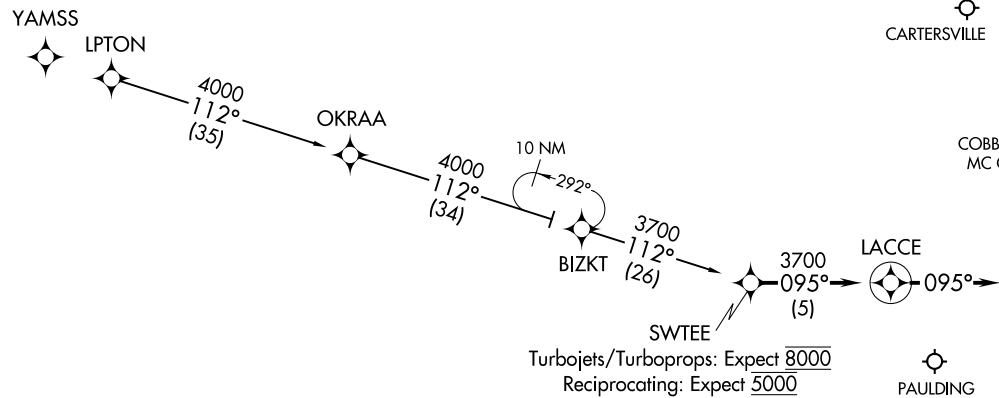
SWTEE ONE ARRIVAL (RNAV)
(SWTEE.SWTEE1) 15SEP16

(SWTEE.SWTEE1) 16315
SWTEE ONE ARRIVAL (RNAV)

ST-469 (FAA)

ATLANTA, GEORGIA

COBB COUNTY INTL-McCOLLUM FIELD ATIS 128.125
 DEKALB-PEACHTREE ATIS 128.4
 DOBBINS ARB ATIS* 269.5
 FULTON COUNTY AIRPORT-BROWN FIELD ATIS 120.175
 GWINNETT COUNTY-BRISCOE FIELD ATIS 132.275
 ATLANTA APP CON 126.975 257.9



Turbojets/Turboprops: Expect 8000
 Reciprocating: Expect 5000

NOTE: RADAR required.
 NOTE: RNAV 1.
 NOTE: GPS required.

ARRIVAL ROUTE DESCRIPTION

BIZKT TRANSITION (BIZKT.SWTEE1)
LPTON TRANSITION (LPTON.SWTEE1)

From SWTEE on track 095° to LACCE, then on track 095°.
 Expect RADAR vectors to final approach course.

NOTE: Chart not to scale.

ATLANTA, GEORGIA