

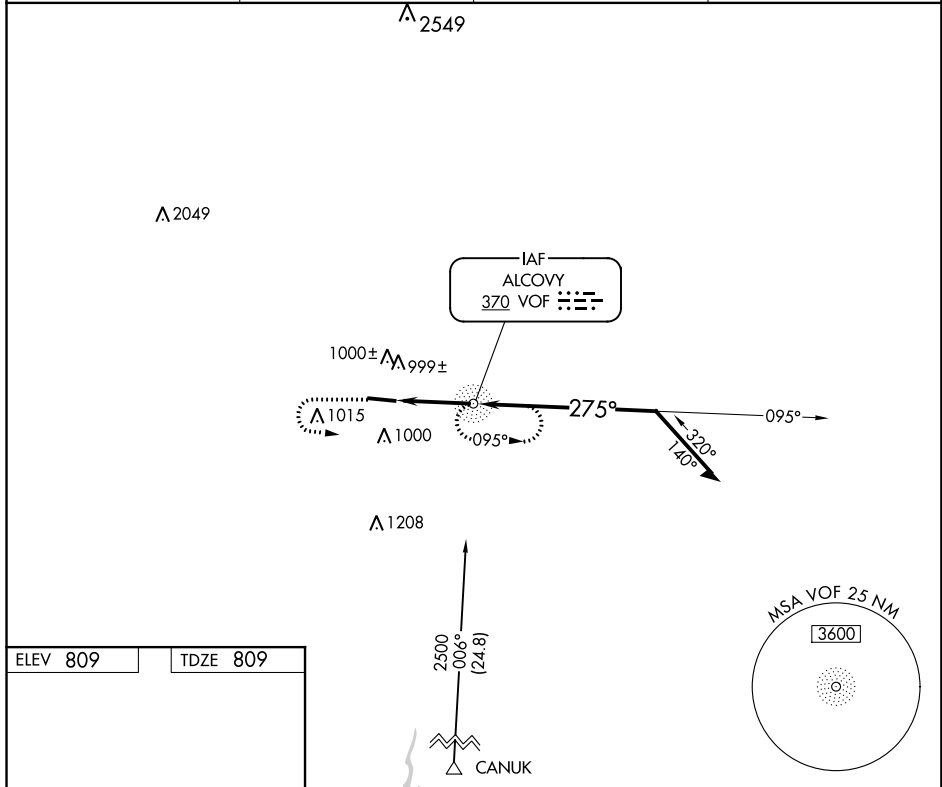
NDB	VOF	APP CRS	Rwy Idg	5500
370		275°	TDZE	809
			Apt Elev	809

NDB RWY 28
COVINGTON MUNI (CVC)

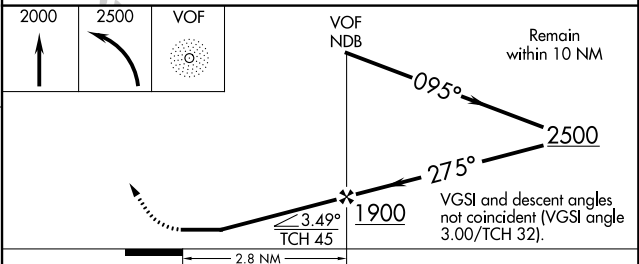
NA Helicopter visibility reduction below 3/4 SM NA. When local altimeter setting not received, use Lawrenceville altimeter setting and increase all MDA 100 feet and S-28 Cats C/D visibilities 3/8 mile and Circling Cat C visibility 1/4 mile.

MISSED APPROACH: Climb to 2000 then climbing left turn to 2500 direct VOF NDB and hold.

AWOS-3 118.725	ATLANTA APP CON 128.575 343.675	CLNC DEL 119.875	UNICOM 123.0 (CTAF)
--------------------------	---	----------------------------	-------------------------------



ELEV	809	TDZE	809
MIRL Rwy 10-28			
FAF to MAP 2.8 NM			
Knots	60	90	120
Min:Sec	2:48	1:52	1:24
		1:07	0:56



CATEGORY	A	B	C	D
S-28	1300-1	491 (500-1)	1300-1 3/8	491 (500-1 3/8)
CIRCLING	1300-1 491 (500-1)	1360-1 551 (600-1)	1360-1 1/2 551 (600-1 1/2)	1360-2 551 (600-2)

APP CRS **100°**
 Rwy Idg **6000**
 TDZE **795**
 Apt Elev **809**

RNAV (GPS) RWY 10
 COVINGTON MUNI (CVC)

▽ DME/DME RNP-0.3 NA. Helicopter visibility reduction below 3/4 SM NA.
△ NA When local altimeter setting not received, use Lawrenceville altimeter setting and increase all MDA 100 feet and LNAV Cat C and D visibility 1/4 mile, and Circling Cat C visibility 1/4 mile.

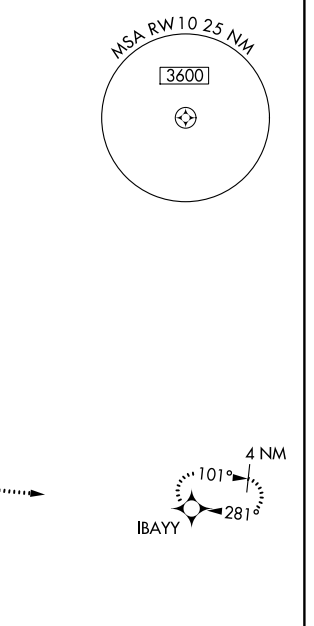
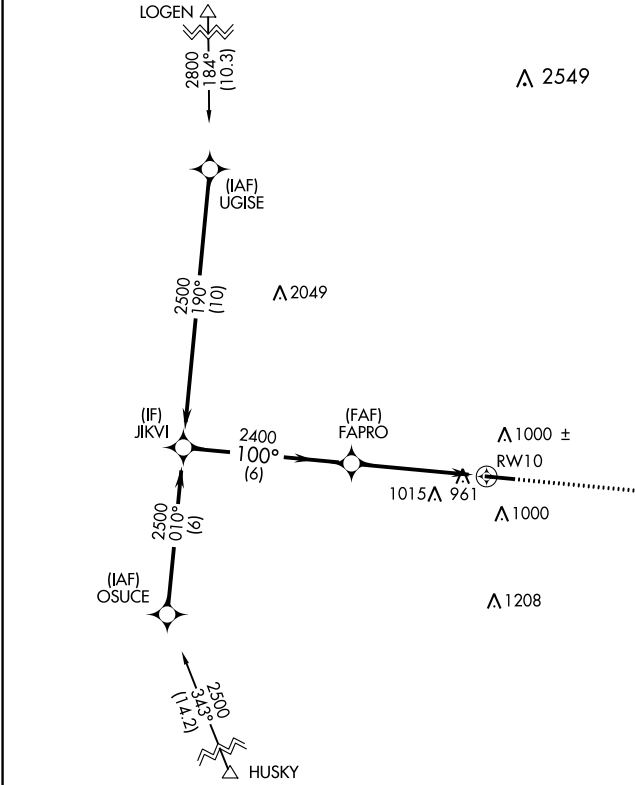
MISSED APPROACH:
 Climb to 3000 direct IBAYY and hold.

AWOS-3
118.725

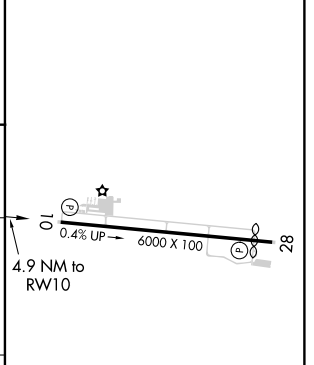
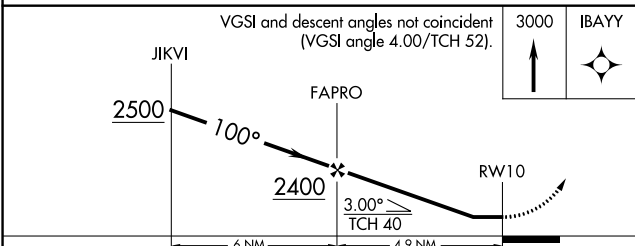
ATLANTA APP CON
128.575 343.675

CLNC DEL
119.875

UNICOM
123.0 (CTAF) 0



ELEV 809 TDZE 795



CATEGORY	A	B	C	D
LNAV MDA	1220-1	425 (500-1)	1220-1 1/4	425 (500-1 1/4)
CIRCLING	1300-1 491 (500-1)	1360-1 551 (600-1)	1360-1 1/2 551 (600-1 1/2)	1360-2 551 (600-2)

MRL Rwy 10-28 0

SE-4, 30 JAN 2020 to 27 FEB 2020

SE-4, 30 JAN 2020 to 27 FEB 2020

WAAS CH 72710 W28A	APP CRS 281°	Rwy Idg TDZE Apt Elev	5500 809 809
--	------------------------	-----------------------------	---

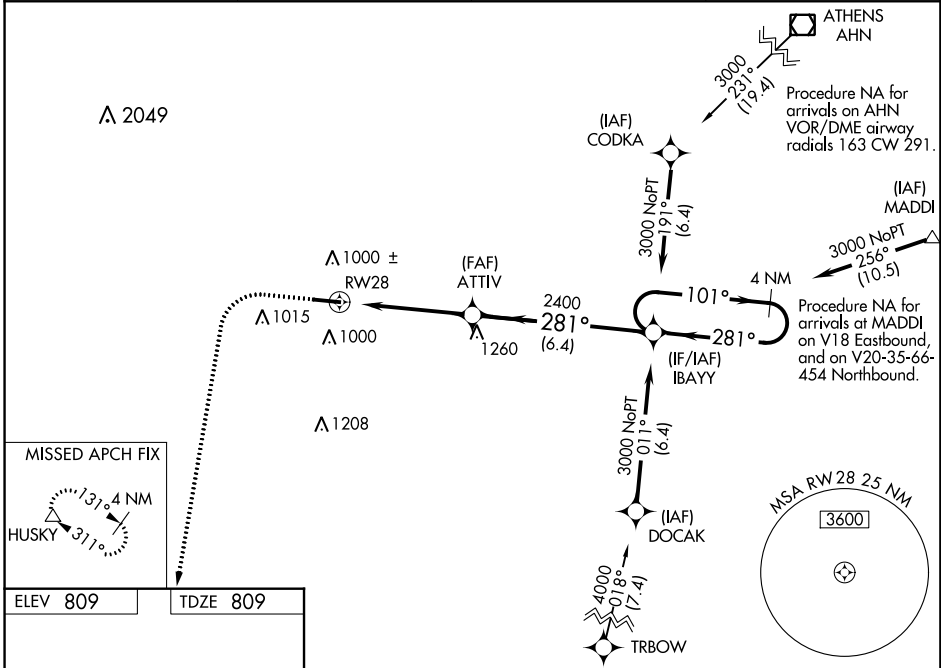
RNAV (GPS) RWY 28

COVINGTON MUNI (CVC)

Baro-VNAV NA when using Lawrenceville altimeter setting. For uncompensated Baro-VNAV systems, LNAV/VNAV NA below -16°C (3°F) or above 54°C (130°F). DME/DME RNP-0.3 NA. Helicopter visibility reduction below 3/4 SM NA. When local altimeter setting not received, use Lawrenceville altimeter setting and increase all DA 85 feet, all MDA 100 feet, increase LPV and LNAV/VNAV, LNAV Cat C and D visibility 1/4 mile, increase Circling Cat C visibility 1/4 mile. VDP NA when using Lawrenceville altimeter setting.

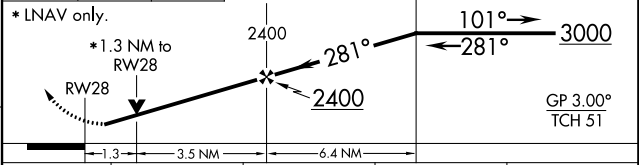
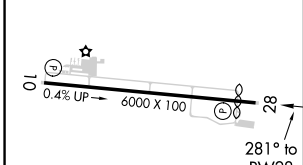
MISSED APPROACH:
Climb to 1300 then climbing left turn to 3000 direct HUSKY and hold.

AWOS-3 118.725	ATLANTA APP CON 128.575 343.675	CLNC DEL 119.875	UNICOM 123.0 (CTAF)
--------------------------	---	----------------------------	-------------------------------



ELEV 809	TDZE 809
----------	----------

1300	3000	HUSKY	VGSI and RNAV glidepath not coincident (VGSI angle 3.00/TCH 32).
↑	↻	△	



CATEGORY	A	B	C	D
LPV DA		1079-7/8	270 (300-7/8)	
LNAV/VNAV DA		1223-13/8	414 (500-13/8)	
LNAV MDA	1260-1	451 (500-1)	1260-13/8	451 (500-13/8)
CIRCLING	1300-1 491 (500-1)	1360-1 551 (600-1)	1360-1 1/2 551 (600-1 1/2)	1360-2 551 (600-2)

MIRL Rwy 10-28

SE-4, 30 JAN 2020 to 27 FEB 2020

SE-4, 30 JAN 2020 to 27 FEB 2020

VORTAC ATL 116.9 Chan 116	APP CRS 094°	Rwy Idg TDZE 795 Apt Elev 809
---	------------------------	---

VOR/DME RWY 10

COVINGTON MUNI (CVC)

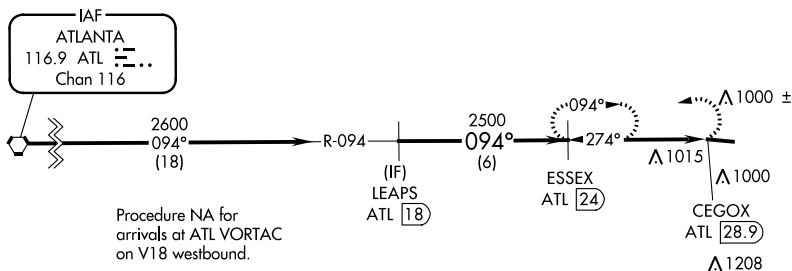
▼ Helicopter visibility reduction below ¾ SM NA. When local altimeter setting not received, use Lawrenceville altimeter setting and increase all MDA 100 feet and Cat C/D and Circling Cat C visibilities ¼ mile.

▲ MISSED APPROACH: Climbing left turn to 3000 on ATL VORTAC R-094 to ESSEX/ATL 24 DME and hold.

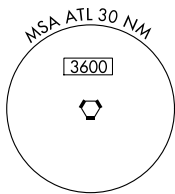
AWOS-3 118.725	ATLANTA APP CON 128.575 343.675	CLNC DEL 119.875	UNICOM 123.0 (CTAF) 0
--------------------------	---	----------------------------	---------------------------------

▲2549

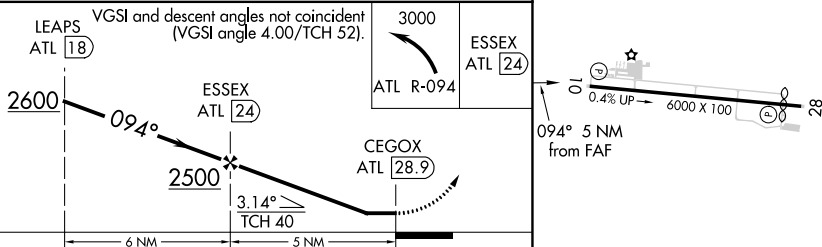
▲2049



Procedure NA for arrivals at ATL VORTAC on V18 westbound.



ELEV 809	TDZE 795
----------	----------



CATEGORY	A	B	C	D
S-10	1320-1	525 (600-1)	1320-1½	525 (600-1½)
CIRCLING	1320-1 511 (600-1)	1360-1¼ 551 (600-1¼)	1360-1½ 551 (600-1½)	1360-2 551 (600-2)

MIRL Rwy 10-28 0