

LOC/DME I-AQI <b>111.75</b>	APP CRS <b>101°</b>	Rwy Idg <b>10113</b> TDZE <b>809</b> Apt Elev <b>815</b>
Chan <b>54 (Y)</b>		

# ILS RWY 10R (SA CAT I & II)

JOHN GLENN COLUMBUS INTL (CMH)

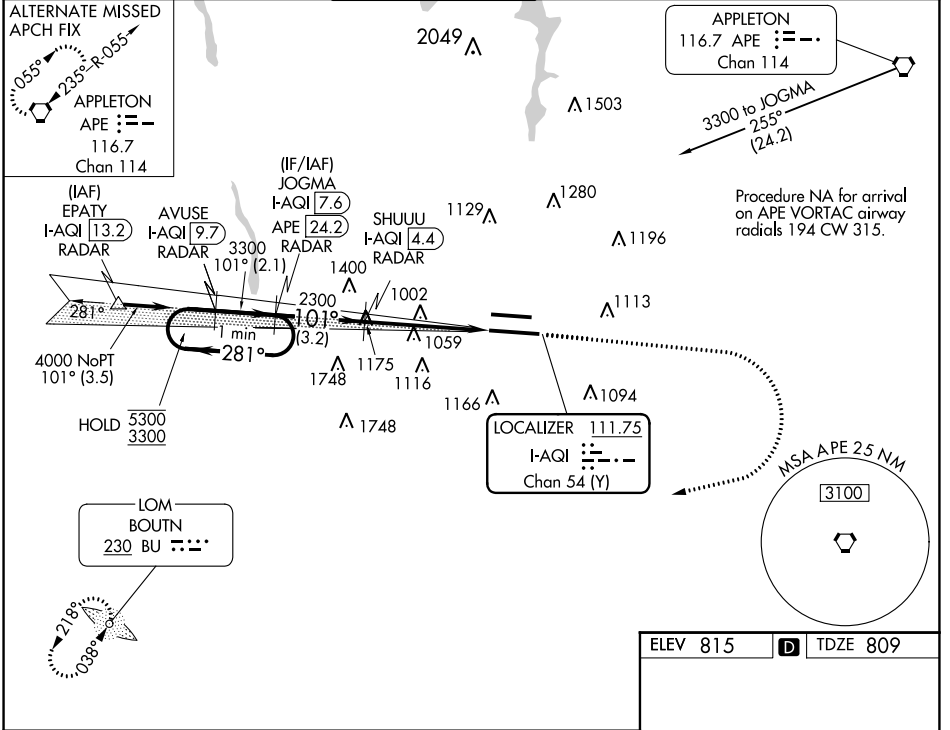
ADF required. DME or RADAR required.

Simultaneous approach authorized.  
SA CAT I, SA CAT II: Requires specific OPSPEC, MSPEC, or LOA approval.

MALSR

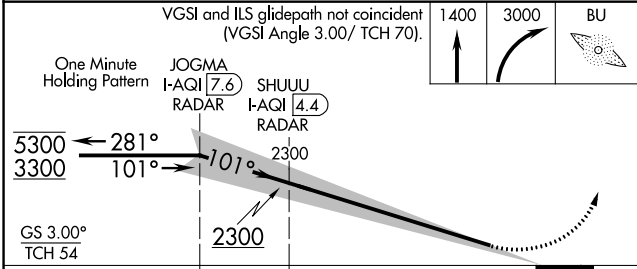
MISSED APPROACH: Climb to 1400 then climbing right turn to 3000 direct BU LOM and hold.

D-ATIS <b>124.6</b>	COLUMBUS APP CON <b>125.95 371.975</b>	COLUMBUS TOWER <b>132.7 257.8</b>	GND CON <b>121.9 348.6</b>	CLNC DEL <b>126.3</b>	CPDLC
------------------------	---	--------------------------------------	-------------------------------	--------------------------	-------

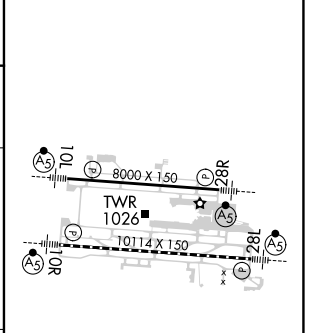


EC-2, 22 FEB 2024 to 21 MAR 2024

EC-2, 22 FEB 2024 to 21 MAR 2024



ELEV 815	<b>D</b> TDZE 809
----------	-------------------



CATEGORY	A	B	C	D
S-ILS 10R	SA CAT I	RA 146/14	150 DA 959	
S-ILS 10R	SA CAT II	RA 99/12	100 DA 909	

## SA CATEGORY I & II ILS- SPECIAL AIRCREW & AIRCRAFT CERTIFICATION REQUIRED

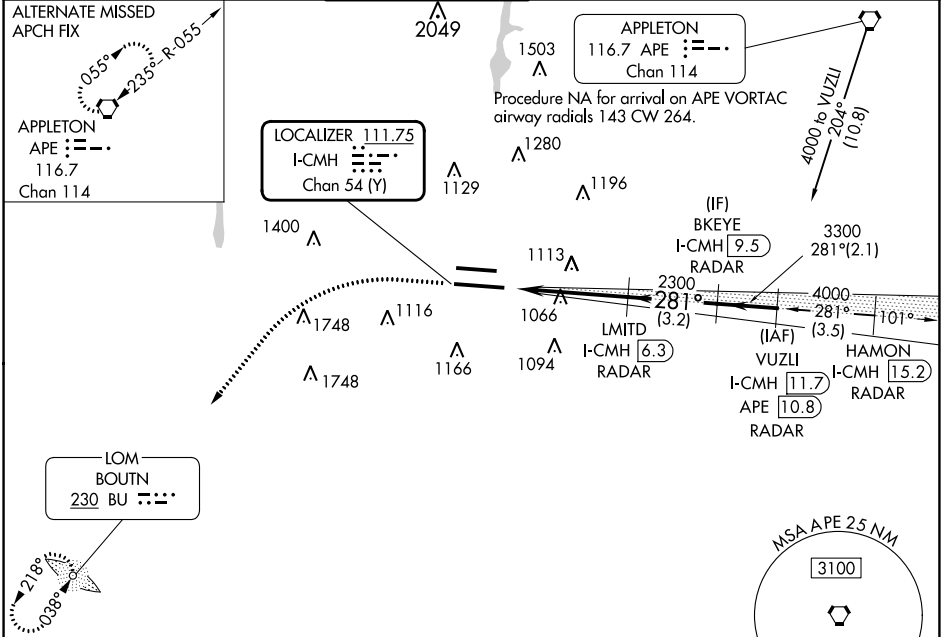
TDZ/CL Rwy 10R-28L  
HIRL Rwy 10R-28L and 10L-28R

LOC/DME I-CMH <b>111.75</b> Chan <b>54 (Y)</b>	APP CRS <b>281°</b>	Rwy Idg <b>10113</b> TDZE <b>815</b> Apt Elev <b>815</b>
--	------------------------	--

# ILS RWY 28L (SA CAT I & II)

JOHN GLENN COLUMBUS INTL (CMH)

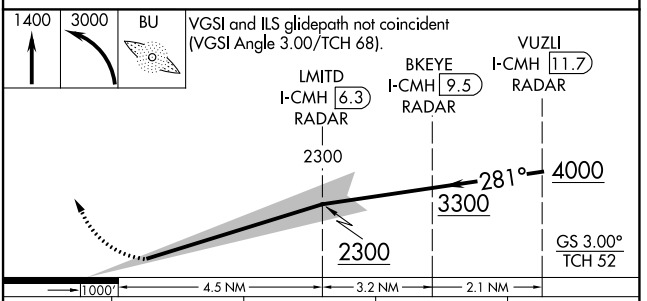
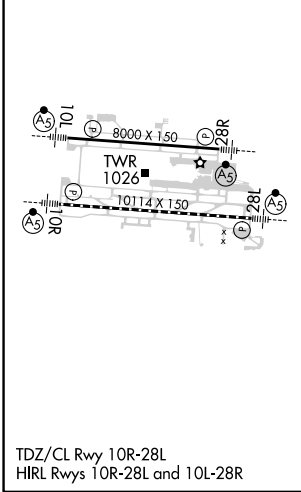
ADF required. DME or RADAR required.		MALSR	MISSED APPROACH: Climb to 1400 then climbing left turn to 3000 direct BU LOM and hold.		
Simultaneous approach authorized. SA CAT I, SA CAT II: Requires specific OPSPEC, MSPEC, or LOA approval.		AS			
D-ATIS <b>124.6</b>	COLUMBUS APP CON <b>125.95 371.975</b>	COLUMBUS TOWER <b>132.7 257.8</b>	GND CON <b>121.9 348.6</b>	CLNC DEL <b>126.3</b>	CPDLC



EC-2, 22 FEB 2024 to 21 MAR 2024

EC-2, 22 FEB 2024 to 21 MAR 2024

ELEV 815	D	TDZE 815
----------	---	----------



CATEGORY	A	B	C	D
S-ILS 28L	SA CAT I RA 157/14 150 DA 965			
S-ILS 28L	SA CAT II RA 100/12 100 DA 915			

## SA CATEGORY I & II ILS - SPECIAL AIRCREW & AIRCRAFT CERTIFICATION REQUIRED

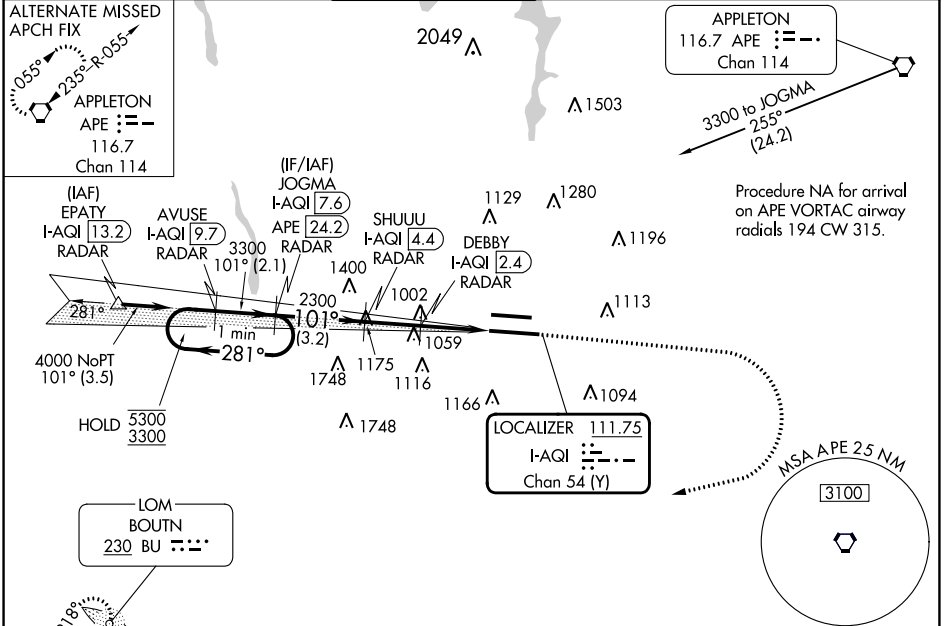


LOC/DME I-AQI <b>111.75</b>	APP CRS <b>101°</b>	Rwy Idg <b>10113</b> TDZE <b>809</b> Apt Elev <b>815</b>
Chan <b>54 (Y)</b>		

# ILS or LOC RWY 10R

JOHN GLENN COLUMBUS INTL (CMH)

ADF required. DME or RADAR required.		MALSR	MISSED APPROACH: Climb to 1400 then climbing right turn to 3000 direct BU LOM and hold.		
Simultaneous approach authorized.		AS			
D-ATIS <b>124.6</b>	COLUMBUS APP CON <b>125.95 371.975</b>	COLUMBUS TOWER <b>132.7 257.8</b>	GND CON <b>121.9 348.6</b>	CLNC DEL <b>126.3</b>	CPDLC



EC-2, 22 FEB 2024 to 21 MAR 2024

EC-2, 22 FEB 2024 to 21 MAR 2024

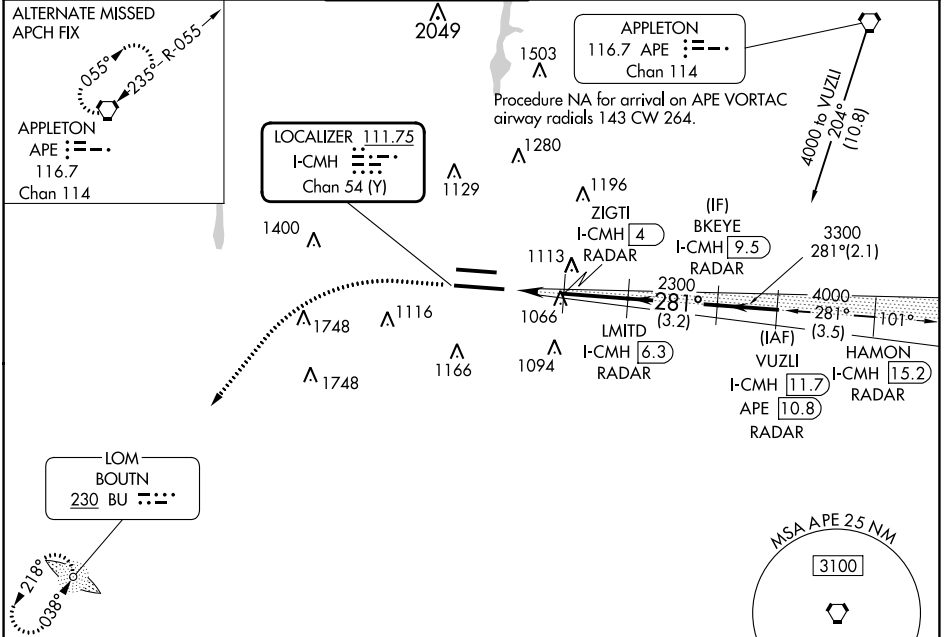
ELEV 815		D TDZE 809	
VGSi and ILS glidepath not coincident (VGSi Angle 3.00°/TCH 70°).			
One Minute Holding Pattern		BU	
JOGMA I-AQI 7.6 SHUUU I-AQI 4.4 DEBBY I-AQI 2.4 I-AQI 1.1 I-AQI 0.2 I-AQI DME ANTENNA			
5300 ← 281° 3300 → 101°		1400 3000 BU	
GS 3.00° TCH 54			
CATEGORY	A	B	C
S-ILS 10R	1009/18		200 (200-½)
S-LOC 10R	1260/24	451 (500-½)	1260/45 451 (500-¾)
CIRCLING	1340-1	525 (600-1)	1520-2 705 (800-2) 1520-2 ¼ 705 (800-2¼)
TDZ/CL Rwy 10R-28L HIRL Rwys 10R-28L and 10L-28R FAF to MAP 4.5 NM			
Knots		60	90 120 150 180
Min:Sec		4:30	3:00 2:15 1:48 1:30

LOC/DME I-CMH <b>111.75</b> Chan <b>54 (Y)</b>	APP CRS <b>281°</b>	Rwy Idg <b>10113</b> TDZE <b>815</b> Apt Elev <b>815</b>
--	------------------------	--

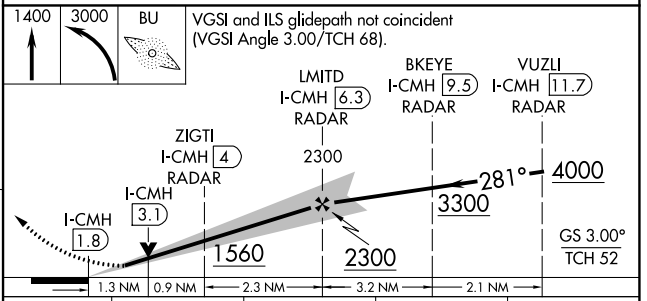
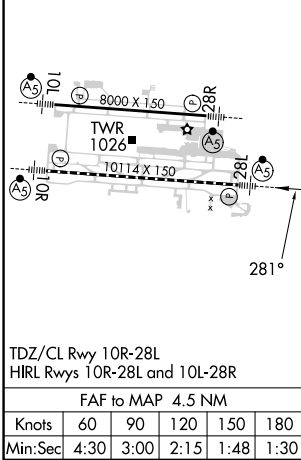
# ILS or LOC RWY 28L

JOHN GLENN COLUMBUS INTL (CMH)

ADF required. DME or RADAR required.		MALSRR	MISSED APPROACH: Climb to 1400 then climbing left turn to 3000 direct BU LOM and hold.		
▼ Simultaneous approach authorized. ▲ For inop ALS, increase S-LOC 28L Cat C/D visibility to 1 3/8 SM.					
D-ATIS <b>124.6</b>	COLUMBUS APP CON <b>125.95 371.975</b>	COLUMBUS TOWER <b>132.7 257.8</b>	GND CON <b>121.9 348.6</b>	CLNC DEL <b>126.3</b>	CPDLC



ELEV <b>815</b>	<b>D</b>	TDZE <b>815</b>
-----------------	----------	-----------------



	1.3 NM	0.9 NM	2.3 NM	3.2 NM	2.1 NM
CATEGORY	A	B	C	D	
S-ILS 28L	1015/18 200 (200-1/2)				
S-LOC 28L	1300/24	485 (500-1/2)	1300/50	485 (500-1)	
<input checked="" type="checkbox"/> CIRCLING	1340-1	525 (600-1)	1520-2 705 (800-2)	1520-2 1/4 705 (800-2 1/4)	

EC-2, 22 FEB 2024 to 21 MAR 2024

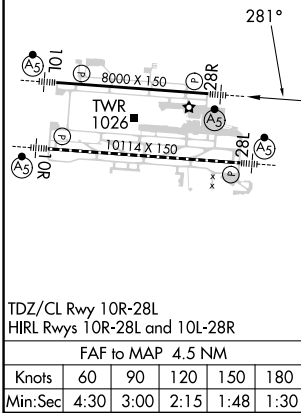
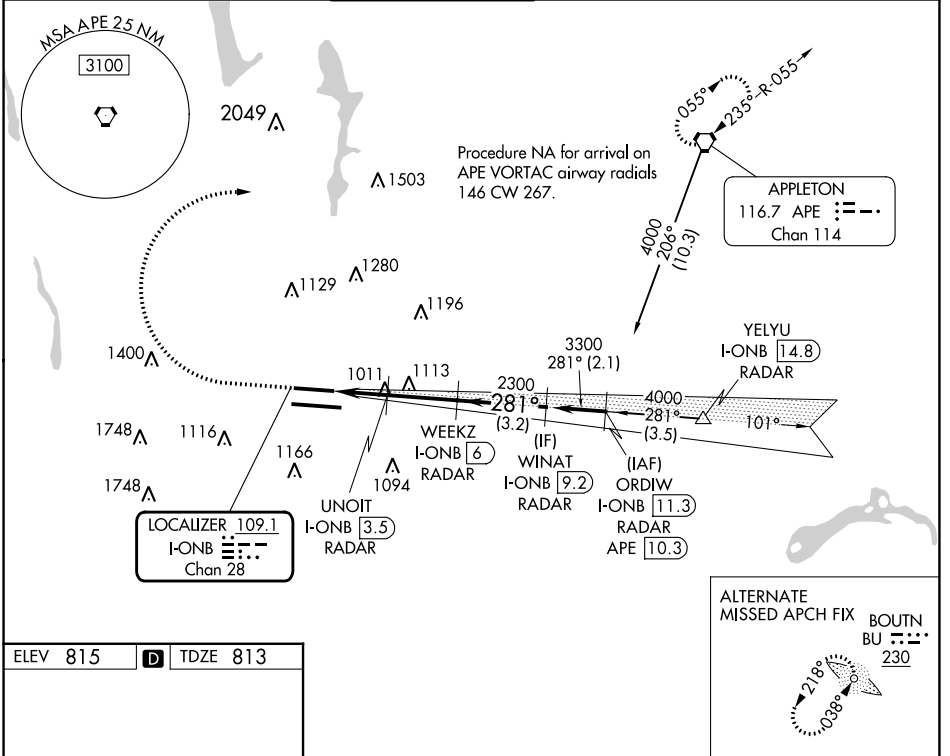
EC-2, 22 FEB 2024 to 21 MAR 2024

LOC/DME I-ONB <b>109.1</b> Chan 28	APP CRS <b>281°</b>	Rwy ldg <b>8000</b> TDZE <b>813</b> Apt Elev <b>815</b>
--	------------------------	---

# ILS or LOC RWY 28R

JOHN GLENN COLUMBUS INTL (CMH)

DME or RADAR required.		MALSR	MISSED APPROACH: Climb to 1400 then climbing right turn to 3000 direct APE VORTAC and hold.		
<p>Simultaneous approach authorized. Autopilot coupled approach NA.</p> <p>For inop ALS, increase S-LOC 28R Cat C/D visibility to 1 3/8 SM.</p>		AS			
D-ATIS <b>124.6</b>	COLUMBUS APP CON <b>125.95 371.975</b>	COLUMBUS TOWER <b>132.7 257.8</b>	GND CON <b>121.9 348.6</b>	CLNC DEL <b>126.3</b>	CPDLC



ELEV 815	D	TDZE 813		
1400	3000	APE	WEEKZ I-ONB [6] RADAR	WINAT I-ONB [9.2] RADAR
UNOIT I-ONB [3.5] RADAR	2300	281°	3300	
I-ONB [1.5]	I-ONB [2.8]	1480	2300	GS 3.00° TCH 50
1.3 NM	0.7 NM	2.5 NM	3.2 NM	
CATEGORY	A	B	C	D
S-ILS 28R	1013/24 200 (200-1/2)			
S-LOC 28R	1280/24	467 (500-1/2)	1280/50	467 (500-1)
CIRCLING	1340-1	525 (600-1)	1520-2 705 (800-2)	1520-2 1/4 705 (800-2 1/4)

EC-2, 22 FEB 2024 to 21 MAR 2024

EC-2, 22 FEB 2024 to 21 MAR 2024

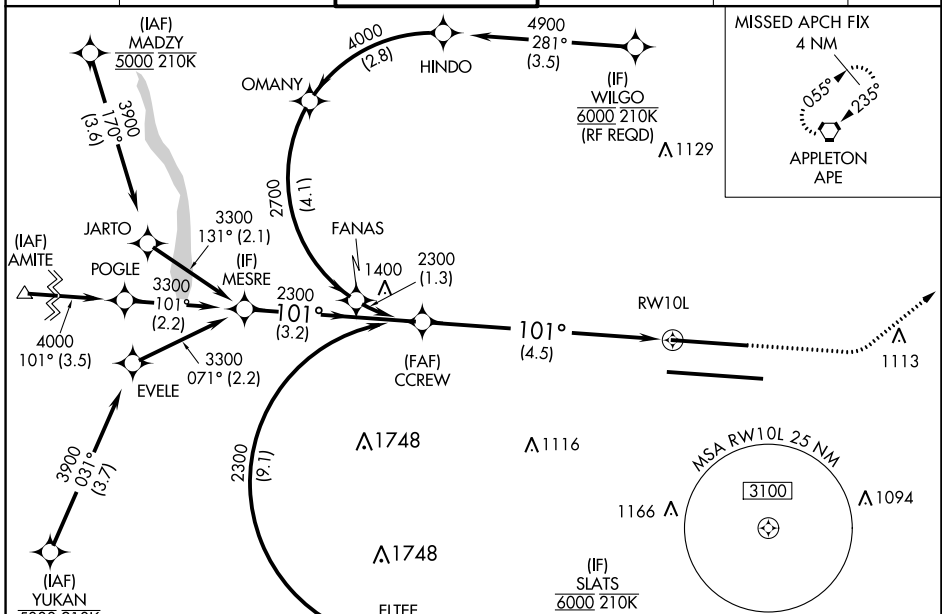
APP CRS	Rwy Idg	<b>8000</b>
<b>101°</b>	TDZE	<b>815</b>
	Apt Elev	<b>815</b>

# RNAV (RNP) Z RWY 10L

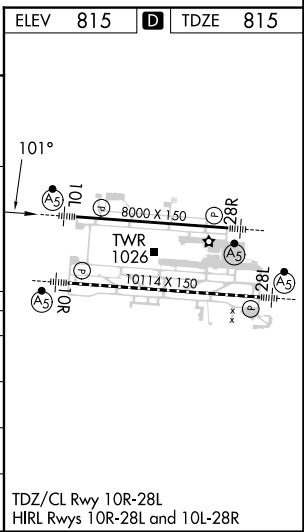
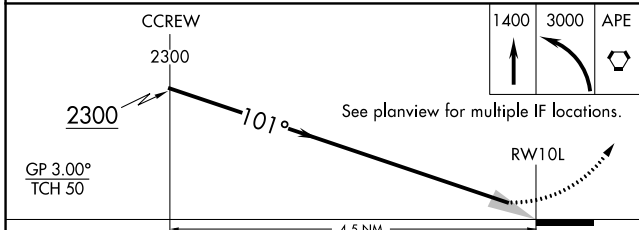
JOHN GLENN COLUMBUS INTL (CMH)

RNP AR APCH.	MALSR 	MISSED APPROACH: Climb to 1400 then climbing left turn to 3000 direct APE VORTAC and hold.
<p>Simultaneous approach authorized. For uncompensated Baro-VNAV systems, procedure NA below -19°C or above 54°C. For inop ALS, increase RNP 0.30 all Cats visibility to RVR 6000.</p>		

D-ATIS <b>124.6</b>	COLUMBUS APP CON <b>125.95 371.975</b>	COLUMBUS TOWER <b>132.7 257.8</b>	GND CON <b>121.9 348.6</b>	CLNC DEL <b>126.3</b>	CPDLC
------------------------	---	--------------------------------------	-------------------------------	--------------------------	-------



ELEV	<b>815</b>	<b>D</b>	TDZE	<b>815</b>
------	------------	----------	------	------------



CATEGORY	A	B	C	D
RNP 0.13 DA		1148/26	333 (400- $\frac{3}{8}$ )	
RNP 0.26 DA		1198/35	383 (400- $\frac{3}{4}$ )	
RNP 0.30 DA		1216/40	401 (500- $\frac{3}{4}$ )	

**AUTHORIZATION REQUIRED**

EC-2, 22 FEB 2024 to 21 MAR 2024

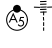
APP CRS	Rwy Idg	<b>10113</b>
<b>101°</b>	TDZE	<b>809</b>
	Apt Elev	<b>815</b>

# RNAV (RNP) Z RWY 10R

JOHN GLENN COLUMBUS INTL (CMH)

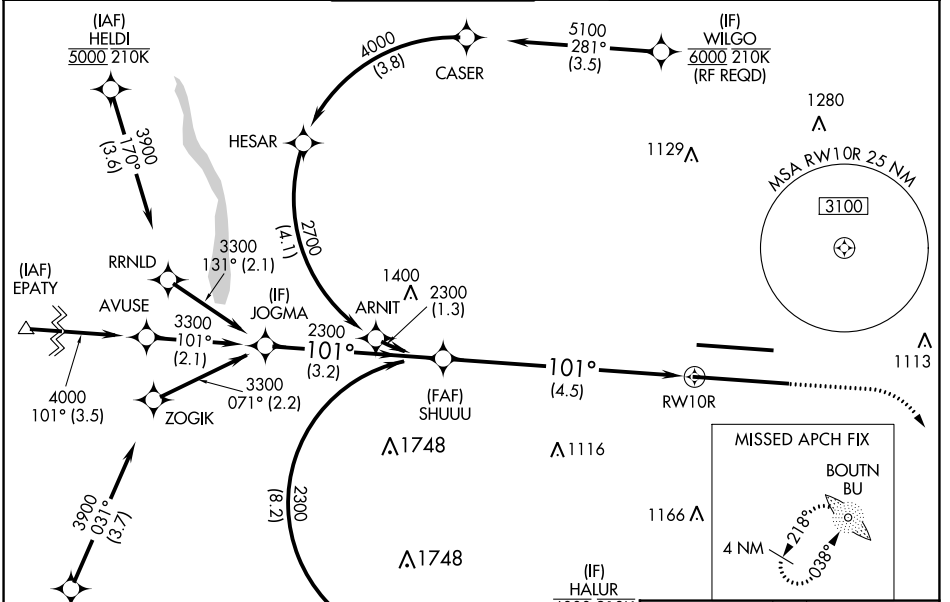
**RNP AR APCH.**

Simultaneous approach authorized. For uncompensated Baro-VNAV systems, procedure NA below -19°C or above 54°C. For inop ALS, increase RNP 0.30 all Cats visibility to RVR 6000.

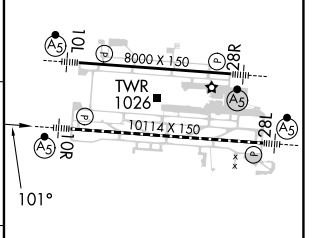
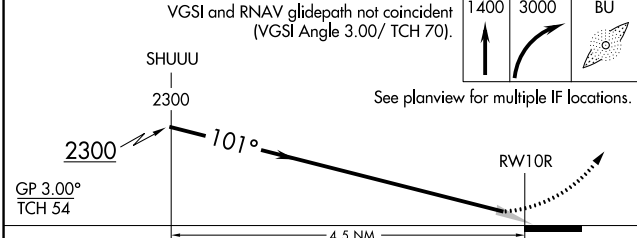
MALSR 

MISSED APPROACH: Climb to 1400 then climbing right turn to 3000 direct BOUTN LOM and hold.

D-ATIS	COLUMBUS APP CON	COLUMBUS TOWER	GND CON	CLNC DEL	CPDLC
<b>124.6</b>	<b>125.95 371.975</b>	<b>132.7 257.8</b>	<b>121.9 348.6</b>	<b>126.3</b>	



ELEV	815	TDZE	809
------	-----	------	-----



CATEGORY	A	B	C	D
RNP 0.17 DA		1138/26	329 (400-1/2)	
RNP 0.30 DA		1214/40	405 (400-3/4)	

**AUTHORIZATION REQUIRED**

TDZ/CL Rwy 10R-28L  
HIRL Rwy 10R-28L and 10L-28R

EC-2, 22 FEB 2024 to 21 MAR 2024

EC-2, 22 FEB 2024 to 21 MAR 2024



# RNAV (RNP) Z RWY 28L


JOHN GLENN COLUMBUS INTL (CMH)

APP CRS <b>281°</b>	Rwy Idg TDZE Apt Elev	<b>10113</b> <b>815</b> <b>815</b>
------------------------	-----------------------------	--

**RNP AR APCH.**

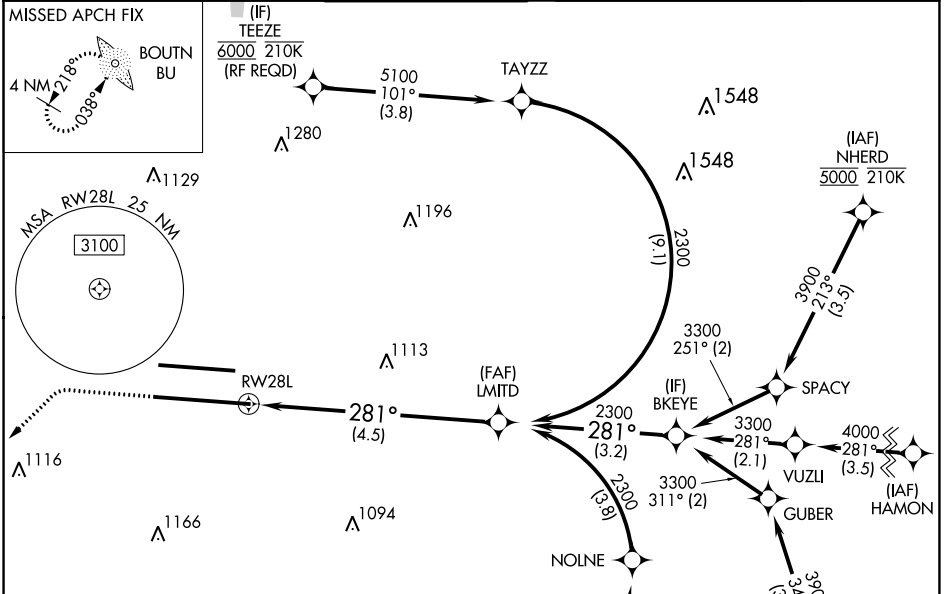
**▼** For uncompensated Baro-VNAV systems, procedure NA below -19°C or above 54°C. For inop ALS, increase RNP 0.30 all Cats visibility to 1½ SM. Simultaneous approach authorized.

**MALS R**

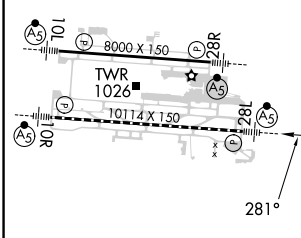


**MISSED APPROACH:**  
Climb to 1400 then climbing left turn to 3000 direct BOUTN LOM and hold.

D-ATIS <b>124.6</b>	COLUMBUS APP CON <b>125.95 371.975</b>	COLUMBUS TOWER <b>132.7 257.8</b>	GND CON <b>121.9 348.6</b>	CLNC DEL <b>126.3</b>	CPDLC
------------------------	---	--------------------------------------	-------------------------------	--------------------------	-------



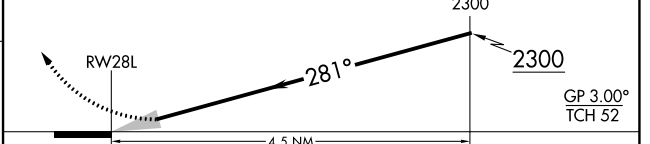
ELEV 815	<b>D</b>	TDZE 815
----------	----------	----------



1400 3000 BU

VGSI and RNAV glidepath not coincident (VGSI Angle 3.00°/ TCH 68).

LMITD See planview for multiple IF locations.



CATEGORY	A	B	C	D
RNP 0.17 DA		1147/26	332 (400-½)	
RNP 0.30 DA		1314/50	499 (500-1)	

## AUTHORIZATION REQUIRED

EC-2, 22 FEB 2024 to 21 MAR 2024

EC-2, 22 FEB 2024 to 21 MAR 2024

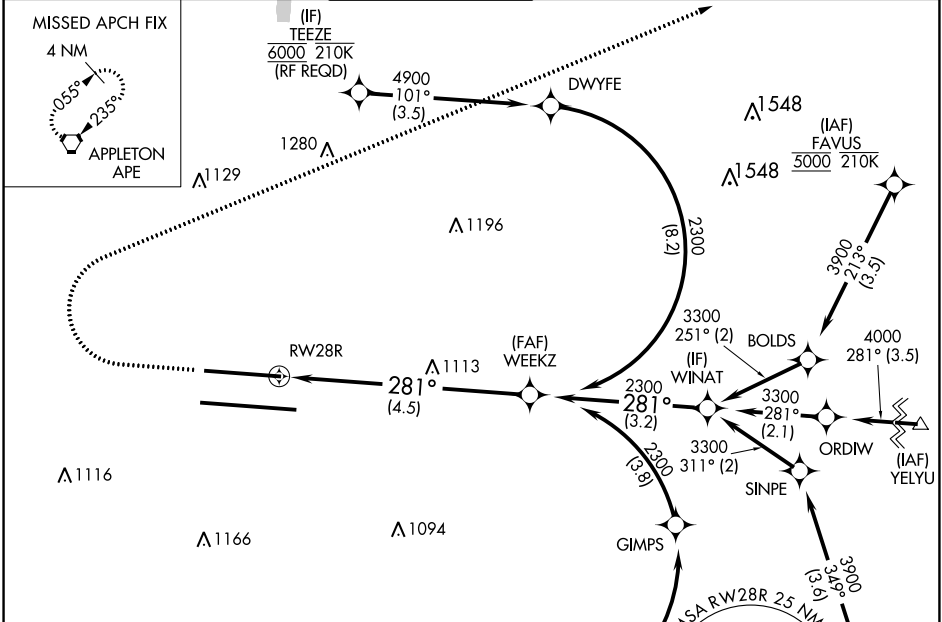
# RNAV (RNP) Z RWY 28R

JOHN GLENN COLUMBUS INTL (CMH)

APP CRS	Rwy Idg	<b>8000</b>
<b>281°</b>	TDZE	<b>813</b>
	Apt Elev	<b>815</b>

RNP AR APCH.	MALSR	MISSED APPROACH: Climb to 1400 then climbing right turn to 3000 to APE VORTAC and hold.
<p>▼ For uncompensated Baro-VNAV systems, procedure NA below -19°C or above 54°C. For inop ALS, increase RNP 0.16 all Cats visibility to RVR 4500 and increase RNP 0.30 all Cats visibility to RVR 5500. Simultaneous approach authorized.</p>		

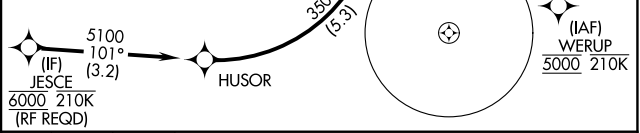
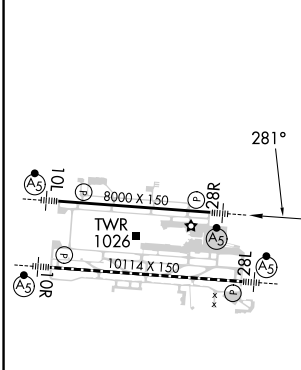
D-ATIS	COLUMBUS APP CON	COLUMBUS TOWER	GND CON	CLNC DEL	CPDLC
<b>124.6</b>	<b>125.95 371.975</b>	<b>132.7 257.8</b>	<b>121.9 348.6</b>	<b>126.3</b>	



EC-2, 22 FEB 2024 to 21 MAR 2024

EC-2, 22 FEB 2024 to 21 MAR 2024

ELEV	<b>815</b>	<b>D</b>	TDZE	<b>813</b>
------	------------	----------	------	------------



<p>5100 (IF) 101° (3.2) JESCE 6000 210K (RF REQD)</p>	<p>281°</p>	<p>1400 3000 APE</p>	<p>See planview for multiple IF locations.</p>
---	-------------	----------------------	--

<p>WEEKZ</p> <p>2300</p>	<p>RW28R</p> <p>281°</p> <p>2300</p> <p>4.5 NM</p> <p>GP 3.00° TCH 50</p>
--------------------------	---

CATEGORY	A	B	C	D
RNP 0.16 DA		1129/24	316 (400-½)	
RNP 0.30 DA		1185/35	372 (400-¾)	

## AUTHORIZATION REQUIRED


WAAS CH <b>40299</b> <b>W10B</b>	APP CRS <b>101°</b>	Rwy Idg TDZE Apt Elev	<b>8000</b> <b>815</b> <b>815</b>
--	------------------------	-----------------------------	---

# RNAV (GPS) Y RWY 10L

JOHN GLENN COLUMBUS INTL (CMH)

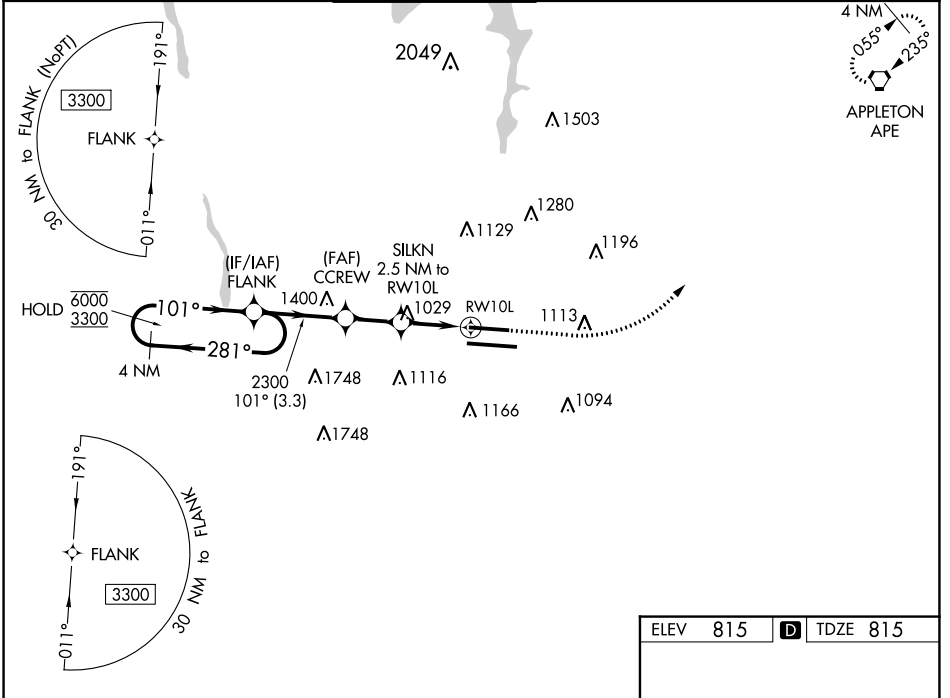
**RNP APCH**

▼ For uncompensated Baro-VNAV systems, LNAV/VNAV NA below -19°C or above 54°C.  
 ▲ LNAV procedure NA during simultaneous operations. Use of FD or AP providing RNAV track guidance required during simultaneous operations. Simultaneous approach authorized. For inop ALS, increase LNAV Cat C/D visibility to 1½ SM.  
 # RVR 1800 authorized with use of FD or AP or HUD to DA.

MALSRL  


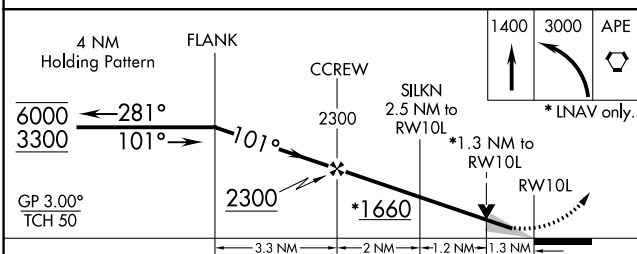
**MISSED APPROACH:**  
 Climb to 1400 then climbing left turn to 3000 direct APE VORTAC and hold.

D-ATIS <b>124.6</b>	COLUMBUS APP CON <b>125.95 371.975</b>	<b>COLUMBUS TOWER</b> <b>132.7 257.8</b>	GND CON <b>121.9 348.6</b>	CLNC DEL <b>126.3</b>	CPDLC
------------------------	---	---	-------------------------------	--------------------------	-------



EC-2, 22 FEB 2024 to 21 MAR 2024

EC-2, 22 FEB 2024 to 21 MAR 2024



ELEV 815	<b>D</b> TDZE 815
----------	-------------------

TWR 1026  
 10114 X 150  
 8000 X 150  
 2180  
 50

TDZ/CL Rwy 10R-28L  
 HIRL Rwy 10R-28L and 10L-28R

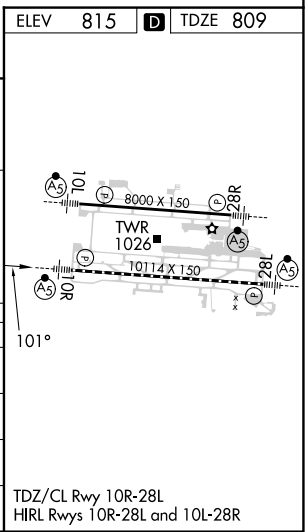
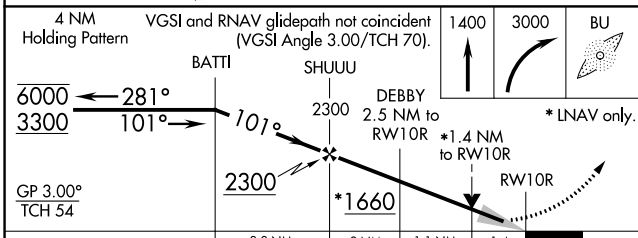
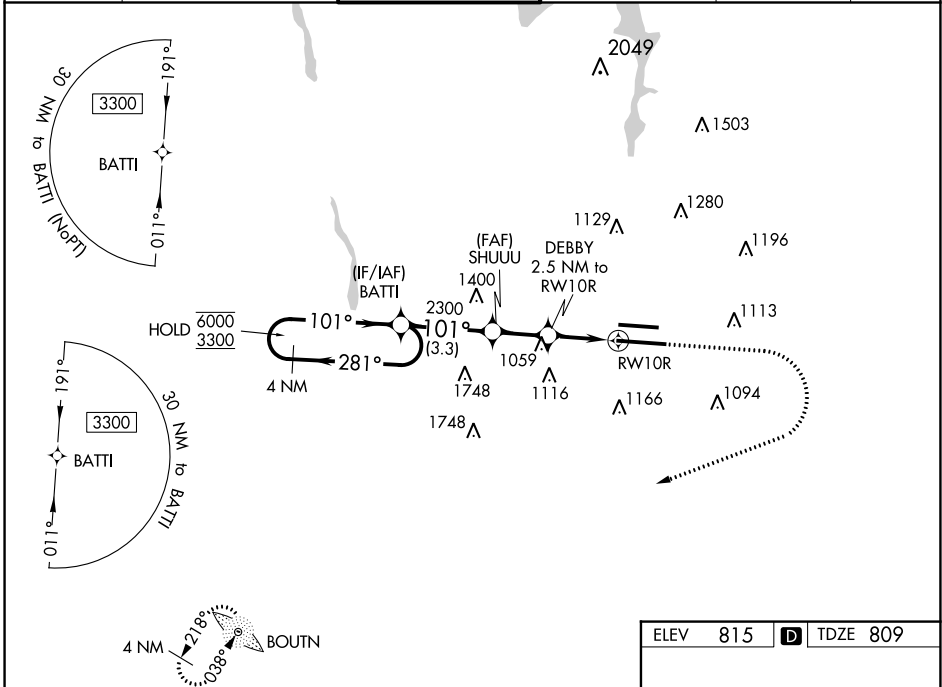
CATEGORY	A	B	C	D
LPV DA #		1015/24	200 (200-½)	
LNAV/VNAV DA		1197/35	382 (400-⅓)	
LNAV MDA	1280/24	465 (500-½)	1280/50	465 (500-1)
<b>C</b> CIRCLING	1340-1	525 (600-1)	1520-2 705 (800-2)	1520-2¼ 705 (800-2¼)

WAAS CH <b>99603</b> <b>W10A</b>	APP CRS <b>101°</b>	Rwy Idg TDZE <b>809</b> Apt Elev <b>815</b>	<b>10113</b>
--	------------------------	---	--------------

# RNAV (GPS) Y RWY 10R

JOHN GLENN COLUMBUS INTL (CMH)

RNP APCH		MALSR		MISSED APPROACH: Climb to 1400 then climbing right turn to 3000 direct BU LOM and hold.	
<p>▼ For uncompensated Baro-VNAV systems, LNAV/VNAV NA below -19°C or above 54°C. LNAV procedure NA during simultaneous operations. Use of FD or AP providing RNAV track guidance required during simultaneous operations. For inop ALS, increase LNAV Cat C/D visibility to 1<math>\frac{1}{8}</math> SM. Simultaneous approach authorized.</p>					
D-ATIS <b>124.6</b>	COLUMBUS APP CON <b>125.95 371.975</b>	COLUMBUS TOWER <b>132.7 257.8</b>	GND CON <b>121.9 348.6</b>	CLNC DEL <b>126.3</b>	CPDLC



CATEGORY	A	B	C	D
LPV DA	1009/18 200 (200- $\frac{1}{2}$ )			
LNAV/VNAV DA	1194/35 385 (400- $\frac{5}{8}$ )			
LNAV MDA	1320/24	511 (600- $\frac{1}{2}$ )	1320/55	511 (600-1)
CIRCLING	1340-1	525 (600-1)	1520-2 705 (800-2)	1520-2 $\frac{1}{4}$ 705 (800-2 $\frac{1}{4}$ )

TDZ/CL Rwy 10R-28L  
HIRL Rwy 10R-28L and 10L-28R

EC-2, 22 FEB 2024 to 21 MAR 2024

EC-2, 22 FEB 2024 to 21 MAR 2024

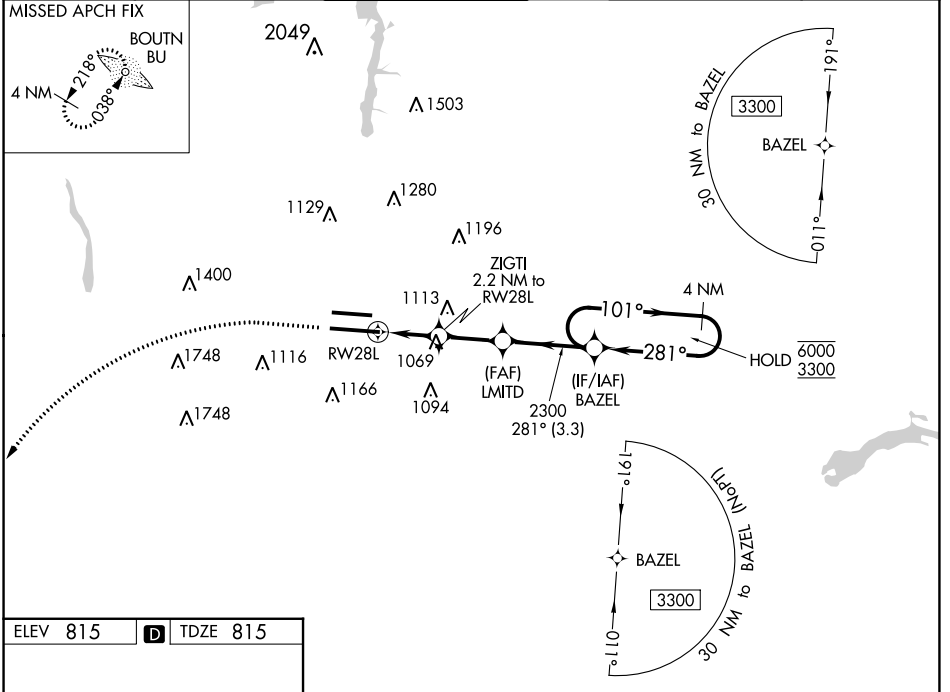
WAAS CH <b>48999</b> <b>W28A</b>	APP CRS <b>281°</b>	Rwy Idg TDZE <b>815</b> Apt Elev <b>815</b>	<b>10113</b>
--	------------------------	---	--------------

# RNAV (GPS) Y RWY 28L

JOHN GLENN COLUMBUS INTL (CMH)

RNP APCH	<p>Simultaneous approach authorized. For uncompensated Baro-VNAV systems, LNAV/VNAV NA below -19°C or above 54°C. LNAV procedure NA during simultaneous operations. Use of FD or AP providing RNAV track guidance required during simultaneous operations. For inop ALS, increase LNAV Cat C/D visibility to 1½ SM.</p>	MALSR	<p>MISSED APPROACH: Climb to 1400 then climbing left turn to 3000 direct BOUTN LOM and hold.</p>
----------	---	-------	--

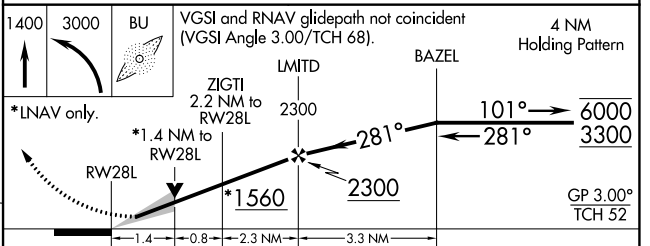
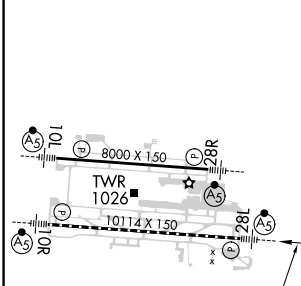
D-ATIS <b>124.6</b>	COLUMBUS APP CON <b>125.95 371.975</b>	COLUMBUS TOWER <b>132.7 257.8</b>	GND CON <b>121.9 348.6</b>	CLNC DEL <b>126.3</b>	CPDLC
------------------------	---	--------------------------------------	-------------------------------	--------------------------	-------



EC-2, 22 FEB 2024 to 21 MAR 2024

EC-2, 22 FEB 2024 to 21 MAR 2024

ELEV 815	<b>D</b>	TDZE 815
----------	----------	----------



CATEGORY	A	B	C	D
LPV DA		1015/18	200 (200-½)	
LNAV/VNAV DA		1237/40	422 (500-¾)	
LNAV MDA	1320/24	505 (600-½)	1320/55	505 (600-1)
<b>C</b> CIRCLING	1340-1	525 (600-1)	1520-2 705 (800-2)	1520-2¼ 705 (800-2¼)

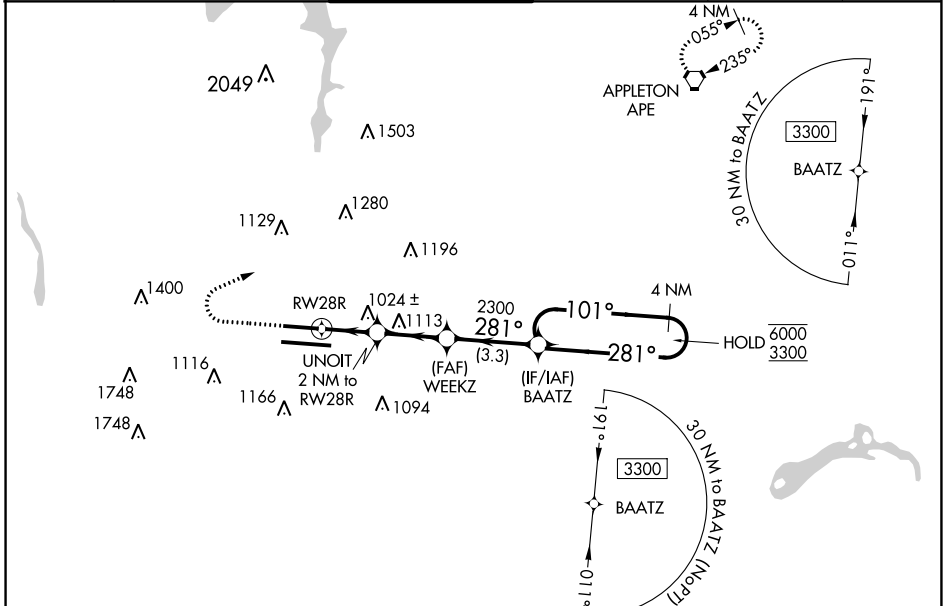
WAAS CH <b>86619</b> <b>W28B</b>	APP CRS <b>281°</b>	Rwy Idg TDZE Apt Elev	<b>8000</b> <b>813</b> <b>815</b>
--	------------------------	-----------------------------	---

# RNAV (GPS) Y RWY 28R

JOHN GLENN COLUMBUS INTL (CMH)

RNP APCH	MALS R	MISSED APPROACH: Climb to 1400 then climbing right turn to 3000 direct APE VORTAC and hold.
<p>Simultaneous approach authorized. For uncompensated Baro-VNAV systems, LNAV/VNAV NA below -19°C or above 54°C. LNAV procedure NA during simultaneous operations.</p> <p>Use of FD or AP providing RNAV track guidance required during simultaneous operations.</p> <p>For inop ALS, increase LNAV/VNAV all Cats visibility or RVR 4500; increase LNAV Cat C/D visibility to 1 3/8 SM. #RVR 1800 authorized with use of FD or AP or HUD to DA.</p>		

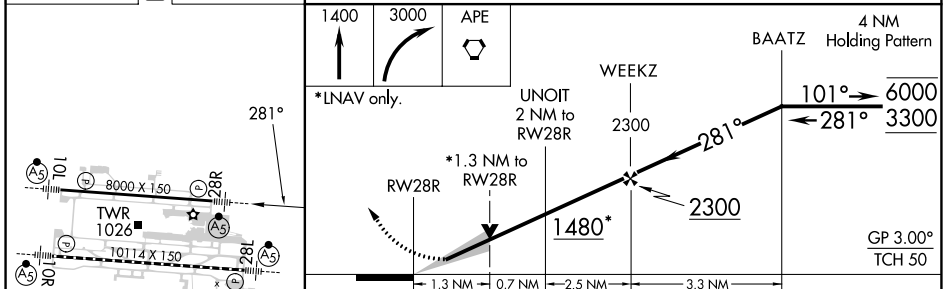
D-ATIS <b>124.6</b>	COLUMBUS APP CON <b>125.95 371.975</b>	COLUMBUS TOWER <b>132.7 257.8</b>	GND CON <b>121.9 348.6</b>	CLNC DEL <b>126.3</b>	CPDLC
------------------------	---	--------------------------------------	-------------------------------	--------------------------	-------



EC-2, 22 FEB 2024 to 21 MAR 2024

EC-2, 22 FEB 2024 to 21 MAR 2024

ELEV 815	<b>D</b>	TDZE 813
----------	----------	----------



CATEGORY	A	B	C	D
LPV DA #		1013/24	200 (200-1/2)	
LNAV/VNAV DA		1096/24	283 (300-1/2)	
LNAV MDA	1280/24	467 (500-1/2)	1280/50	467 (500-1)
<b>C</b> CIRCLING	1340-1	525 (600-1)	1520-2 705 (800-2)	1520-2 1/4 705 (800-2 1/4)

TDZ/CL Rwy 10R-28L  
HIRL Rwy 10R-28L and 10L-28R