

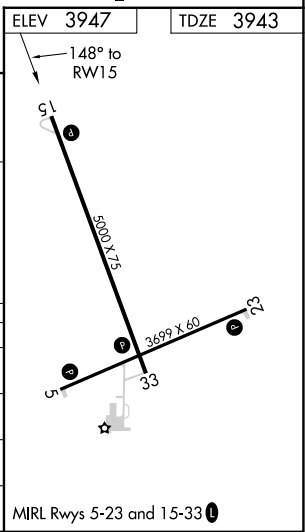
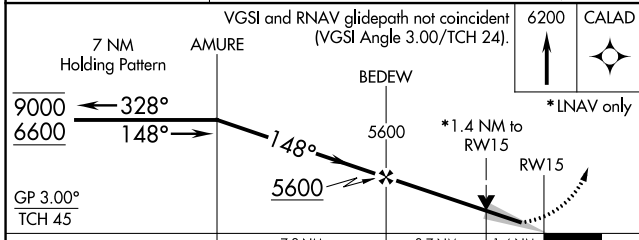
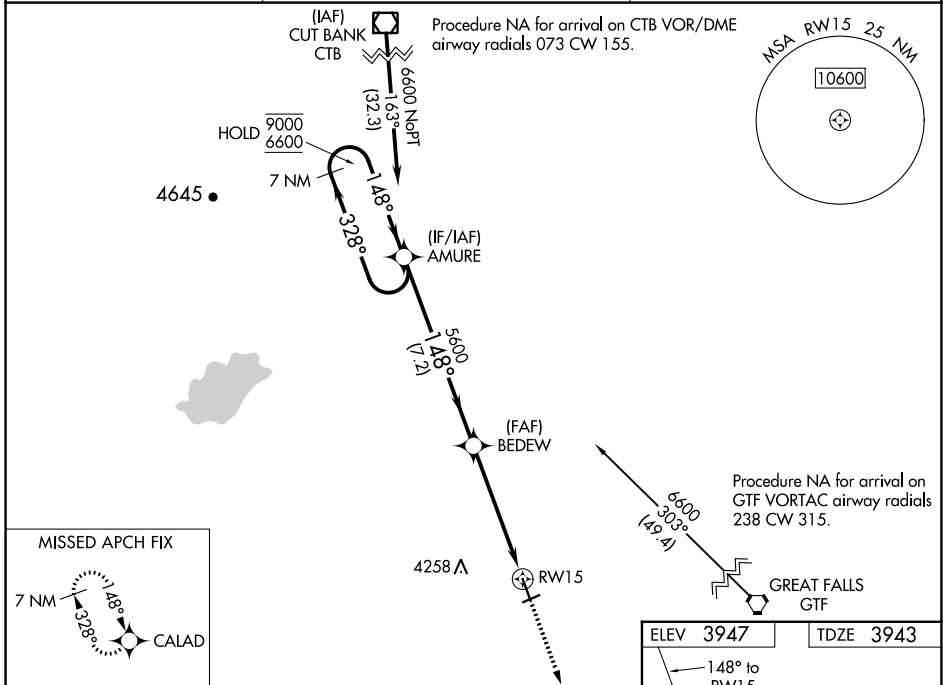
WAAS CH 70443 W15A	APP CRS 148°	Rwy Idg TDZE Apt Elev	5000 3943 3947
--	------------------------	-----------------------------	---

RNAV (GPS) RWY 15

CHOTEAU (CII)

RNP APCH.	MISSED APPROACH: Climb to 6200 direct CALAD and hold.
▽ For uncompensated Baro-VNAV systems, LNAV/VNAV ▲ NA below -22° C or above 54° C.	

AWOS-2 119.275	SALT LAKE CITY CENTER 133.4 285.4	UNICOM 122.8 (CTAF) 0
--------------------------	---	---------------------------------



CATEGORY	A	B	C	D
IPV DA	4143-1 200 (200-1)			
LNAV/VNAV DA	4193-1 250 (300-1)			
LNAV MDA	4420-1 477 (500-1)	4420-1 $\frac{3}{8}$ 477 (500-1 $\frac{3}{8}$)		
CIRCLING	4440-1 493 (500-1)	4600-1 $\frac{3}{4}$ 653 (700-1 $\frac{3}{4}$)	4900-3 953 (1000-3)	

NW-1, 22 FEB 2024 to 21 MAR 2024

NW-1, 22 FEB 2024 to 21 MAR 2024

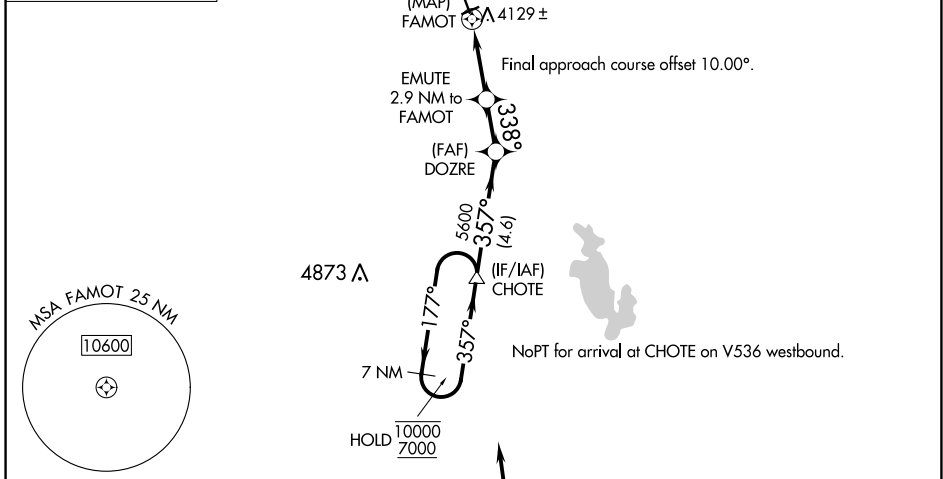
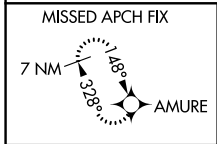
APP CRS 338°	Rwy ldg 5000
	TDZE 3943
	Apt Elev 3947

RNAV (GPS) RWY 33

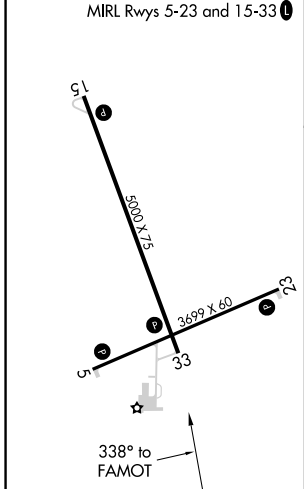
CHOTEAU (CII)

RNP APCH.	MISSED APPROACH: Climb to 6600 direct AMURE and hold.
NA Rwy 33 helicopter visibility reduction below 3/4 SM NA.	

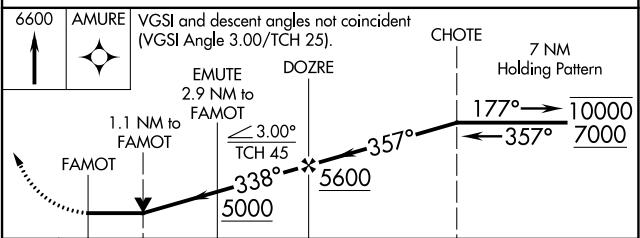
AWOS-2 119.275	SALT LAKE CITY CENTER 133.4 285.4	UNICOM 122.8 (CTAF) ①
--------------------------	---	---------------------------------



ELEV 3947	TDZE 3943
-----------	-----------



6600 AMURE	VGSI and descent angles not coincident (VGSI Angle 3.00/TCH 25).	CHOTE 7 NM Holding Pattern
EMUTE 2.9 NM to FAMOT	DOZRE	
1.1 NM to FAMOT	3.00° TCH 45	177° 10000
FAMOT	338°	357° 7000
	5000	
	5600	
	4.6 NM	



CATEGORY	A	B	C	D
INAV MDA	4380-1	437 (500-1)	4380-1 1/4	437 (500-1 1/4)
CIRCLING	4440-1	493 (500-1)	4600-1 3/4 653 (700-1 3/4)	4900-3 953 (1000-3)

NW-1, 22 FEB 2024 to 21 MAR 2024

NW-1, 22 FEB 2024 to 21 MAR 2024