

APP CRS 184°	Rwy Idg TDZE Apt Elev	N/A N/A 1179
------------------------	-----------------------------	---

RNAV (GPS)-B

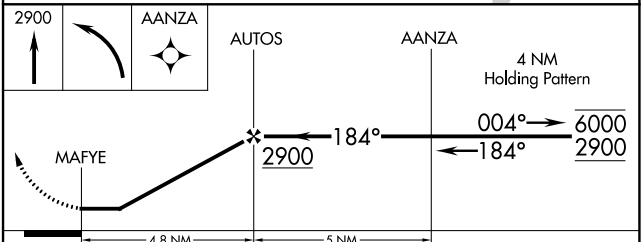
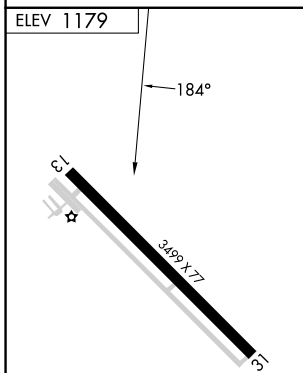
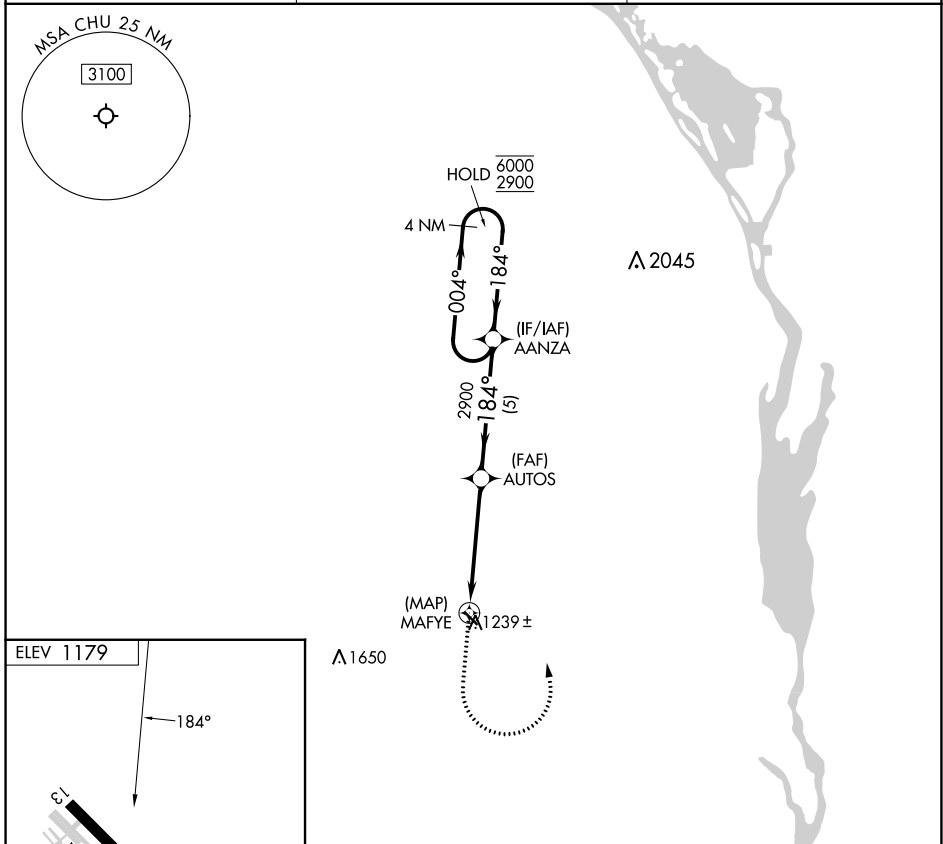
HOUSTON COUNTY (CHU)

RNP APCH - GPS.

Procedure NA at night. Rwy 13 and 31 helicopter visibility reduction below 1 SM NA. Use La Crosse Rgnl altimeter setting.

MISSED APPROACH: Climb to 2900 then left turn direct AANZA and hold.

LSE ASOS 124.95	MINNEAPOLIS CENTER 128.6 363.0	CTAF 122.9
---------------------------	--	----------------------



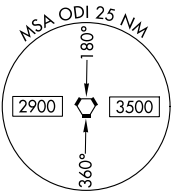
CATEGORY	A	B	C	D
CIRCLING	1820-1	641 (700-1)	NA	

VORTAC ODI 117.9 Chan 126	APP CRS 184°	Rwy Idg TDZE Apt Elev 1179	N/A N/A 1179
---	------------------------	---	---

VOR-A
HOUSTON COUNTY (CHU)

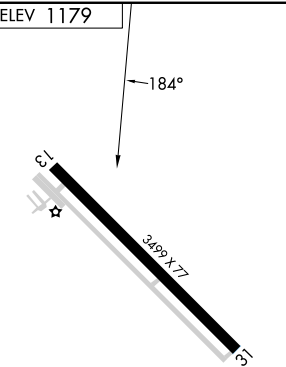
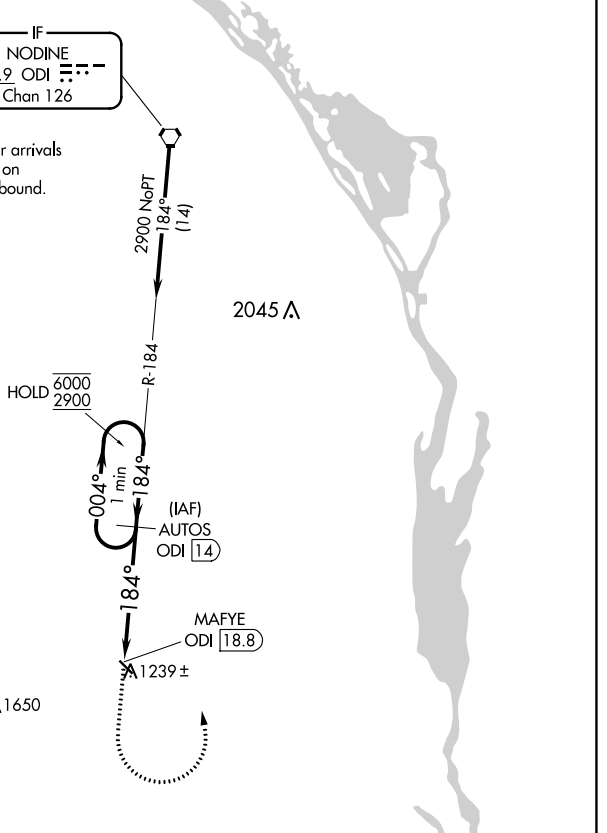
DME required.	Use La Crosse Rgnl altimeter setting. Procedure NA at night.	MISSED APPROACH: Climb to 2900 then left turn on ODI VORTAC R-184 to AUTOS/ODI 14 DME and hold.
▼ ▲ NA		

LSE ASOS 124.95	MINNEAPOLIS CENTER 128.6 363.0	CTAF 122.9 0
---------------------------	--	------------------------



IF
NODINE
117.9 ODI
Chan 126

Procedure NA for arrivals
at ODI VORTAC on
V129 northwest bound.



2900 ↑	AUTOS ODI 14 R-184	AUTOS ODI 14	One Minute Holding Pattern
	MAFYE ODI 18.8	6000 2900	
4.8 NM			
CATEGORY	A	B	C D
CIRCLING	1820-1	641 (700-1)	NA

MIRL Rwy 13-31 0

NC-1, 22 FEB 2024 to 21 MAR 2024

NC-1, 22 FEB 2024 to 21 MAR 2024