

(MAD.DPK3) 23334

AL-460 (FAA)

# DEER PARK THREE ARRIVAL

WINDSOR LOCKS, CONNECTICUT

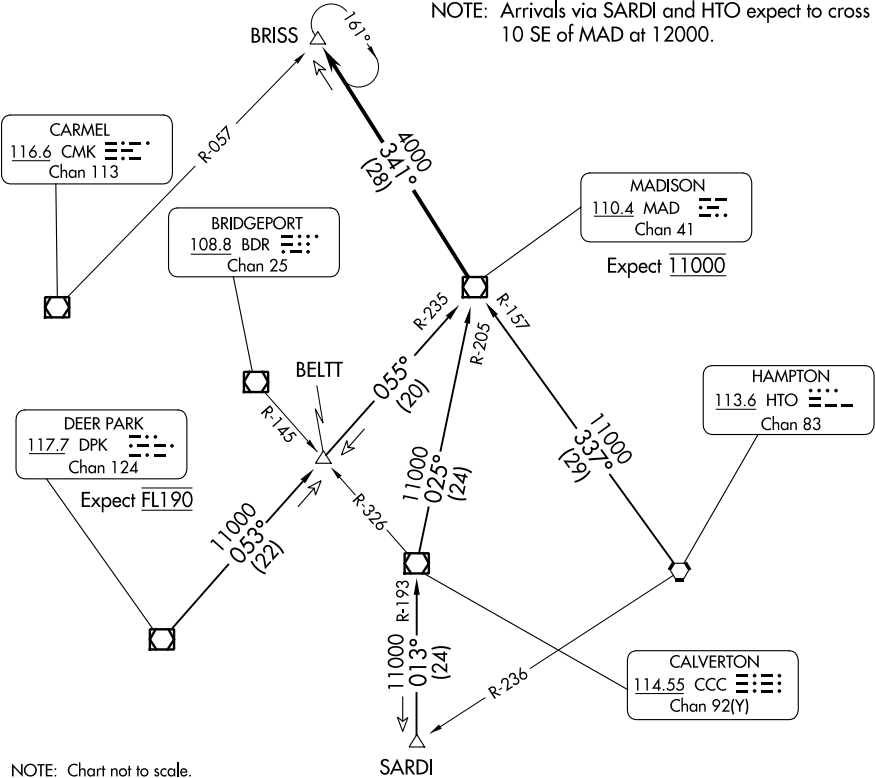
BRADLEY APP CON  
123.95 290.55 (061-240)  
125.35 281.5 (241-060)  
BDL D-ATIS  
118.15

WESTFIELD-BARNES  
RGNL

WESTOVER ARB/  
METROPOLITAN

BRADLEY  
INTL

NOTE: Applicable to arrivals 11000 and above.  
NOTE: RADAR required.  
NOTE: Arrivals via SARDI and HTO expect to cross  
10 SE of MAD at 12000.



NE-1, 22 FEB 2024 to 21 MAR 2024

NE-1, 22 FEB 2024 to 21 MAR 2024

## ARRIVAL ROUTE DESCRIPTION

**DEER PARK TRANSITION (DPK.DPK3):** From over DPK VOR/DME on DPK R-053 to BELTT INT, then on MAD R-235 to MAD VOR/DME. Thence . . .

**HAMPTON TRANSITION (HTO.DPK3):** From over HTO VORTAC on HTO R-337 and MAD R-157 to MAD VOR/DME. Thence . . .

**SARDI TRANSITION (SARDI.DPK3):** From over SARDI INT on CCC R-193 to CCC VOR/DME, then on CCC R-025 and MAD R-205 to MAD VOR/DME. Thence . . .

From over MAD VOR/DME on MAD R-341 to BRISS INT/MAD 28 DME.  
Expect radar vectors to final approach course prior to BRISS INT.

# DEER PARK THREE ARRIVAL

WINDSOR LOCKS, CONNECTICUT

(MAD.DPK3) 25OCT07

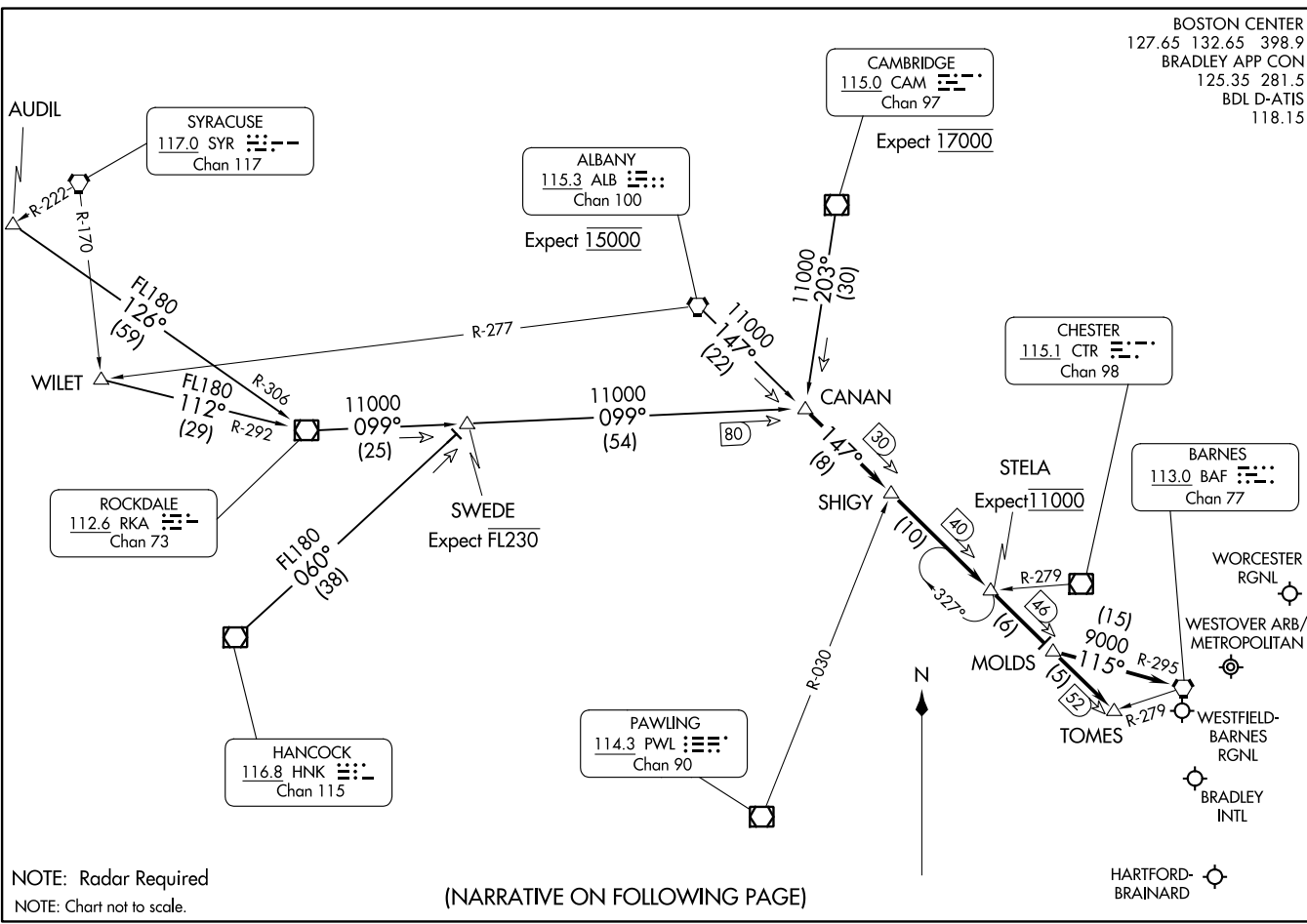
STELA ONE ARRIVAL  
(STELA,STELA1) 31MAY12

(STELA,STELA1) 23334  
STELA ONE ARRIVAL

BOSTON CENTER  
127.65 132.65 398.9  
BRADLEY APP CON  
125.35 281.5  
BDL D-ATIS  
118.15

AL-460 (FAA)

WINDSOR LOCKS, CONNECTICUT



NOTE: Radar Required  
NOTE: Chart not to scale.

(NARRATIVE ON FOLLOWING PAGE)

WINDSOR LOCKS, CONNECTICUT

ARRIVAL ROUTE DESCRIPTION

ALBANY TRANSITION (ALB.STELA1): From over ALB VORTAC via ALB R-147 to CANAN INT. Thence. . . .

AUDIL TRANSITION (AUDIL.STELA1): From over AUDIL INT via RKA R-306 to RKA VOR/DME, then via RKA R-099 to CANAN INT. Thence. . . .

CAMBRIDGE TRANSITION (CAM.STELA1): From over CAM VOR/DME via CAM R-203 to CANAN INT. Thence. . . .

HANCOCK TRANSITION (HНК.STELA1): From over HНК VOR/DME via HНК R-060 to SWEDE INT, then via RKA R-099 to CANAN INT. Thence. . . .

WILET TRANSITION (WILET.STELA1): From over WILET INT via RKA R-292 to RKA VOR/DME, then via RKA R-099 TO CANAN INT. Thence. . . .

KBDL and KHFD ARRIVALS: From over CANAN INT via ALB R-147 to TOMES INT. Expect radar vectors to final approach course prior to TOMES INT.

KBAF, KCEF and KORH ARRIVALS: From over CANAN INT via ALB R-147 to MOLDS INT. Then via BAF R-295 to BAF VORTAC. Expect radar vectors to final approach course prior to BAF VORTAC.

NE-1, 22 FEB 2024 to 21 MAR 2024

NE-1, 22 FEB 2024 to 21 MAR 2024