

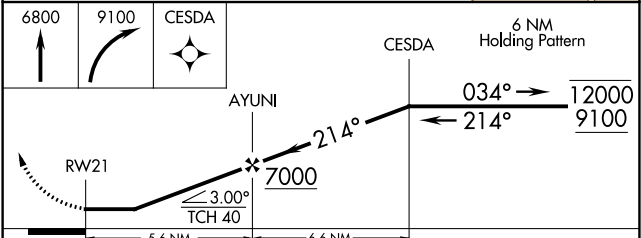
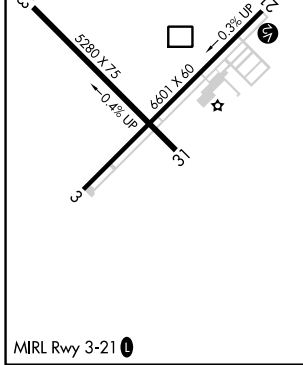
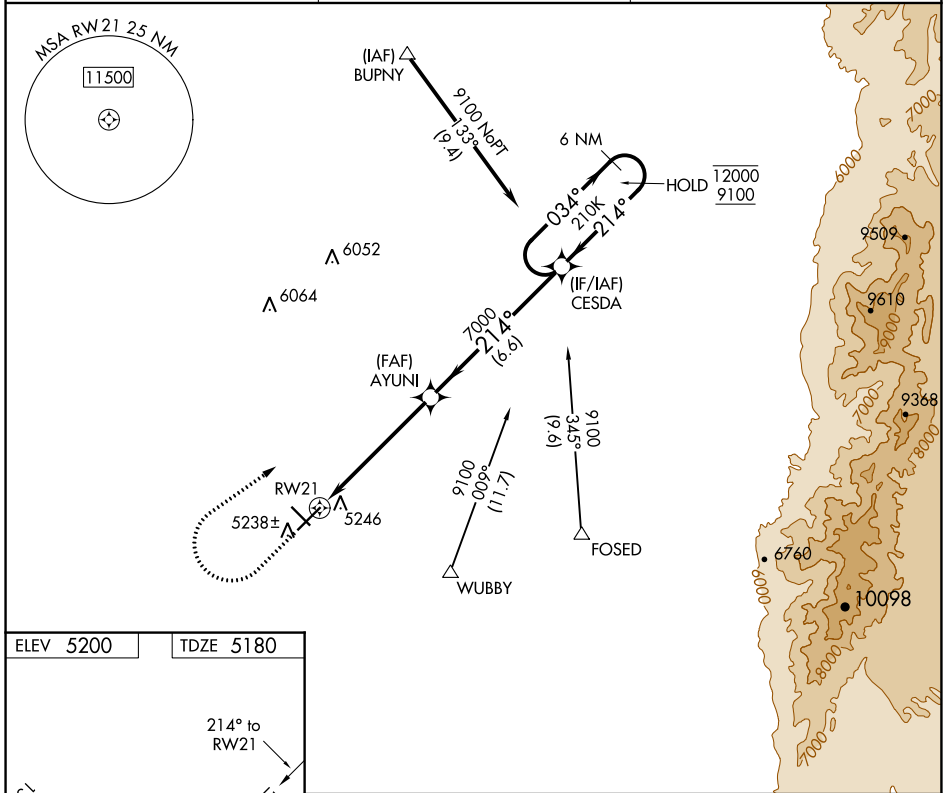
APP CRS 214°	Rwy Idg TDZE Apt Elev	6601 5180 5200
------------------------	-----------------------------	---

RNAV (GPS) RWY 21

BELEN RGNL (BRG)

RNP APCH ▼ Procedure NA at night. Rwy 21 helicopter visibility reduction below 1 SM NA.	MISSED APPROACH: Climb to 6800 then climbing right turn to 9100 direct CESDA and hold.
---	--

AWOS-3PT 118.55	ALBUQUERQUE APP CON 123.9 354.1	UNICOM 122.8 (CTAF)
---------------------------	---	-------------------------------



CATEGORY	A	B	C	D
LNAV MDA	5560-1 380 (400-1)			NA
<input checked="" type="checkbox"/> CIRCLING	5600-1 400 (400-1)	5660-1 460 (500-1)	5660-1½ 460 (500-1½)	NA

SW-1, 22 FEB 2024 to 21 MAR 2024

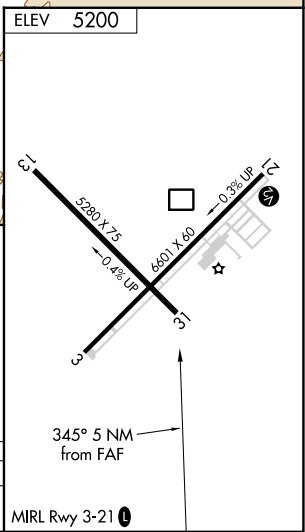
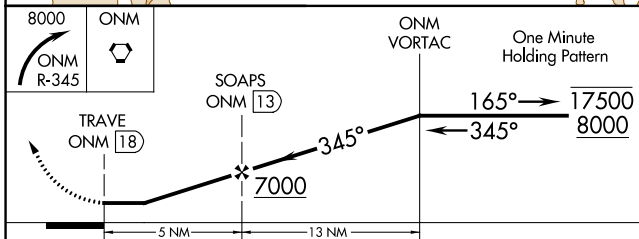
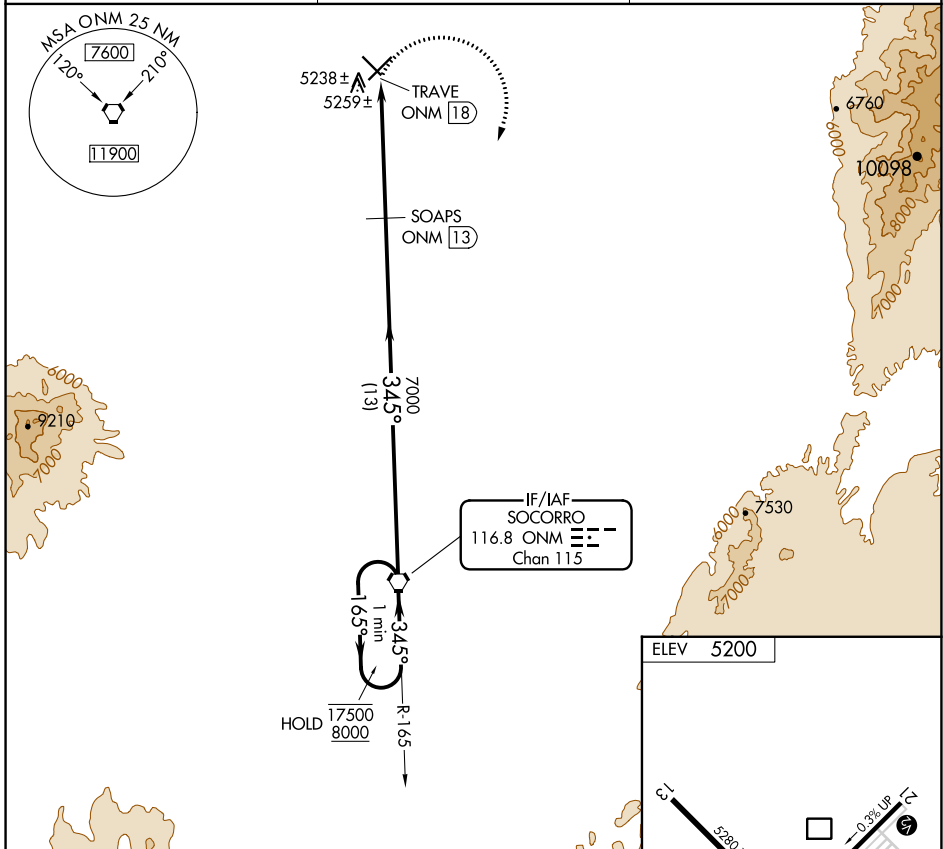
SW-1, 22 FEB 2024 to 21 MAR 2024

VORTAC ONM 116.8 Chan 115	APP CRS 345°	Rwy Idg TDZE Apt Elev	N/A N/A 5200
---	------------------------	-----------------------------	---

VOR-A
BELEN RGNL (BRG)

DME required. ▼	MISSED APPROACH: Climbing right turn to 8000 on ONM VORTAC R-345 to ONM VORTAC and hold.
--------------------	--

AWOS-3PT 118.55	ALBUQUERQUE APP CON 123.9 354.1	UNICOM 122.8 (CTAF) 0
---------------------------	---	---------------------------------



CATEGORY	A	B	C	D
CIRCLING	5680-1	480 (500-1)	5680-1½ 480 (500-1½)	NA

SW-1, 22 FEB 2024 to 21 MAR 2024

SW-1, 22 FEB 2024 to 21 MAR 2024