

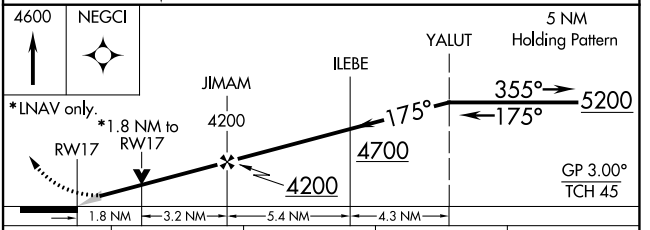
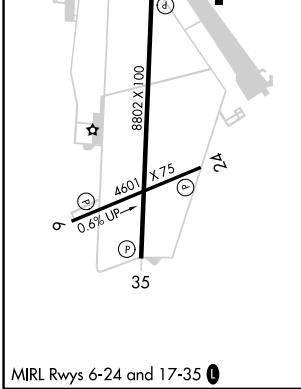
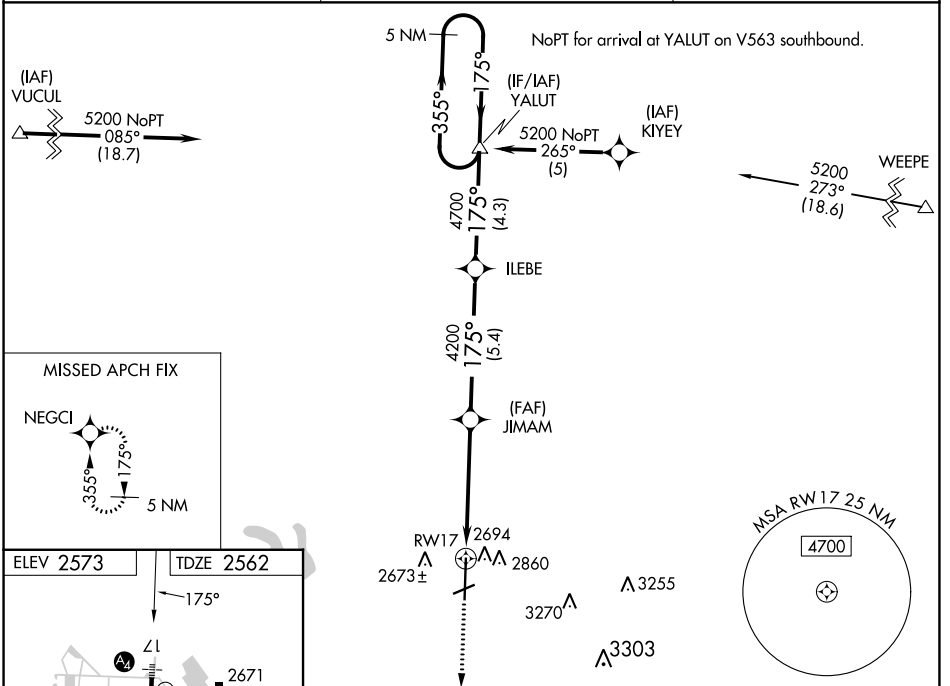
WAAS CH 97618 W17A	APP CRS 175°	Rwy ldg TDZE 8802 2562 Apt Elev 2573
--	------------------------	--

RNAV (GPS) RWY 17

BIG SPRING McMAHON-WRINKLE (BPG)

RNP APCH.	SSALS 	MISSED APPROACH: Climb to 4600 direct NEGCI and hold.
<p>⚠ Inop table does not apply to LNAV/VNAV and LNAV Cat C. When local altimeter setting not received, use Midland Intl Air and Space Port altimeter setting: increase all DA 130 feet and all MDA 140 feet; increase LPV and LNAV/VNAV all Cats and LNAV Cat C and D visibility ½ SM. Baro-VNAV NA when using Midland Intl Air and Space Port altimeter setting. VDP NA with Midland Intl Air and Space Port altimeter setting. For uncompensated Baro-VNAV systems, LNAV/VNAV NA below -20°C or above 43°C.</p>		

AWOS-3PT 118.025	FORT WORTH CENTER 133.7 350.2	UNICOM 122.8 (CTAF)
----------------------------	---	-------------------------------



CATEGORY	A	B	C	D
LPV DA	2812-1 250 (300-1)			
LNAV/VNAV DA	3040-1¼ 478 (500-1¼)			
LNAV MDA	3160-¾ 598 (600-¾)		3160-1½ 598 (600-1½)	
			3160-1¾ 598 (600-1¾)	

SC-2, 22 FEB 2024 to 21 MAR 2024

SC-2, 22 FEB 2024 to 21 MAR 2024

WAAS CH 45632 W24A	APP CRS 240°	Rwy Idg TDZE Apt Elev	4601 2573 2573
--	------------------------	-----------------------------	---

RNAV (GPS) RWY 24

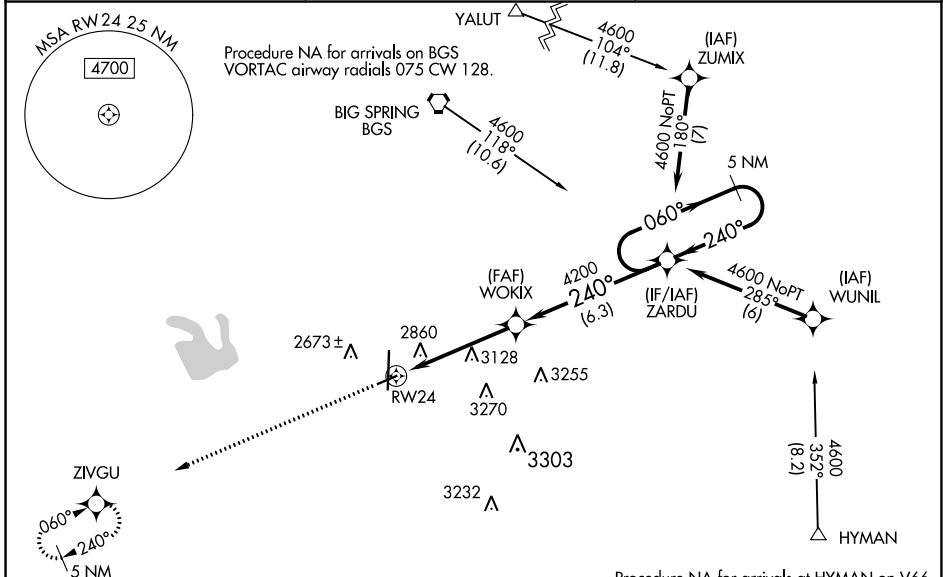
BIG SPRING McMAHON-WRINKLE (BPG)

RNP APCH.

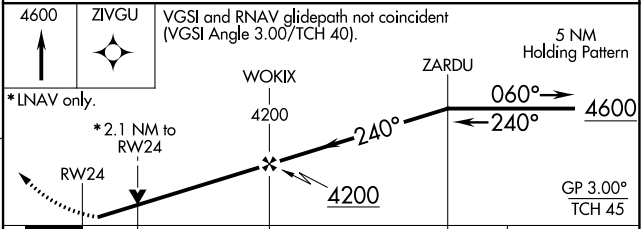
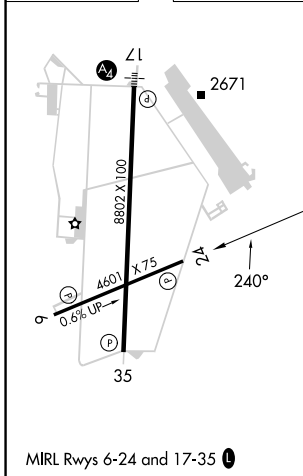
⚠ For uncompensated Baro-VNAV systems, LNAV/VNAV NA below -20°C or above 54°C. When local altimeter setting not received, use Midland Intl Air and Space Port altimeter setting: increase all DA 130 feet and all MDA 140 feet; increase LPV and LNAV/VNAV Cats A/B visibility ½ SM, and LNAV Cat A visibility ¼ SM. Baro-VNAV and VDP NA with Midland Intl Air and Space Port altimeter setting. Rwy 24 helicopter visibility reduction below ¾ SM NA.

MISSED APPROACH: Climb to 4600 direct ZIVGU and hold.

AWOS-3PT 118.025	FORT WORTH CENTER 133.7 350.2	UNICOM 122.8 (CTAF) 📻
----------------------------	---	--



ELEV 2573	TDZE 2573
-----------	-----------



CATEGORY	A	B	C	D
LPV DA	2823-¾	250 (300-¾)		NA
LNAV/VNAV DA	3236-2¼	663 (700-2¼)		NA
LNAV MDA	3380-1 807 (900-1)	3380-1¼ 807 (900-1¼)		NA

SC-2, 22 FEB 2024 to 21 MAR 2024

SC-2, 22 FEB 2024 to 21 MAR 2024

WAAS CH 99418 W35A	APP CRS 355°	Rwy Idg TDZE Apt Elev	8802 2563 2573
--	------------------------	-----------------------------	---

RNAV (GPS) RWY 35

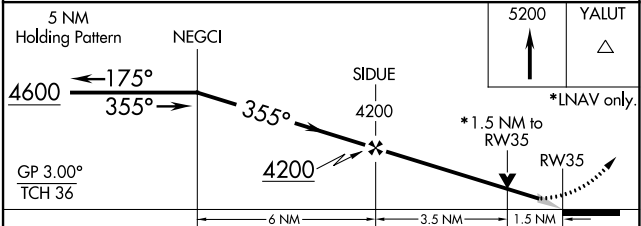
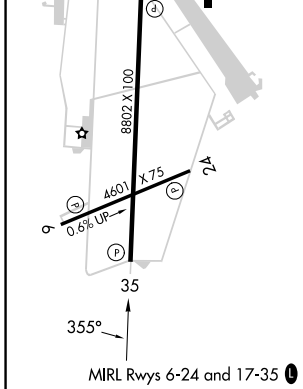
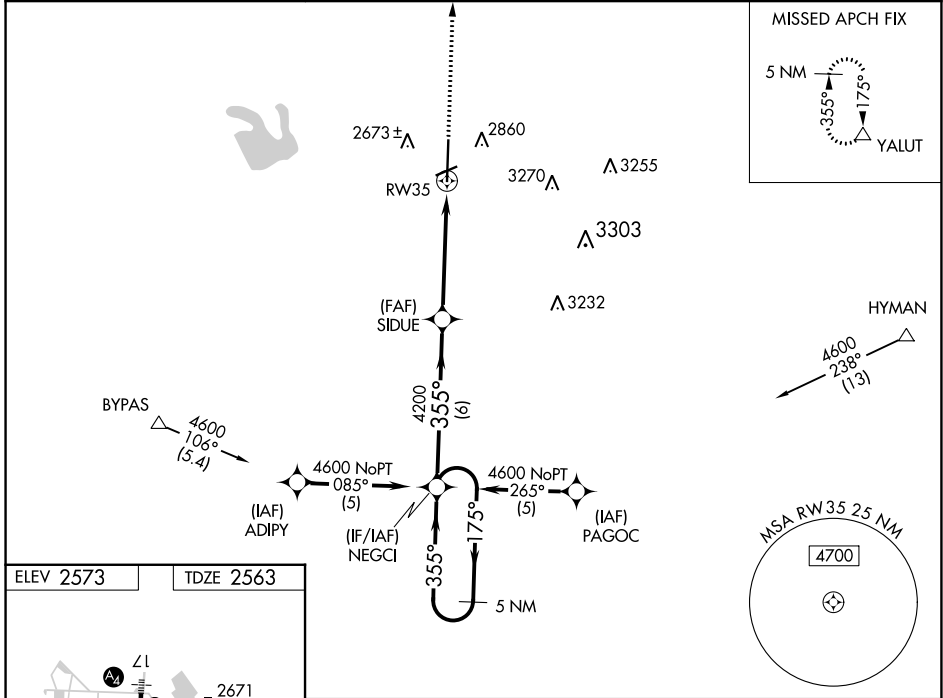
BIG SPRING McMAHON-WRINKLE (BPG)

RNP APCH.

⚠ Baro-VNAV NA when using Midland Intl Air and Space Port altimeter setting. For uncompensated Baro-VNAV systems, LNAV/VNAV NA below -20°C or above 43°C. VDP NA with Midland Intl Air and Space Port altimeter setting. When local altimeter setting not received, use Midland Intl Air and Space Port altimeter setting: increase all DA 130 feet and all MDA 140 feet; increase LPV all Cats visibility ¼ SM, LNAV/VNAV all Cats visibility ½ SM and LNAV Cat C and D visibility ½ SM.

MISSED APPROACH: Climb to 5200 direct YALUT and hold.

AWOS-3PT 118.025	FORT WORTH CENTER 133.7 350.2	UNICOM 122.8 (CTAF) 0
----------------------------	---	---------------------------------



CATEGORY	A	B	C	D
LPV DA	2813-1 250 (300-1)			
LNAV/VNAV DA	2979-1½ 416 (500-1½)			
LNAV MDA	3060-1 497 (500-1)	3060-1¼ 497 (500-1¼)	3060-1½ 497 (500-1½)	3060-1½ 497 (500-1½)

WAAS CH 86332 W06A	APP CRS 060°	Rwy Idg TDZE Apt Elev	4601 2563 2573
--	------------------------	-----------------------------	---

RNAV (GPS) RWY 6

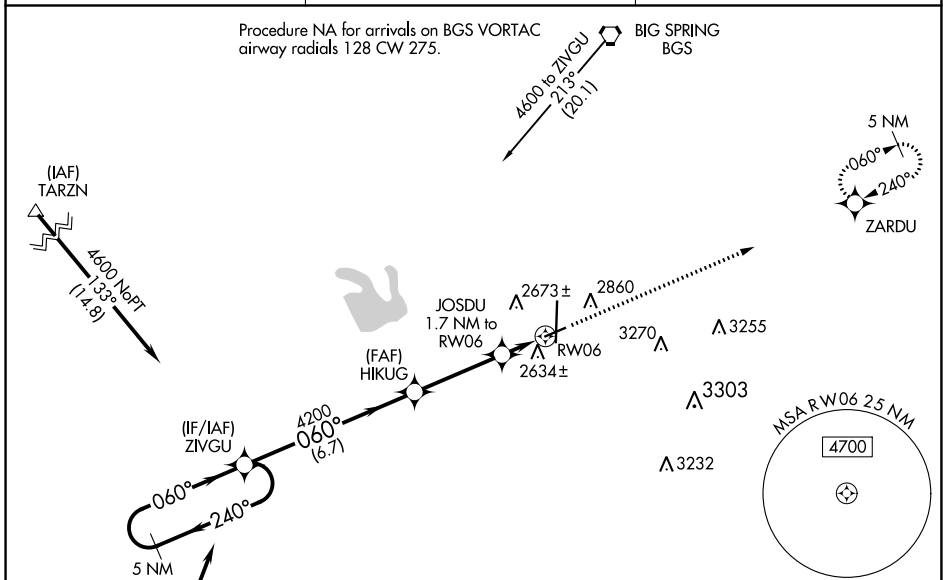
BIG SPRING McMAHON-WRINKLE (BPG)

RNP APCH.

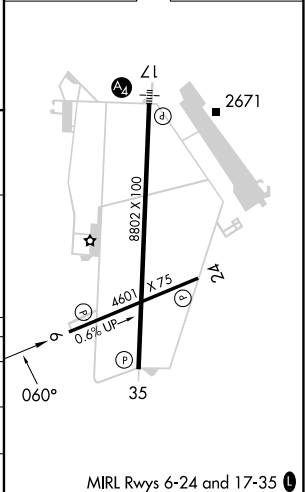
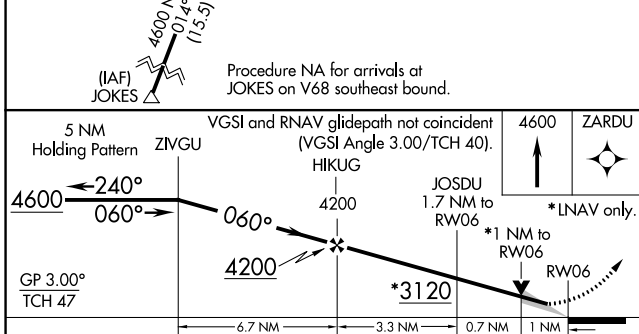
▼ For uncompensated Baro-VNAV systems, LNAV/VNAV NA below -20°C or above 54°C.
 ▲ When local altimeter setting not received, use Midland Intl Air and Space Port altimeter setting and increase all DA 130 feet, all MDA 140 feet, and increase LPV all Cats visibility 3/8 mile and LNAV/VNAV all Cats visibility 1/2 mile. Baro-VNAV and VDP NA with Midland Intl Air and Space Port altimeter setting.

MISSED APPROACH: Climb to 4600 direct ZARDU and hold.

AWOS-3PT 118.025	FORT WORTH CENTER 133.7 350.2	UNICOM 122.8 (CTAF) 0
----------------------------	---	---------------------------------



ELEV 2573	TDZE 2563
-----------	-----------



CATEGORY	A	B	C	D
LPV DA	2763-3/4	200 (200-3/4)		NA
LNAV/VNAV DA	2813-3/4	250 (300-3/4)		NA
LNAV MDA	2900-1	337 (400-1)		NA

SC-2, 22 FEB 2024 to 21 MAR 2024


SC-2, 22 FEB 2024 to 21 MAR 2024

VORTAC BGS 117.2 Chan 119	APP CRS 180°	Rwy Idg 8802 TDZE 2562 Apt Elev 2573
---	------------------------	---

VOR/DME RWY 17


BIG SPRING McMAHON-WRINKLE (BPG)

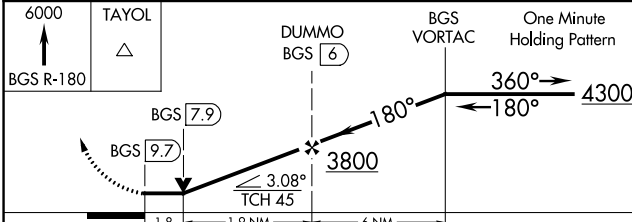
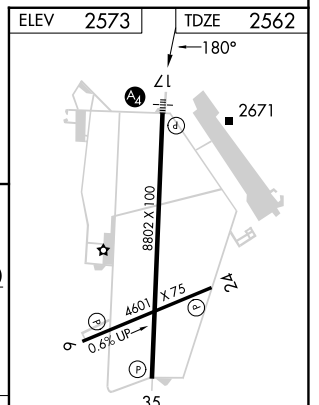
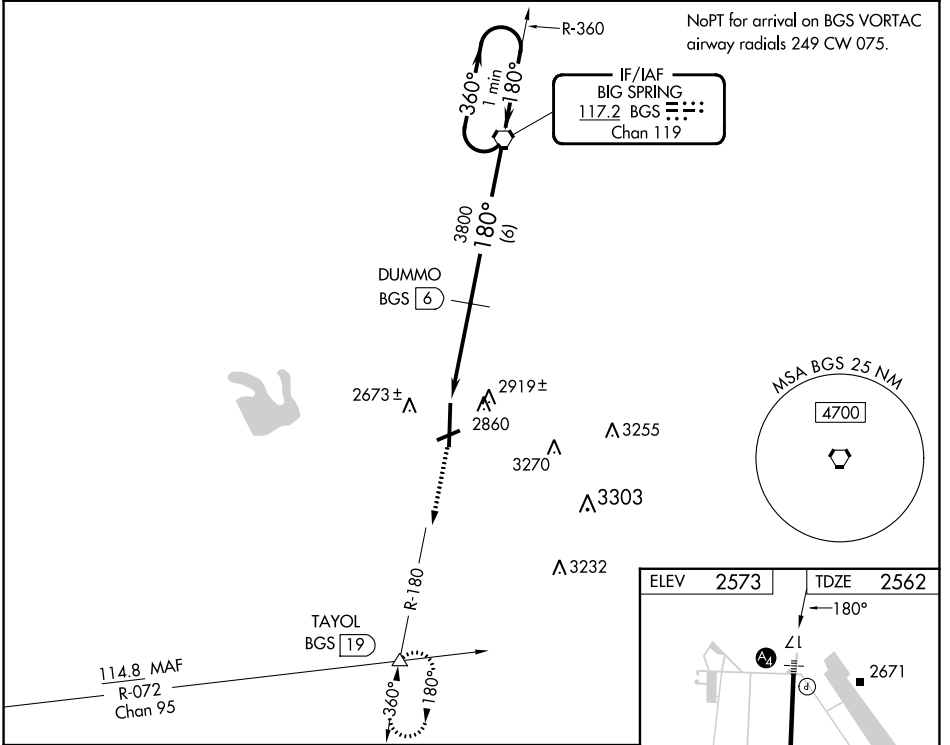
⚠ When VGSI inoperative, circling Rwy 6 NA at night. Circling NA east of Rwy 17-35. Inoperative table does not apply to S-17 Cat C, when using Midland Intl Air and Space Port altimeter setting inoperative table does not apply to S-17 Cat B. VDP NA when using Midland Intl Air and Space Port altimeter setting. When local altimeter setting not received, use Midland Intl Air and Space Port altimeter setting and increase all MDA 140 feet, increase S-17 Cats B, C, and D and Circling Cats C and D visibility ½ mile, Circling Cat B visibility ¼ mile.


SSALS
 MISSED APPROACH: Climb to 6000 via BGS VORTAC R-180 to TAYOL INT/BGS 19 DME and hold, continue climb-in-hold to 6000.

AWOS-3PT
118.025

FORT WORTH CENTER
133.7 350.2

UNICOM
122.8 (CTAF) 



CATEGORY	A	B	C	D
S-17	3180-¾ 618 (700-¾)		3180-1¼ 618 (700-1¼)	3180-2 618 (700-1)
 CIRCLING	3180-1 607 (700-1)		3180-1¼ 607 (700-1¼)	3180-2 607 (700-2)

MIRL Rwy 6-24 and 17-35 

SC-2, 22 FEB 2024 to 21 MAR 2024

SC-2, 22 FEB 2024 to 21 MAR 2024

VORTAC BGS 117.2 Chan 119	APP CRS 359°	Rwy Idg TDZE 2563 Apt Elev 2573	8802 2563 2573
---	------------------------	---	---

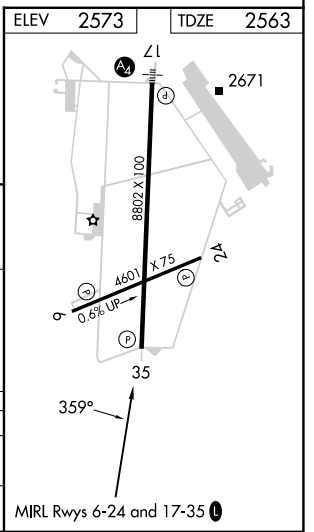
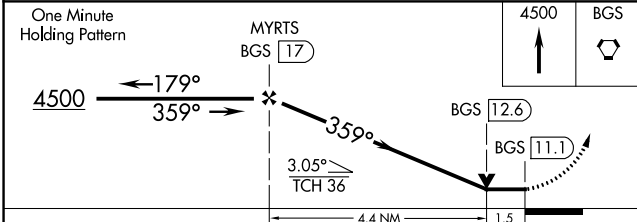
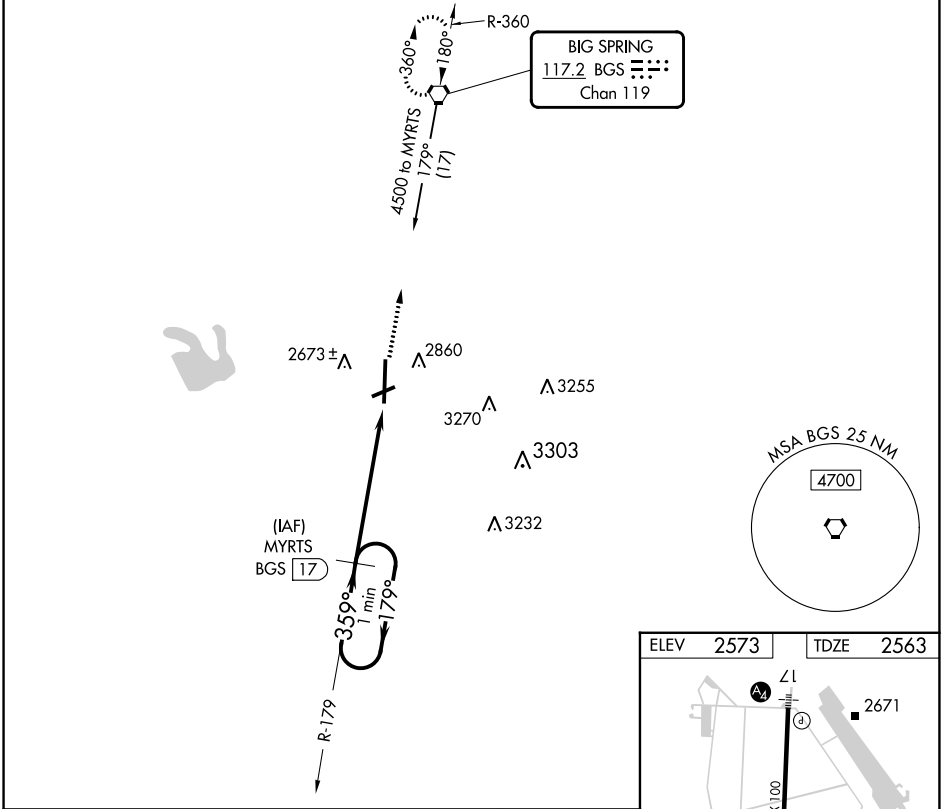
VOR/DME RWY 35

BIG SPRING McMAHON-WRINKLE (BPG)

⚠ When VGS1 inoperative, Circling Rwy 6 NA at night. Circling NA east of Rwy 17-35.
 ⚠ VDP NA when using Midland Intl Air and Space Port altimeter setting. When local altimeter setting not received, use Midland Intl Air and Space Port altimeter setting and increase all MDA 140 feet, increase S-35 Cats C and D and Circling Cats C and D visibility ¼ mile.

MISSED APPROACH: Climb to 4500 direct to BGS VORTAC and hold.

AWOS-3PT 118.025	FORT WORTH CENTER 133.7 350.2	UNICOM 122.8 (CTAF) 0
----------------------------	---	---------------------------------



CATEGORY	A	B	C	D
S-35	3080-1	517 (600-1)	3080-1½ 517 (600-1½)	3080-1¾ 517 (600-1¾)
C CIRCLING	3080-1	507 (600-1)	3080-1½ 507 (600-1½)	3140-2 567 (600-2)

SC-2, 22 FEB 2024 to 21 MAR 2024

SC-2, 22 FEB 2024 to 21 MAR 2024