

RNAV 1 - DME/DME/IRU or GPS.

RADAR required for non-GPS equipped aircraft.

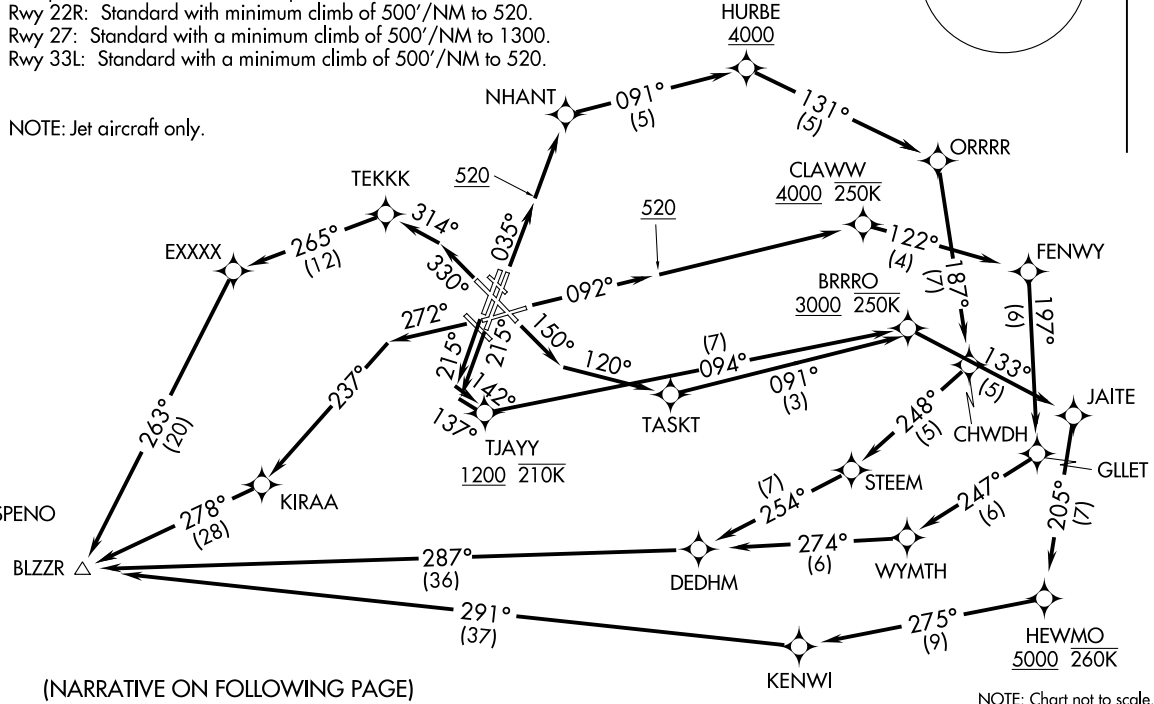
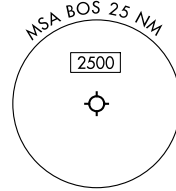
TOP ALTITUDE:
5000

BOSTON DEP CON
133.0
D-ATIS
135.0
CLNC DEL
121.65 257.8
CPDLC
GND CON
121.75 121.9
BOSTON TOWER
128.8 257.8 (WEST)
132.225 257.8 (EAST)

TAKEOFF MINIMUMS:

Rwy 4L, 14, 15L, 32, 33R: NA-ATC.
Rwy 4R: Standard with minimum climb of 500'/NM to 520.
Rwy 9: Standard with minimum climb of 500'/NM to 520.
Rwy 15R: Standard with minimum climb of 500'/NM to 520.
Rwy 22L: 300-1 with minimum climb of 500'/NM to 520, or standard with minimum climb of 500'/NM to 520 if tower reports no tall vessels in the departure area.
Rwy 22R: Standard with minimum climb of 500'/NM to 520.
Rwy 27: Standard with a minimum climb of 500'/NM to 1300.
Rwy 33L: Standard with a minimum climb of 500'/NM to 520.

NOTE: Jet aircraft only.



(NARRATIVE ON FOLLOWING PAGE)

NOTE: Chart not to scale.

BLZZR SIX DEPARTURE (RNAV)
(BLZZR6.BLZZR) 30NOV23

GENERAL EDWARD LAWRENCE LOGAN INTL (BOS)
BOSTON, MASSACHUSETTS

BLZZR6.BLZZR) 23334
BLZZR SIX DEPARTURE (RNAV)

GENERAL EDWARD LAWRENCE LOGAN INTL (BOS)
AL-58 (FAA)
BOSTON, MASSACHUSETTS



DEPARTURE ROUTE DESCRIPTION

TAKEOFF RUNWAY 4R: Climb on heading 035° to 520, then direct NHANT, then on track 091° to cross HURBE at or above 4000, thence....

TAKEOFF RUNWAY 9: Climb on heading 092° to 520, direct to cross CLAWW at or above 4000 and at or below 250K, thence....

TAKEOFF RUNWAY 15R: Climb on heading 150° to intercept course 120° to TASKT, do not exceed 210K until 520' MSL, thence....

TAKEOFF RUNWAY 22L: Climb on heading 215° to intercept course 137° to TJAYY at or above 1200 and at or below 210K, thence....

TAKEOFF RUNWAY 22R: Climb on heading 215° to intercept course 142° to TJAYY at or above 1200 and at or below 210K, thence....

TAKEOFF RUNWAY 27: Climb on heading 272° to intercept course 237° to KIRAA, thence....

TAKEOFF RUNWAY 33L: Climb on heading 330° to intercept course 314° to TEKKK, thence....

...on depicted route to BLZZR. Maintain 5000. Expect clearance to filed altitude within ten minutes after departure.

NE-1, 22 FEB 2024 to 21 MAR 2024

NE-1, 22 FEB 2024 to 21 MAR 2024

(BRUWN7.BRUWN) 23334

GENERAL EDWARD LAWRENCE LOGAN INTL (BOS)

BRUWN SEVEN DEPARTURE (RNAV)

AL-58 (FAA)

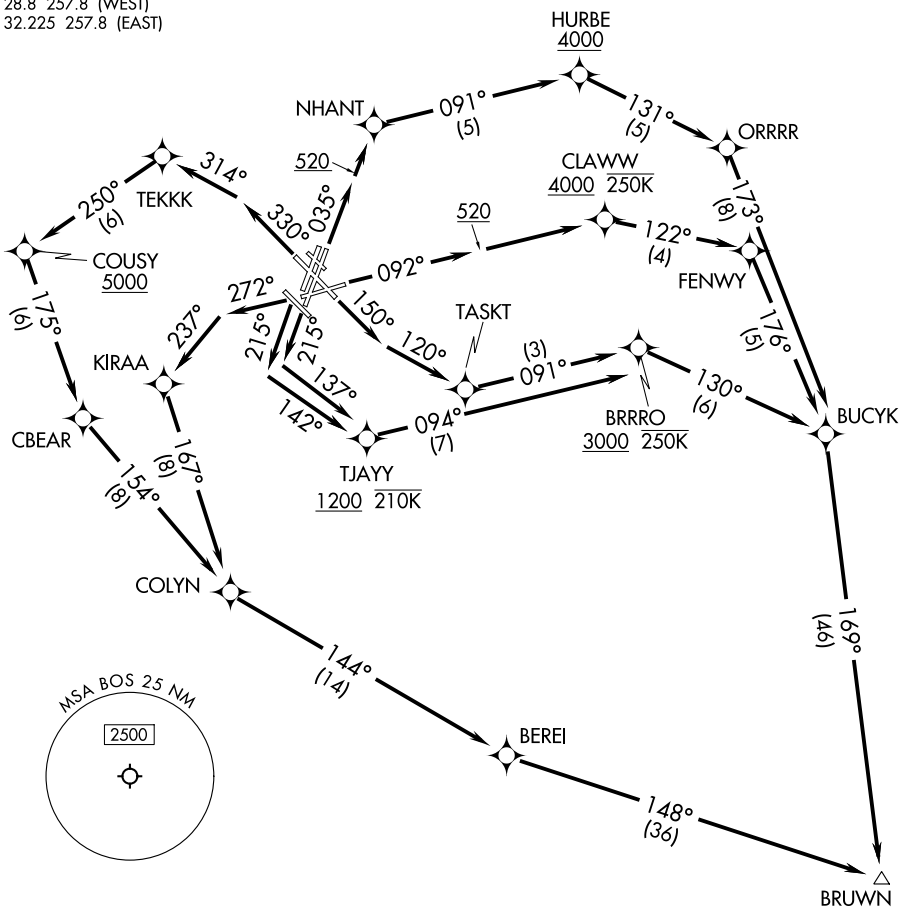
BOSTON, MASSACHUSETTS

BOSTON DEP CON
 133.0
 D-ATIS 135.0
 CLNC DEL 121.65 257.8
 CPDLC
 GND CON 121.75 121.9
 BOSTON TOWER
 128.8 257.8 (WEST)
 132.225 257.8 (EAST)

RNAV 1-DME/DME/IRU or GPS.

RADAR required for non-GPS equipped aircraft.

TOP ALTITUDE:
5000



NE-1, 22 FEB 2024 to 21 MAR 2024

NE-1, 22 FEB 2024 to 21 MAR 2024

NOTE: Jet aircraft only.

TAKEOFF MINIMUMS:

- Rwy 4L, 14, 15L, 32, 33R: NA-ATC.
- Rwy 4R, 9, 15R, 22R, 33L: Standard with minimum climb of 500'/NM to 520.
- Rwy 22L: 300-1 with minimum climb of 500'/NM to 520, or standard with minimum climb of 500'/NM to 520 if tower reports no tall vessels in the departure area.
- Rwy 27: Standard with minimum climb of 500'/NM to 1300.

NANTUCKET
 ACK

(NARRATIVE ON FOLLOWING PAGE)

NOTE: Chart not to scale.

BRUWN SEVEN DEPARTURE (RNAV)

BOSTON, MASSACHUSETTS

(BRUWN7.BRUWN) 30NOV23

GENERAL EDWARD LAWRENCE LOGAN INTL (BOS)



DEPARTURE ROUTE DESCRIPTION

TAKEOFF RUNWAY 4R: Climb on heading 035° to 520, then direct NHANT, then on track 091° to cross HURBE at or above 4000, thence....

TAKEOFF RUNWAY 9: Climb on heading 092° to 520, then direct to cross CLAWW at or above 4000 and at or below 250K, thence....

TAKEOFF RUNWAY 15R: Climb on heading 150° to intercept course 120° to TASKT, do not exceed 210K until 520' MSL, thence....

TAKEOFF RUNWAY 22L: Climb on heading 215° to intercept course 137° to cross TJAYY at or above 1200 and at or below 210K, thence....

TAKEOFF RUNWAY 22R: Climb on heading 215° to intercept course 142° to cross TJAYY at or above 1200 and at or below 210K, thence....

TAKEOFF RUNWAY 27: Climb on heading 272° to intercept course 237° to KIRAA, thence....

TAKEOFF RUNWAY 33L: Climb on heading 330° to intercept course 314° to TEKKE, thence....

...on depicted route to BRUWN. Maintain 5000. Expect clearance to filed altitude/flight level within 10 minutes after departure.

NE-1, 22 FEB 2024 to 21 MAR 2024

NE-1, 22 FEB 2024 to 21 MAR 2024

CELTIC SEVEN DEPARTURE (RNAV) (CELTK7.CELTK) 30NOV23 BOSTON, MASSACHUSETTS GENERAL EDWARD LAWRENCE LOGAN INTL (BOS)

BOSTON DEP CON
133.0
D-ATIS 135.0
CLNC DEL
121.65 257.8
CPDLC
GND CON
121.75 121.9
BOSTON TOWER
128.8 257.8 (WEST)
132.225 257.8 (EAST)

RNAV 1 - DME/DME/IRU or GPS.
RADAR required for non-GPS equipped aircraft.

TOP ALTITUDE:
5000

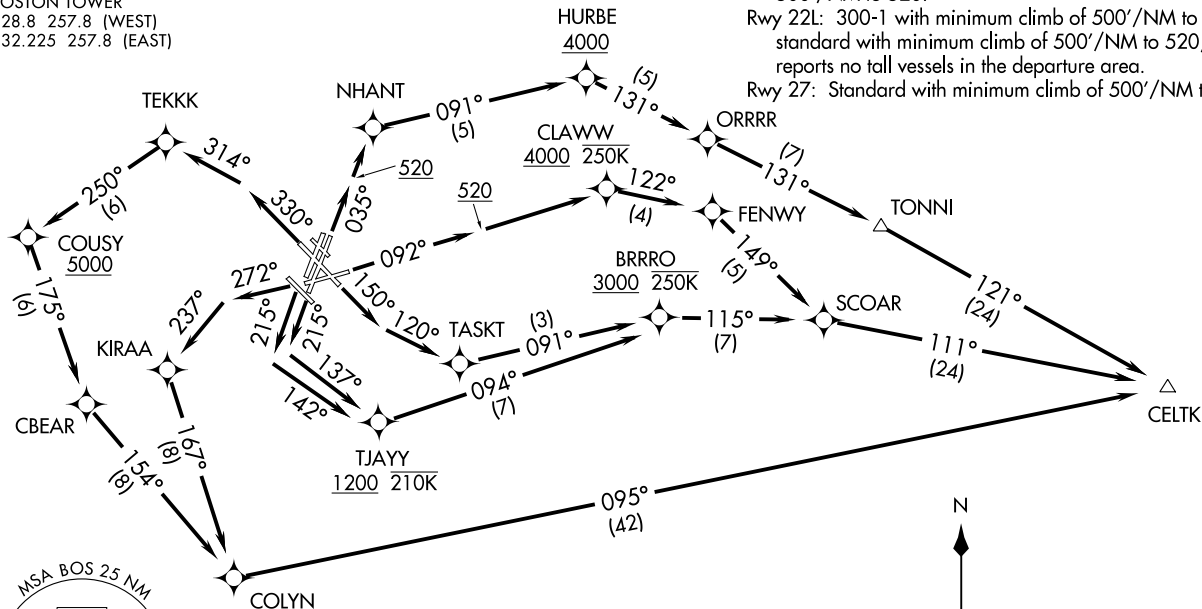
TAKEOFF MINIMUMS:

Rwy 4L, 14, 15L, 32, 33R: NA-ATC.

Rwy 4R, 9, 15R, 22R, 33L: Standard with minimum climb of 500'/NM to 520.

Rwy 22L: 300-1 with minimum climb of 500'/NM to 520, or standard with minimum climb of 500'/NM to 520, if tower reports no tall vessels in the departure area.

Rwy 27: Standard with minimum climb of 500'/NM to 1300.



CELTIC SEVEN DEPARTURE (RNAV) 23334 GENERAL EDWARD LAWRENCE LOGAN INTL (BOS) AL-58 (FAA) BOSTON, MASSACHUSETTS

(NARRATIVE ON FOLLOWING PAGE)

NOTE: Jet aircraft only.

NOTE: Chart not to scale.



DEPARTURE ROUTE DESCRIPTION

TAKEOFF RUNWAY 4R: Climb on heading 035° to 520, then direct NHANT, then on track 091° to cross HURBE at or above 4000, thence....

TAKEOFF RUNWAY 9: Climb on heading 092° to 520, then direct CLAWW at or above 4000 and at or below 250K, thence....

TAKEOFF RUNWAY 15R: Climb on heading 150° to intercept course 120° to TASKT, do not exceed 210K until 520' MSL, thence....

TAKEOFF RUNWAY 22L: Climb on heading 215° to intercept course 137° to cross TJAYY at or above 1200 and at or below 210K, thence....

TAKEOFF RUNWAY 22R: Climb on heading 215° to intercept course 142° to cross TJAYY at or above 1200 and at or below 210K, thence....

TAKEOFF RUNWAY 27: Climb on heading 272° to intercept course 237° to KIRAA, thence....

TAKEOFF RUNWAY 33L: Climb on heading 330° to intercept course 314° to TEKKK, then on track 250° to cross COUSY at or above 5000, thence....

....on depicted track to CELTK. Maintain 5000. Expect clearance to filed altitude within ten minutes after departure.

NE-1, 22 FEB 2024 to 21 MAR 2024

NE-1, 22 FEB 2024 to 21 MAR 2024

HYLND SEVEN DEPARTURE (RNAV)

AL-58 (FAA)

BOSTON, MASSACHUSETTS

BOSTON DEP CON
133.0
D-ATIS 135.0
CLNC DEL
121.65 257.8
CPDLC
GND CON
121.75 121.9
BOSTON TOWER
128.8 257.8 (WEST)
132.225 257.8 (EAST)

RNAV 1 - DME/DME/IRU or GPS.

TOP ALTITUDE:
5000

RADAR required for non-GPS equipped aircraft.

TAKEOFF MINIMUMS:

Rwy 4L, 14, 15L, 32, 33R: NA-ATC.

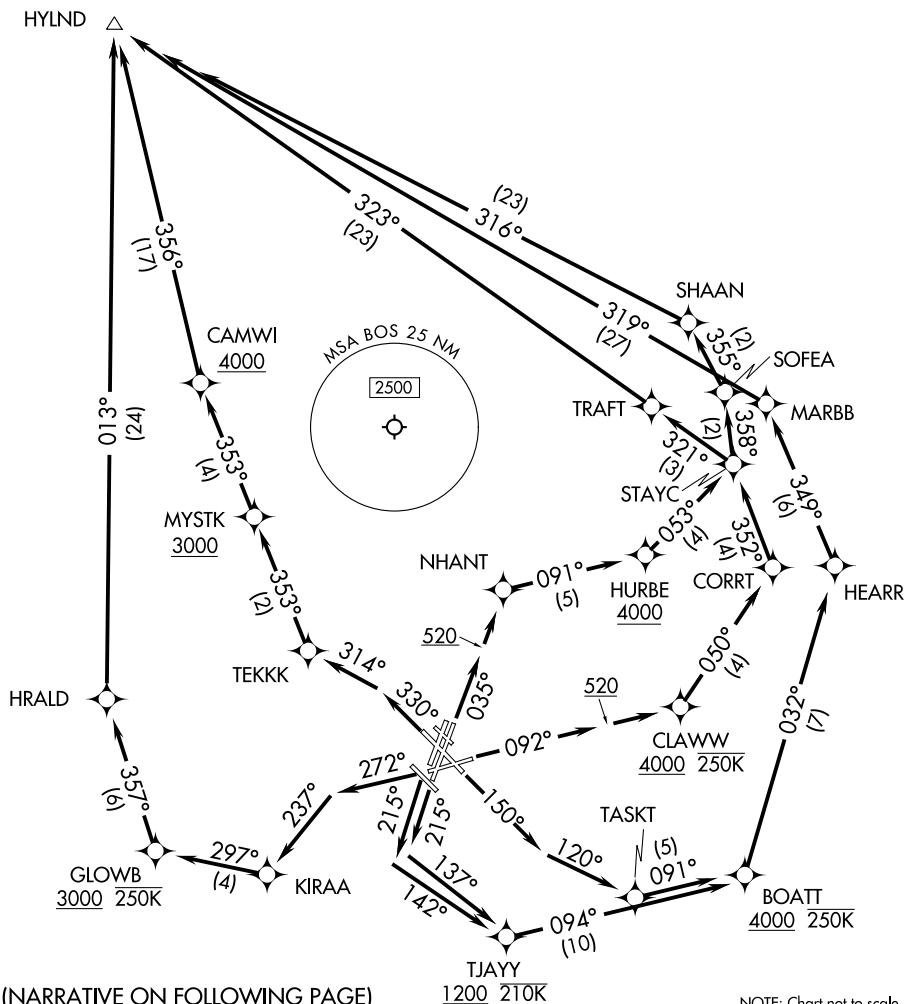
Rwy 4R, 9, 15R, 22R, 33L: Standard with minimum climb of 500'/NM to 520.

Rwy 22L: 300-1 with minimum climb of 500'/NM to 520, or standard with minimum climb of 500'/NM to 520 if tower reports no tall vessels in the departure area.

Rwy 27: Standard with minimum climb of 500'/NM to 1300.



NOTE: Jet aircraft only.



NE-1, 22 FEB 2024 to 21 MAR 2024

NE-1, 22 FEB 2024 to 21 MAR 2024



DEPARTURE ROUTE DESCRIPTION

TAKEOFF RUNWAY 4R: Climb on heading 035° to 520, then direct NHANT, then on track 091° to cross HURBE at or above 4000, thence....

TAKEOFF RUNWAY 9: Climb on heading 092° to 520, then direct CLAWW at or above 4000 and at or below 250K, thence....

TAKEOFF RUNWAY 15R: Climb on heading 150° to intercept course 120° to TASKT, do not exceed 210K until 520, thence....

TAKEOFF RUNWAY 22L: Climb on heading 215° to intercept course 137° to cross TJAYY at or above 1200 and at or below 210K, thence....

TAKEOFF RUNWAY 22R: Climb on heading 215° to intercept course 142° to cross TJAYY at or above 1200 and at or below 210K, thence....

TAKEOFF RUNWAY 27: Climb on heading 272° to intercept course 237° to KIRAA, thence....

TAKEOFF RUNWAY 33L: Climb on heading 330° to intercept course 314° to TEKKK, then on track 353° to cross MYSTK at or above 3000, thence....

...on depicted route to HYLND. Maintain 5000. Expect filed altitude 10 minutes after departure.

NE-1, 22 FEB 2024 to 21 MAR 2024

NE-1, 22 FEB 2024 to 21 MAR 2024

(LBSTA8.LBSTA) 23334

GENERAL EDWARD LAWRENCE LOGAN INTL (BOS)

LBSTA EIGHT DEPARTURE (RNAV)

AL-58 (FAA)

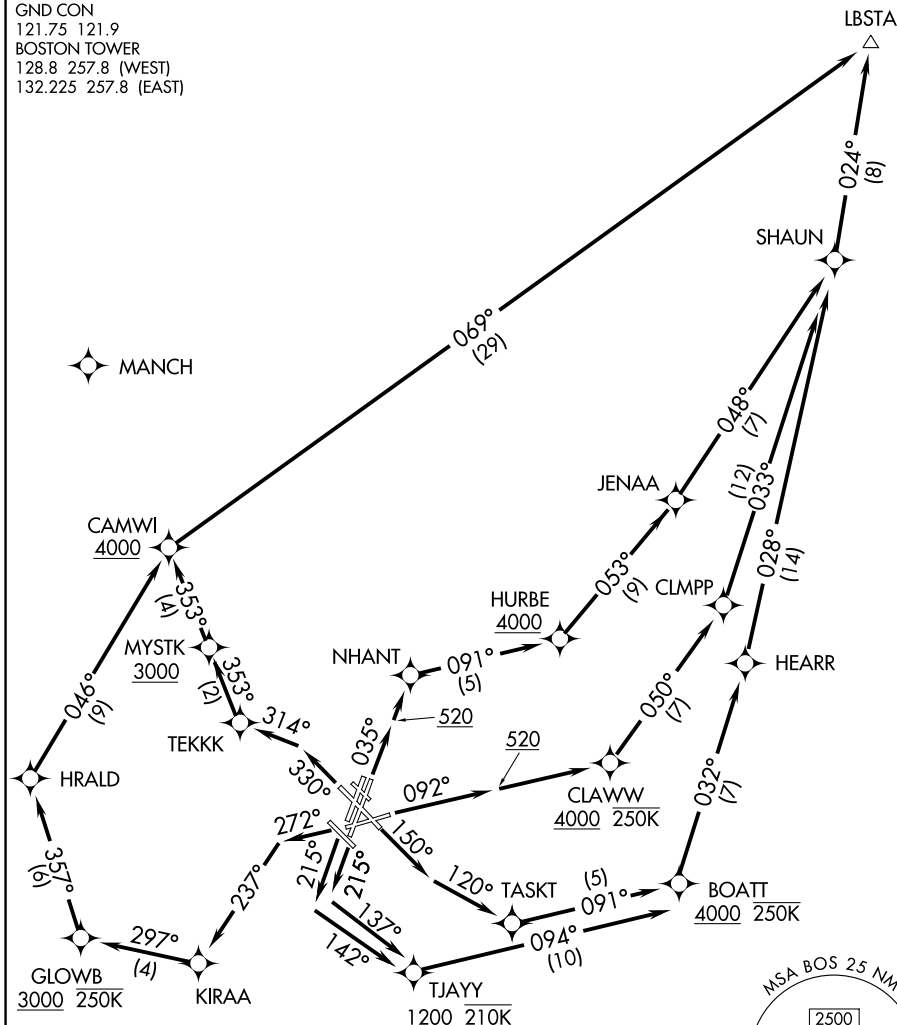
BOSTON, MASSACHUSETTS

BOSTON DEP CON
133.0
D-ATIS 135.0
CLNC DEL
121.65 257.8
CPDLC
GND CON
121.75 121.9
BOSTON TOWER
128.8 257.8 (WEST)
132.225 257.8 (EAST)

RNAV 1 - DME/DME/IRU or GPS.
RADAR required for non-GPS equipped aircraft.

**TOP ALTITUDE:
5000**

NOTE: Jet aircraft only.



NE-1, 22 FEB 2024 to 21 MAR 2024

NE-1, 22 FEB 2024 to 21 MAR 2024

TAKEOFF MINIMUMS

- Rwy 4L, 14, 15L, 32, 33R: NA - ATC.
- Rwy 4R, 9, 15R, 22R, 33L: Standard with minimum climb of 500' per NM to 520.
- Rwy 22L: 300-1 with minimum climb of 500' per NM to 520, or standard with minimum climb of 500'/NM to 520 if tower reports no tall vessels in the departure area.
- Rwy 27: Standard with minimum climb of 500' per NM to 1300.

NOTE: Chart not to scale.

(NARRATIVE ON FOLLOWING PAGE)

LBSTA EIGHT DEPARTURE (RNAV)

BOSTON, MASSACHUSETTS

(LBSTA8.LBSTA) 30NOV23

GENERAL EDWARD LAWRENCE LOGAN INTL (BOS)



DEPARTURE ROUTE DESCRIPTION

TAKEOFF RUNWAY 4R: Climb on heading 035° to 520, then direct NHANT, then on track 091° to cross HURBE at or above 4000, thence....

TAKEOFF RUNWAY 9: Climb on heading 092° to 520, then direct CLAWW at or above 4000 and at or below 250K, thence....

TAKEOFF RUNWAY 15R: Climb on heading 150° to intercept course 120° to TASKT, do not exceed 210K until 520' MSL, thence....

TAKEOFF RUNWAY 22L: Climb on heading 215° to intercept course 137° to cross TJAYY at or above 1200 and at or below 210K, thence....

TAKEOFF RUNWAY 22R: Climb on heading 215° to intercept course 142° to cross TJAYY at or above 1200 and at or below 210K, thence....

TAKEOFF RUNWAY 27: Climb on heading 272° to intercept course 237° to KIRAA, thence....

TAKEOFF RUNWAY 33L: Climb on heading 330° to intercept course 314° to TEKKE, then on track 353° to cross MYSTK at or above 3000, thence....

....on depicted route to LBSTA. Maintain 5000. Expect filed altitude 10 minutes after departure.

NE-1, 22 FEB 2024 to 21 MAR 2024

NE-1, 22 FEB 2024 to 21 MAR 2024

LOGAN FOUR DEPARTURE

AL-58 (FAA)

BOSTON, MASSACHUSETTS



DEPARTURE ROUTE DESCRIPTION

JET AIRCRAFT:

TAKEOFF RUNWAYS 4L/R: Climb on heading 035° to BOS 4 DME, then right turn heading 090°, thence....

TAKEOFF RUNWAY 9: Climb on heading 092°, thence....

TAKEOFF RUNWAY 14: Climb on heading 141° to BOS 1 DME, then left turn heading 120°, thence....

TAKEOFF RUNWAY 15R: Climb on heading 150° to BOS 1 DME, then left turn heading 120°, thence....

TAKEOFF RUNWAYS 22L/R: Climbing left turn heading 140°, thence....

TAKEOFF RUNWAY 27: Climb on heading 272° to BOS 2.2 DME, then left turn heading 235°, thence....

TAKEOFF RUNWAY 33L: Climb on heading 330° to BOS 2 DME, then left turn heading 316°, thence....

NON JET AIRCRAFT: Climb on assigned heading, thence....

....expect RADAR vectors to assigned route/navaid/fix. Jet aircraft maintain 5000 or lower assigned altitude. Non jet aircraft maintain 3000 or lower assigned altitude. Expect clearance to filed altitude/flight level within ten (10) minutes after departure.

TAKEOFF MINIMUMS:

Rwy 15L: NA-ATC.

Rwy 32, 33R: NA-environmental.

Rwy 4R, 15R: Standard.

Rwy 4L: 300-1 or standard with minimum climb of 369' per NM to 300.

Rwy 9: 300-1¼ or standard with minimum climb of 266' per NM to 300.

Rwy 14: Standard with minimum climb of 233' per NM to 1100.

Rwy 22L: 300-1 or standard if tower reports no tall vessels in the departure area.

Rwy 22R: 300-1¾ or standard with minimum climb of 320' per NM to 300.

Rwy 27: Standard with minimum climb of 487' per NM to 1000.

Rwy 33L: 300-1¾ or standard with minimum climb of 232' per NM to 400, or alternatively, with standard takeoff minimums and a normal 200' per NM climb gradient, takeoff must occur no later than 2100' prior to DER.

NOTE: Non RNAV equipped aircraft can expect vectors on assigned route.

NOTE: Jet aircraft departure headings/vectors are predicated on avoiding noise sensitive areas.

Flight crew awareness and compliance is important in minimizing noise impacts on surrounding communities. Aircraft that are initially vectored over water can expect to cross the coastline above 6000 MSL before proceeding on course.

NOTE: BLZZR DEPARTURES expect vectors on BOS R-273, DME required.

NOTE: BRUWN DEPARTURES expect vectors on BOS R-159, DME required.

NOTE: CELTK DEPARTURES expect vectors on BOS R-114.

NOTE: HYLND DEPARTURES expect vectors on BOS R-350, DME required.

NOTE: PATSS DEPARTURES expect vectors on BOS R-260, DME required.

NOTE: REVSS DEPARTURES expect vectors on BOS R-285, DME required.

NOTE: SSOXS DEPARTURES expect vectors on BOS R-177, DME required.

NE-1, 22 FEB 2024 to 21 MAR 2024

NE-1, 22 FEB 2024 to 21 MAR 2024

PATSS SEVEN DEPARTURE (RNAV)
(PATSS7.PATSS) 30NOV23

BOSTON, MASSACHUSETTS
GENERAL EDWARD LAWRENCE LOGAN INTL (BOS)

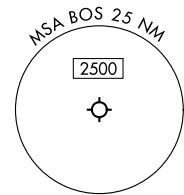
BOSTON DEP CON
133.0
D-ATIS
135.0
CLNC DEL
121.65 257.8
CPDLC
GND CON
121.75 121.9
BOSTON TOWER
128.8 257.8 (WEST)
132.225 257.8 (EAST)

TAKEOFF MINIMUMS:

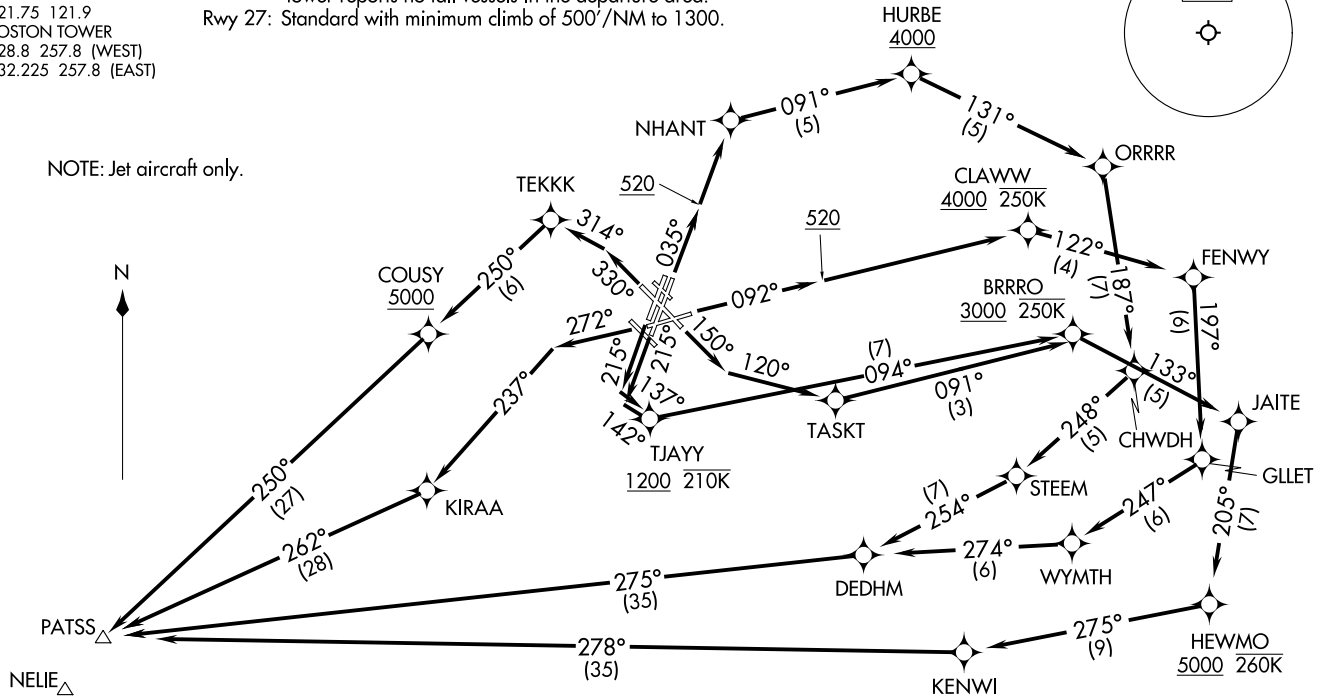
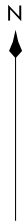
Rwy 4L, 14, 15L, 32, 33R: NA-ATC.
Rwy 4R, 9, 15R, 22R, 33L: Standard with minimum climb of 500'/NM to 520.
Rwy 22L: 300-1 with minimum climb of 500'/NM to 520, or standard with minimum climb of 500'/NM to 520, if tower reports no tall vessels in the departure area.
Rwy 27: Standard with minimum climb of 500'/NM to 1300.

RNAV 1 - DME/DME/IRU or GPS.
RADAR required for non-GPS equipped aircraft.

TOP ALTITUDE:
5000



NOTE: Jet aircraft only.



(NARRATIVE ON FOLLOWING PAGE)

NOTE: Chart not to scale.

(PATSS7.PATSS) 23334
PATSS SEVEN DEPARTURE (RNAV)

BOSTON, MASSACHUSETTS
GENERAL EDWARD LAWRENCE LOGAN INTL (BOS)
AL-58 (FAA)



DEPARTURE ROUTE DESCRIPTION

TAKEOFF RUNWAY 4R: Climb on heading 035° to 520, then direct NHANT, then on track 091° to cross HURBE at or above 4000, thence....

TAKEOFF RUNWAY 9: Climb on heading 092° to 520, then direct to cross CLAWW at or above 4000 and at or below 250K, thence....

TAKEOFF RUNWAY 15R: Climb on heading 150° to intercept course 120° to TASKT, do not exceed 210K until 520' MSL, thence....

TAKEOFF RUNWAY 22L: Climb on heading 215° to intercept course 137° to cross TJAYY at or above 1200 and at or below 210K, thence....

TAKEOFF RUNWAY 22R: Climb on heading 215° to intercept course 142° to cross TJAYY at or above 1200 and at or below 210K, thence....

TAKEOFF RUNWAY 27: Climb on heading 272° to intercept course 237° to KIRAA, thence....

TAKEOFF RUNWAY 33L: Climb on heading 330° to intercept course 314° to TEKKE, then on track 250° to cross COUSY at or above 5000, thence....

....on depicted route to PATSS. Maintain 5000. Expect clearance to filed altitude within ten minutes after departure.

NE-1, 22 FEB 2024 to 21 MAR 2024

NE-1, 22 FEB 2024 to 21 MAR 2024

REVSS SIX DEPARTURE (RNAV)
(REVSS6, REVSS) 30NOV23

GENERAL EDWARD LAWRENCE LOGAN INTL (BOS)
BOSTON, MASSACHUSETTS

BOSTON DEP CON
133.0
D-ATIS 135.0
CLNC DEL
121.65 257.8
CPDLC
GND CON
121.75 121.9
BOSTON TOWER
128.8 257.8 (WEST)
132.225 257.8 (EAST)

TAKEOFF MINIMUMS

Rwy 4L, 14, 15L, 32, 33R: NA - ATC.
Rwy 4R, 9, 15R, 22R, 33L: Standard with minimum climb of 500'/NM to 520.
Rwy 22L: 300-1 with minimum climb of 500'/NM to 520, or standard with minimum climb of 500'/NM to 520 if tower reports no tall vessels in the departure area.
Rwy 27: Standard with minimum climb of 500' per NM to 1300.

RNAV 1 - DME/DME/IRU or GPS.

RADAR required for non-GPS equipped aircraft.

TOP ALTITUDE:
5000

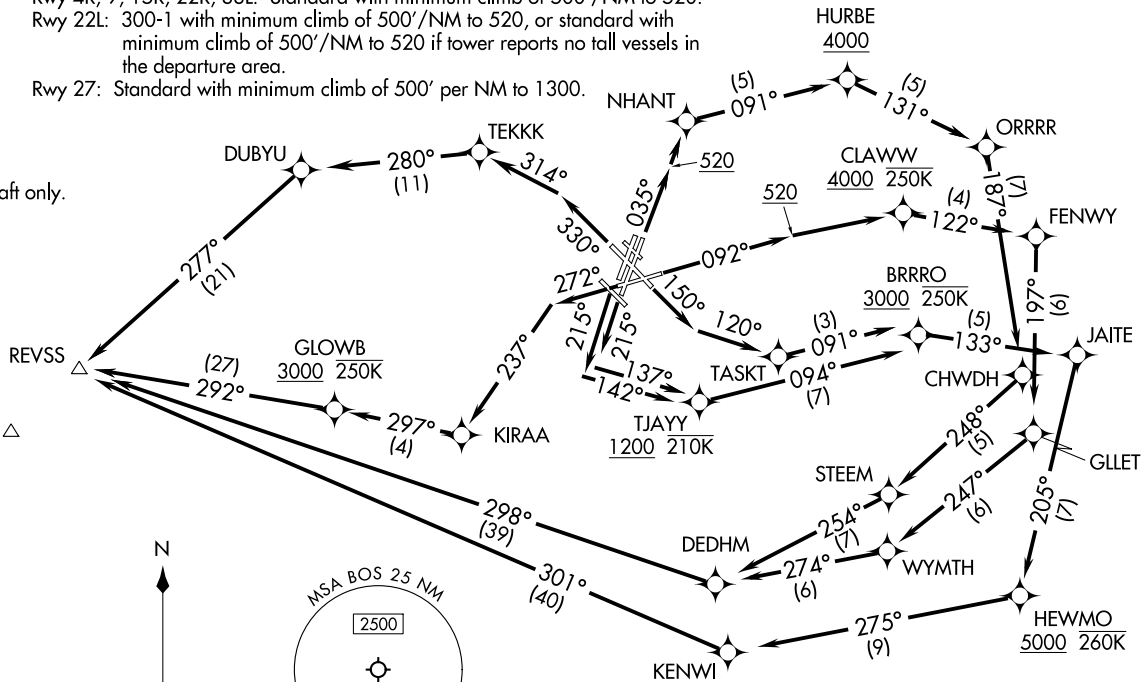
NOTE: Jet aircraft only.

CHESTER CTR

SPENO

BARNES BAF

NELIE



(NARRATIVE ON FOLLOWING PAGE)

(REVSS6, REVSS) 23334
REVSS SIX DEPARTURE (RNAV)

GENERAL EDWARD LAWRENCE LOGAN INTL (BOS)
AL-58 (FAA)
BOSTON, MASSACHUSETTS



DEPARTURE ROUTE DESCRIPTION

TAKEOFF RUNWAY 4R: Climb on heading 035° to 520, then direct NHANT, then on track 091° to cross HURBE at or above 4000, thence....

TAKEOFF RUNWAY 9: Climb on heading 092° to 520, then direct CLAWW at or above 4000 and at or below 250K, thence....

TAKEOFF RUNWAY 15R: Climb on heading 150° to intercept course 120° to TASKT, do not exceed 210K until 520' MSL, thence....

TAKEOFF RUNWAY 22L: Climb on heading 215° to intercept course 137° to cross TJAYY at or above 1200 and at or below 210K, thence....

TAKEOFF RUNWAY 22R: Climb on heading 215° to intercept course 142° to cross TJAYY at or above 1200 and at or below 210K, thence....

TAKEOFF RUNWAY 27: Climb on heading 272° to intercept course 237° to KIRAA, thence....

TAKEOFF RUNWAY 33L: Climb on heading 330° to intercept course 314° to TEKKE, thence....

...on depicted route to REVSS. Maintain 5000. Expect filed altitude 10 minutes after departure.

NE-1, 22 FEB 2024 to 21 MAR 2024

NE-1, 22 FEB 2024 to 21 MAR 2024

(SSOXS7.SSOXS) 23334

GENERAL EDWARD LAWRENCE LOGAN INTL (BOS)

SSOXS SEVEN DEPARTURE (RNAV)

AL-58 (FAA)

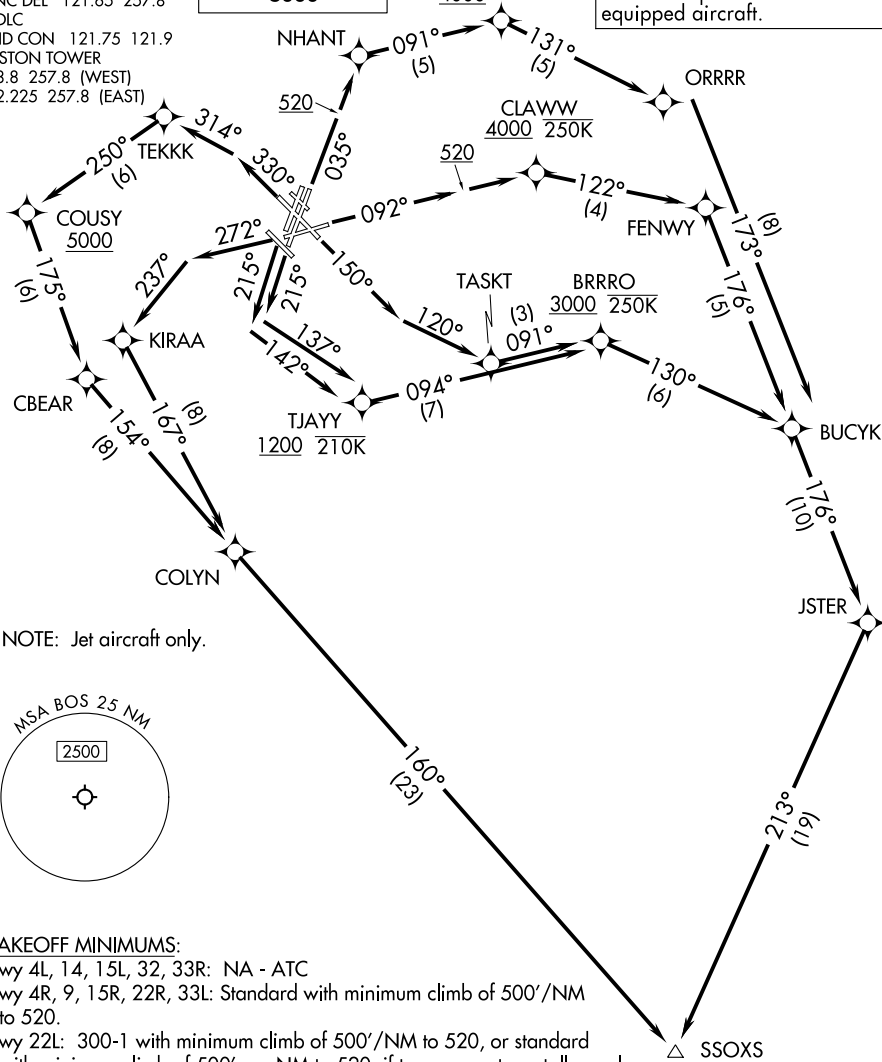
BOSTON, MASSACHUSETTS

BOSTON DEP CON 133.0
 D-ATIS 135.0
 CLNC DEL 121.65 257.8
 CPDLC
 GND CON 121.75 121.9
 BOSTON TOWER
 128.8 257.8 (WEST)
 132.225 257.8 (EAST)

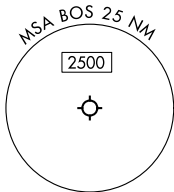
TOP ALTITUDE:
5000

HURBE
 4000

RNAV 1-DME/DME/IRU or GPS.
 RADAR required for non-GPS
 equipped aircraft.



NOTE: Jet aircraft only.



TAKEOFF MINIMUMS:

Rwy 4L, 14, 15L, 32, 33R: NA - ATC

Rwy 4R, 9, 15R, 22R, 33L: Standard with minimum climb of 500'/NM to 520.

Rwy 22L: 300-1 with minimum climb of 500'/NM to 520, or standard with minimum climb of 500' per NM to 520, if tower reports no tall vessels in the departure area.

Rwy 27: Standard with minimum climb of 500'/NM to 1300.

BUZZD

SANDY POINT

SEY

(NARRATIVE ON FOLLOWING PAGE)

NOTE: Chart not to scale.

SSOXS SEVEN DEPARTURE (RNAV)

BOSTON, MASSACHUSETTS

(SSOXS7.SSOXS)

30NOV23

GENERAL EDWARD LAWRENCE LOGAN INTL (BOS)

NE-1, 22 FEB 2024 to 21 MAR 2024

NE-1, 22 FEB 2024 to 21 MAR 2024



DEPARTURE ROUTE DESCRIPTION

TAKEOFF RUNWAY 4R: Climb on heading 035° to 520, then direct NHANT, then on track 091° to cross HURBE at or above 4000, thence....

TAKEOFF RUNWAY 9: Climb on heading 092° to 520, then direct CLAWW at or above 4000 and at or below 250K, thence....

TAKEOFF RUNWAY 15R: Climb on heading 150° to intercept course 120° to TASKT, do not exceed 210K until 520' MSL, thence....

TAKEOFF RUNWAY 22L: Climb on heading 215° to intercept course 137° to cross TJAYY at or above 1200 and at or below 210K, thence....

TAKEOFF RUNWAY 22R: Climb on heading 215° to intercept course 142° to cross TJAYY at or above 1200 and at or below 210K, thence....

TAKEOFF RUNWAY 27: Climb on heading 272° to intercept course 237° to KIRAA, thence....

TAKEOFF RUNWAY 33L: Climb on heading 330° to intercept course 314° to TEKKK, then on track 250° to cross COUSY at or above 5000, thence....

....on depicted route to SSOXS. Maintain 5000. Expect clearance to filed altitude within ten minutes after departure.

NE-1, 22 FEB 2024 to 21 MAR 2024

NE-1, 22 FEB 2024 to 21 MAR 2024

WYLYY FIVE DEPARTURE (RNAV) (WMLY5, WMLY) 08SEP22 BOSTON, MASSACHUSETTS GENERAL EDWARD LAWRENCE LOGAN INTL (BOS)

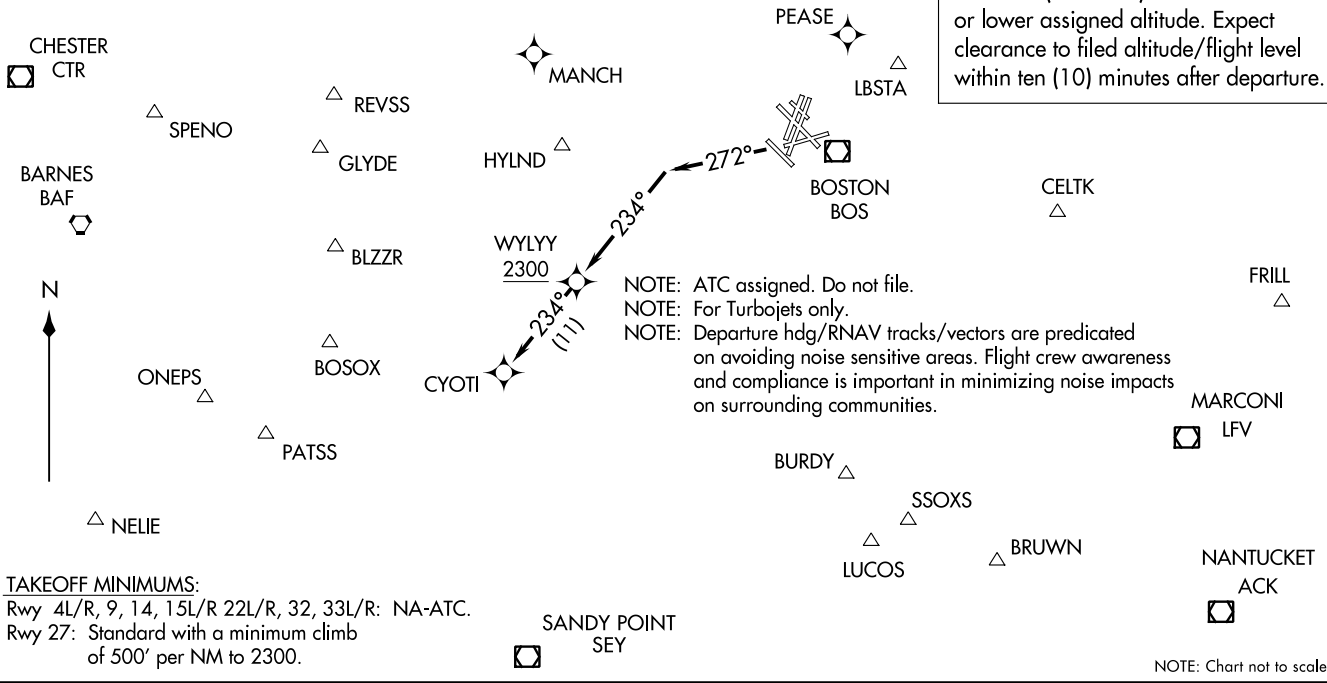
D-ATIS
135.0
CLINC DEL
121.65 257.8
CPDLC
GND CON
121.75 121.9
BOSTON TOWER
128.8 257.8 (WEST)
132.225 257.8 (EAST)
BOSTON DEP CON
133.0

RNAV 1 - DME/DME/IRU or GPS.
RADAR required.

TOP ALTITUDE:
5000

DEPARTURE ROUTE DESCRIPTION
TAKEOFF RUNWAY 27: Climb on heading 272° to intercept course 234° to cross WYLYY at or above 2300, then on depicted route to CYOTI, thence....
....expect vectors to assigned fix/NAVAID (see notes). Maintain 5000 or lower assigned altitude. Expect clearance to filed altitude/flight level within ten (10) minutes after departure.

NOTE: Departures assigned routing via LBSTA, PEASE, MANCH, HYLND, or REVSS direct SPENO; BLZZR direct ONEPS; PATSS, GLYDE, or BOSOX expect RADAR vectors to the right to assigned route/fix.
NOTE: Departures assigned routing via CELTK, FRILL, LFV VOR/DME, ACK VOR/DME, BRUWN, SSOXS, LUCOS, SEY VOR/DME, or BURDY expect RADAR vectors to the left to assigned route/fix.



TAKEOFF MINIMUMS:
Rwy 4L/R, 9, 14, 15L/R 22L/R, 32, 33L/R: NA-ATC.
Rwy 27: Standard with a minimum climb of 500' per NM to 2300.

NOTE: Chart not to scale.

WMLY5, WMLY) 22251 GENERAL EDWARD LAWRENCE LOGAN INTL (BOS) AL-58 (FAA) BOSTON, MASSACHUSETTS