

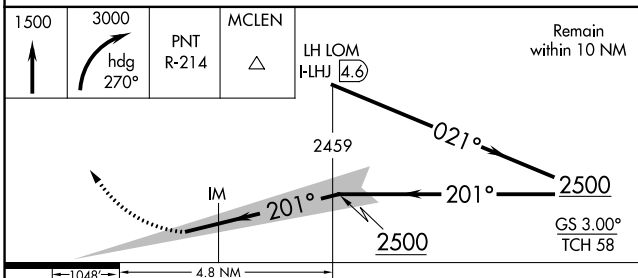
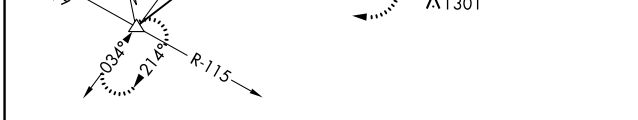
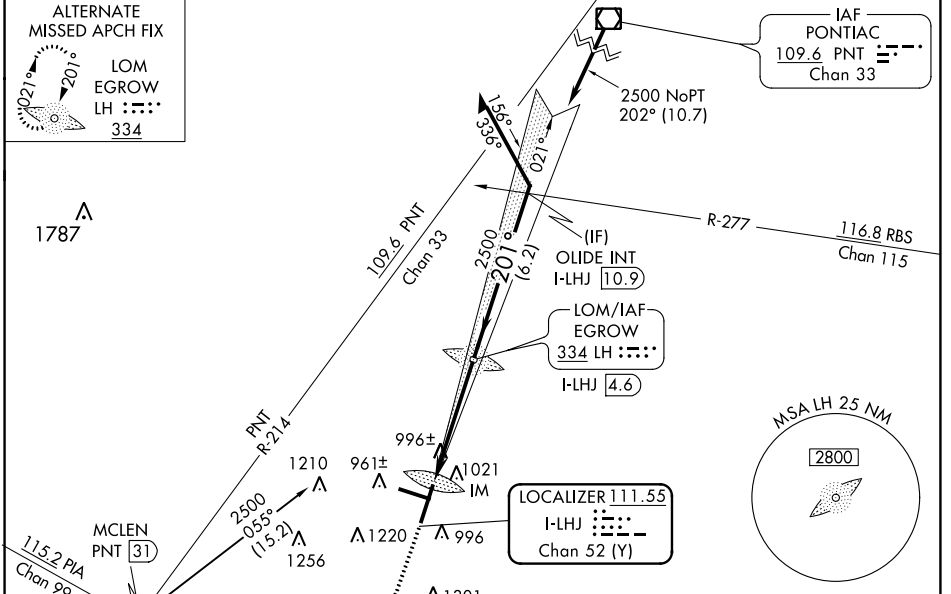
LOC/DME I-LHJ 111.55 Chan 52 (Y)	APP CRS 201°	Rwy Idg 8000 TDZE 871 Apt Elev 871
--	------------------------	---

ILS RWY 20 (CAT II)

CENTRAL IL RGNL/BLOOMINGTON-NORMAL (BMI)

<p>Procedure NA when tower closed.</p>	ALSF-2 	MISSED APPROACH: Climb to 1500 then climbing right turn to 3000 on heading 270° and on PNT VOR/DME R-214 to MCLEN INT/PNT 31 DME and hold.
--	------------	--

ATIS 135.35	SAINT LOUIS APP CON 128.725 256.9	BLOOMINGTON TOWER ★ 124.6 (CTAF) 269.575	GND CON 121.65	UNICOM 122.95
-----------------------	---	--	--------------------------	-------------------------



CATEGORY	A	B	C	D
S-ILS-20	RA 122/12 100 DA 971			

CATEGORY II ILS - SPECIAL AIRCREW & AIRCRAFT CERTIFICATION REQUIRED

ELEV 871	D	TDZE 871
----------	----------	----------

TDZ/CL Rwy 20
HIRL Rwy 2-20 and 11-29

EC-3, 22 FEB 2024 to 21 MAR 2024

EC-3, 22 FEB 2024 to 21 MAR 2024

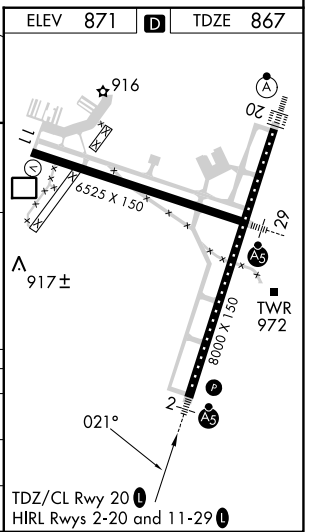
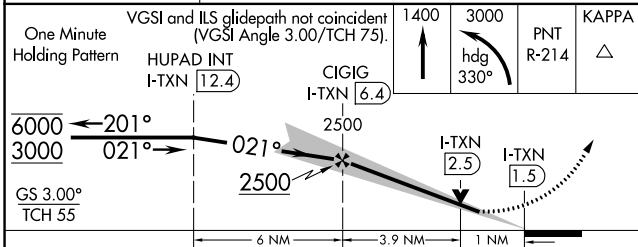
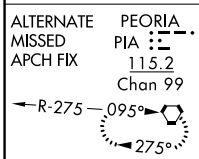
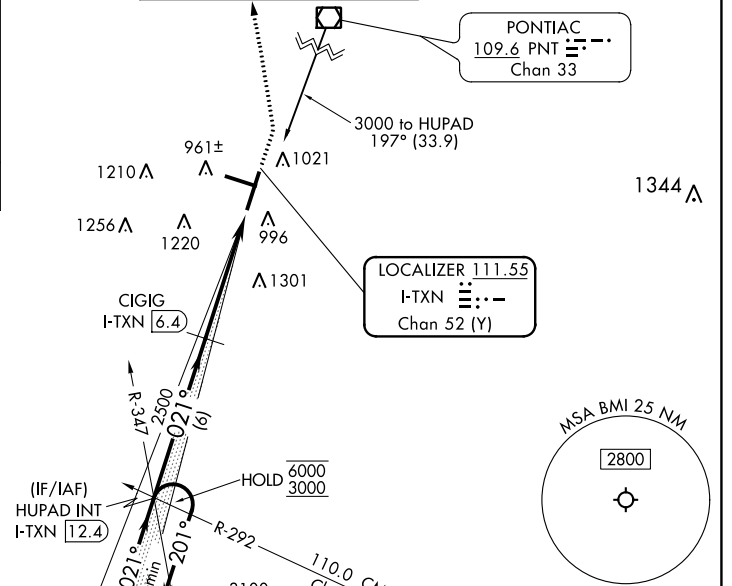
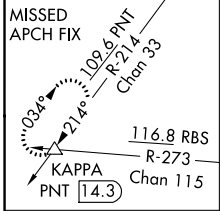
LOC/DME I-TXN 111.55 Chan 52 (Y)	APP CRS 021°	Rwy Idg 8000 TDZE 867 Apt Elev 871
--	------------------------	---

ILS or LOC RWY 2

CENTRAL IL RGNL/BLOOMINGTON-NORMAL (BMI)

DME required for LOC only.		MALS R	MISSED APPROACH: Climb to 1400 then climbing left turn to 3000 on heading 330° and on PNT VOR/DME R-214 to KAPPA INT/PNT 14.3 DME and hold.	
<p>Autopilot coupled approach NA below 1100. Inop table does not apply to S-ILS 2. For inop ALS, increase S-LOC 2 Cat A/B visibility to RVR 5500 and Cat C/D visibility to RVR 6000.</p>				

ATIS 135.35	SAINT LOUIS APP CON 128.725 256.9	BLOOMINGTON TOWER ★ 124.6 (CTAF) 0 269.575	GND CON 121.65	UNICOM 122.95
-----------------------	---	--	--------------------------	-------------------------



One Minute Holding Pattern	HUPAD INT I-TXN (12.4)	CIGIG I-TXN (6.4)	1400	3000	PNT R-214	KAPPA
6000 ← 201°	3000 → 021°	2500	2500	I-TXN (2.5)	I-TXN (1.5)	
GS 3.00°	TCH 55	6 NM	3.9 NM	1 NM		
CATEGORY	A	B	C	D		
S-ILS 2		1067/40	200 (200-¾)			
S-LOC 2		1260/40	393 (400-¾)			
CIRCLING	1340-1	469 (500-1)	1620-2¼ 749 (800-2¼)	1620-2½ 749 (800-2½)		

ILS or LOC RWY 2

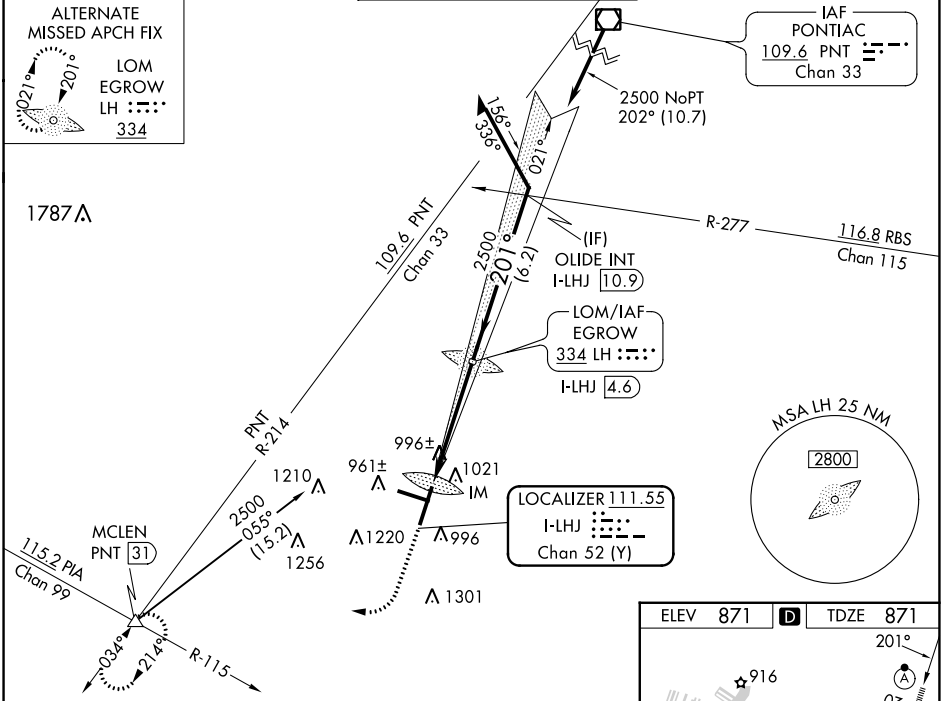
EC-3, 22 FEB 2024 to 21 MAR 2024

EC-3, 22 FEB 2024 to 21 MAR 2024

LOC/DME I-LHJ 111.55 Chan 52 (Y)	APP CRS 201°	Rwy Idg TDZE Apt Elev	8000 871 871
--	------------------------	-----------------------------	---

ILS or LOC RWY 20
CENTRAL IL RGNL/BLOOMINGTON-NORMAL (BMI)

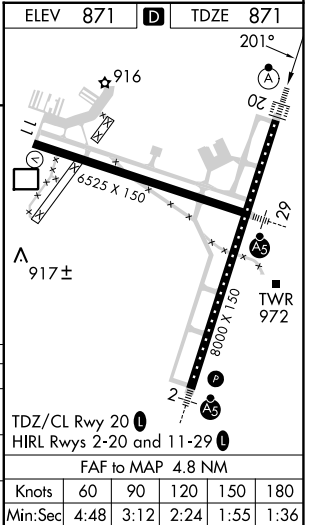
ATIS 135.35	SAINT LOUIS APP CON 128.725 256.9	BLOOMINGTON TOWER * 124.6 (CTAF) 269.575	GND CON 121.65	UNICOM 122.95
------------------------------	--	---	---------------------------------	--------------------------------



EC-3, 22 FEB 2024 to 21 MAR 2024

EC-3, 22 FEB 2024 to 21 MAR 2024

ELEV 871	TDZE 871		
1500 ↑	3000 hdg 270°	PNT R-214	MCLN △
LH LOM I-LHJ 4.6		Remain within 10 NM	
I-LHJ 0.9		2459	021°
IM		2500	201°
0.2 0.9 3.7 NM		2500	GS 3.00° TCH 58
CATEGORY	A	B	C
S-ILS 20	1071/18		200 (200-½)
S-LOC 20	1260/24	389 (400-½)	1260/35 389 (400-¾)
CIRCLING	1340-1	469 (500-1)	1620-2¼ 749 (800-2¼) 1620-2½ 749 (800-2½)




LOC/DME I-BMI	APP CRS	Rwy Idg	6525
110.95	291°	TDZE	871
Chan 46 (Y)		Apt Elev	871

ILS or LOC RWY 29

CENTRAL IL RGNL/BLOOMINGTON-NORMAL (BMI)

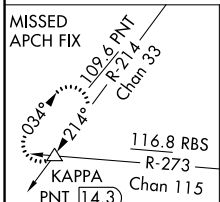
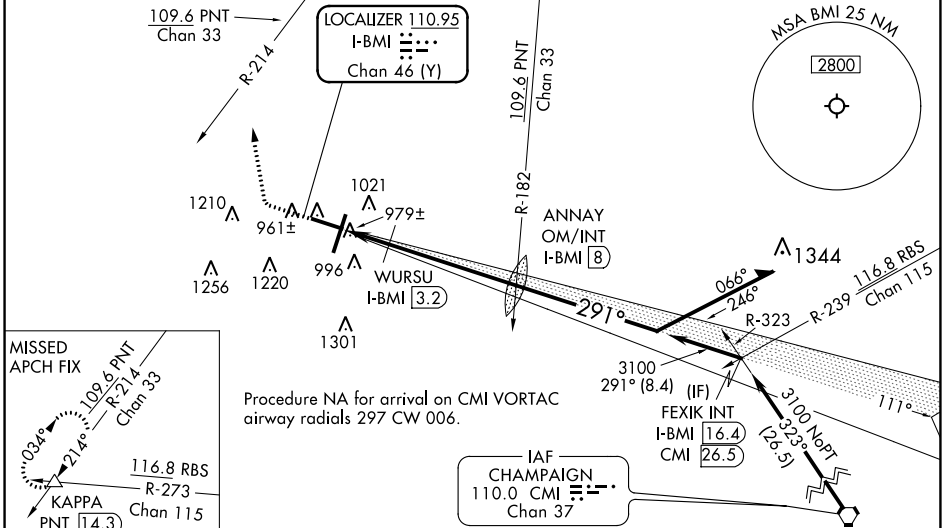
⚠ For inop ALS, increase S-LOC 29 Cats C and D visibility to 1 3/8 SM and WURSU fix minimums Cats C and D visibility to RVR 5500.
****RVR 1800 authorized with use of FD or AP or HUD to DA (NA when using General Downing-Peoria Intl altimeter setting).**

MALSR

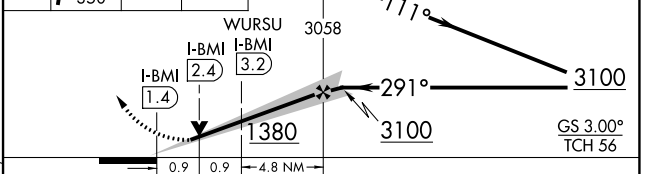
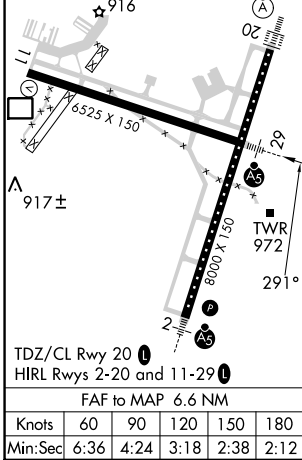


MISSED APPROACH: Climb to 1500 then climbing right turn to 3000 on heading 350° and PNT VOR/DME R-214 to KAPPA INT/PNT 14.3 DME and hold.

ATIS 135.35	SAINT LOUIS APP CON 128.725 256.9	BLOOMINGTON TOWER * 124.6 (CTAF) 0 269.575	GND CON 121.65	UNICOM 122.95
-----------------------	---	--	--------------------------	-------------------------



ELEV 871	D	TDZE 871	1500	3000	PNT R-214	KAPPA	ANNAY OM/INT I-BMI 8	Remain within 10 NM
----------	----------	----------	------	------	-----------	-------	----------------------	---------------------



CATEGORY	A	B	C	D
S-LS 29 **	1071/24 200 (200-1/2)			
S-LOC 29	1380/24	509 (600-1/2)	1380/55	509 (600-1)
C CIRCLING	1380-1	509 (600-1)	1620-2 1/4 749 (800-2 1/4)	1620-2 1/2 749 (800-2 1/2)
WURSU FIX MINIMUMS				
S-LOC 29	1240/24	369 (400-1/2)	1240/35	369 (400-5/8)
C CIRCLING	1340-1	469 (500-1)	1620-2 1/4 749 (800-2 1/4)	1620-2 1/2 749 (800-2 1/2)

EC-3, 22 FEB 2024 to 21 MAR 2024

EC-3, 22 FEB 2024 to 21 MAR 2024

LOC/DME I-BMI 110.95 Chan 46 (Y)	APP CRS 111°	Rwy Idg TDZE Apt Elev	6525 871 871
--	------------------------	-----------------------------	---

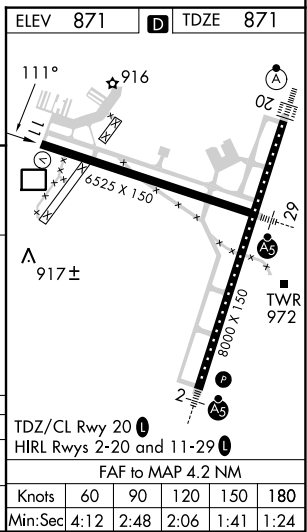
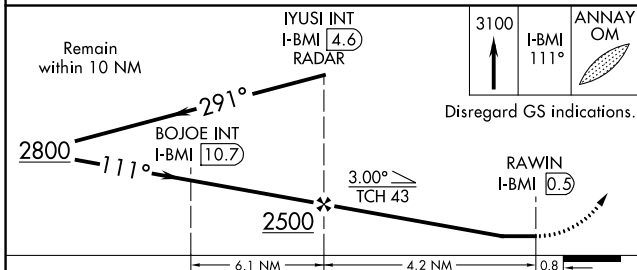
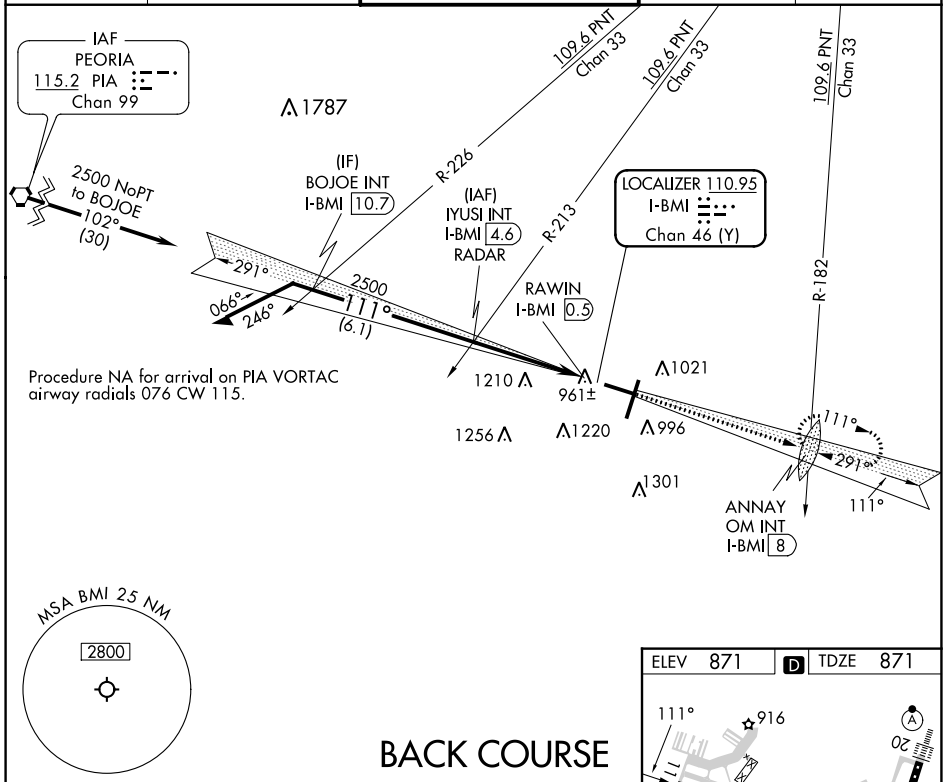
LOC BC RWY 11

CENTRAL IL RGNL/BLOOMINGTON-NORMAL (BMI)

RADAR required for procedure entry at IYUSI.

⚠ MISSED APPROACH: Climb to 3100 on I-BMI localizer SE course 111° to ANNAY OM INT/I-BMI 8 DME and hold, continue climb-in-hold to 3100.

ATIS 135.35	SAINT LOUIS APP CON 128.725 256.9	BLOOMINGTON TOWER * 124.6 (CTAF) 269.575	GND CON 121.65	UNICOM 122.95
-----------------------	---	--	--------------------------	-------------------------



CATEGORY	A	B	C	D
S-LOC BC 11	1280-1	409 (500-1)	1280-1½	409 (500-1½)
C CIRCLING	1340-1	469 (500-1)	1620-2¼ 749 (800-2¼)	1620-2½ 749 (800-2½)

EC-3, 22 FEB 2024 to 21 MAR 2024

EC-3, 22 FEB 2024 to 21 MAR 2024

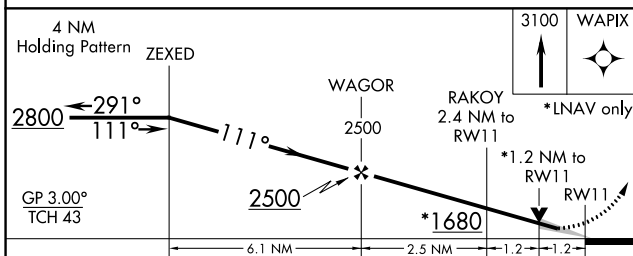
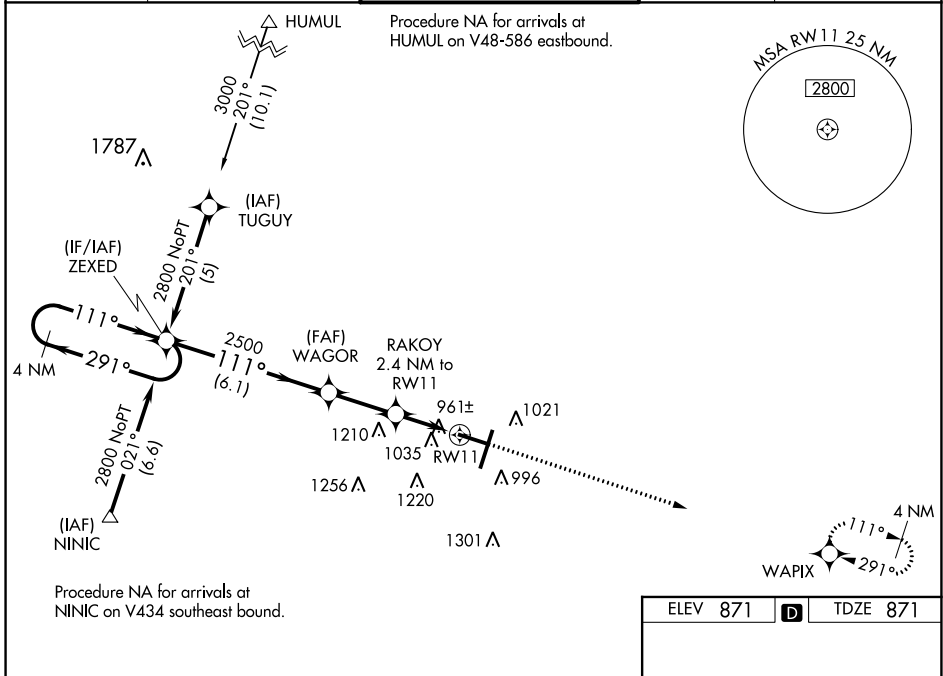
WAAS CH 97617 W11A	APP CRS 111°	Rwy Idg 6525 TDZE 871 Apt Elev 871
--	------------------------	---

RNAV (GPS) RWY 11

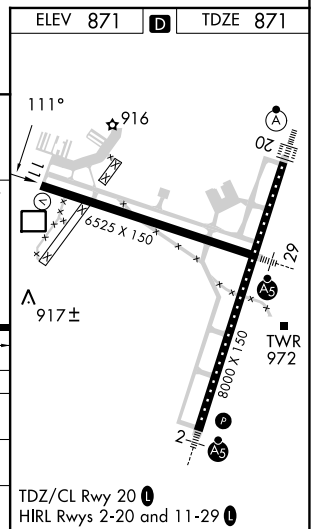
CENTRAL IL RGNL/BLOOMINGTON-NORMAL (BMI)

⚠	For uncompensated Baro-VNAV systems, LNAV/VNAV NA below -1.6°C (4°F) or above 54°C (130°F). DME/DME RNP-0.3 NA. Baro-VNAV and VDP NA when using General Downring-Peoria Intl altimeter setting. When local altimeter setting not received, use General Downring-Peoria Intl setting; increase all DA 116 feet and all MDA 120 feet; increase LPV all Cats visibility ½ mile, LNAV/VNAV all Cats and LNAV Cat C/D visibility ¾ mile, and Circling Cats C/D visibility ½ mile.	MISSED APPROACH: Climb to 3100 direct WAPIX and hold.
----------	--	---

ATIS 135.35	SAINT LOUIS APP CON 128.725 256.9	BLOOMINGTON TOWER * 124.6 (CTAF) 269.575	GND CON 121.65	UNICOM 122.95
-----------------------	---	---	--------------------------	-------------------------



CATEGORY	A	B	C	D
LPV DA		1121-3/4	250 (300-3/4)	
LNAV/VNAV DA		1341-1 5/8	470 (500-1 5/8)	
LNAV MDA	1280-1	409 (500-1)	1280-1 1/4	409 (500-1 1/4)
C CIRCLING	1340-1	469 (500-1)	1620-2 1/4	1620-2 1/2
			749 (800-2 1/4)	749 (800-2 1/2)



EC-3, 22 FEB 2024 to 21 MAR 2024

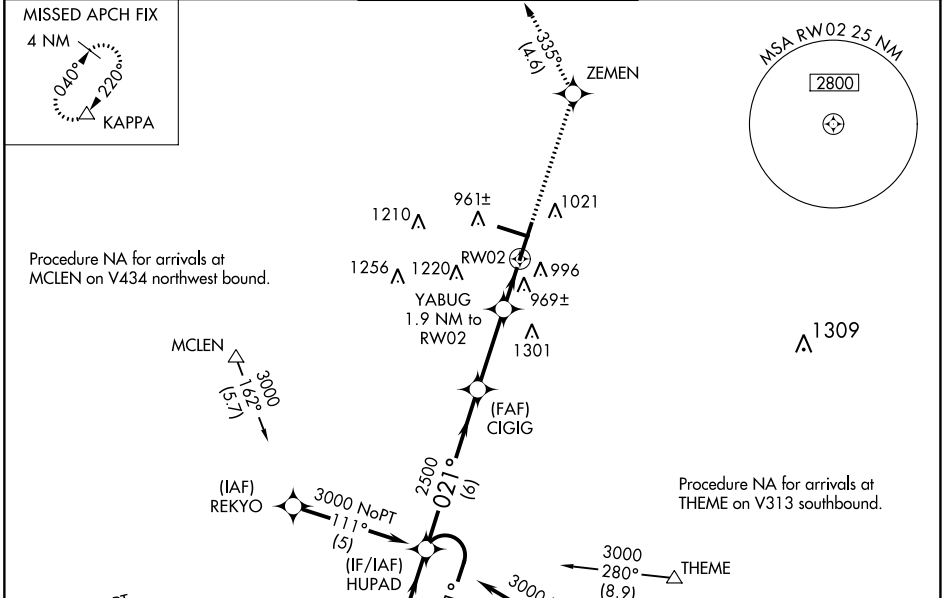
EC-3, 22 FEB 2024 to 21 MAR 2024

WAAS CH 56303 W02A	APP CRS 021°	Rwy Idg 8000 TDZE 867 Apt Elev 871
--	------------------------	---

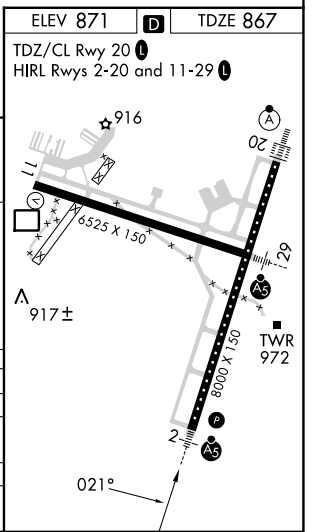
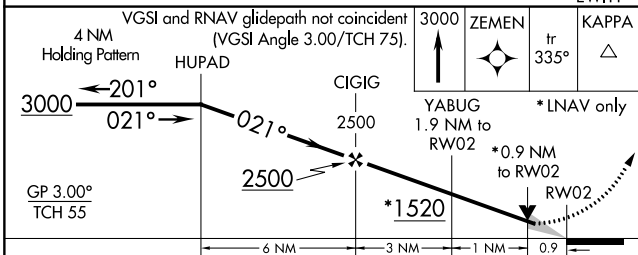
RNAV (GPS) RWY 2

CENTRAL IL RGNL/BLOOMINGTON-NORMAL (BMI)

RNP APCH. ▼ For uncompensated Baro-VNAV systems, LNAV/VNAV NA below -16°C or above 54°C. Baro-VNAV and VDP NA when using General Downing-Peoria Intl altimeter setting. When local altimeter setting not received, use General Downing-Peoria Intl altimeter setting: increase all DA 116 feet and all MDA 120 feet; increase LPV and LNAV/VNAV all Cats visibility ½ SM, LNAV Cats C/D visibility ¾ SM, and Circling all Cats visibility ¼ SM. Inop table does not apply.		MALSR 	MISSED APPROACH: Climb to 3000 direct ZEMEN then on track 335° to KAPPA and hold.
ATIS 135.35	SAINT LOUIS APP CON 128.725 256.9	BLOOMINGTON TOWER * 124.6 (CTAF) 0 269.575	GND CON 121.65
		UNICOM 122.95	



ELEV 871	TDZE 867
TDZ/CL Rwy 20	HIRL Rwy 2-20 and 11-29



CATEGORY	A	B	C	D
LPV DA		1214-1¼	347 (400-1¼)	
LNAV/VNAV DA		1269-1¼	402 (400-1¼)	
LNAV MDA	1220-1	353 (400-1)	1220-1¼	353 (400-1¼)
CIRCLING	1340-1	469 (500-1)	1620-2¼ 749 (800-2¼)	1620-2½ 749 (800-2½)

RNAV (GPS) RWY 2

EC-3, 22 FEB 2024 to 21 MAR 2024

EC-3, 22 FEB 2024 to 21 MAR 2024

WAAS CH 99303 W20A	APP CRS 201°	Rwy Idg TDZE Apt Elev	8000 871 871
--	------------------------	-----------------------------	---

RNAV (GPS) RWY 20

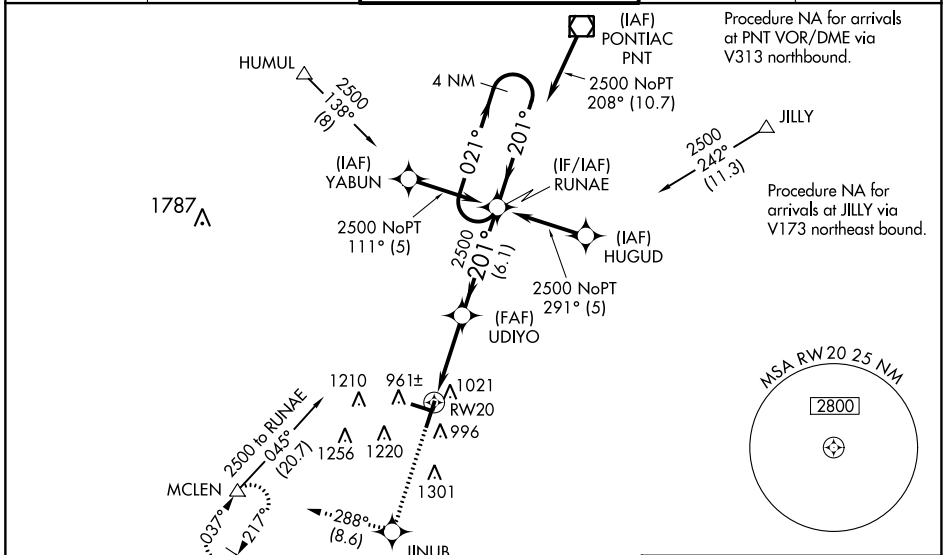
CENTRAL IL RGNL/BLOOMINGTON-NORMAL (BMI)

⚠ For uncompensated Baro-VNAV systems, LNAV/VNAV NA below -16°C (4°F) or above 54°C (130°F). DME/DME RNP-0.3 NA. Baro-VNAV and VDP NA when using General Downing-Peoria Intl altimeter setting. When local altimeter setting not received, use General Downing-Peoria Intl altimeter setting: increase all DA 116 feet and all MDA 120 feet; increase LPV all Cats visibility to ¾ mile, LNAV/VNAV all Cats visibility to 1 ¾ mile, LNAV Cats C/D visibility to 1 mile, and Circling Cats C/D visibility ¾ mile. For inop ALSF increase LNAV Cat C/D visibility to RVR 6000. For inoperative ALSF-2 when using General Downing-Peoria Intl altimeter setting increase LPV all Cats visibility to RVR 6000.

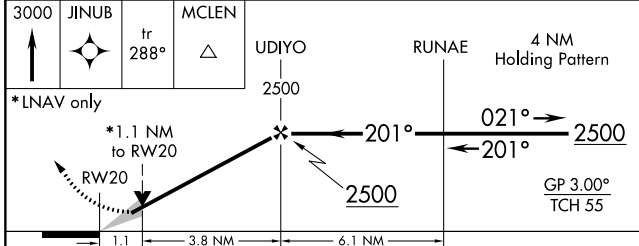
ALSF-2
(A)

MISSED APPROACH:
Climb to 3000 direct JINUB and on track 288° to MCLEN and hold.

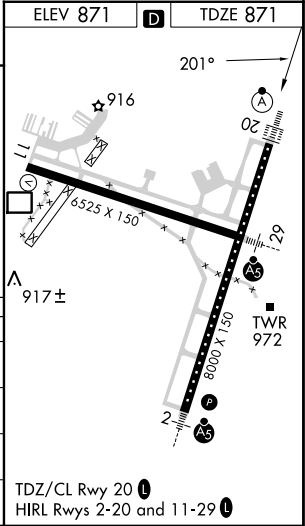
ATIS 135.35	SAINT LOUIS APP CON 128.725 256.9	BLOOMINGTON TOWER * 124.6(CTAF) 269.575	GND CON 121.65	UNICOM 122.95
-----------------------	---	--	--------------------------	-------------------------



3000	JINUB	MCLEN	UDIYO	RUNAE	4 NM Holding Pattern
		fr 288°			



CATEGORY	A	B	C	D
LPV DA		1121/24	250 (300-½)	
LNAV/VNAV DA		1301/50	430 (500-1)	
LNAV MDA	1280/24	409 (500-½)	1280/40	409 (500-¾)
C CIRCLING	1340-1	469 (500-1)	1620-2¼ 749 (800-2¼)	1620-2½ 749 (800-2½)



RNAV (GPS) RWY 20

EC-3, 22 FEB 2024 to 21 MAR 2024

EC-3, 22 FEB 2024 to 21 MAR 2024

WAAS CH 60909 W29A	APP CRS 291°	Rwy Idg TDZE Apt Elev	6525 871 871
--	------------------------	-----------------------------	---

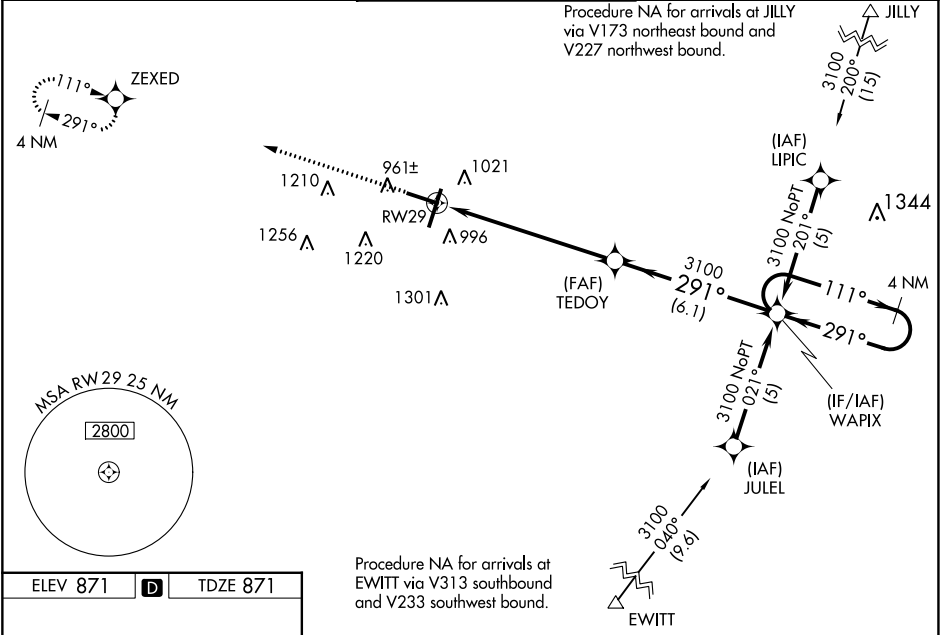
RNAV (GPS) RWY 29

CENTRAL IL RGNL/BLOOMINGTON-NORMAL (BMI)

⚠ For uncompensated Baro-VNAV systems, LNAV/VNAV NA below -16°C (4°F) or above 54°C (130°F). DME/DME RNP-0.3 NA. Baro-VNAV and VDP NA when using General Downing-Peoria Intl altimeter setting. When local altimeter setting not received, use General Downing-Peoria Intl altimeter setting: increase all DA 116 feet and all MDA 120 feet; increase LPV all Cats visibility to RVR 3500, LNAV/VNAV all Cats and LNAV Cats C/D visibility 3/8 mile, and Circling Cats C/D visibility 1/4 mile. For inoperative MALSRs when using General Downing-Peoria Intl Regional altimeter setting increase LPV all Cats visibility 1/2 mile, and LNAV Cat C/D visibility 3/8 mile.

MALSR 	MISSED APPROACH: Climb to 2500 direct ZEXED and hold.
-----------	--

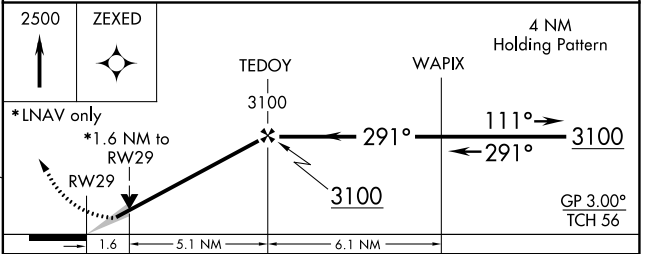
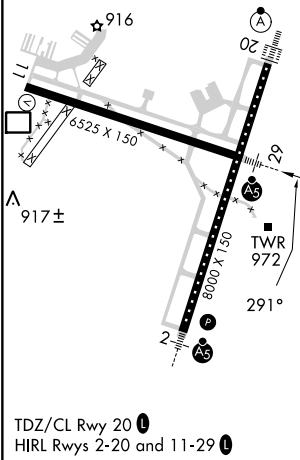
ATIS 135.35	SAINT LOUIS APP CON 128.725 256.9	BLOOMINGTON TOWER * 124.6 (CTAF) 269.575	GND CON 121.65	UNICOM 122.95
-----------------------	---	--	--------------------------	-------------------------



EC-3, 22 FEB 2024 to 21 MAR 2024

EC-3, 22 FEB 2024 to 21 MAR 2024

ELEV 871	D	TDZE 871
----------	----------	----------



CATEGORY	A	B	C	D
LPV DA		1121/24	250 (300-1/2)	
LNAV/VNAV DA		1304/50	433 (500-1)	
LNAV MDA	1460/24	589 (600-1/2)	1460-1 1/4	589 (600-1 1/4)
C CIRCLING	1460-1	589 (600-1)	1620-2 1/4 749 (800-2 1/4)	1620-2 1/2 749 (800-2 1/2)