

LOC I- AAJ 110.3	APP CRS 158°	Rwy Idg 6905 TDZE 1634 Apt Elev 1636
-----------------------------------	------------------------	--

ILS or LOC RWY 16

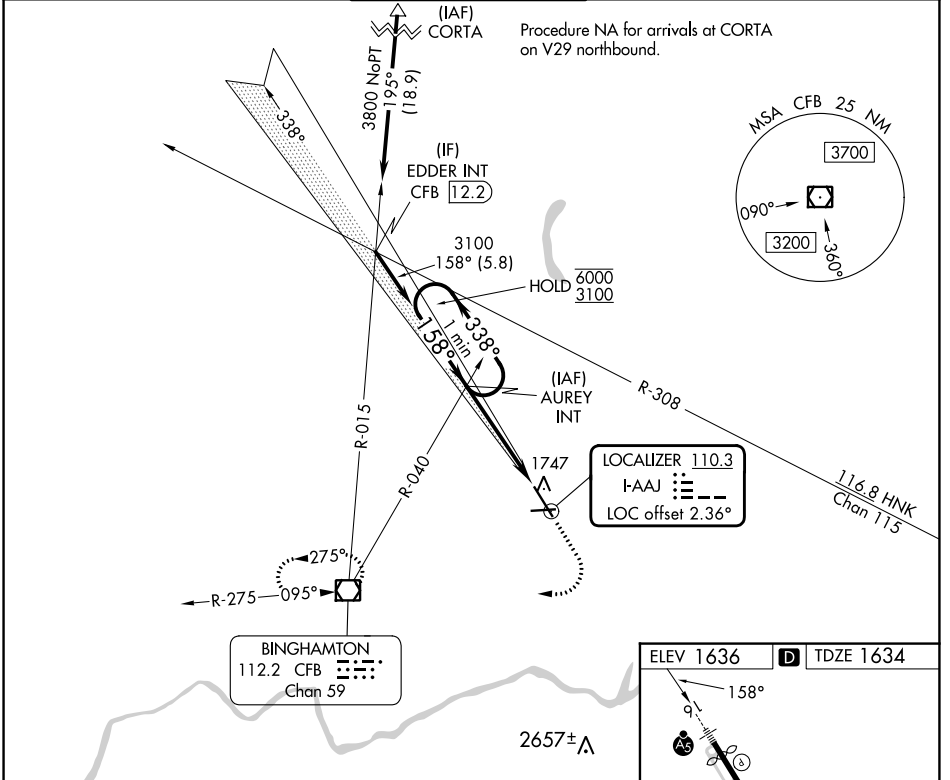
GREATER BINGHAMTON/EDWIN A LINK FLD (BGM)

▽
▲ For inop ALS, increase S-LOC 16 Cats C and D visibility to RVR 5500.



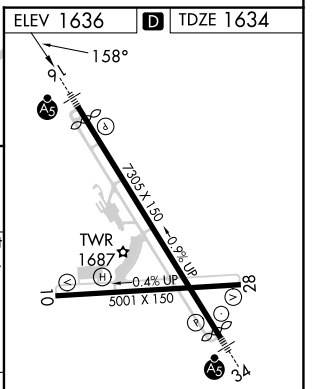
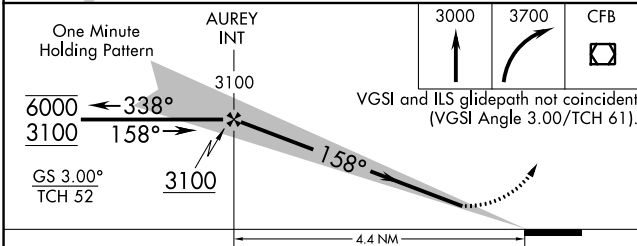
MISSED APPROACH: Climb to 3000 then climbing right turn to 3700 direct CFB VOR/DME and hold.

ATIS 128.15	BINGHAMTON APP CON * 118.6 257.625	BINGHAMTON TOWER * 119.3 (CTAF) 239.25	GND CON 121.9	CLNC DEL 125.05	UNICOM 122.95
-----------------------	--	--	-------------------------	---------------------------	-------------------------



NE-2, 22 FEB 2024 to 21 MAR 2024

NE-2, 22 FEB 2024 to 21 MAR 2024



CATEGORY	A	B	C	D
S-ILS 16		1884/24	250 (300-½)	
S-LOC 16	1980/24	346 (400-½)	1980/30	346 (400-½)
C CIRCLING	2120-1	484 (500-1)	2120-1½ 484 (500-½)	2200-2 564 (600-2)

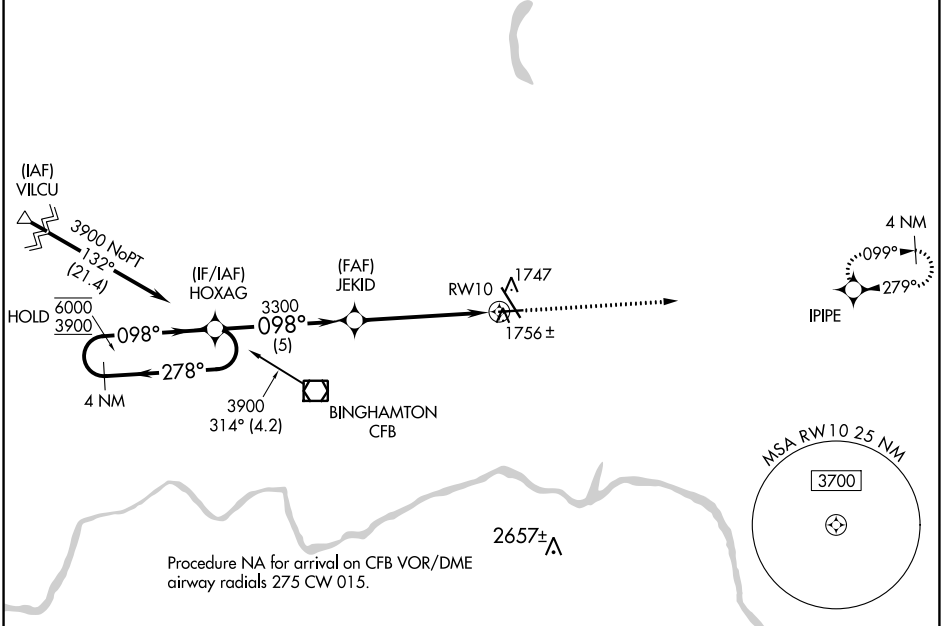
REIL Rwy 28	MIRL Rwy 10-28	HIRL Rwy 16-34			
FAF to MAP 4.4 NM					
Knots	60	90	120	150	180
Min:Sec	4:24	2:56	2:12	1:46	1:28

WAAS CH 93820 W10A	APP CRS 098°	Rwy Idg TDZE Apt Elev	5001 1591 1636
--	------------------------	-----------------------------	---

RNAV (GPS) RWY 10

GREATER BINGHAMTON/EDWIN A LINK FLD (BGM)

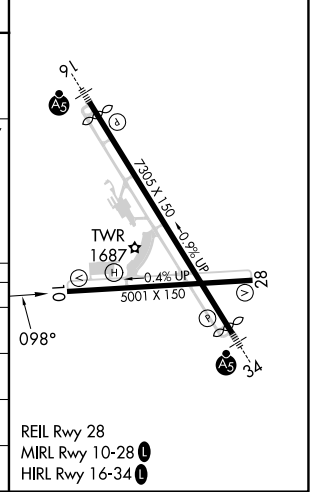
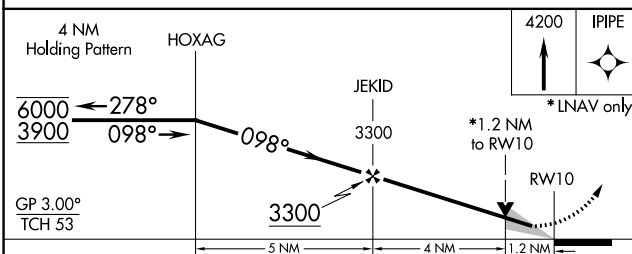
RNP APCH. ▼ For uncompensated Baro-VNAV systems, ▲ LNAV/VNAV NA below -21°C or above 54°C.		MISSED APPROACH: Climb to 4200 direct IPIPE and hold.			
ATIS 128.15	BINGHAMTON APP CON * 118.6 257.625	BINGHAMTON TOWER * 119.3 (CTAF) 0 239.25	GND CON 121.9	CLNC DEL 125.05	UNICOM 122.95



NE-2, 22 FEB 2024 to 21 MAR 2024

NE-2, 22 FEB 2024 to 21 MAR 2024

ELEV 1636	D	TDZE 1591
-----------	---	-----------



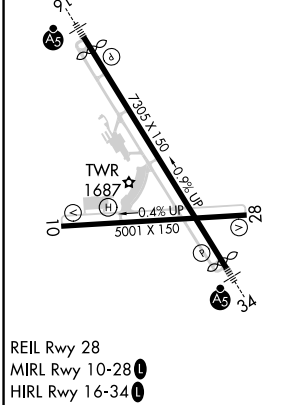
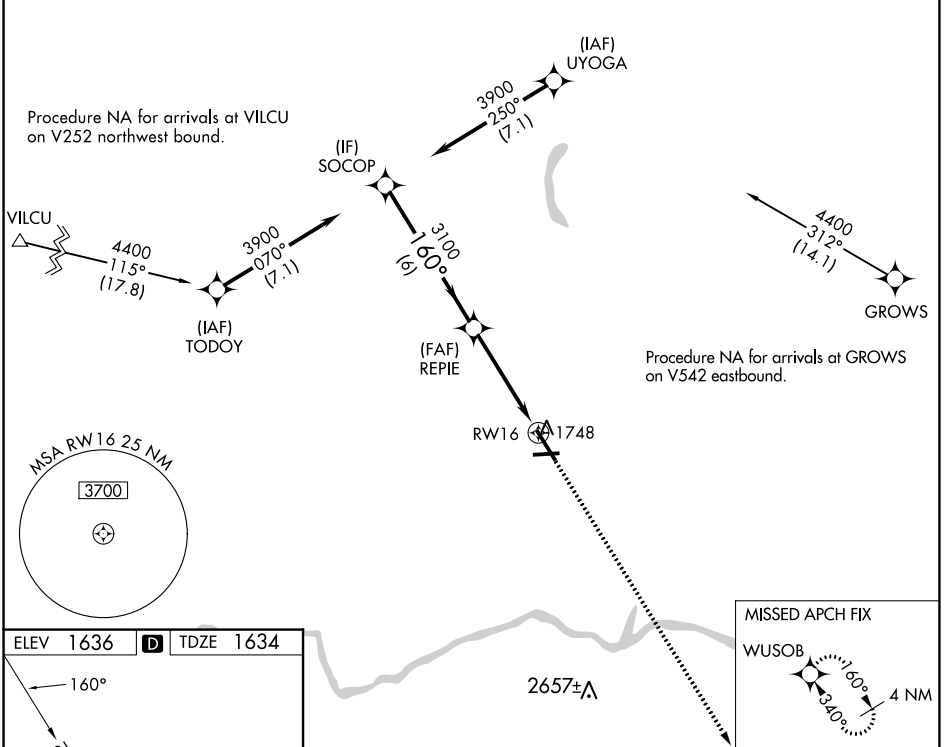
CATEGORY	A	B	C	D
LPV DA		1841-3/4	250 (300-3/4)	
LNAV/VNAV DA		1937-1	346 (400-1)	
LNAV MDA	2020-1	429 (400-1)	2020-1 1/4	429 (400-1 1/4)
CIRCLING	2120-1	484 (500-1)	2120-1 1/2	2200-2 564 (600-2)

WAAS CH 66015 W16A	APP CRS 160°	Rwy ldg 6905 TDZE 1634 Apt Elev 1636
--	------------------------	---

RNAV (GPS) RWY 16

GREATER BINGHAMTON/EDWIN A LINK FLD (BGM)

RNP APCH.				MALSR		MISSED APPROACH: Climb to 4000 direct WUSOB and hold.	
For uncompensated Baro-VNAV systems, LNAV/VNAV NA below -21°C or above 54°C. For inop ALS, increase LNAV/VNAV all Cats visibility to RVR 5500.							
ATIS 128.15	BINGHAMTON APP CON * 118.6 257.625	BINGHAMTON TOWER * 119.3 (CTAF) 239.25	GND CON 121.9	CLNC DEL 125.05	UNICOM 122.95		



SOCOP		REPIE		RW16		WUSOB	
3900		3100		4000		4000	
GP 3.00°		TCH 52		*1.1 NM to RW16		*LNAV only	
6 NM		3.3 NM		1.1 NM			
CATEGORY	A	B	C	D			
LPV DA	1884/24			250 (300-1/2)			
LNAV/VNAV DA	1984/30			350 (400-3/8)			
LNAV MDA	2060/24 426 (500-1/2)		2060/40 426 (500-3/4)				
C CIRCLING	2120-1 484 (500-1)		2120-1 1/2 484 (500-1 1/2)		2200-2 564 (600-2)		

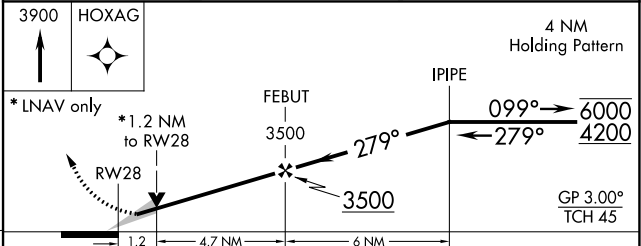
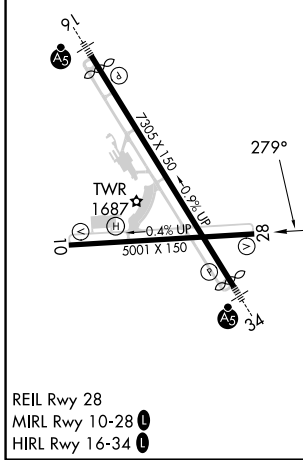
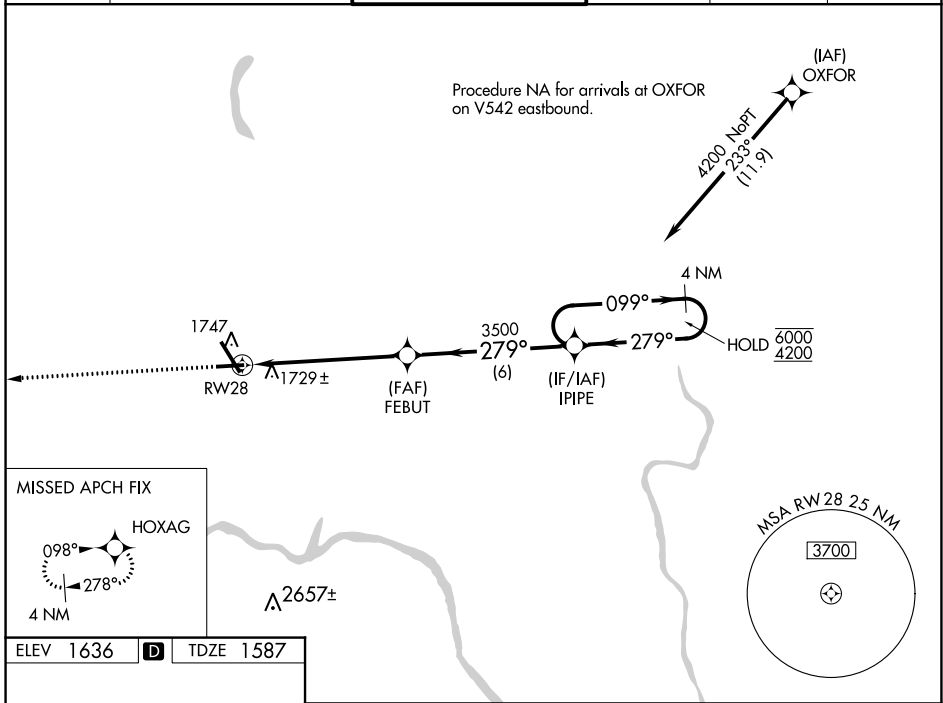
NE-2, 22 FEB 2024 to 21 MAR 2024

NE-2, 22 FEB 2024 to 21 MAR 2024

WAAS CH 82120 W28A	APP CRS 279°	Rwy Idg TDZE Apt Elev	5001 1587 1636
--	------------------------	-----------------------------	---

RNAV (GPS) RWY 28
GREATER BINGHAMTON/EDWIN A LINK FLD (BGM)

RNP APCH.		MISSED APPROACH: Climb to 3900 direct HOXAG and hold.			
For uncompensated Baro-VNAV systems, LNAV/VNAV NA below -21°C or above 54°C.					
ATIS 128.15	BINGHAMTON APP CON * 118.6 257.625	BINGHAMTON TOWER * 119.3 (CTAF) 239.25	GND CON 121.9	CLNC DEL 125.05	UNICOM 122.95



CATEGORY	A	B	C	D
LPV DA	1837-3/4 250 (300-3/4)			
LNAV/VNAV DA	2091-1 3/8 504 (500-1 3/8)			
LNAV MDA	2000-1	413 (400-1)	2000-1 1/8	413 (400-1 1/8)
C CIRCLING	2120-1	484 (500-1)	2120-1 1/2	2200-2
			484 (500-1 1/2)	564 (600-2)

NE-2, 22 FEB 2024 to 21 MAR 2024

NE-2, 22 FEB 2024 to 21 MAR 2024

WAAS CH 93915 W34A	APP CRS 340°	Rwy Idg TDZE 1600 Apt Elev 1636
--	------------------------	---

RNAV (GPS) RWY 34

GREATER BINGHAMTON/EDWIN A LINK FLD (BGM)

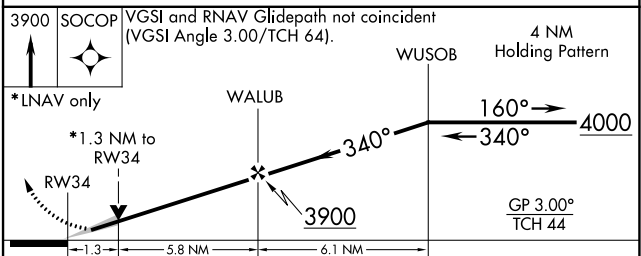
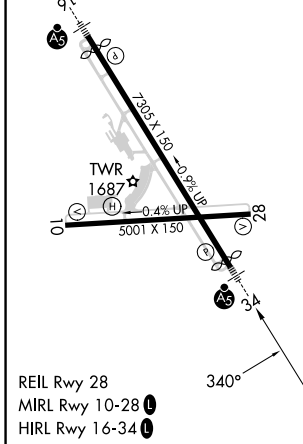
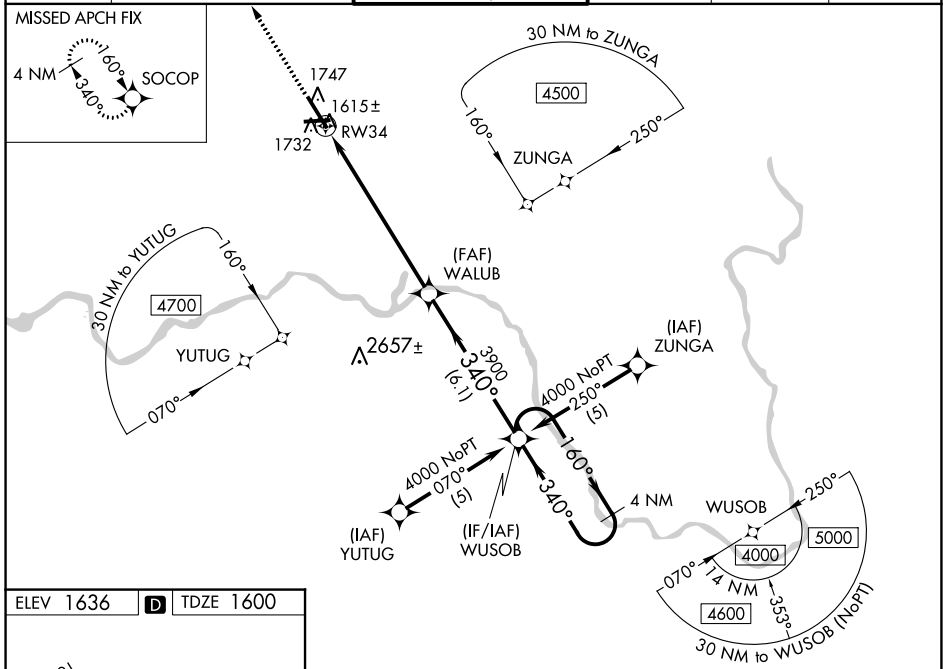
RNP APCH.

▼ For uncompensated Baro-VNAV systems, LNAV/VNAV NA below -18°C (0°F) or above 46°C (114°F). When local altimeter setting not received, use Ithaca altimeter setting and increase all DA 138 feet and all MDA 140 feet, increase LPV all Cats, LNAV Cats C and D and Circling Cat C and D visibility ½ SM, and LNAV/VNAV all Cats visibility ½ SM. For inoperative MALSR when using Ithaca altimeter setting increase LPV all Cats visibility to RVR 6000. Baro-VNAV and VDP NA when using Ithaca altimeter setting.



MISSED APPROACH:
Climb to 3900 direct SOCOP and hold.

ATIS 128.15	BINGHAMTON APP CON * 118.6 257.625	BINGHAMTON TOWER * 119.3 (CTAF) 0 239.25	GND CON 121.9	CLNC DEL 125.05	UNICOM 122.95
-----------------------	--	--	-------------------------	---------------------------	-------------------------



CATEGORY	A	B	C	D
LPV DA		1800/24	200 (200-½)	
LNAV/VNAV DA		2082/60	482 (500-1¼)	
LNAV MDA	2040/24	440 (500-½)	2040/40 440 (500-¾)	2040/50 440 (500-1)
C CIRCLING	2120-1	484 (500-1)	2120-1½ 484 (500-1½)	2200-2 564 (600-2)

NE-2, 22 FEB 2024 to 21 MAR 2024

NE-2, 22 FEB 2024 to 21 MAR 2024