

(MARIC4.MARIC) 21112

# MARIC FOUR DEPARTURE

AL-36 (FAA)

MEADOWS FLD (BFL)  
BAKERSFIELD, CALIFORNIA

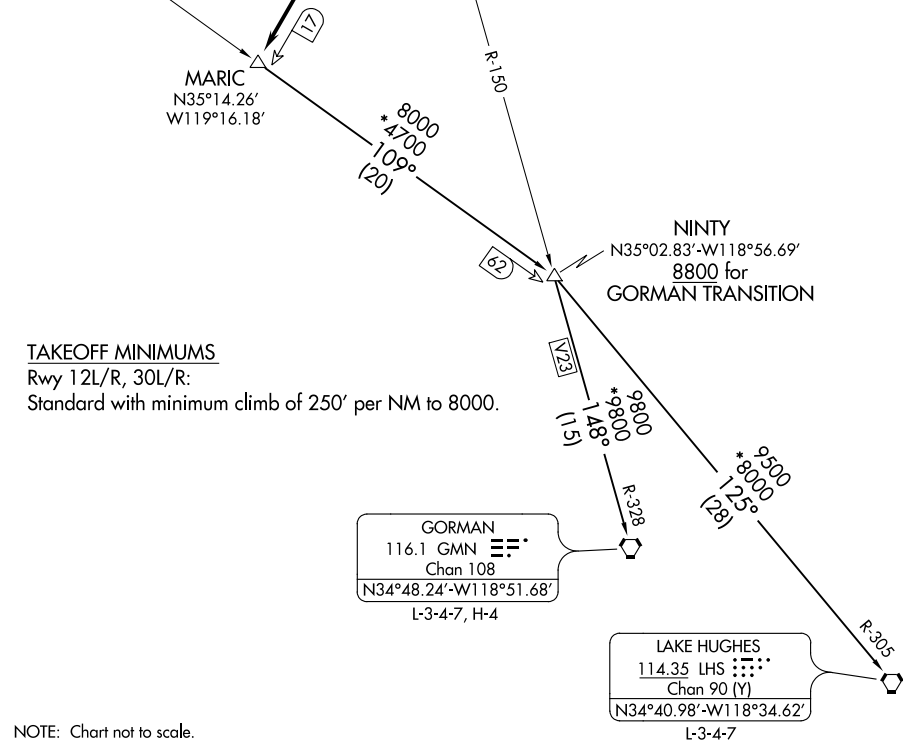
**TOP ALTITUDE:  
ASSIGNED BY ATC**

AVENAL  
117.1 AVE :--  
Chan 118

R-196  
SHAFTER  
115.4 EHF :--  
Chan 101

ATIS 118.6  
GND CON 121.7  
BAKERSFIELD TOWER\* 118.1 257.8  
BAKERSFIELD DEP CON\* 126.45 270.3 (NORTH)  
126.45 284.625 (SOUTH)

NOTE: Approximate distance from takeoff area to MARIC for Rwy 12L/R and 30L/R.



### TAKEOFF MINIMUMS

Rwy 12L/R, 30L/R:

Standard with minimum climb of 250' per NM to 8000.

NOTE: Chart not to scale.

### DEPARTURE ROUTE DESCRIPTION

TAKEOFF RUNWAYS 12L/R: Turn right heading 240°. Thence. . .

TAKEOFF RUNWAYS 30L/R: Turn left heading 240°. Thence. . .

. . . intercept and proceed on the EHF R-196 to MARIC. Thence via (transition) or (assigned route).

GORMAN TRANSITION (MARIC4.GMN): From over MARIC via AVE R-109 and GMN R-328 to GMN VORTAC.

LAKE HUGHES TRANSITION (MARIC4.LHS): From over MARIC via AVE R-109 and LHS R-305 to LHS VORTAC.

# MARIC FOUR DEPARTURE

(MARIC4.MARIC) 26MAY16

BAKERSFIELD, CALIFORNIA  
MEADOWS FLD (BFL)

SW-3, 02 DEC 2021 to 30 DEC 2021

SW-3, 02 DEC 2021 to 30 DEC 2021

# MEADOWS FOUR DEPARTURE

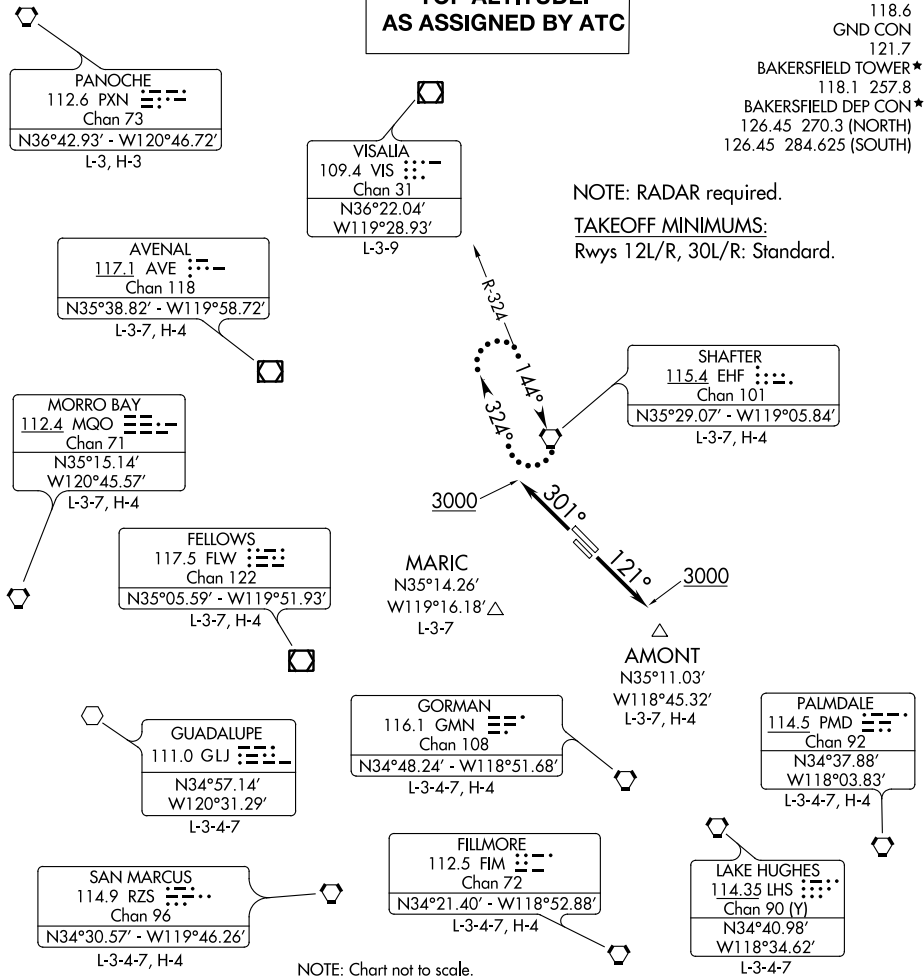
AL-36 (FAA)

MEADOWS FLD (BFL)  
BAKERSFIELD, CALIFORNIA

**TOP ALTITUDE:  
AS ASSIGNED BY ATC**

ATIS  
118.6  
GND CON  
121.7  
BAKERSFIELD TOWER\*  
118.1 257.8  
BAKERSFIELD DEP CON\*  
126.45 270.3 (NORTH)  
126.45 284.625 (SOUTH)

NOTE: RADAR required.  
TAKEOFF MINIMUMS:  
Rwys 12L/R, 30L/R: Standard.



SW-3, 02 DEC 2021 to 30 DEC 2021

SW-3, 02 DEC 2021 to 30 DEC 2021

## DEPARTURE ROUTE DESCRIPTION

**TAKEOFF RUNWAYS 12L/R:** Climb heading 121° to 3000 for vector to assigned route/fix. Thence. . . .

**TAKEOFF RUNWAYS 30L/R:** Climb heading 301° to 3000 for vector to assigned route/fix. Thence. . . .

. . . .Thence, maintain ATC assigned altitude. Expect clearance to requested altitude five minutes after departure.

**LOST COMMUNICATIONS:** If no radio contact for two minutes, proceed direct SHAFTER VORTAC and hold. Climb in holding pattern to expected altitude prior to proceeding on course.

# MEADOWS FOUR DEPARTURE

BAKERSFIELD, CALIFORNIA  
MEADOWS FLD (BFL)

(WRING4.WRING) 21112

# WRING FOUR DEPARTURE

AL-36 (FAA)

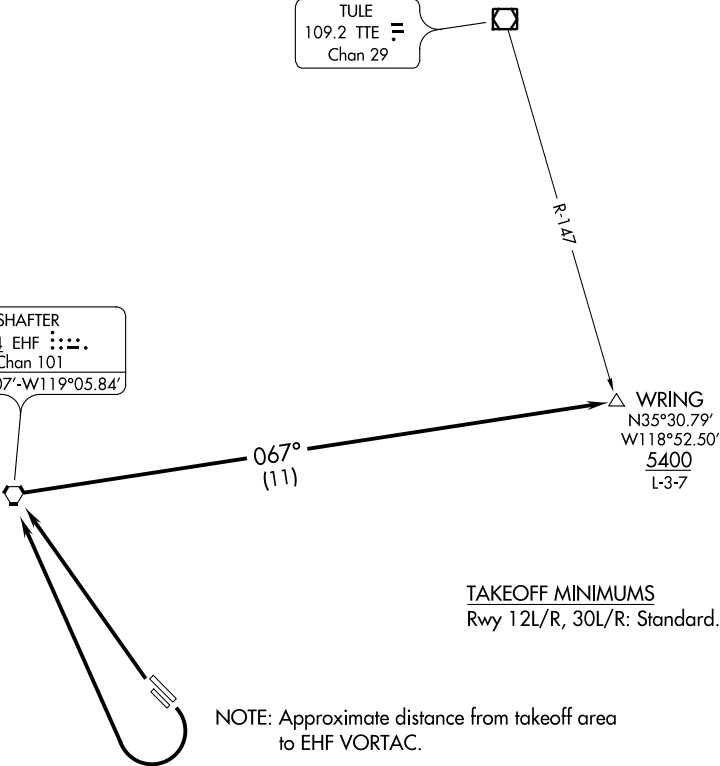
MEADOWS FLD (BFL)  
BAKERSFIELD, CALIFORNIA

ATIS  
118.6  
GND CON  
121.7  
BAKERSFIELD TOWER \*  
118.1 257.8  
BAKERSFIELD DEP CON \*  
126.45 270.3 (NORTH)  
126.45 284.625 (SOUTH)

**TOP ALTITUDE:  
ASSIGNED BY ATC**

TULE  
109.2 TTE ≡  
Chan 29

SHAFTER  
115.4 EHF ⋮⋮⋮  
Chan 101  
N35°29.07'-W119°05.84'



TAKEOFF MINIMUMS  
Rwy 12L/R, 30L/R: Standard.

NOTE: Approximate distance from takeoff area to EHF VORTAC.

NOTE: Chart not to scale.



## DEPARTURE ROUTE DESCRIPTION

TAKEOFF RUNWAYS 12L/R: Climbing right turn direct EHF VORTAC. Thence. . . .

TAKEOFF RUNWAYS 30L/R: Climb direct EHF VORTAC. Thence. . . .

. . . .From over EHF VORTAC via EHF R-067 to cross WRING at or above 5400. Thence via (assigned route).

# WRING FOUR DEPARTURE

(WRING4.WRING) 26MAY16

BAKERSFIELD, CALIFORNIA  
MEADOWS FLD (BFL)

SW-3, 02 DEC 2021 to 30 DEC 2021

SW-3, 02 DEC 2021 to 30 DEC 2021