

WAAS CH 58033 W16A	APP CRS 159°	Rwy Idg TDZE Apt Elev	4007 1368 1368
--	------------------------	-----------------------------	---

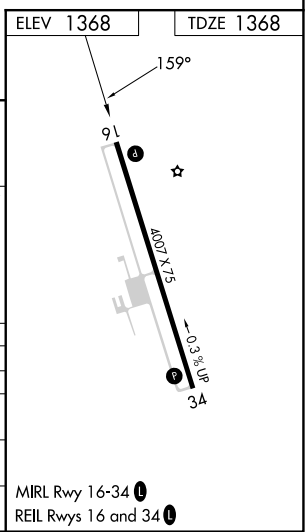
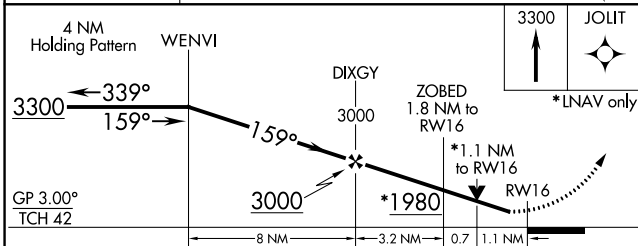
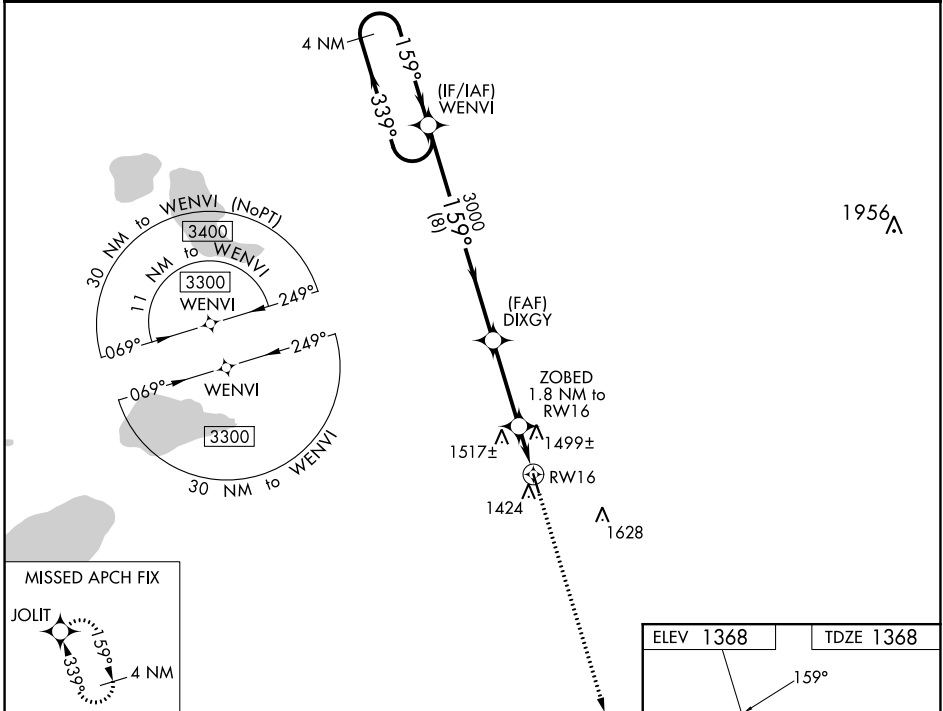
RNAV (GPS) RWY 16

WADENA MUNI (ADC)

⚠ DME/DME RNP-0.3 NA. Helicopter visibility reduction below 1 SM NA. VDP and Baro-VNAV NA with Staples altimeter setting. When local altimeter setting not received, use Staples altimeter setting and increase all DA 52 feet and all MDA 60 feet, increase LNAV/VNAV visibility 1/8 mile, LNAV Cat C visibility 1/4 mile and Circling Cat C visibility 1/4 mile. For uncompensated Baro-VNAV systems, LNAV/VNAV NA below -17°C (1°F) or above 54°C (130°F).

MISSED APPROACH:
Climb to 3300 direct JOLIT and hold.

AWOS-3PT 118.875	MINNEAPOLIS CENTER 126.1 269.2	GCO 121.725	UNICOM 122.8 (CTAF) 0
----------------------------	--	-----------------------	---------------------------------



CATEGORY	A	B	C	D
LPV DA	1631-1	263 (300-1)		NA
LNAV/VNAV DA	1767-1 1/8	399 (400-1 1/8)		NA
LNAV MDA	1760-1	392 (400-1)	1760-1 1/8 392 (400-1 1/8)	NA
C CIRCLING	1780-1 412 (500-1)	1820-1 452 (500-1)	1940-1 1/2 572 (600-1 1/2)	NA

NC-1, 22 FEB 2024 to 21 MAR 2024

NC-1, 22 FEB 2024 to 21 MAR 2024

WAAS CH 70633 W34A	APP CRS 339°	Rwy ldg TDZE Apt Elev	4007 1364 1368
--	------------------------	-----------------------------	---

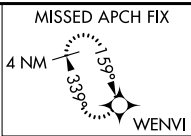
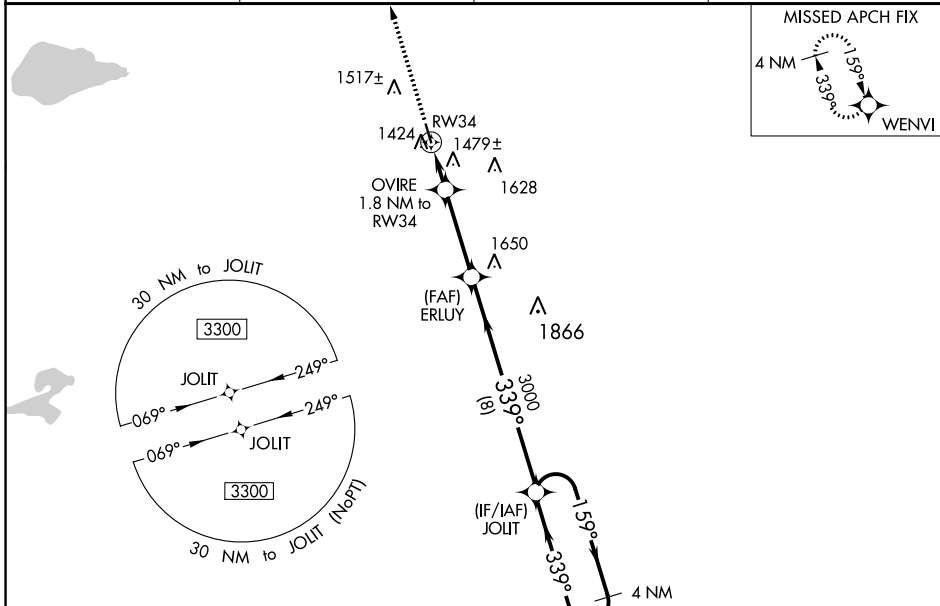
RNAV (GPS) RWY 34

WADENA MUNI (ADC)

⚠ DME/DME RNP-0.3 NA. VDP and Baro-VNAV NA with Staples altimeter setting. When local altimeter setting not received, use Staples altimeter setting and increase all DA 52 feet and all MDA 60 feet, increase LNAV/VNAV visibility 1/8 mile, LNAV Cat C visibility 1/4 mile and Circling Cat C visibility 1/4 mile. For uncompensated Baro-VNAV systems, LNAV/VNAV NA below -17°C (1°F) or above 54°C (130°F).

MISSED APPROACH: Climb to 3300 direct WENVI and hold.

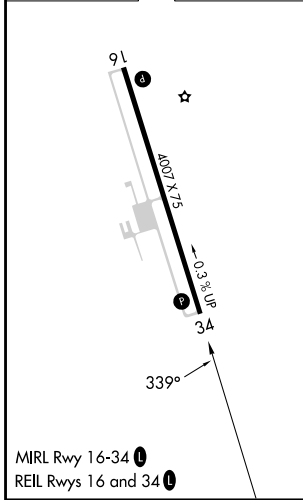
AWOS-3PT 118.875	MINNEAPOLIS CENTER 126.1 269.2	GCO 121.725	UNICOM 122.8 (CTAF) 0
----------------------------	--	-----------------------	---------------------------------



NC-1, 22 FEB 2024 to 21 MAR 2024

NC-1, 22 FEB 2024 to 21 MAR 2024

ELEV 1368	TDZE 1364
-----------	-----------



WADENA, MINNESOTA
Amdt 1A 02APR15

46°27'N-95°13'W

WADENA MUNI (ADC)

RNAV (GPS) RWY 34

3300	WENVI	4 NM Holding Pattern		
* LNAV only	OVIRE 1.8 NM to RW34	ERLUY 3000		
	*1.1 NM to RW34	JOLIT 3300		
	1960*	159° → 3300		
	3000	← 339°		
	1.1 NM 0.7 NM 3.2 NM 8 NM	GP 3.00° TCH 42		
CATEGORY	A	B	C	D
LPV DA	1614-1 250 (300-1)			NA
LNAV/VNAV DA	1791-1½ 427 (500-1½)			NA
LNAV MDA	1740-1	376 (400-1)	1740-1½ 376 (400-1½)	NA
C CIRCLING	1780-1 412 (500-1)	1820-1 452 (500-1)	1940-1½ 572 (600-1½)	NA