

|  |                        |   |             |
|--|------------------------|---|-------------|
| WAAS<br>CH <b>63134</b><br><b>W21A</b> | APP CRS<br><b>215°</b> | Rwy Idg<br>TDZE <b>941</b><br>Apt Elev <b>943</b> | <b>3398</b> |
|--|------------------------|---|-------------|

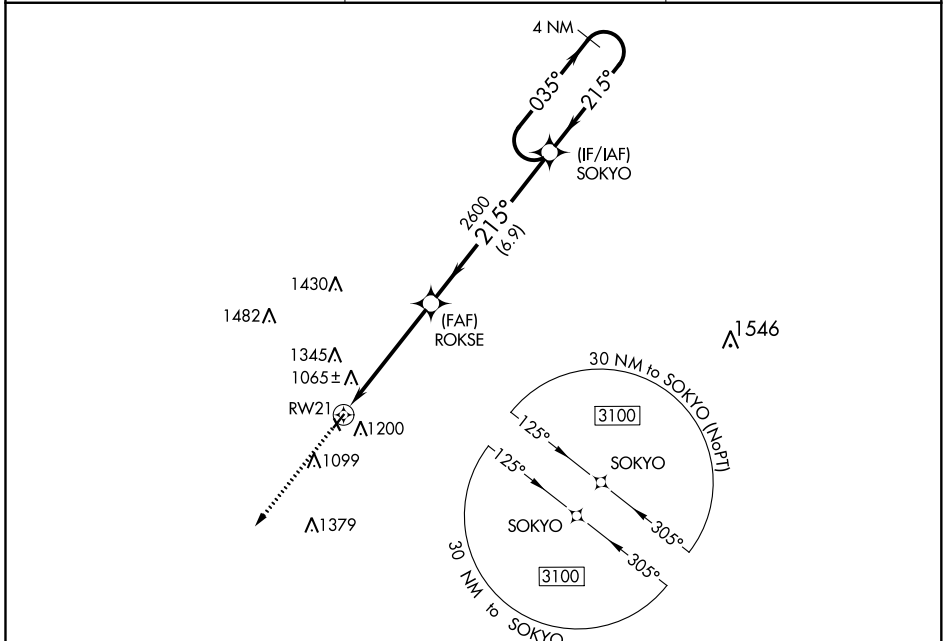
# RNAV (GPS) RWY 21

MIAMI COUNTY (K81)

**NA** Baro-VNAV NA. DME/DME RNP-0.3 NA. Use New Century Aircenter altimeter setting; when not received, use Johnson County Exec altimeter setting and increase all DA 8 feet and all MDA 20 feet; increase LPV and LNAV/VNAV all Cats visibility 1/8 mile. Helicopter visibility reduction below 3/4 SM NA.

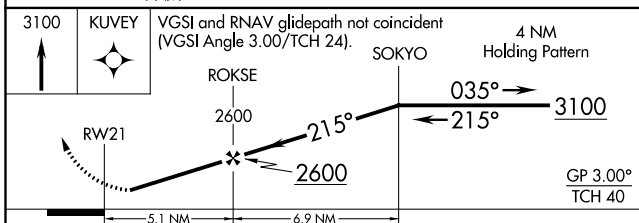
MISSED APPROACH: Climb to 3100 direct KUYEY and hold.

|                            |   |                                 |
|----------------------------|---|---------------------------------|
| IXD ASOS<br><b>135.325</b> | KANSAS CITY APP CON<br><b>118.9 251.075</b> | UNICOM<br><b>122.8 (CTAF) 0</b> |
|----------------------------|---|---------------------------------|

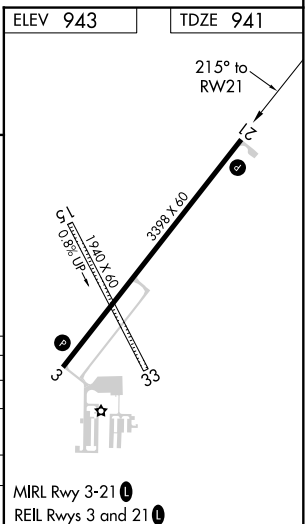


NC-2, 04 NOV 2021 to 02 DEC 2021

NC-2, 04 NOV 2021 to 02 DEC 2021



| CATEGORY          | A          | B               | C | D  |
|-------------------|------------|-----------------|---|----|
| LPV DA            | 1252-1     | 311 (400-1)     |   | NA |
| LNAV/VNAV DA      | 1429-1 1/8 | 488 (500-1 1/8) |   | NA |
| LNAV MDA          | 1520-1     | 579 (600-1)     |   | NA |
| <b>C</b> CIRCLING | 1580-1     | 637 (700-1)     |   | NA |



PAOLA, KANSAS

AL-10067 (FAA)

21112

|  |                        |   |
|--|------------------------|---|
| WAAS<br>CH <b>49134</b><br><b>W03A</b> | APP CRS<br><b>035°</b> | Rwy Idg <b>3398</b><br>TDZE <b>941</b><br>Apt Elev <b>943</b> |
|--|------------------------|---|

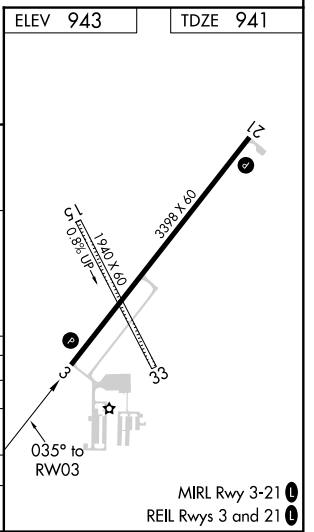
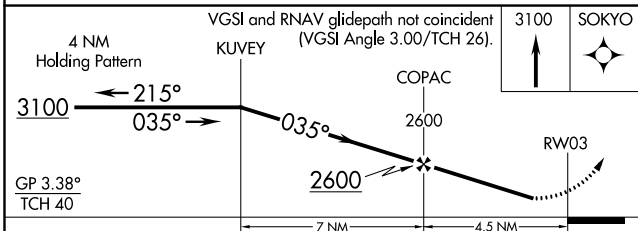
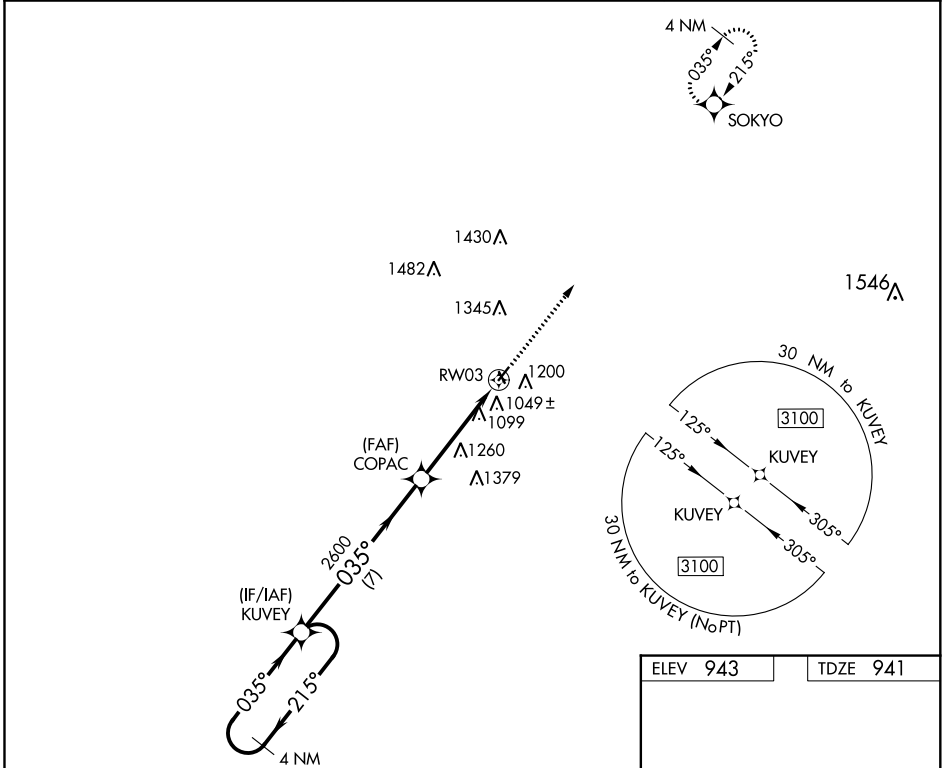
# RNAV (GPS) RWY 3

MIAMI COUNTY (K81)

**⚠ NA** Baro-VNAV NA. DME/DME RNP-0.3 NA. Use New Century Aircenter altimeter setting; when not received, use Johnson County Exec altimeter setting and increase all DA 8 feet and all MDA 20 feet. Helicopter visibility reduction below 3/4 SM NA.

**MISSED APPROACH:** Climb to 3100 direct SOKYO and hold.

|                            |   |                                 |
|----------------------------|---|---------------------------------|
| IXD ASOS<br><b>135.325</b> | KANSAS CITY APP CON<br><b>118.9 251.075</b> | UNICOM<br><b>122.8 (CTAF) 0</b> |
|----------------------------|---|---------------------------------|



| CATEGORY          | A      | B           | C | D  |
|-------------------|--------|-------------|---|----|
| LPV DA            | 1284-1 | 343 (400-1) |   | NA |
| LNNAV/VNAV DA     | 1274-1 | 333 (400-1) |   | NA |
| LNNAV MDA         | 1640-1 | 699 (700-1) |   | NA |
| <b>C</b> CIRCLING | 1640-1 | 697 (700-1) |   | NA |

PAOLA, KANSAS  
Amdt 1A 16OCT14

38°32'N-94°55'W

# RNAV (GPS) RWY 3

MIAMI COUNTY (K81)

MIRL Rwy 3-21 **0**  
REIL Rwy 3 and 21 **0**

NC-2, 04 NOV 2021 to 02 DEC 2021

NC-2, 04 NOV 2021 to 02 DEC 2021